

SANITARY SEWERAGE IMPROVEMENTS

FOR

HARRIMAN , TENNESSEE

DECEMBER 1988

CDBG PROJECT NO. Z - 38353

JOB NO. 88-05

White Taylor Walker / GM

Brentwood

Engineers • Surveyors • Landscape Architects • Planners

Huntsville

INDEX OF DRAWINGS

89-0019

SHEET	DESCRIPTION
1.	KEY MAP
2.	LINE "A" STA. 0+00 TO STA. 15+50 E.O.L.
3.	FM.I STA. 0+00 TO STA. 5+05 E.O.L. LINE "A-1" STA. 10+00 TO STA. 6+00 E.O.L. LINE "B" STA. 0+00 TO STA. 3+05 E.O.L.
4.	LINE "C" STA. 0+32 TO STA. 14+00
5.	LINE "C" STA. 14+00 TO STA. 17+00 E.O.L. LINE "D" STA. 0+00 TO STA. 15+00
6.	LINE "D" STA. 0+00 TO STA. 15+00
7.	LINE "E" STA. 0+00 TO STA. 16+00 E.O.L.
8.	LINE "E" STA. 0+00 TO STA. 16+00 E.O.L.
9.	PUMP STATION SITE PLAN AND DETAILS
10.	PUMP STATION DETAILS
11.	STANDARD SEWER DETAILS
12.	STANDARD MANHOLE DETAILS



SET NO. _____

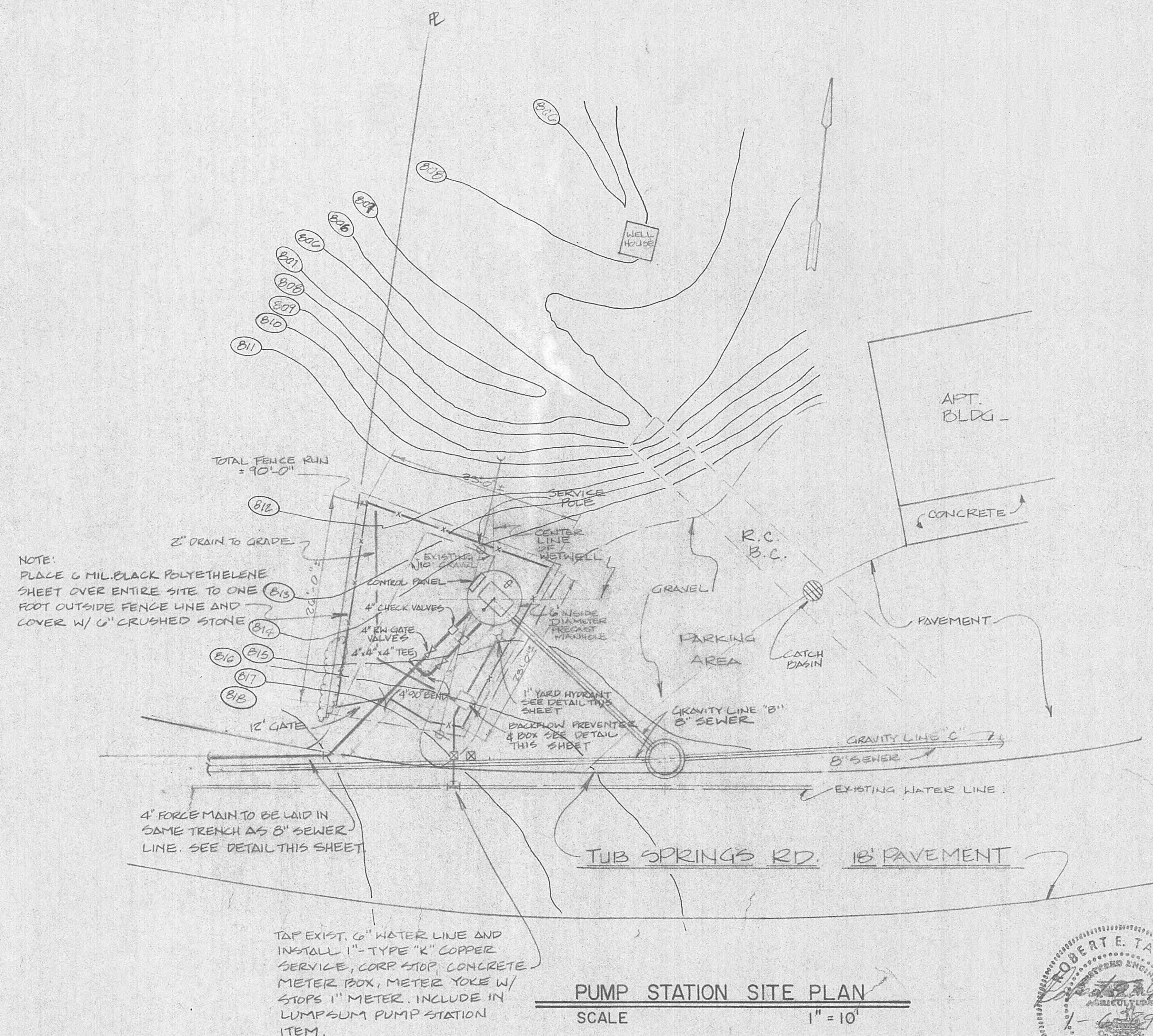
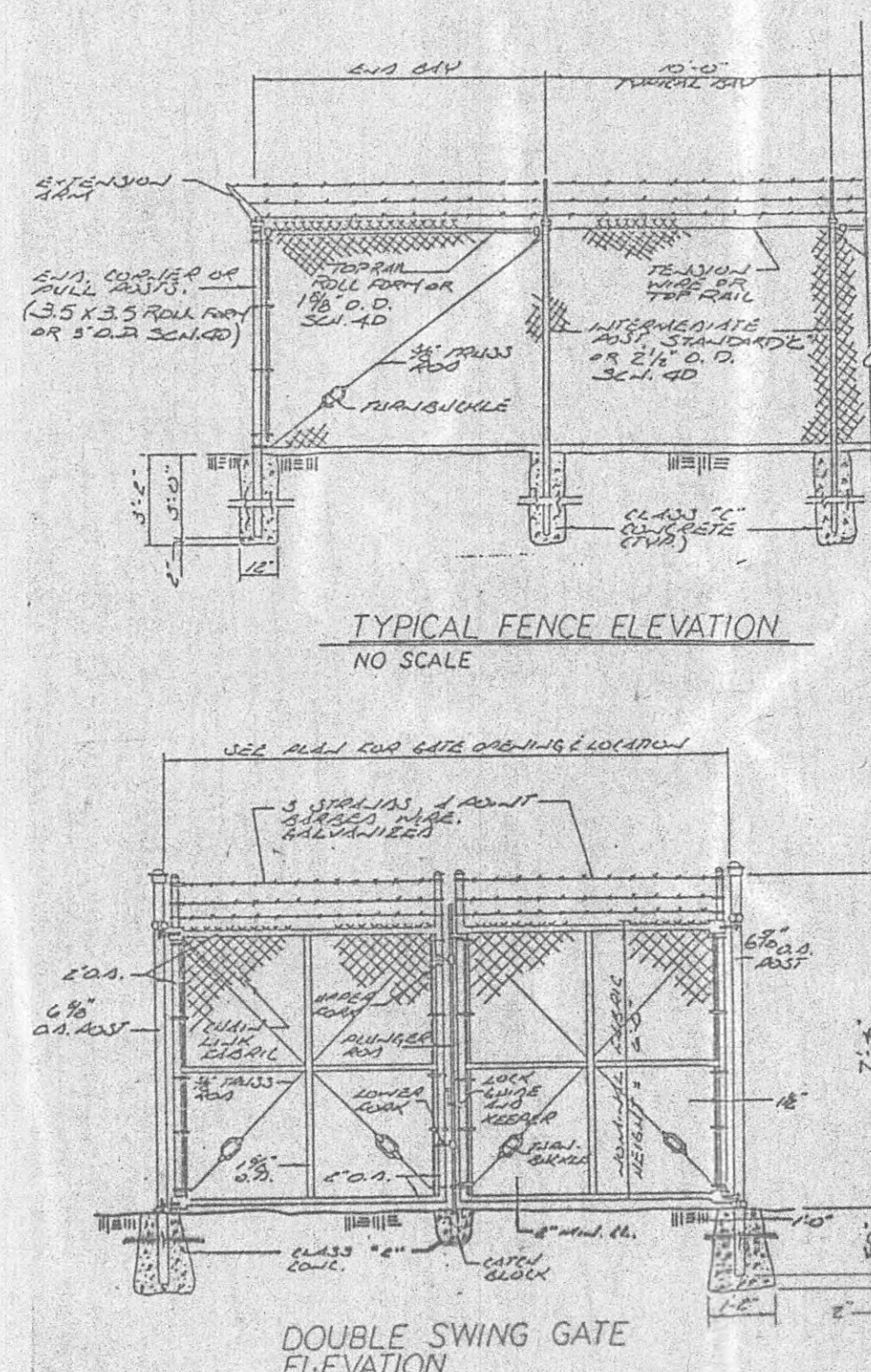
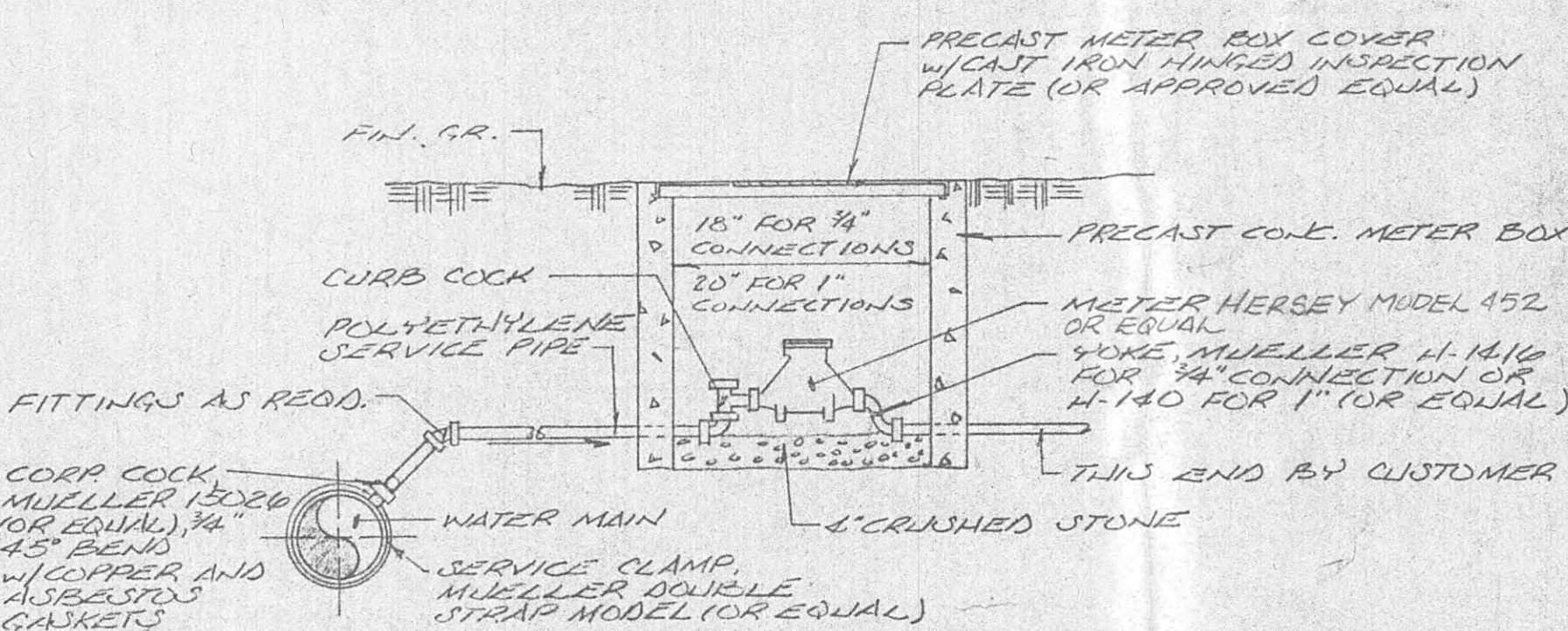
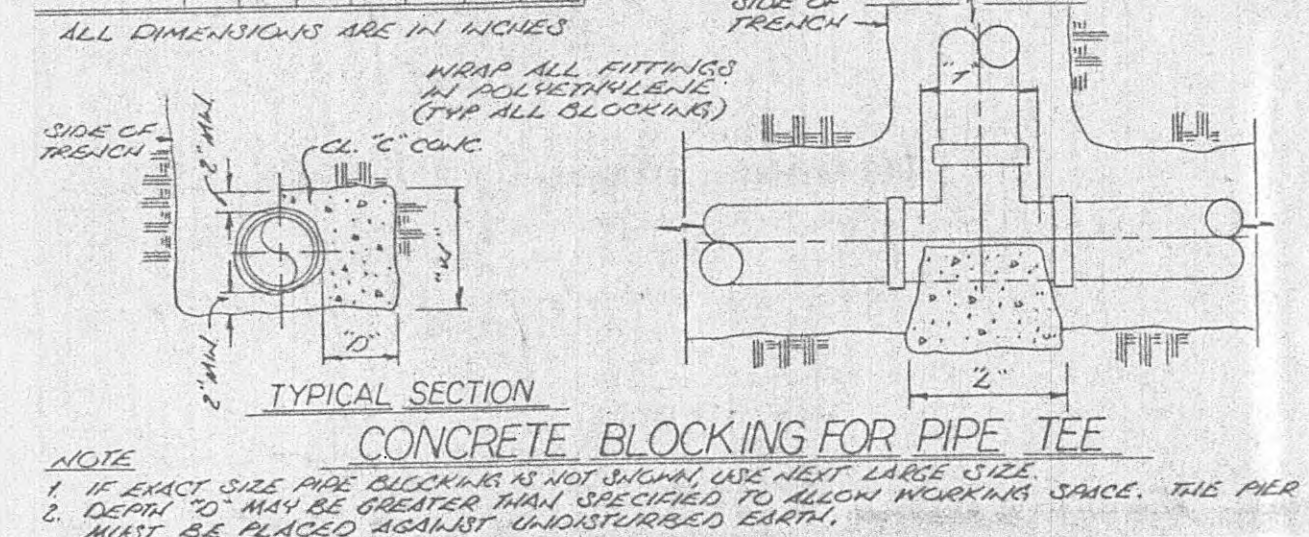
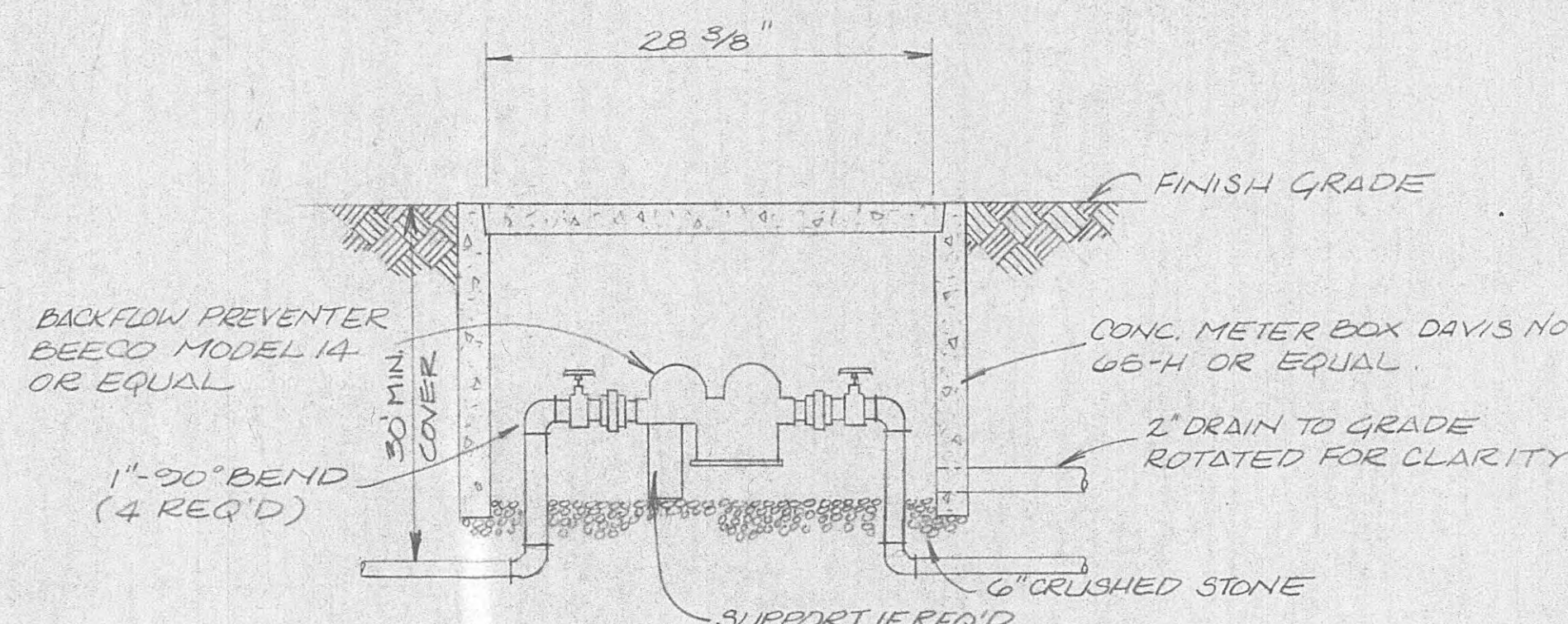
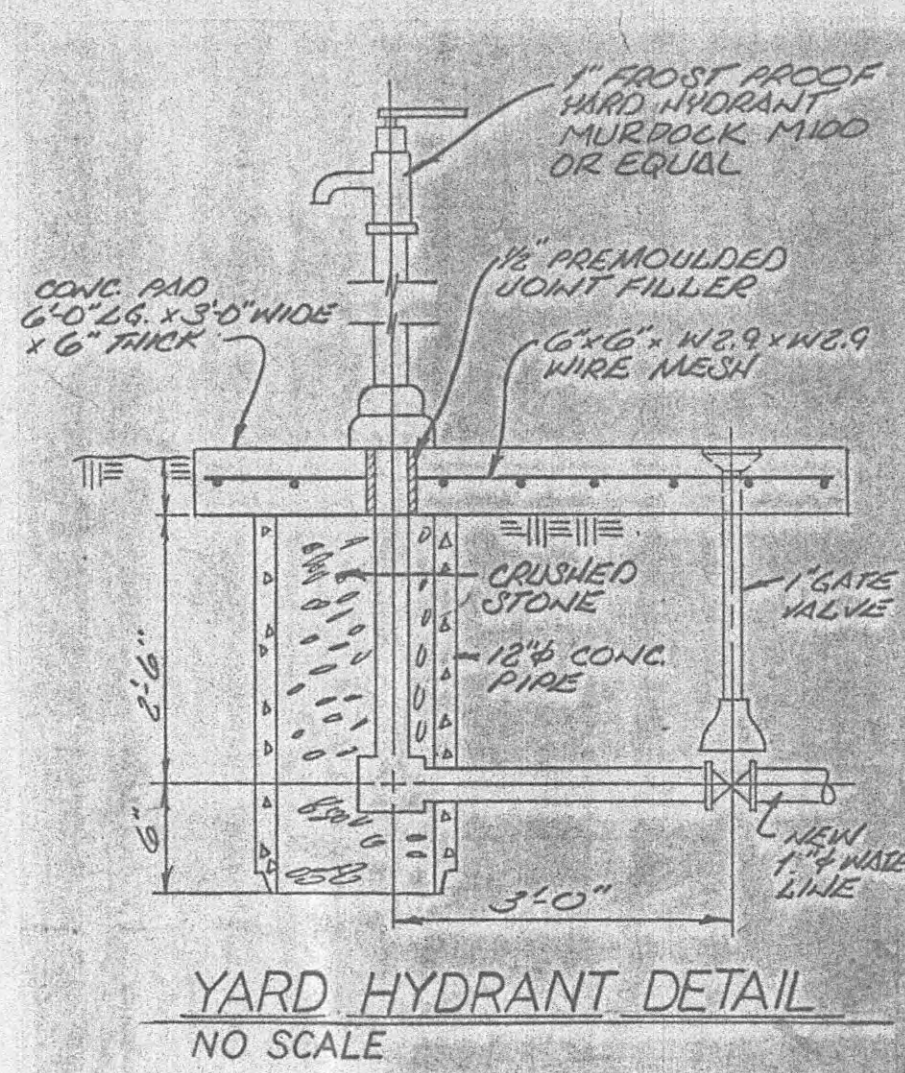
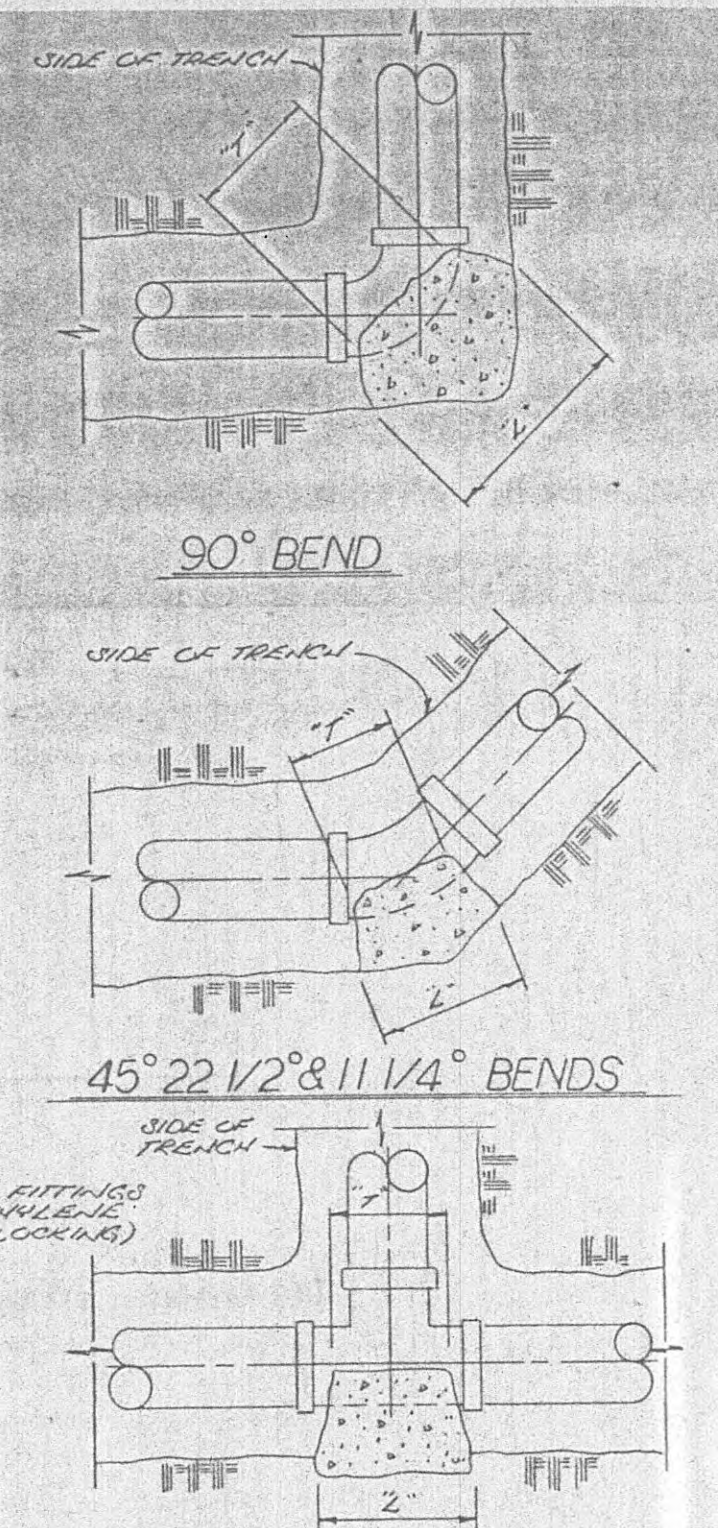
Tub Spacing, Pipe Ring, Boreded

90° BEND									
SIZE	3"	4"	6"	8"	10"	12"			
D	5"	6"	8"	10"	12"	14"			
L	12"	14"	16"	18"	20"	22"			
W	12"	14"	16"	18"	20"	22"			
T	12"	14"	16"	18"	20"	22"			

45° BEND									
SIZE	3"	4"	6"	8"	10"	12"			
D	5"	6"	8"	10"	12"	14"			
L	12"	14"	16"	18"	20"	22"			
W	12"	14"	16"	18"	20"	22"			
T	12"	14"	16"	18"	20"	22"			

90° BEND									
SIZE	3"	4"	6"	8"	10"	12"			
D	5"	6"	8"	10"	12"	14"			
L	12"	14"	16"	18"	20"	22"			
W	12"	14"	16"	18"	20"	22"			
T	12"	14"	16"	18"	20"	22"			

45° BEND									
SIZE	3"	4"	6"	8"	10"	12"			
D	5"	6"	8"	10"	12"	14"			
L	12"	14"	16"	18"	20"	22"			
W	12"	14"	16"	18"	20"	22"			
T	12"	14"	16"	18"	20"	22"			

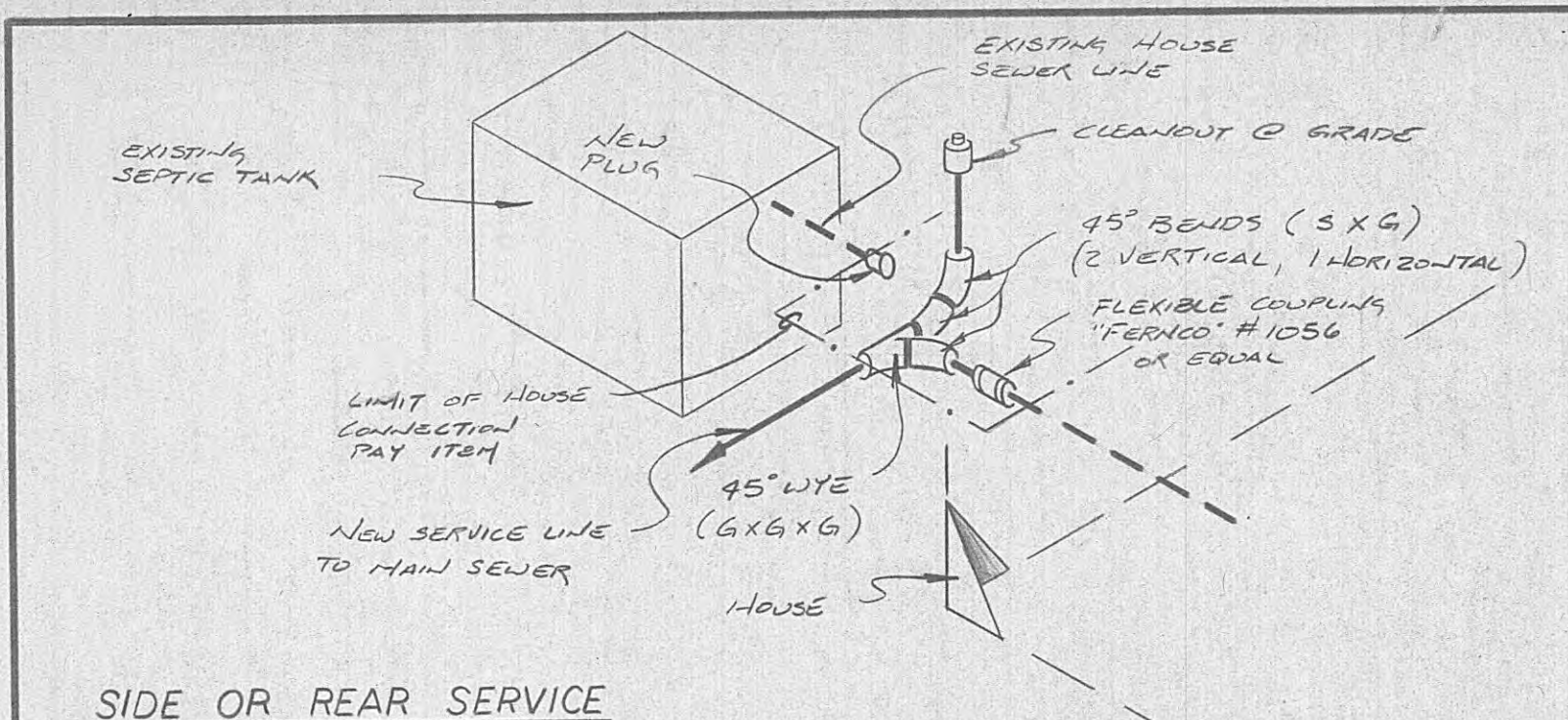


APPROVAL EXPIRES
FEB 9 1990
TENN DEPT OF HEALTH & ENVIRONMENT
Division of Construction Grants & Loans

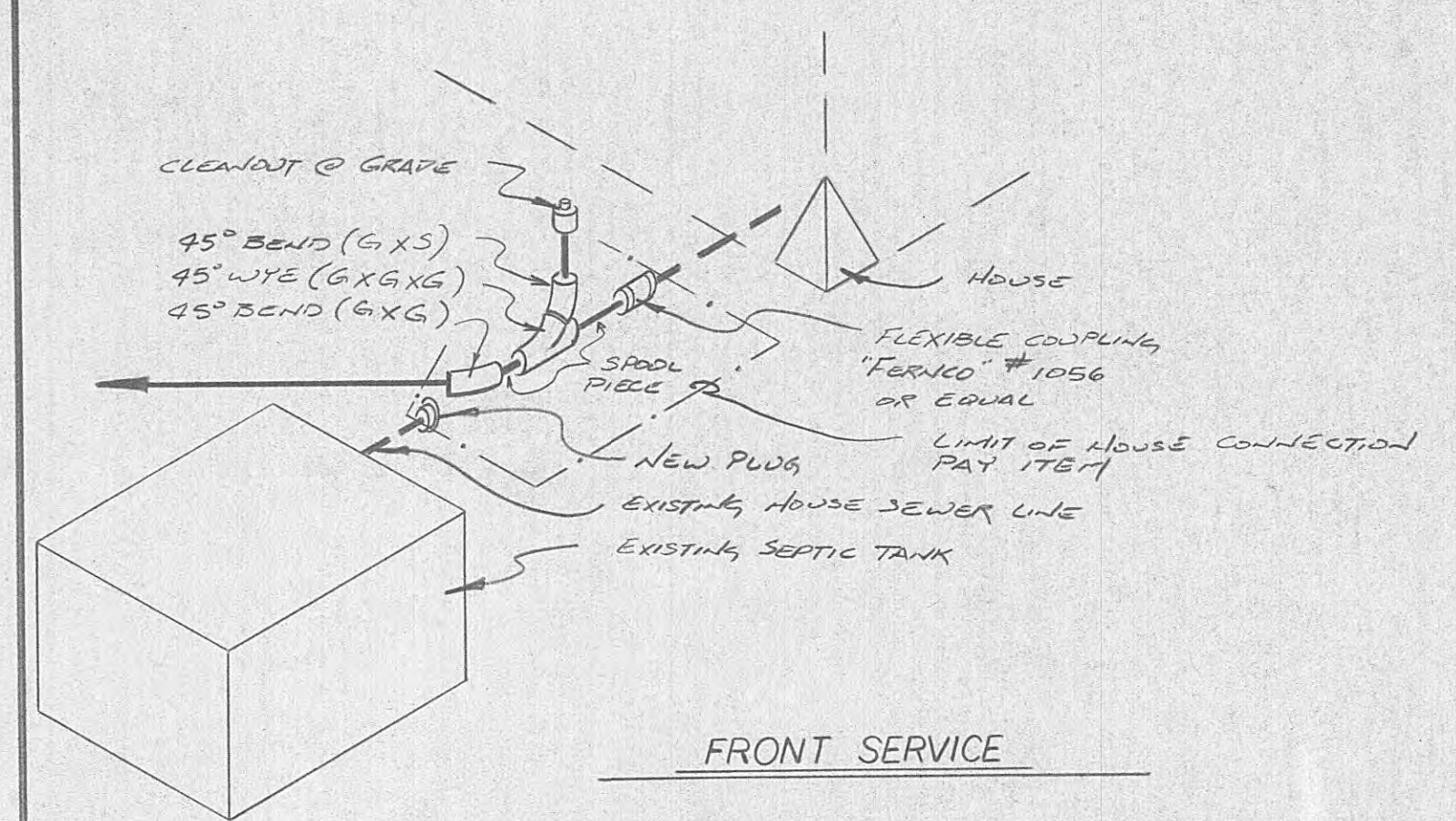
APPROVED FOR CONSTRUCTION
The documents bearing this stamp have been received and reviewed by the
TENN. DEPT. OF HEALTH & ENVIRONMENT
DIVISION OF CONSTRUCTION GRANTS & LOANS
and is hereby approved for construction by the commissioner
FEB 9 1989
APPROVED
This approval shall not be construed as creating a presumption of correct construction or as warranting by the commissioner that the approved facilities will reach the intended goals.
For the Commissioner
BY

WHITE - TAYLOR - WALKER, INC.
NASHVILLE, TENNESSEE

REVISION	DATE	DESCRIPTION	BY	DESIGNED	SCALE	SANITARY SEWERAGE IMPROVEMENTS	PUMP STATION SITE PLAN AND DETAILS	SHEET
				R E T	AS SHOWN			10
				DRAWN	DATE			OF
				P F	DEC 88			12
				CHECKED	JOB NO.		HARRIMAN, TENNESSEE	
				R E T	88-05			

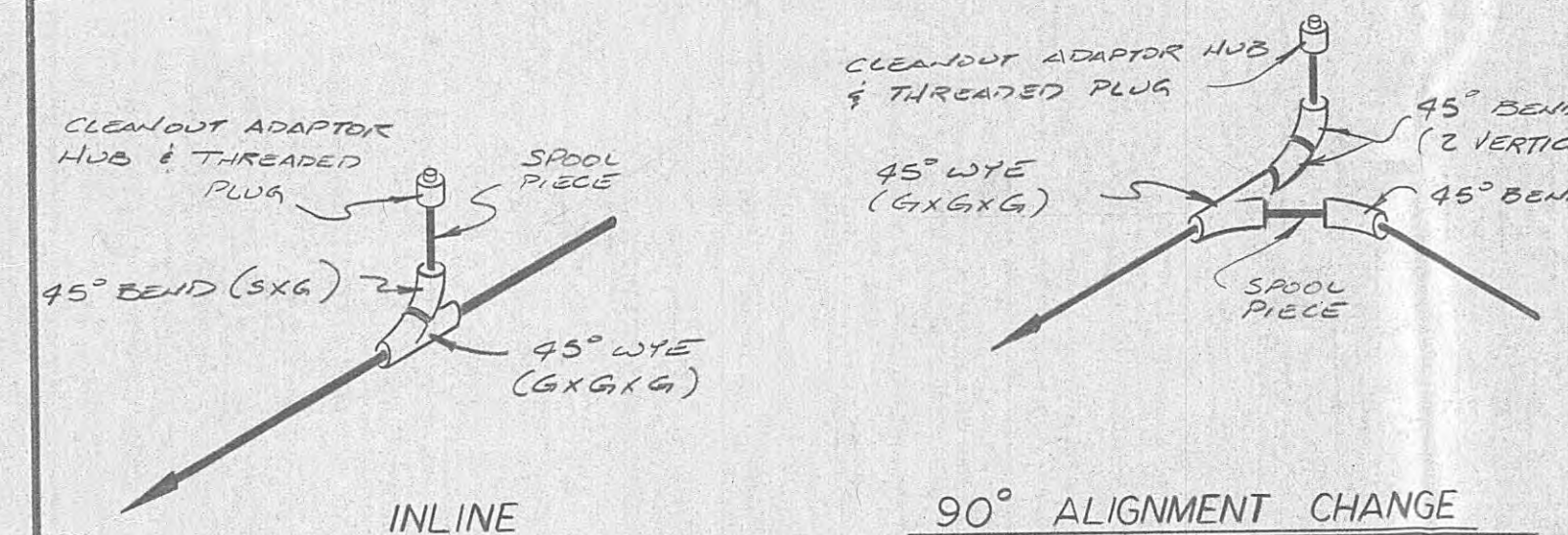


SIDE OR REAR SERVICE

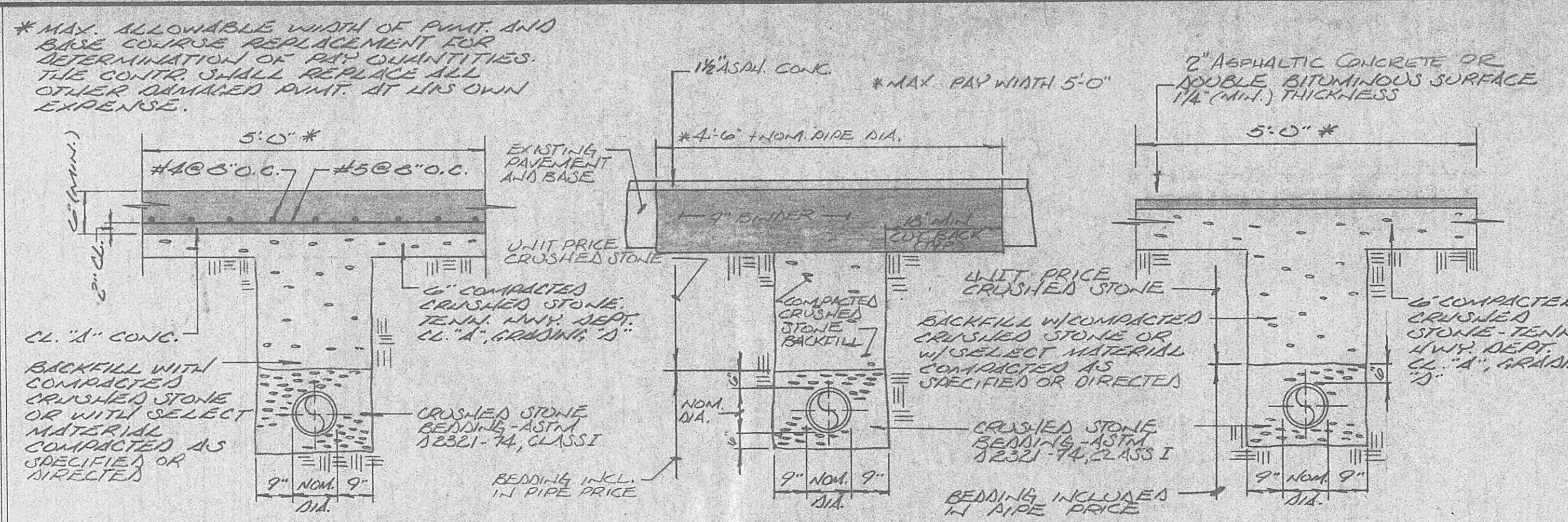


FRONT SERVICE

TYPICAL HOUSE CONNECTION DETAILS



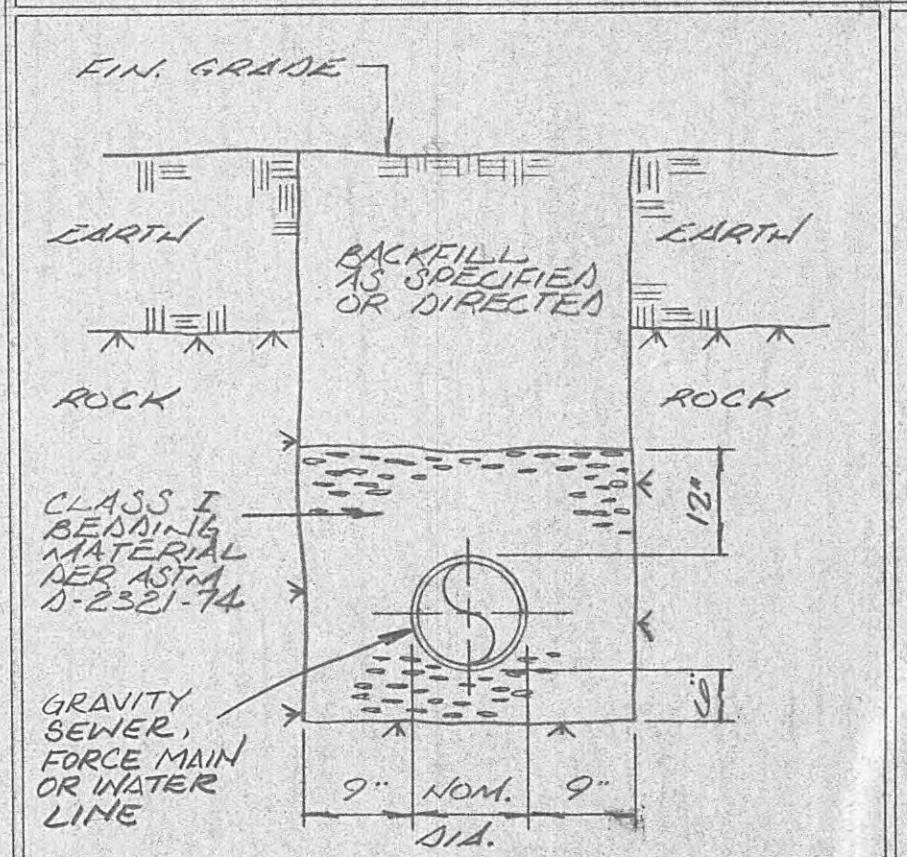
TYPICAL CLEANOUT DETAILS



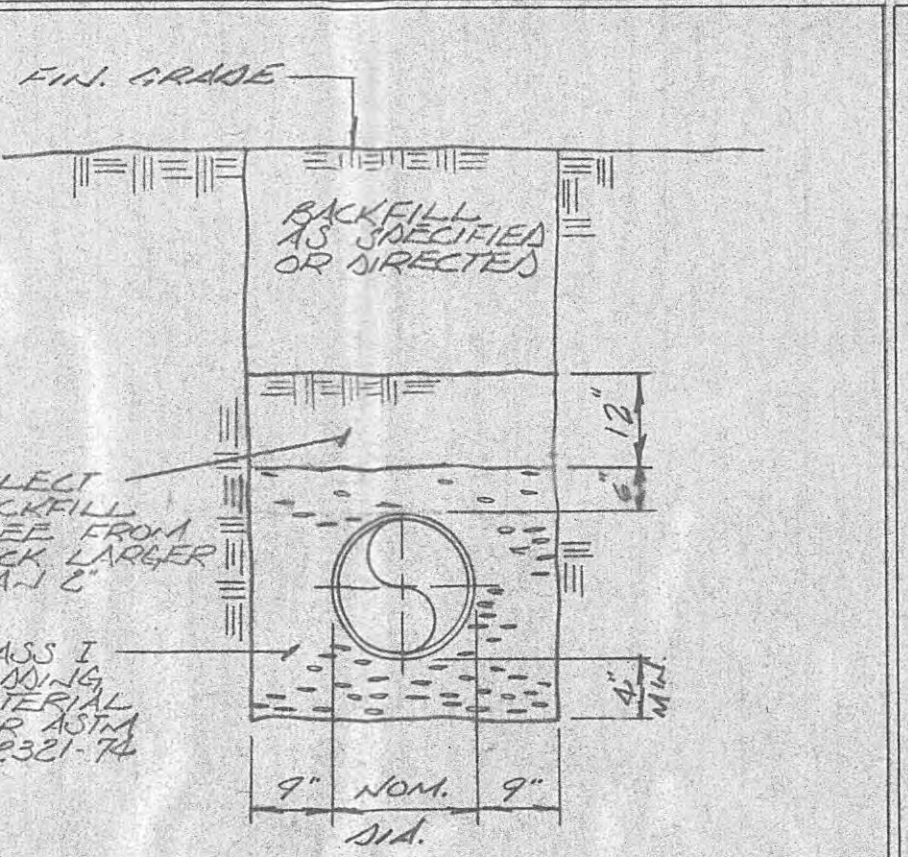
CONCRETE PAVEMENT REPLACEMENT

OPEN-CUT PAVEMENT REPLACEMENT WITHIN STATE HIGHWAY RIGHT-OF-WAY

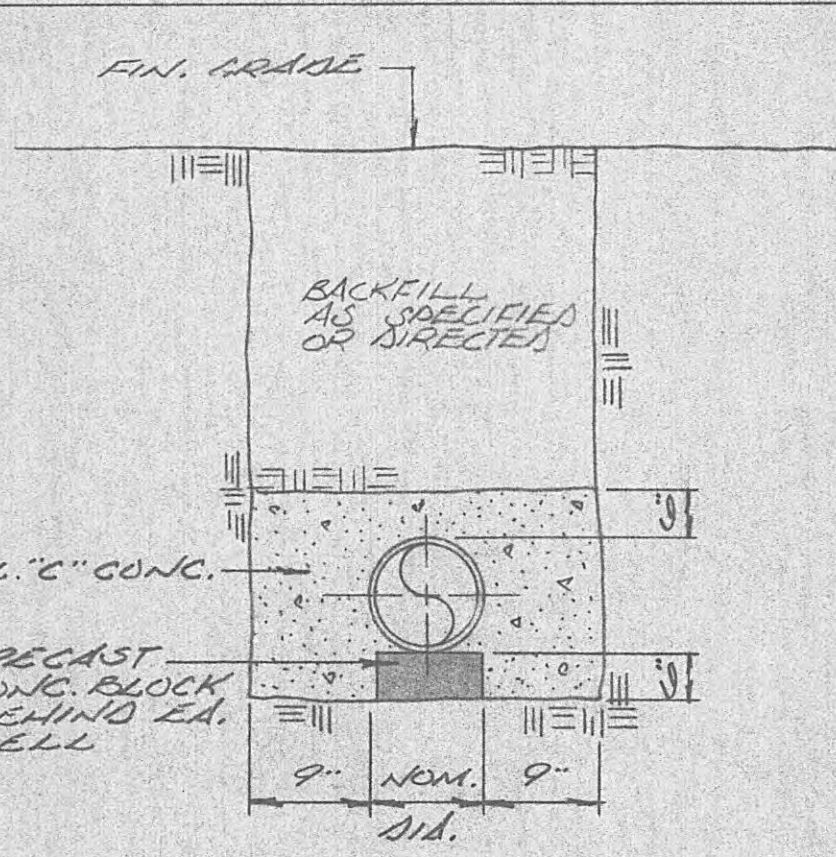
BITUMINOUS PAVEMENT REPLACEMENT



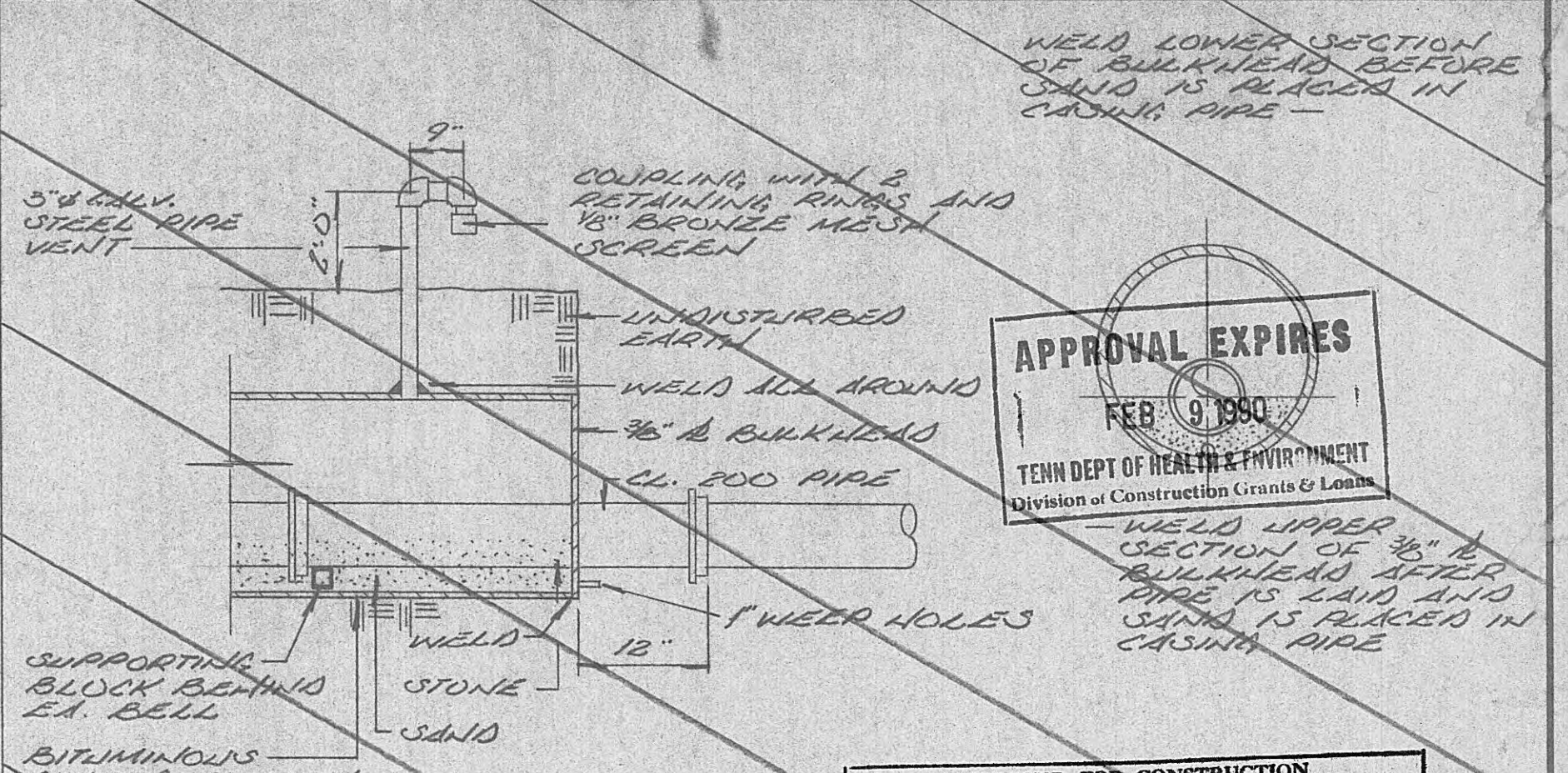
STANDARD PIPE BEDDING IN ROCK TRENCH



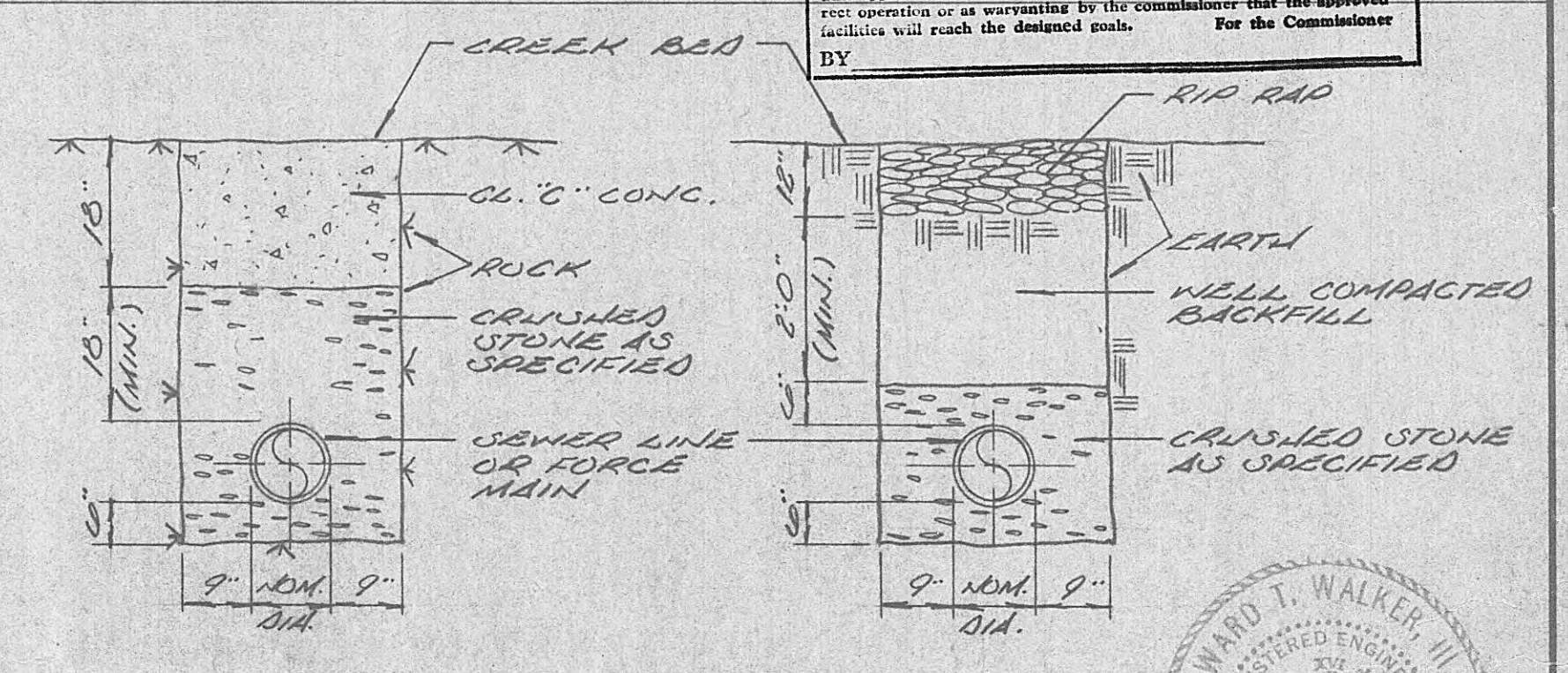
STANDARD PIPE BEDDING (P.V.C. SEWERS)



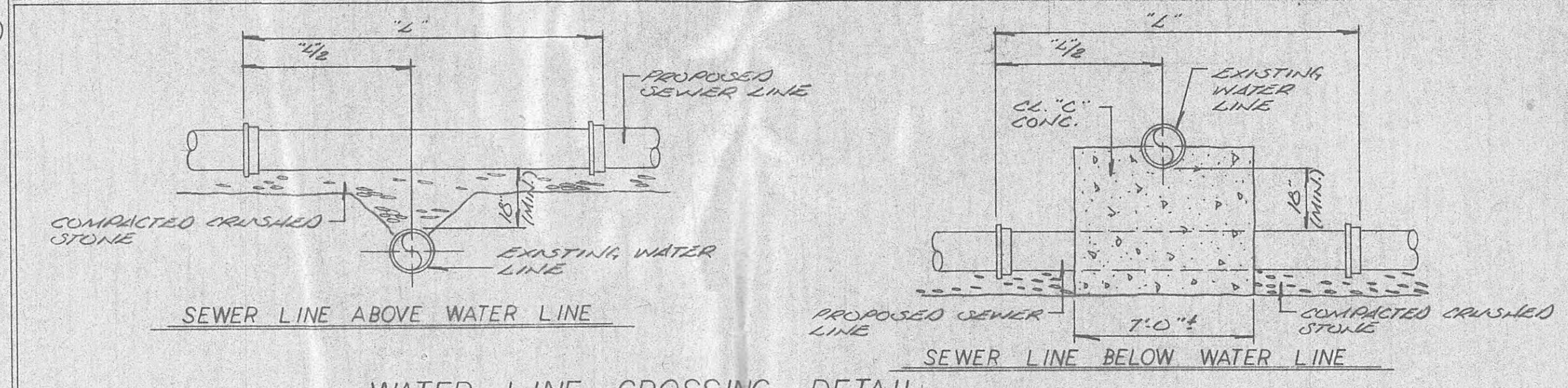
STANDARD CONCRETE ENCASUREMENT



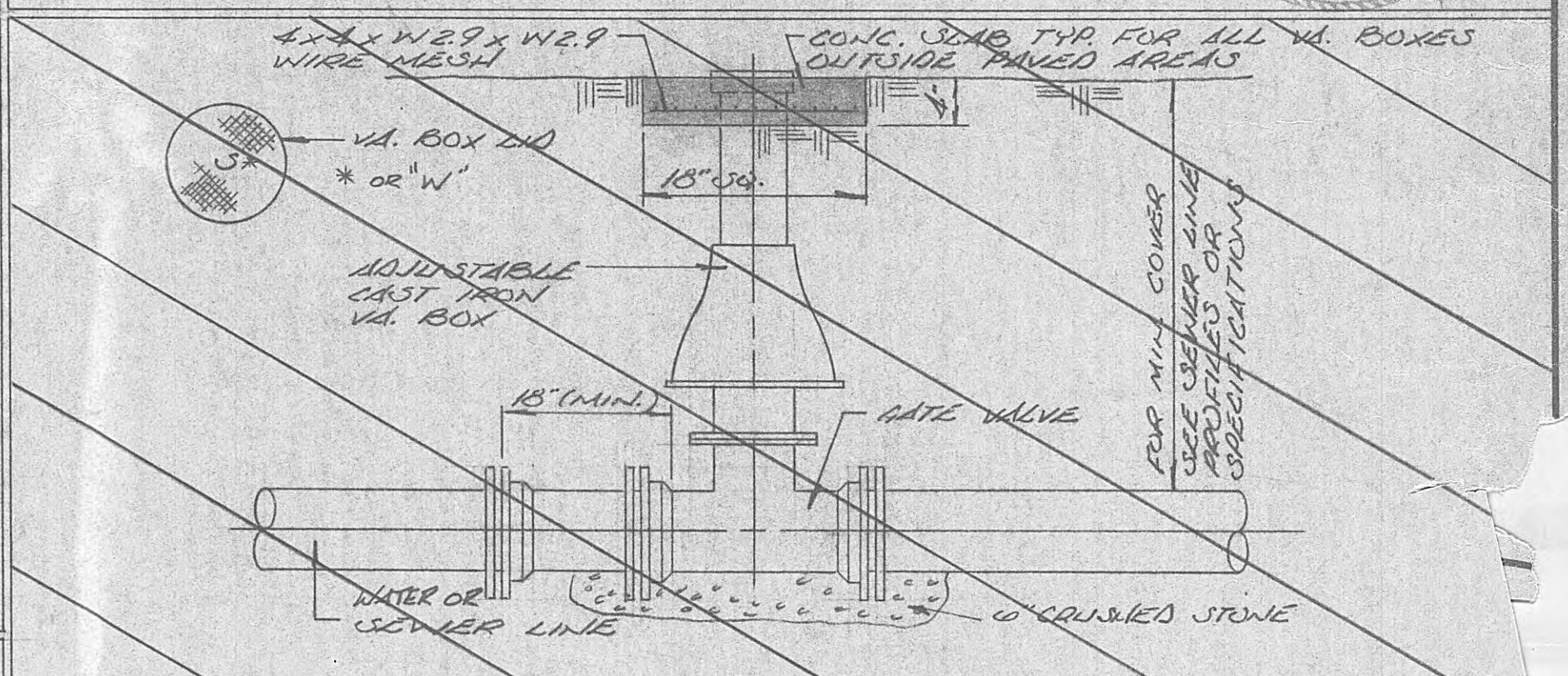
SEWER AND FORCE MAIN CASING



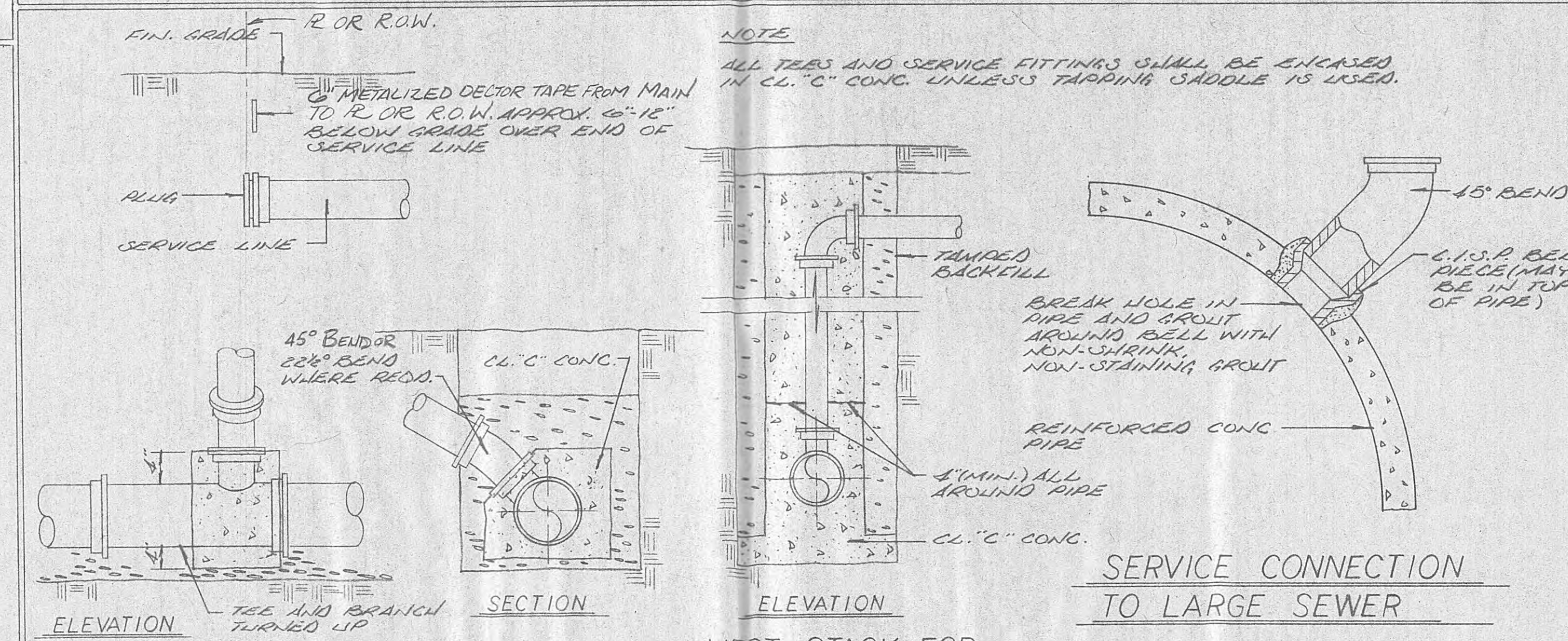
TYPICAL STREAM CROSSING



WATER LINE CROSSING DETAIL



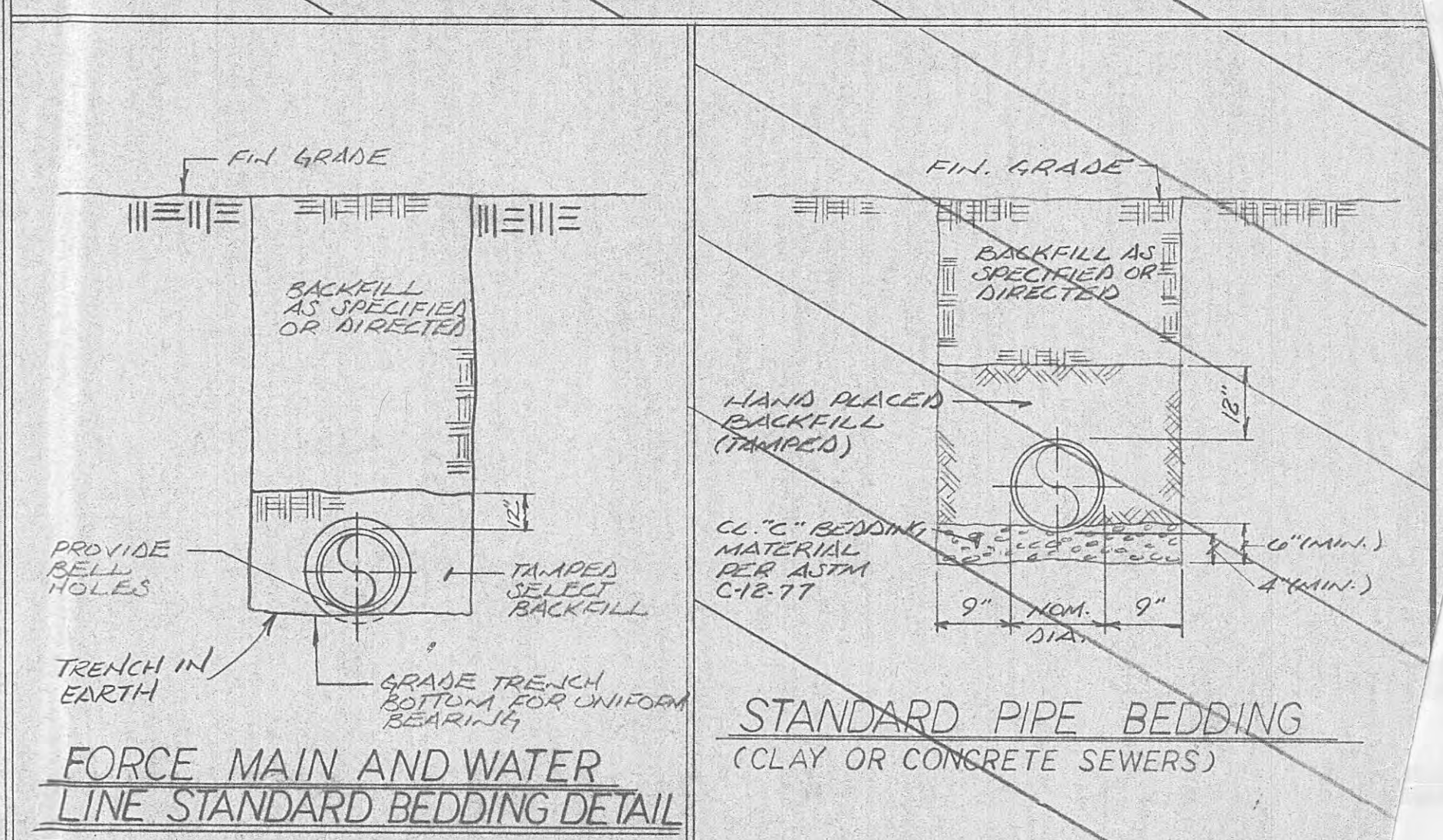
TYPICAL GATE VALVE SETTING



SERVICE CONNECTION TO LARGE SEWER

HOUSE CONNECTION DETAIL

VERT. STACK FOR HOUSE CONNECTION



FORCE MAIN AND WATER LINE STANDARD BEDDING DETAIL

STANDARD PIPE BEDDING (CLAY OR CONCRETE SEWERS)

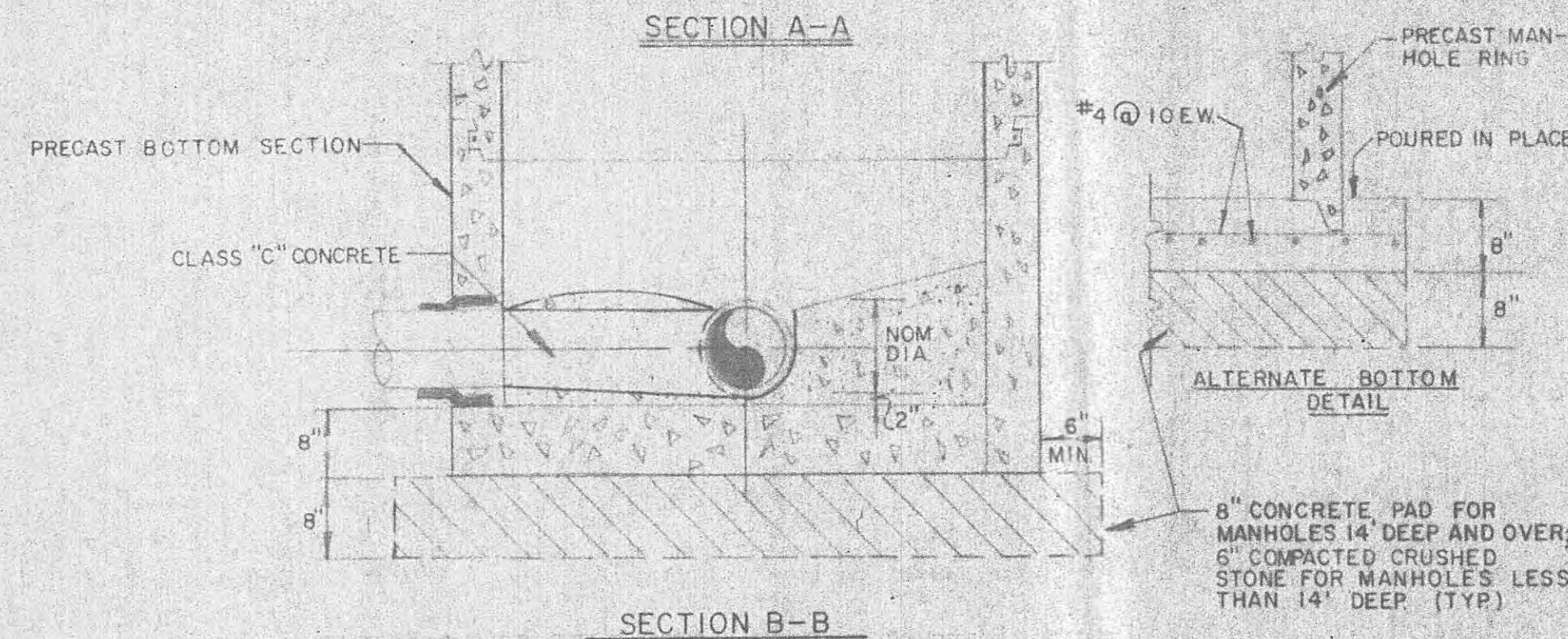
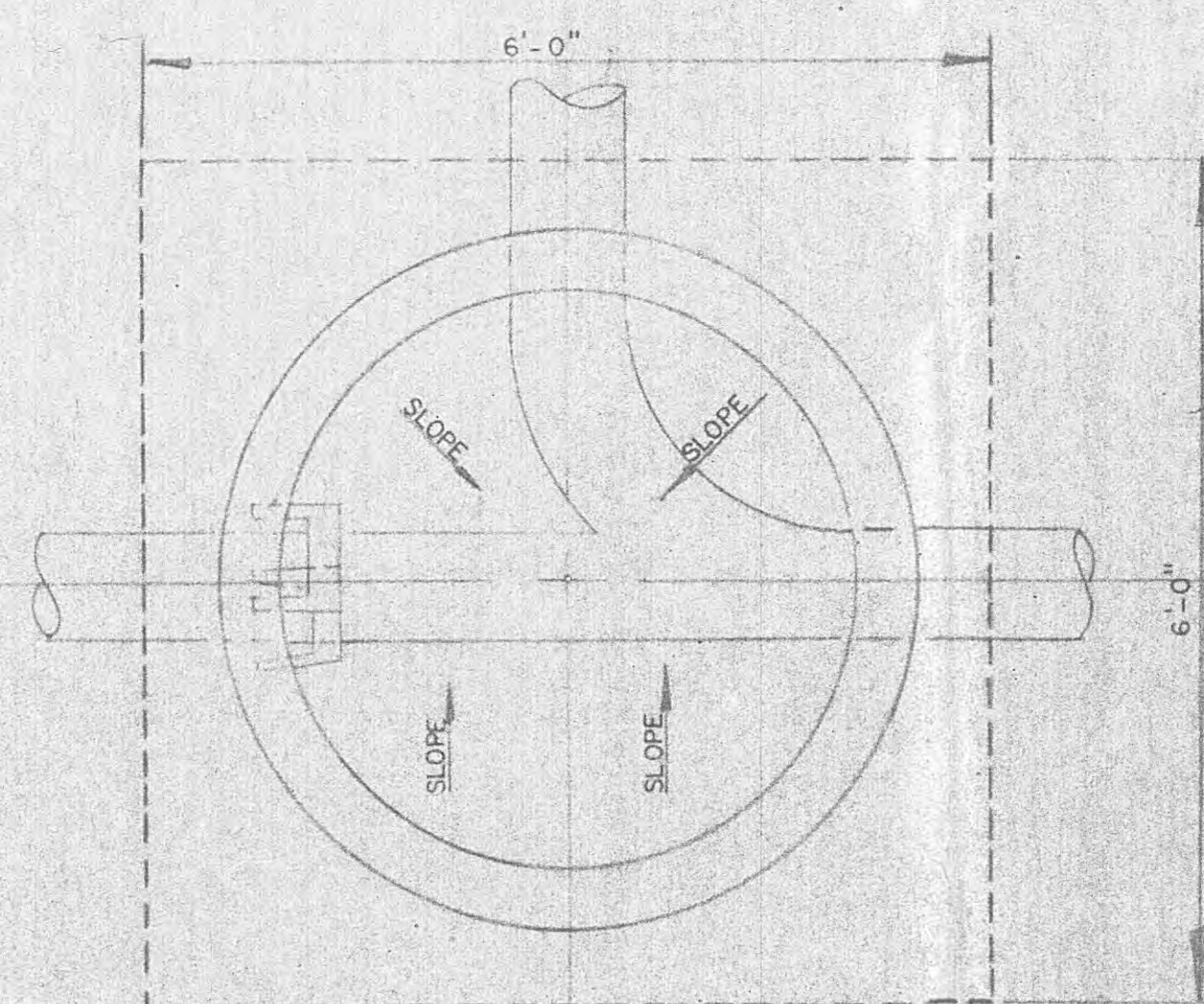
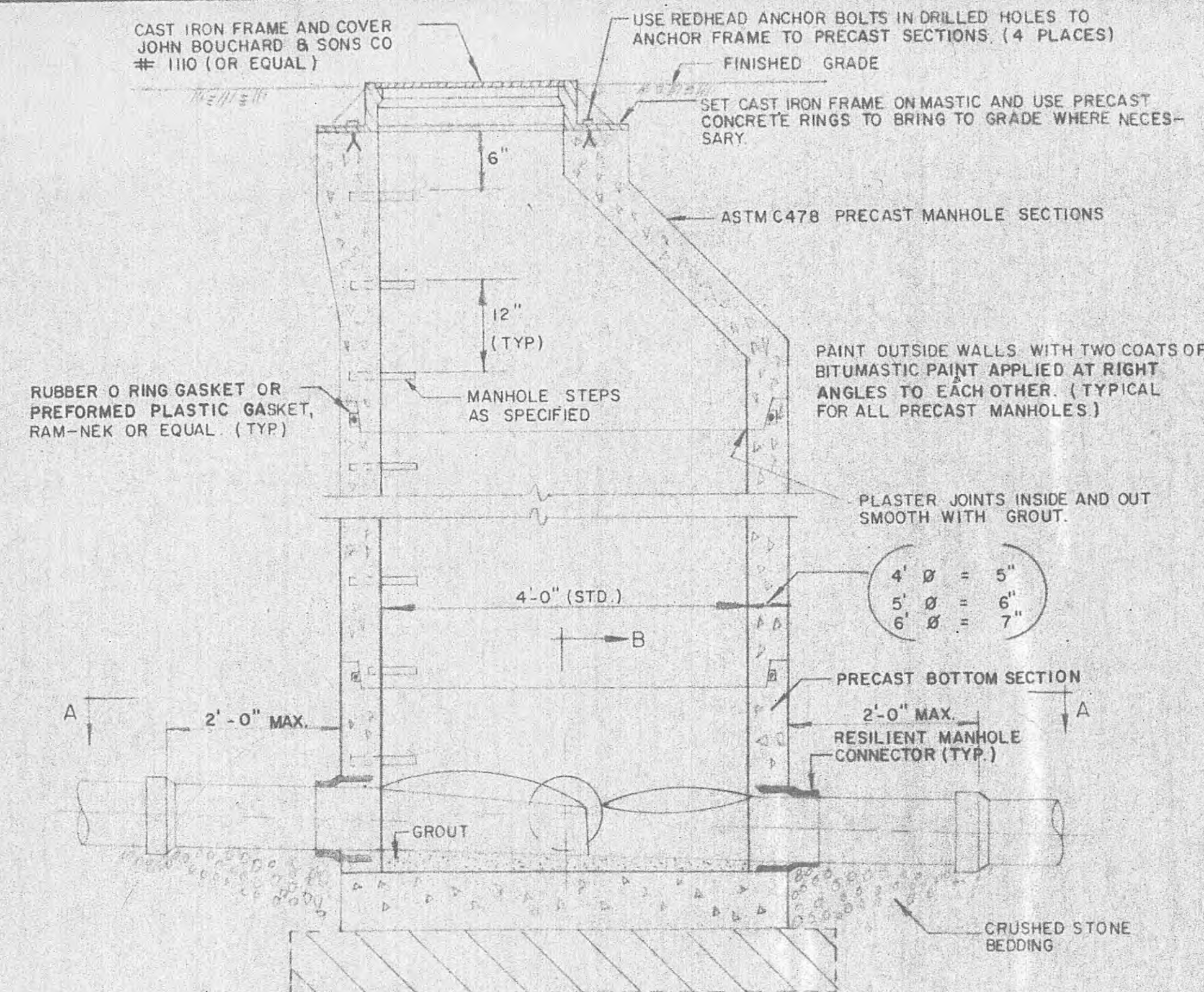
WHITE - TAYLOR - WALKER, INC.
BRENTWOOD, TENNESSEE

REVISION	DATE	DESCRIPTION	BY	DESIGNED	SCALE
				RET	NONE
				DRAWN	DATE
				TFG	DEC. 88
				CHECKED	JOB NO.
				RET	88-05

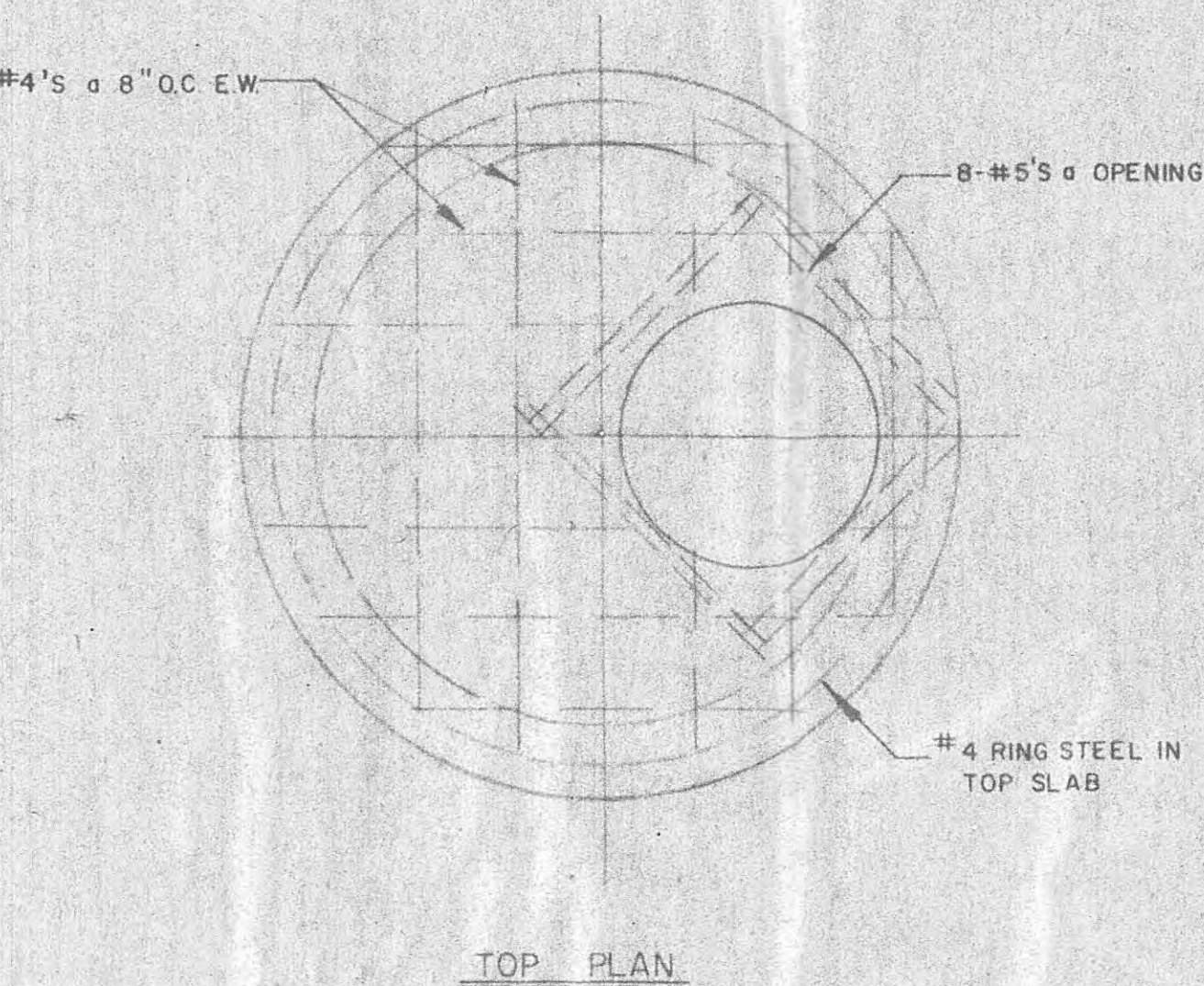
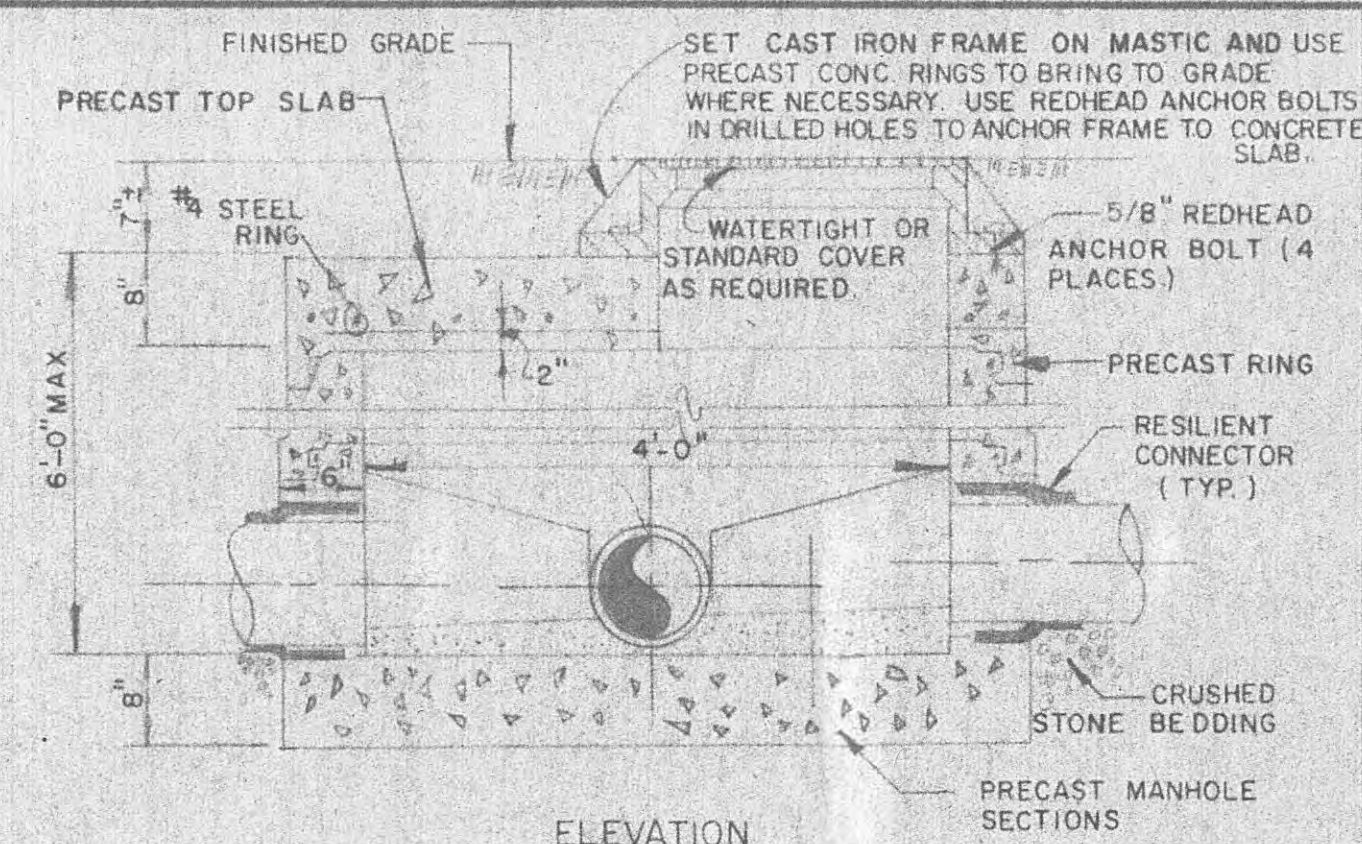
SANITARY SEWERAGE
IMPROVEMENTS

STANDARD SEWER DETAILS
HARRIMAN, TENNESSEE

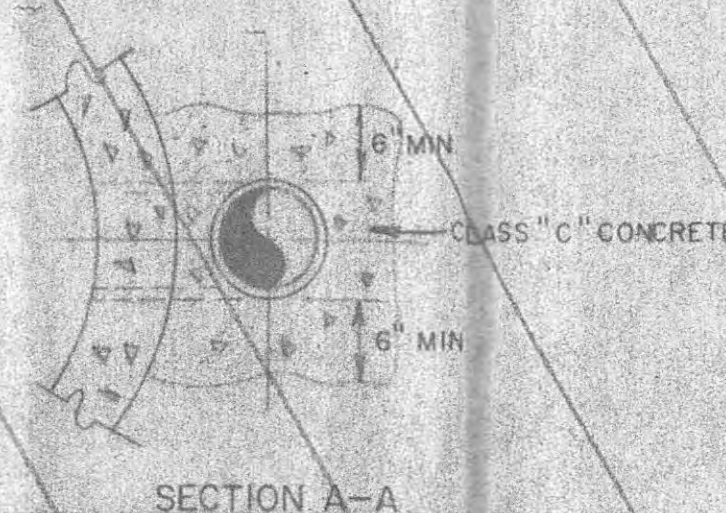
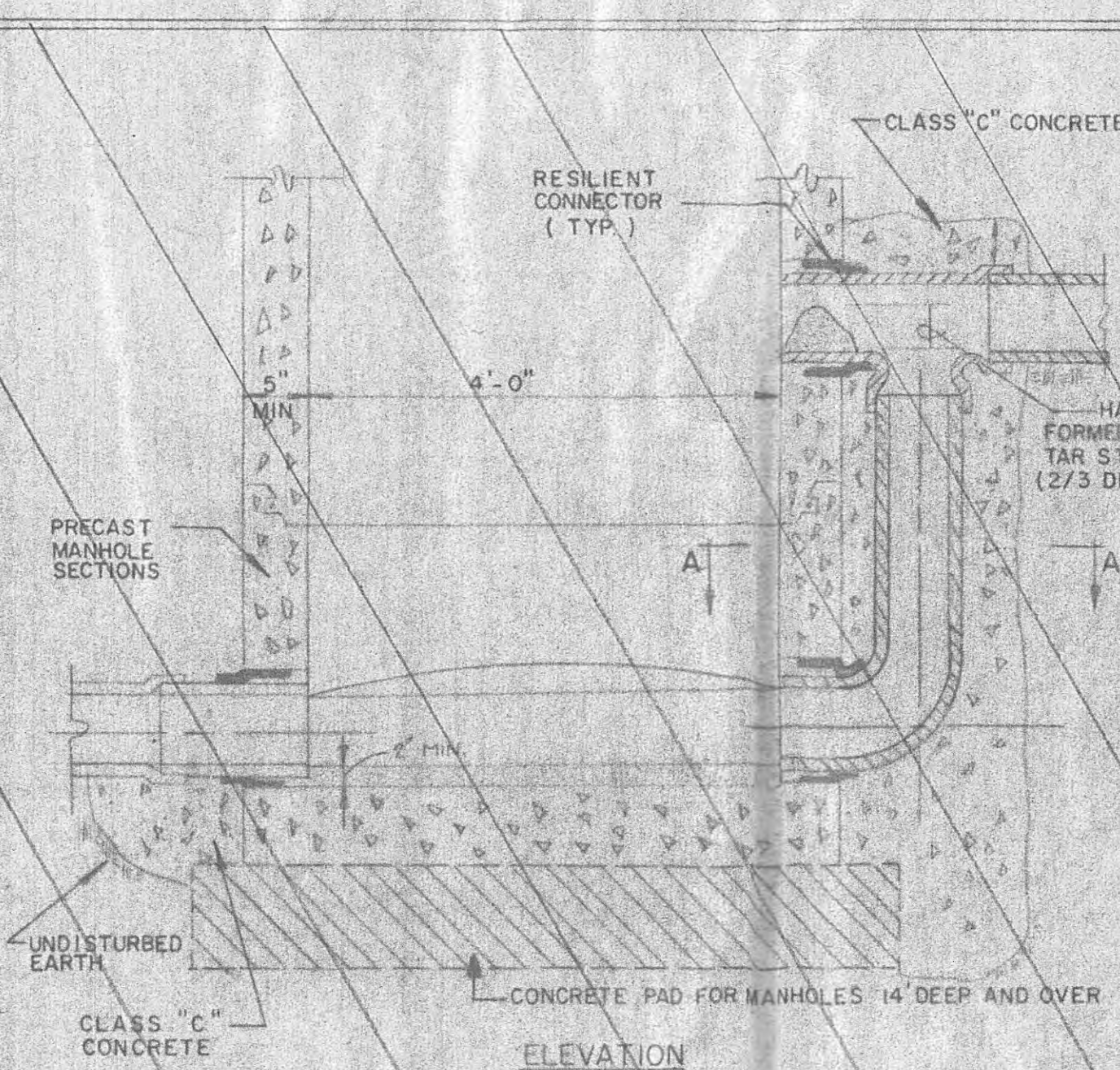
SHEET
11
OF
17



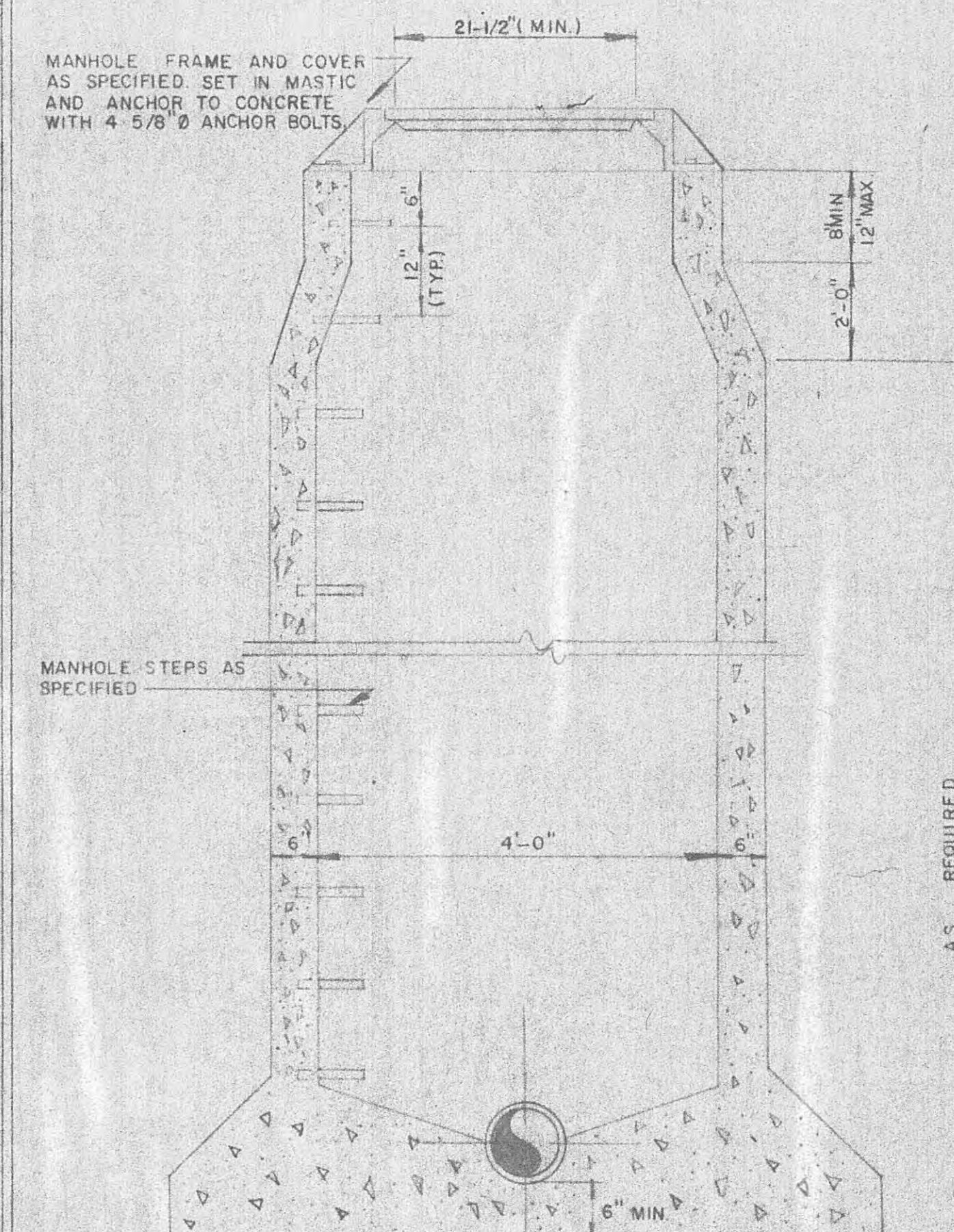
STANDARD PRECAST MANHOLE



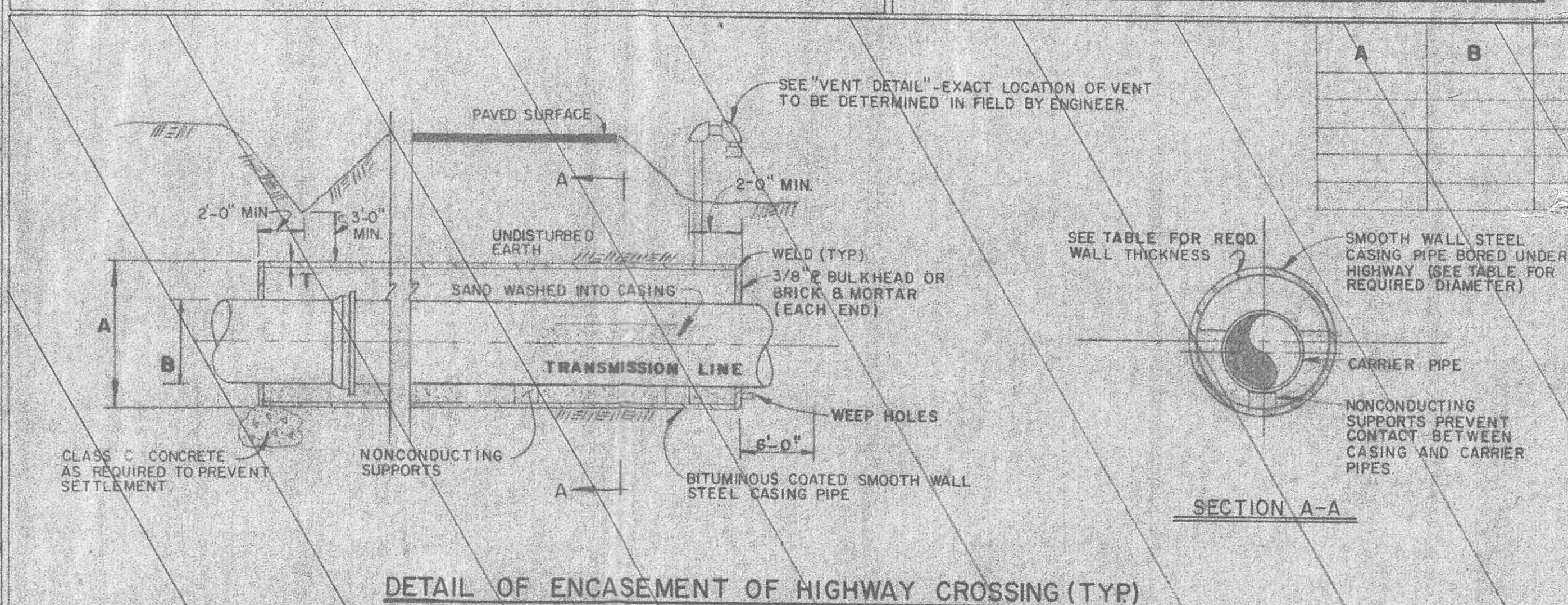
STANDARD SHALLOW MANHOLE



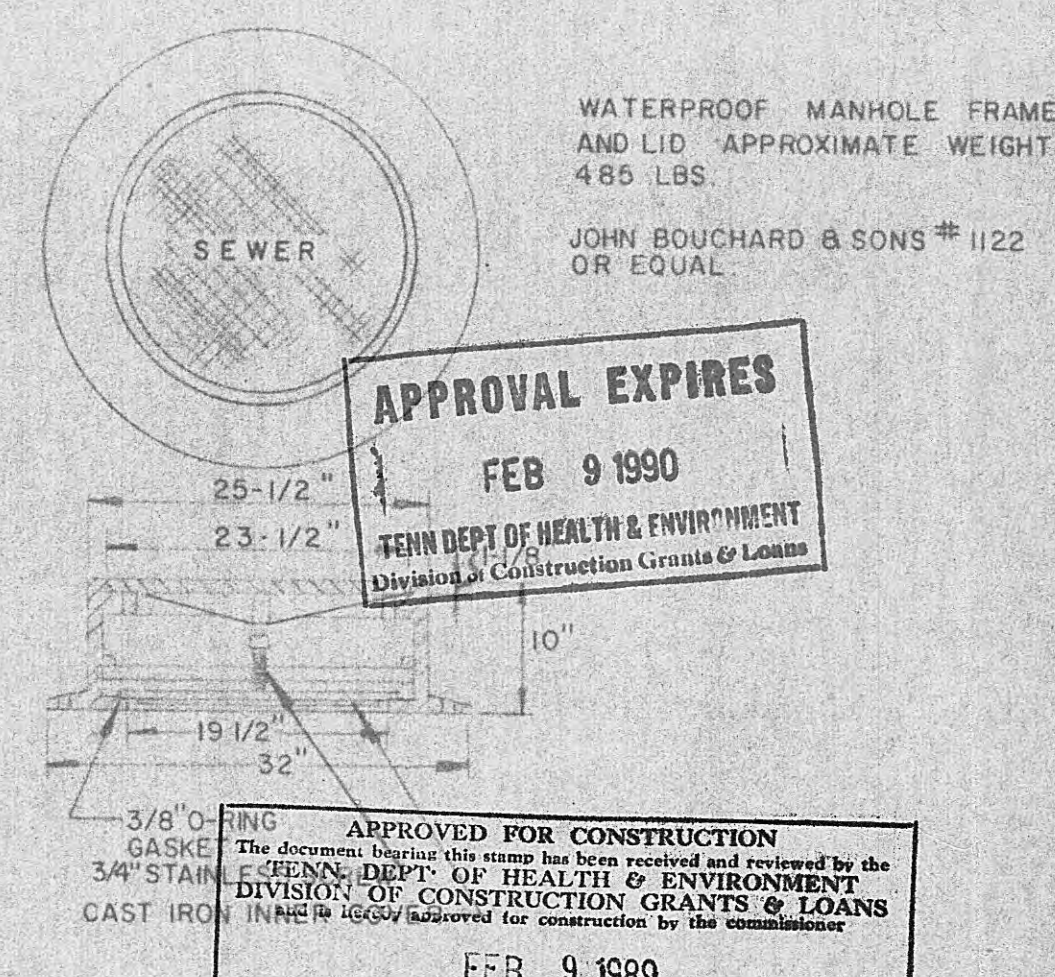
STANDARD DROP MANHOLE



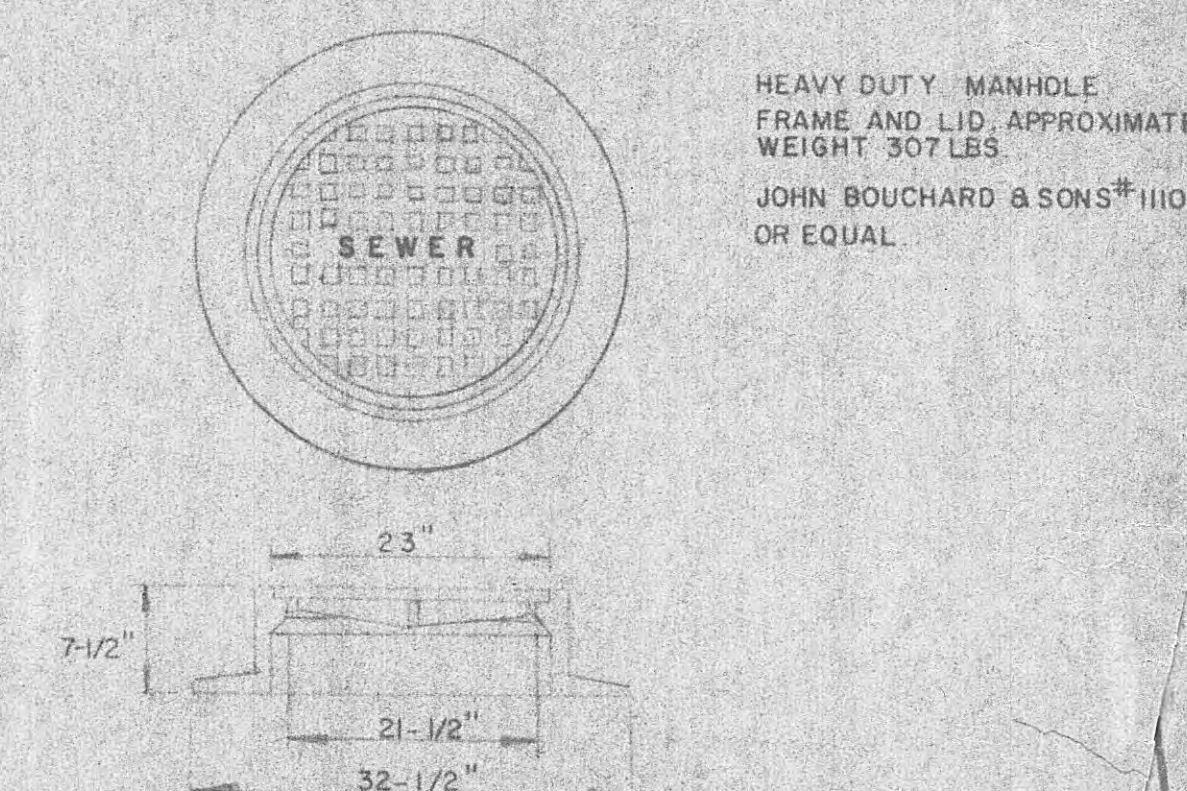
CAST-IN-PLACE MANHOLE



DETAIL OF ENCASEMENT OF HIGHWAY CROSSING (TYP)



MANHOLE FRAME AND COVER (WATERTIGHT)



MANHOLE FRAME AND COVER (TRAFFIC)

WHITE - TAYLOR - WALKER, INC.
NASHVILLE, TENNESSEE

NASHVILLE, TENNESSEE

REVISION	DATE	DESCRIPTION	BY	DESIGNED RET	SCALE NO SCALE	SANITARY SEWERAGE IMPROVEMENTS	STANDARD MANHOLE DETAILS	SHEET 12
				DRAWN TFG	DATE DEC. 88			OF
				CHECKED RET	JOB NO. 88-05		HARRIMAN, TENNESSEE	12





APPROVAL EXPIRES
FEB 9 1990
TENN DEPT OF HEALTH & ENVIRONMENT
Division of Construction Grants & Loans

APPROVED FOR CONSTRUCTION
The documents herein have been received and reviewed by the
TENN. DEPT. OF HEALTH & ENVIRONMENT
DIVISION OF CONSTRUCTION GRANTS & LOANS
and is hereby approved for construction by the commission
FEB 9 1989
APPROVED: [Signature] requires 1 year from approval date
This approval shall not be construed as creating a presumption of con-
formity or as warranting by the commission that the approved
facilities will reach the desired goals. For the Commissioner
BY: [Signature]

LEGEND

- EXISTING GRAVITY SEWER
- PROPOSED GRAVITY SEWER
- PROPOSED FORCE MAIN

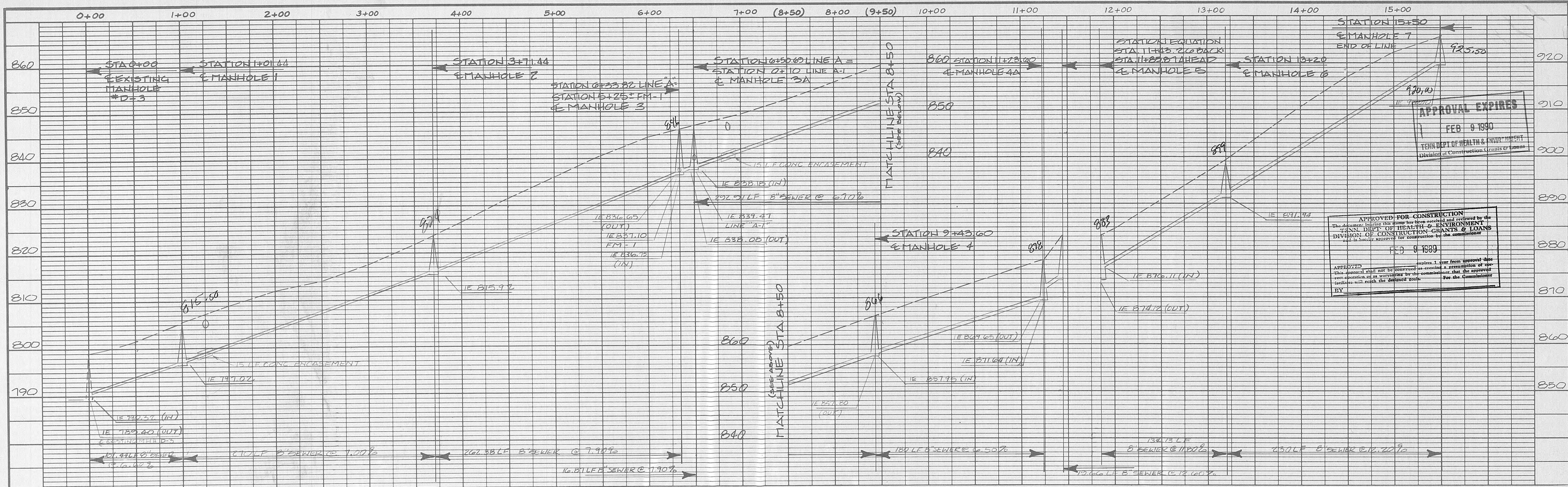


WHITE - TAYLOR - WALKER, INC.
NASHVILLE, TENNESSEE

REVISION	DATE	DESCRIPTION	BY
1	11-16-88	REWORK LINES SHIFTED TO MATCH ACTUAL FIELD SURVEY	PLE
2			
3			
4			
5			

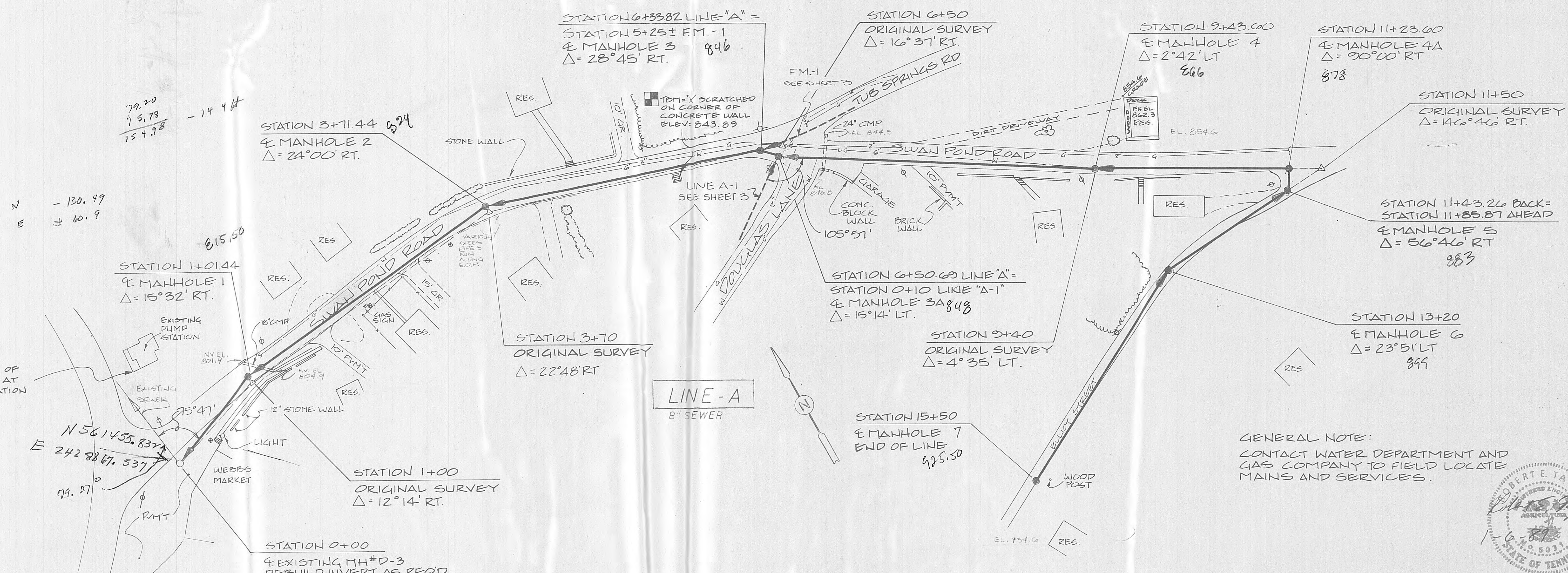
DESIGNED	RDW	SCALE	1" = 800'
DRAWN	PF	DATE	FEB. 1988
CHECKED	RDW	JOB NO.	88-05

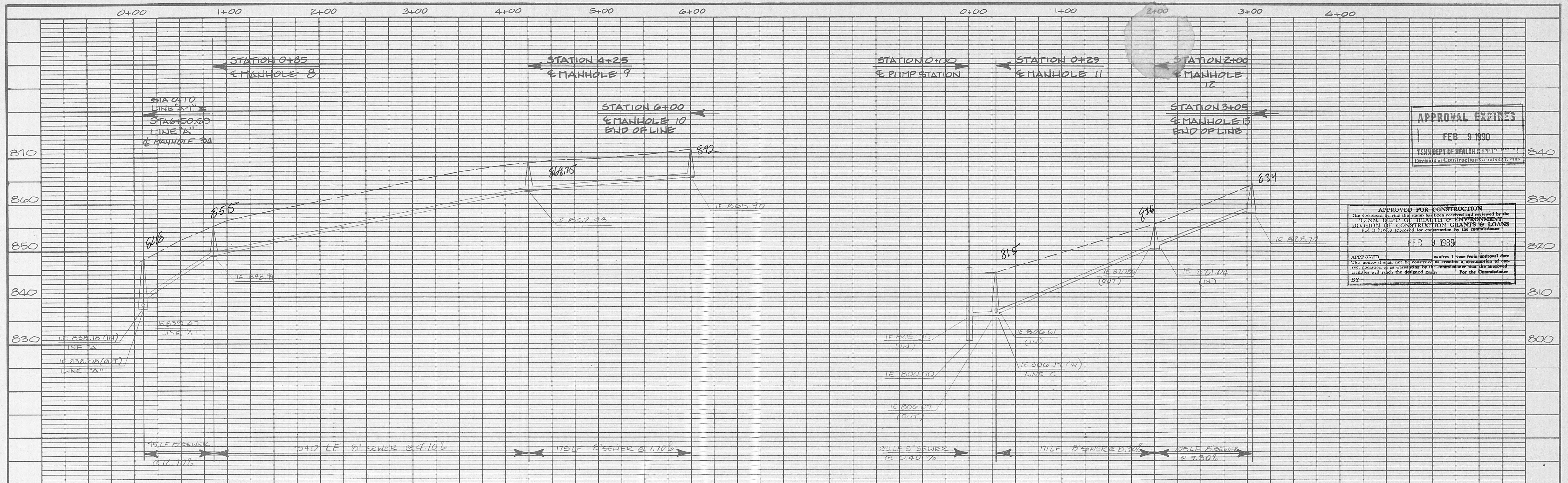
SANITARY SEWER IMPROVEMENTS	KEY MAP	SHEET	1
	HARRIMAN, TENNESSEE	OF	12



APPROVAL EXPIRES
FEB 9 1990
TENN DEPT OF HEALTH & ENVIRONMENT
Division of Construction Grants & Loans

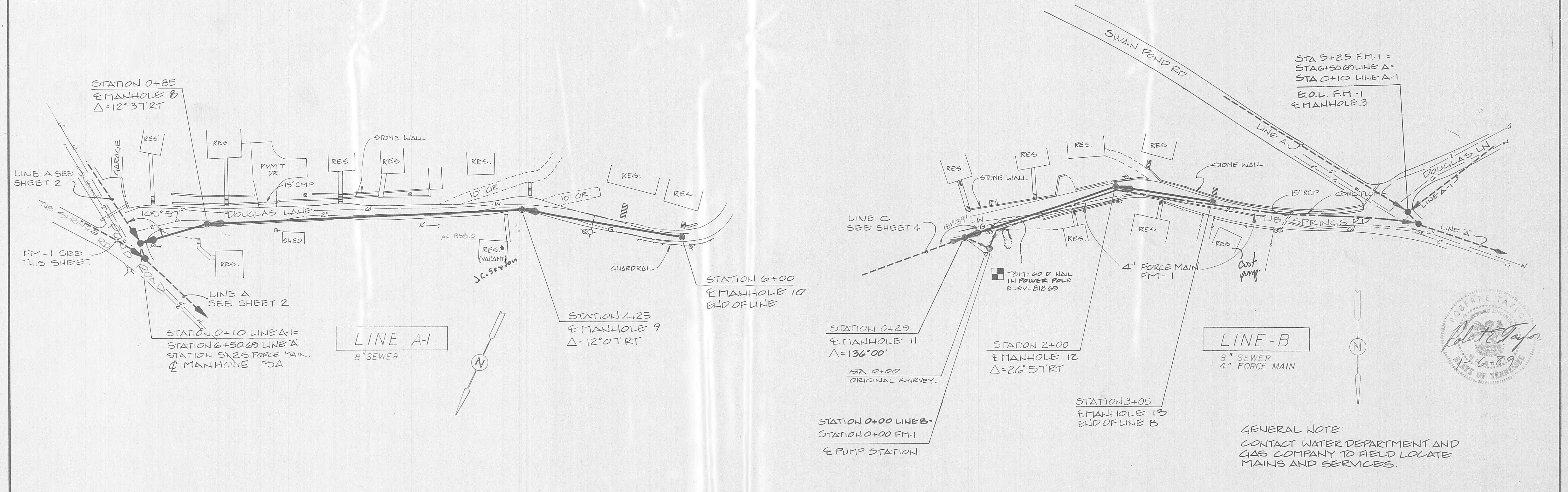
APPROVED FOR CONSTRUCTION
The Applicant hereby certifies that this project has been reviewed and approved by the
TENN. DEPT. OF HEALTH & ENVIRONMENT
DIVISION OF CONSTRUCTION GRANTS & LOANS
and is hereby approved for construction by the Commissioner
FEB 9 1989
APPROVED
This document shall not be construed as a guarantee of accuracy or a representation of the
actual conditions of the project. The approved
plan shall be used as a guide only.
BY



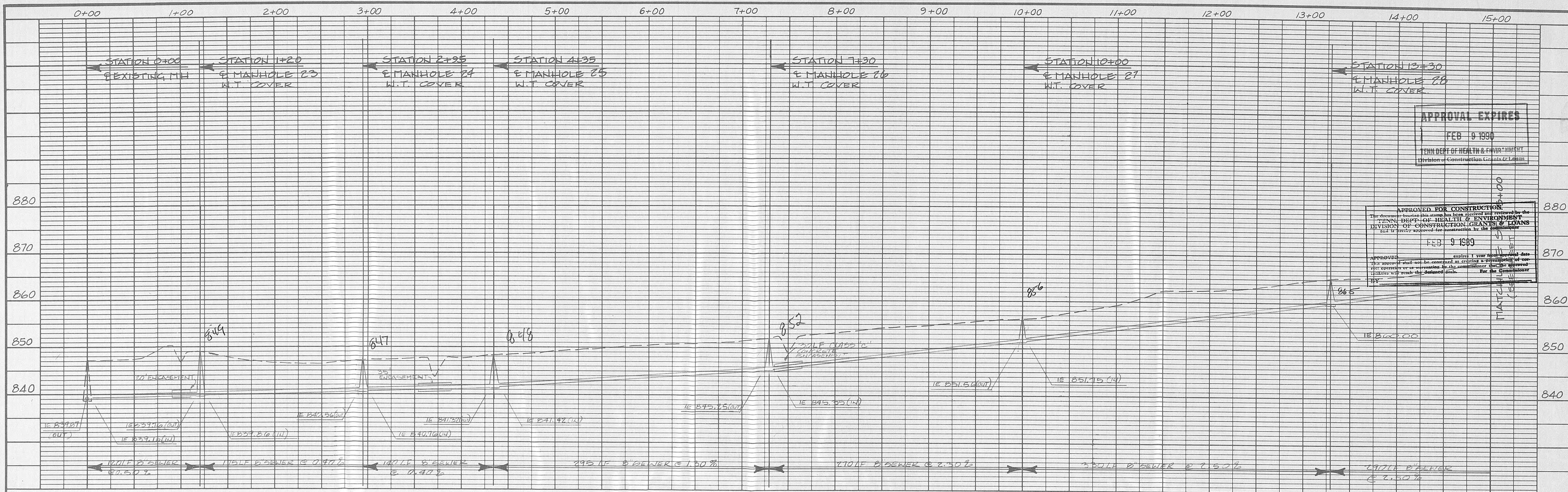


APPROVAL EXPIRES
FEB 9 1990
TENN DEPT OF HEALTH & ENVIRONMENT
Division of Construction Grants & Loans

APPROVED FOR CONSTRUCTION
The document herein has been received and reviewed by the
TENN DEPT OF HEALTH & ENVIRONMENT
DIVISION OF CONSTRUCTION GRANTS & LOANS
and is hereby approved for construction by the Commissioner
FEB 9 1989
APPROVED: [Signature] Expires 1 year from approval date
This approval shall not be construed as a guarantee of the
operation of or construction of the project or that the approved
conditions will remain the same.
BY: [Signature] For the Commissioner

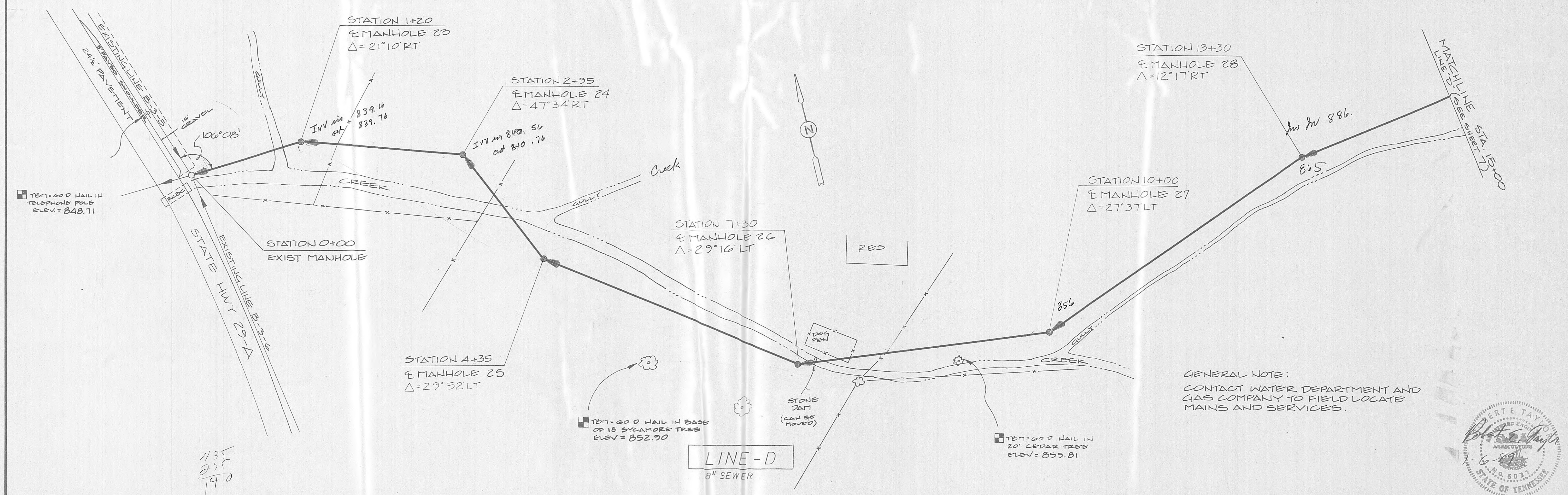


GENERAL NOTE:
CONTACT WATER DEPARTMENT AND
GAS COMPANY TO FIELD LOCATE
MAINS AND SERVICES.

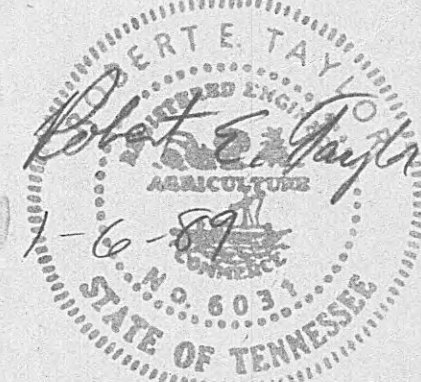


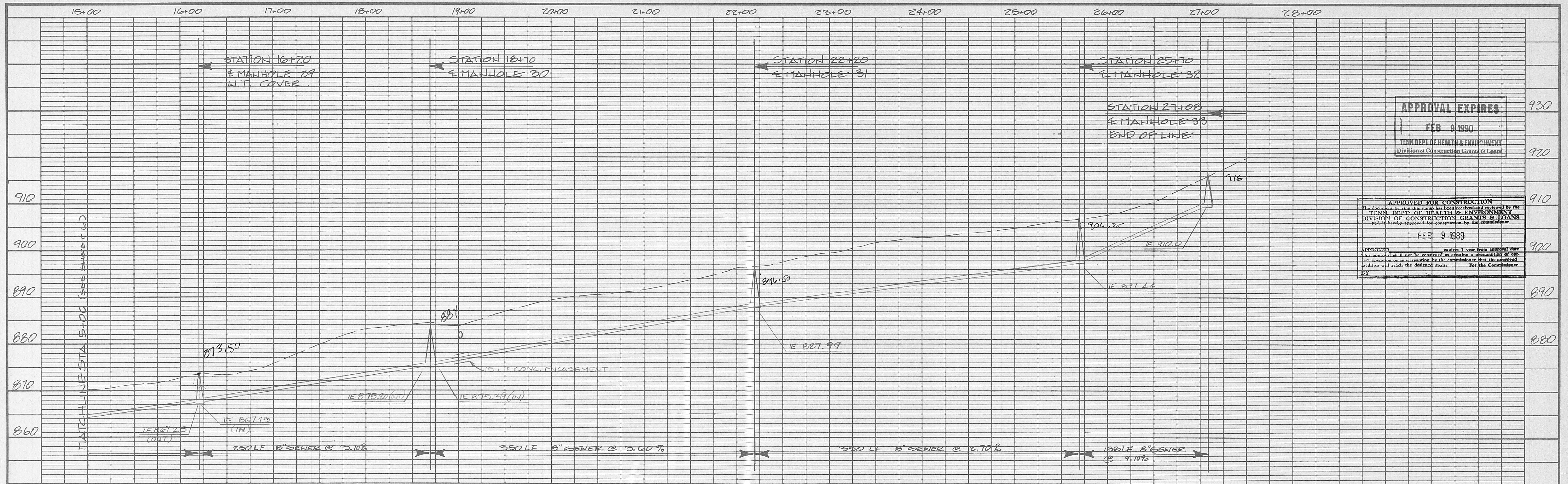
APPROVAL EXPIRES
FEB 9 1990
TENN DEPT OF HEALTH & ENVIRONMENT
Division - Construction Grants & Loans

APPROVED FOR CONSTRUCTION
The documents shown on this sheet have been reviewed and approved by the
TENN DEPT OF HEALTH & ENVIRONMENT
DIVISION OF CONSTRUCTION GRANTS & LOANS
and its policy approval for construction by the Commissioner
FEB 9 1989
APPROVED: expires 1 year from approval date.
This approval shall not be construed as creating a warranty or guar-
antee or as representing the Commissioner's belief that the approved
plans will result in the desired goals.
For the Commissioner



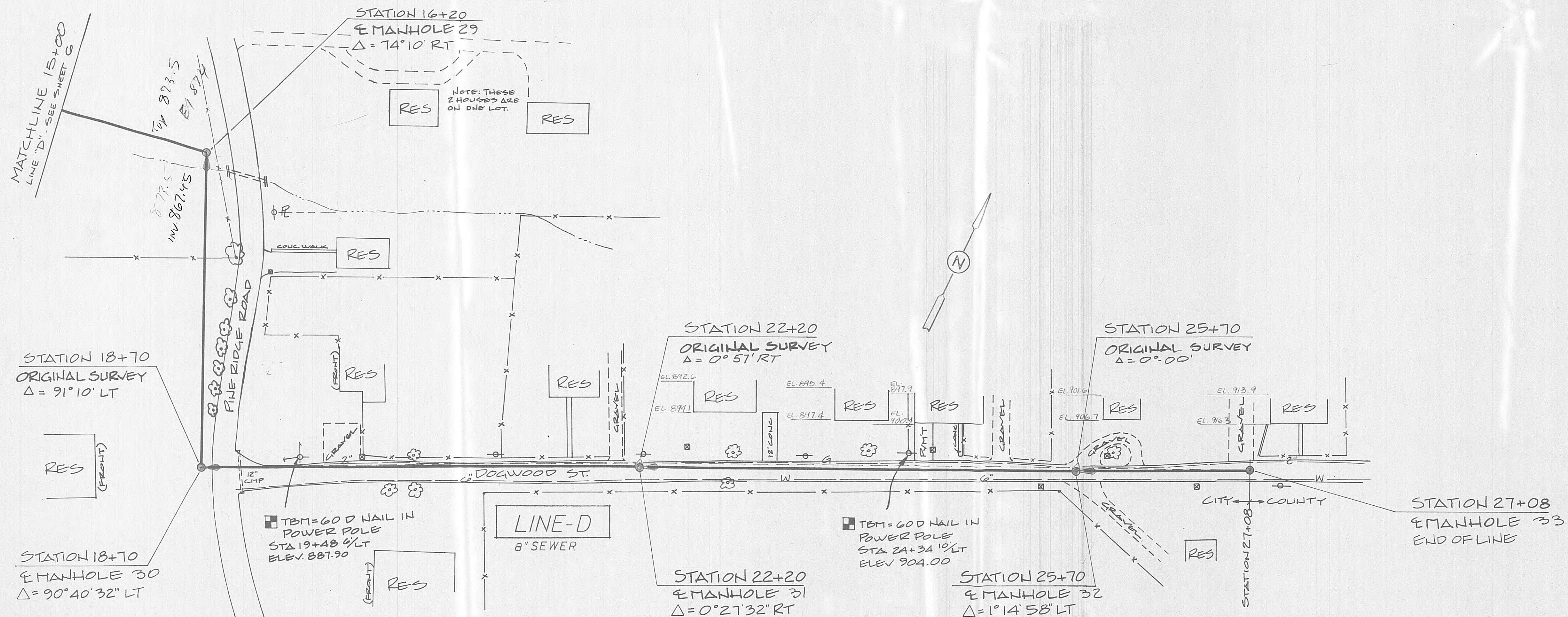
GENERAL NOTE:
CONTACT WATER DEPARTMENT AND
GAS COMPANY TO FIELD LOCATE
MAINS AND SERVICES.





APPROVAL EXPIRES
FEB 9 1990
TENN DEPT OF HEALTH & ENVIRONMENT
DIVISION OF CONSTRUCTION GRANTS & LOANS

APPROVED FOR CONSTRUCTION
The document bearing this stamp has been received and reviewed by the
TENN. DEPT. OF HEALTH & ENVIRONMENT
DIVISION OF CONSTRUCTION GRANTS & LOANS
and is hereby approved for construction by the commissioner.
FEB 9 1989
APPROVED expires 1 year from approval date
This approval shall not be construed as a warranty of correct
operation or as a warranty by the commissioner that the approved
facilities will reach the designed goals.
For the Commissioner
DY



GENERAL NOTE:
CONTACT WATER DEPARTMENT AND
GAS COMPANY TO FIELD LOCATE
MAINS AND SERVICES.

