

WOLFE BRANCH UTILITY DISTRICT

Morgan County, Tennessee

WATER LINE RELOCATION EMORY RIVER CROSSING CONTRACT 198

Project Engineer

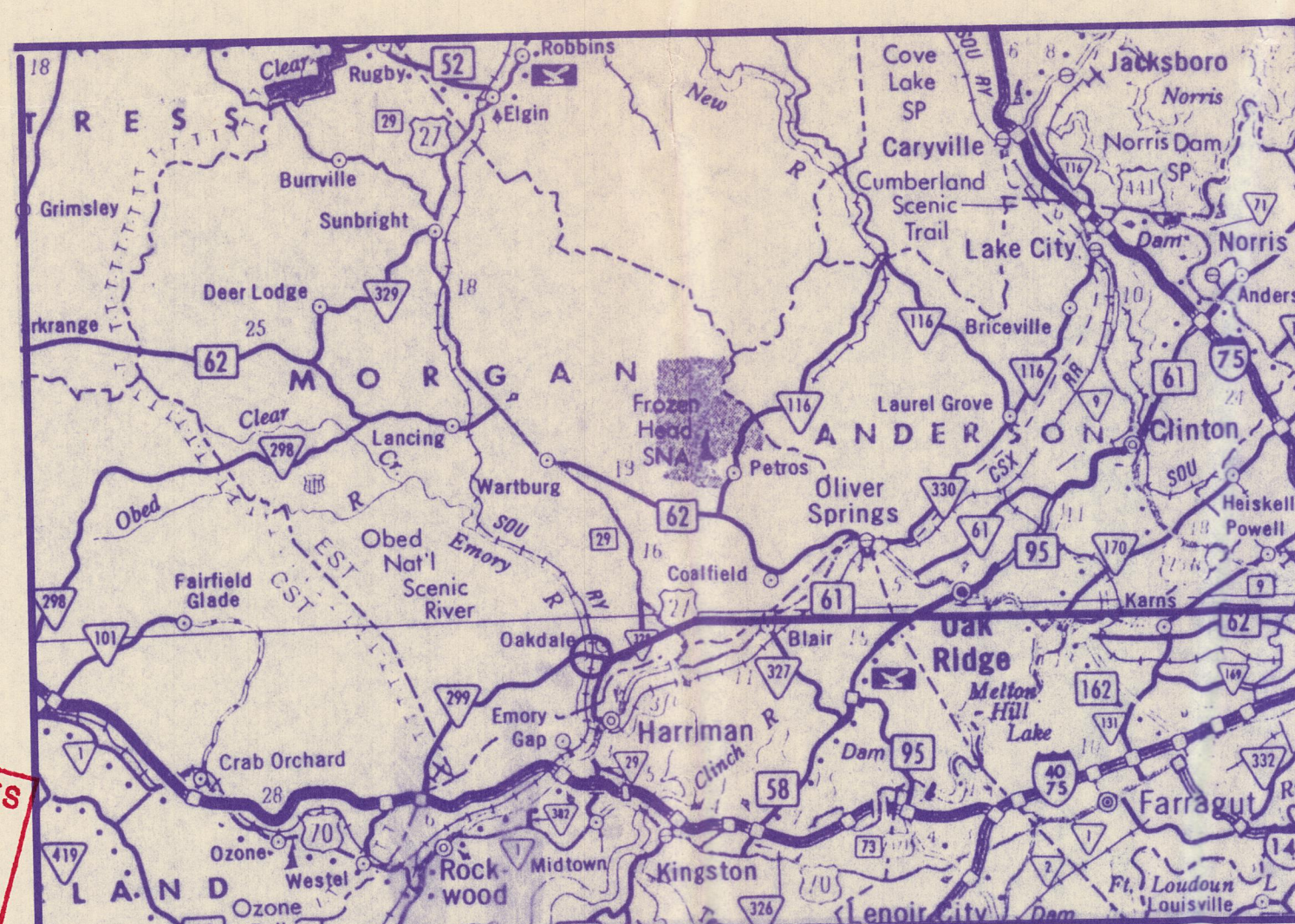


GENERAL NOTES:

- 1) **PAVEMENT REPLACEMENT:** TEMPORARY PAVEMENT REPLACEMENT SHALL BE APPLIED TO ALL PAVED SURFACES WITHIN AREAS TO BE PAVED BY THE HIGHWAY CONTRACTOR. PERMANENT PAVEMENT REPLACEMENT (HOT MIX) SHALL BE APPLIED OUTSIDE HIGHWAY CONSTRUCTION AREA.
 - 2) **CRUSHED STONE BACKFILL:** CRUSHED STONE BACKFILL SHALL BE USED WHERE LINES ARE LOCATED UNDER EXISTING AND PROPOSED DRIVING SURFACES (ROADS, DRIVEWAYS, ETC.). GRADATION OF STONE SHALL BE APPROVED BY ENGINEER.
 - 3) **WATER SERVICE:** CONTRACTOR SHALL MAINTAIN WATER SERVICE TO ALL CUSTOMERS AT ALL TIMES EXCEPT FOR BRIEF INTERRUPTIONS DURING CONNECTIONS.
 - 4) **CONTRACTOR NOTE:** CONTRACTOR IS REMINDED THAT HIGHWAY CONSTRUCTION AND OTHER UTILITY RELOCATIONS WILL BE IN PROGRESS DURING THE CONSTRUCTION OF THIS PROJECT. THE CONTRACTOR SHALL SCHEDULE AND COORDINATE HIS WORK WITH OTHER CONTRACTORS, THE UTILITY DISTRICT, AND OTHER UTILITY COMPANIES.
- ELECTRIC**
HARRIMAN UTILITIES BOARD
P.O. BOX 434
HARRIMAN, TN 37748
CHUCK FLORA - (615) 882-3242
- TELEPHONE**
HIGHLAND TELEPHONE COOPERATIVE
P.O. BOX 119
SUNBRIGHT, TN 37872
FRED TERRY - (615) 882-3242
- CATV**
BIG SOUTH FORK CABLEVISION
P.O. BOX 465
WARTBURG, TN 37887
FARON JACKSON - (615) 346-6674
- WATER**
WOLFE BRANCH UTILITY DISTRICT
2015 OAKDALE HIGHWAY
HARRIMAN, TN 37748
DONALD PAINTER - (615) 369-9292
- A CONSTRUCTION SEQUENCE SCHEDULE SHALL BE PREPARED BY THE CONTRACTOR AND SUBMITTED TO THE UTILITY DISTRICT FOR THEIR APPROVAL. PARTICULAR ATTENTION SHALL BE GIVEN TO TIE-INS, SERVICE CONNECTIONS AND ABANDONMENT OF FACILITIES.
- 5) **CONTRACTOR NOTE:** ALL RELOCATION PLANS HAVE BEEN DEVELOPED FROM HIGHWAY PLANS FURNISHED BY THE TENNESSEE DEPARTMENT OF TRANSPORTATION (T.D.O.T.). CONTRACTOR TO VERIFY WITH THE STATE THE LOCATION AND ELEVATIONS OF PROPOSED FACILITIES AND ADJUST WATER LINE FACILITIES AS APPROVED BY T.D.O.T. AND THE ENGINEER.
 - 6) ALL WATER LINES SHALL HAVE A MINIMUM OF 12 METERS (48") OF COVER, PROVIDE 1.5 METERS (60") OF COVER UNDER ROADWAYS AND DITCHES UNLESS OTHERWISE NOTED.
 - 7) AFTER ALL NEW WATER LINES ARE TESTED, DISINFECTED AND PLACED IN SERVICE, THE EXISTING WATER LINES TO BE ABANDONED SHALL BE CAPPED AS SHOWN ON PLANS AND AS DIRECTED BY ENGINEER.
 - 8) CONTRACTOR SHALL ADJUST ALL METER BOXES, VALVE BOXES, ETC. AFTER HIGHWAY CONTRACTOR COMPLETES FINAL GRADING. CONCRETE COLLARS AROUND VALVE BOXES SHALL BE POURED AT THIS TIME.
 - 9) CONTRACTOR TO VERIFY ALL LINE SIZES ON SIDE ROADS IN FIELD PRIOR TO ORDERING FITTINGS FOR TIE-OVERS, ADJUSTMENTS WILL BE MADE ACCORDINGLY.
 - 10) ALL VALVES AND OTHER SALVAGEABLE MATERIALS TO REMAIN THE PROPERTY OF THE WOLFE BRANCH UTILITY DISTRICT.

- 11) CONTRACTOR TO OBTAIN APPROVAL FROM T.D.O.T. AND MORGAN COUNTY D.O.T. FOR ALL HIGHWAY CROSSINGS AND SAFETY PROCEDURES AND ALL ACTIVITIES SHALL CONFORM TO T.D.O.T. STANDARDS AND CONDITIONS.
- 12) CONTRACTOR TO CONSTRUCT FACILITIES PRIOR TO ROAD GRADING UNLESS OTHERWISE DIRECTED.
- 13) CONTRACTOR SHALL FURNISH ALL SURVEYING PERSONNEL TO ENSURE PROPER LOCATION AND DEPTH OF LINE IN ACCORDANCE WITH THESE PLANS AND ONLY MAKE CHANGES OR MODIFICATIONS NEEDED TO AVOID CONFLICT WITH ROAD CONSTRUCTION.
- 14) **SOIL EROSION:** THE CONTRACTOR SHALL ADHERE TO ALL CONTROL MEASURES AS REQUIRED BY FEDERAL, STATE AND LOCAL AGENCIES DURING THE LIFE OF THIS PROJECT TO CONTROL EROSION AND WATER POLLUTION. THE CONTRACTOR SHALL DEVELOP AN EROSION CONTROL PLAN AND OBTAIN ACCEPTANCE FROM THE TENNESSEE DEPARTMENT OF TRANSPORTATION AND THE ENGINEER.

PLANS APPROVED BY:
Donald Painter
DONALD PAINTER, MANAGER
WOLFE BRANCH UTILITY DISTRICT 8-20-98



PROJECT
LOCATION

WS 98 1275

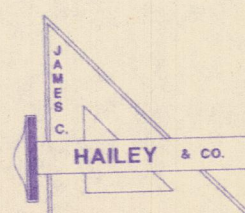
APPROVAL EXPIRES
SEP 14 1999
TENN. DEPT. OF ENVIRONMENT & CONSERVATION
DIVISION OF WATER SUPPLY

APPROVED FOR CONSTRUCTION
TENN. DEPT. OF ENVIRONMENT & CONSERVATION
DIVISION OF WATER SUPPLY
SEP 14 1998
THIS APPROVAL IS VALID FOR ONE YEAR
THIS APPROVAL SHALL BE VOIDED IF THE CONTRACTOR FAILS TO COMPLY WITH THE CONDITIONS OF THE APPROVAL
FACILITIES WILL NOT BE CONSIDERED FOR THE COMPLETION OF THE PROJECT

TDOT 65945-2541-94

SET NUMBER

JCH PROJECT NO. 96185



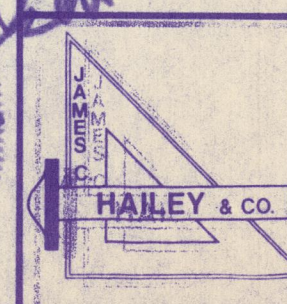
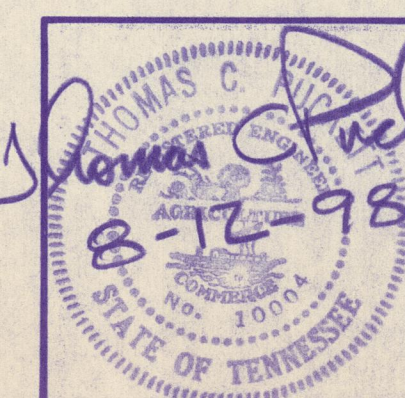
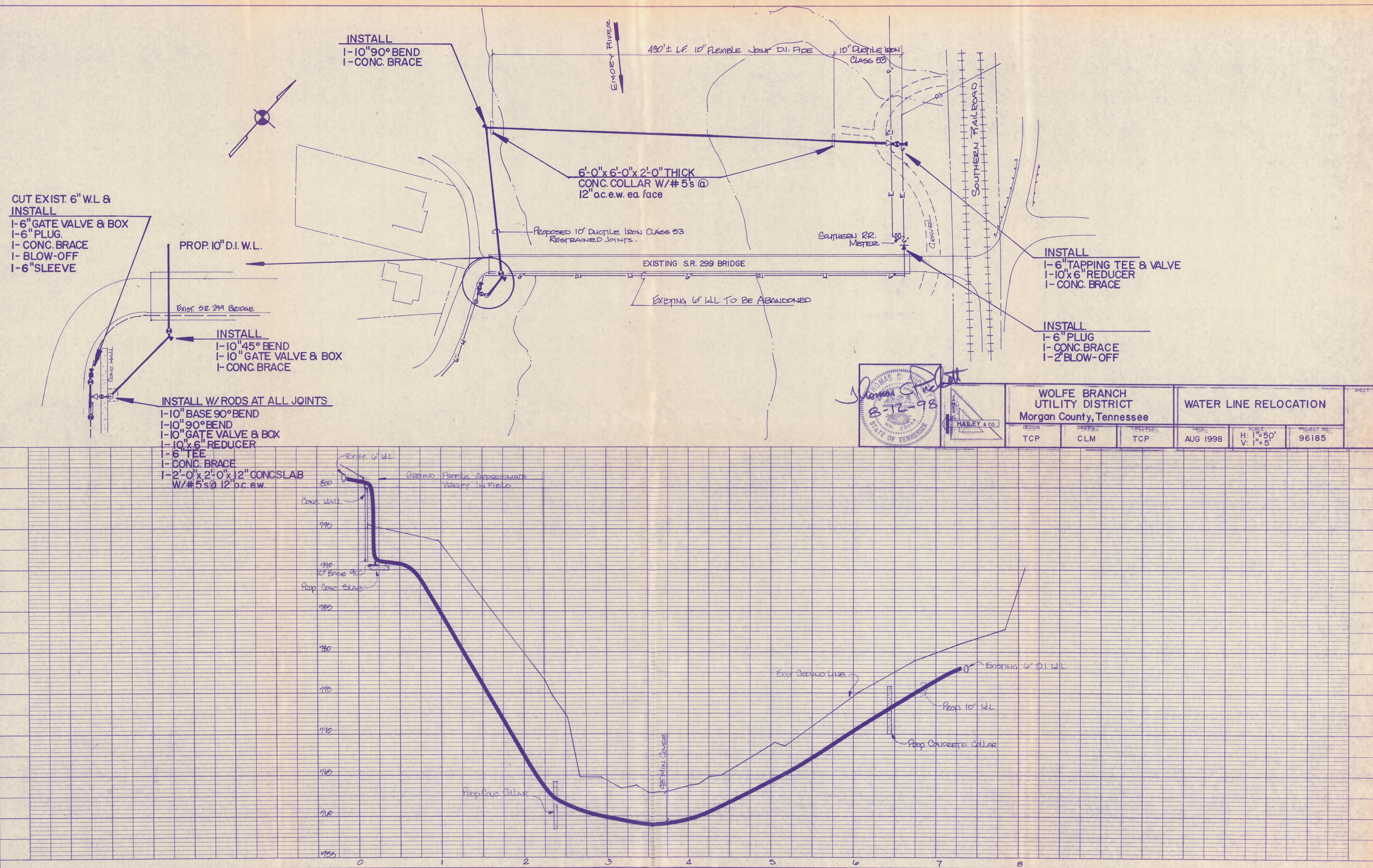
JAMES C. HAILEY & CO.

2622 OLD LEBANON ROAD - SUITE 200

NASHVILLE, TENNESSEE

PLAN	DATE	BY	DATE
DESIGNED			
PLOTTED			
ALIGNED			
CHECKED			
NO.			

PROFILE	DATE	BY	DATE
DESIGNED			
PLOTTED			
ALIGNED			
CHECKED			
NO.			



WOLFE BRANCH UTILITY DISTRICT Morgan County, Tennessee			WATER LINE RELOCATION		SHEET
DESIGN	DRAWN	CHECKED	DATE	SCALE	PROJECT NO.
TCP	CLM	TCP	AUG 1998	H: 1"=50' V: 1"=5'	96185