

TENNESSEE VALLEY AUTHORITY  
KNOXVILLE, TENNESSEE 37902

August 28, 1984

Mr. R. A. Hall  
Harriman Utilities Board  
P. O. Box 434  
Harriman, Tennessee 37748

Dear Mr. Hall:

This refers to your application to cross under the Roane-Harriman-Rockwood 161-kV Transmission Line between structures 226D and 226E with a 7.6-kV crossing.

TVA is agreeable to your proposed crossing subject to compliance with the enclosed "General Conditions Pertaining to Crossings of TVA Transmission Lines".

Enclosed are three copies of Drawing SC-61212 covering the proposed crossing. Upon completion of the work, please return one copy to this office marked to show any change made during construction and giving the date of completion.

Very truly yours,

TENNESSEE VALLEY AUTHORITY



D. C. Quarles  
Area Superintendent  
Division of Power System  
Operations

*Complete 8/30/84*

## GENERAL CONDITIONS PERTAINING TO CROSSINGS OF TVA TRANSMISSION LINES

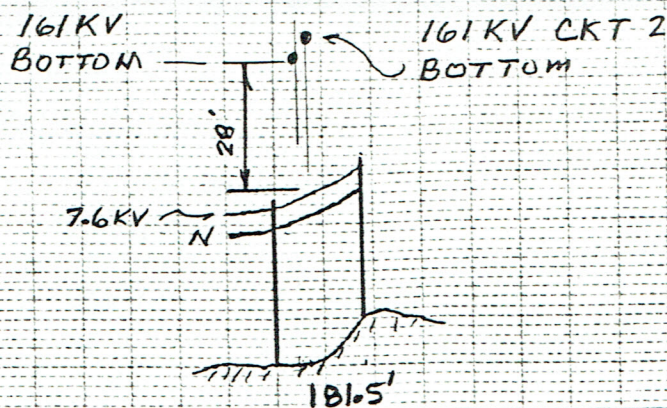
TVA will interpose no objection to the crossing as planned as long as there is no interference with TVA's operations. TVA exercises valid easement rights affecting this property, and our indication that we have no objection to the crossing proposed by you in no way affects or changes such prior rights as TVA has to construct, operate, protect, maintain, and readjust facilities within the right of way.

You are requested to caution your construction forces or your contractor against operating cranes or other equipment in a manner that would endanger TVA's lines or personnel operating the equipment. You or your contractor should be acquainted with the Tennessee Law, Chapter 289 of the Public Acts of 1955, concerning your responsibility in connection with construction activities near energized electric facilities.

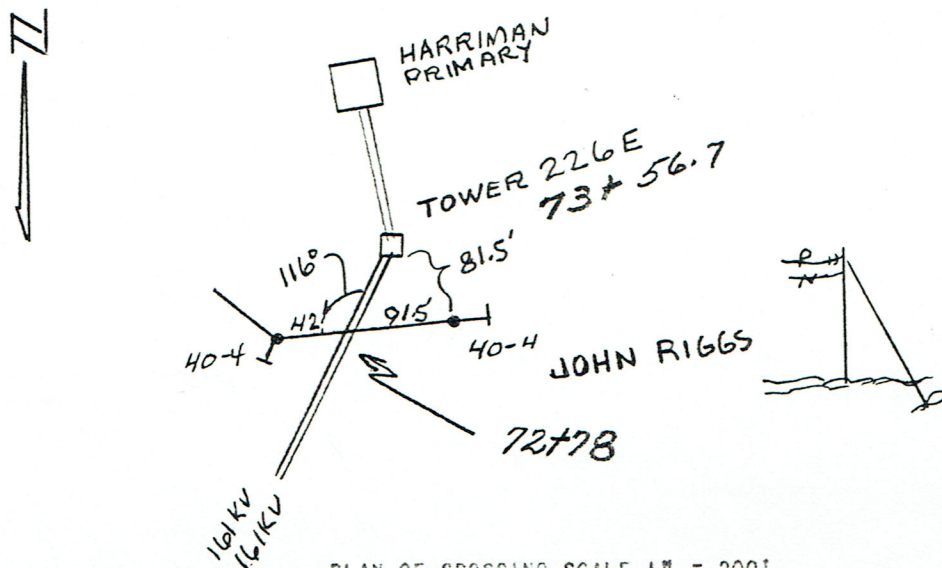
If blasting is done on the right of way, TVA's lines should be protected against blast damage. TVA should be given 48 hours' notice prior to such blasting operations or on the use of cranes on the right of way so our dispatchers will know of the work and so one of our representatives can be present on the job. We will expect reimbursement of the cost of any damage to our lines resulting from the construction work. TVA also warns that heavy equipment is used frequently on our right of way, and that any facilities which you may bury should be buried deep enough for adequate protection.

Any cathodic protection system used should be such as to cause no interference with or damage to our transmission lines.





PROFILE OF CROSSING SPAN OVER T.V.A. RIGHT-OF-WAY- SCALE 1"=40' VERT. AND 1"=400' HOR.



PLAN OF CROSSING SCALE 1" = 200'

SKETCH SHOWING APPROXIMATE ANGLE OF CROSSING, NORTH ARROW, DISTANCES TO ADJACENT STRUCTURES OF EACH LINE, T.V.A. STRUCTURE NUMBERS, CONDUCTOR SIZE AND CONFIGURATION OF CROSSING CIRCUIT

LINE CROSSING DATA				DATA FROM T.V.A. RECORDS			
A	CONDUCTOR HEIGHT AT CROSSING, AT TEMP. 85°F	PRES-ENT	PRO-POSED	A	CONDUCTOR HEIGHT AT CROSSING WITH SAG AT 120°F FINAL		
1	T.V.A. POWER CONDUCTOR, LOWEST	65'		1	T.V.A. POWER CONDUCTOR	65'	
2	T.V.A. TELEPHONE CONDUCTOR	N/A		2	T.V.A. TELEPHONE CONDUCTOR		
3	CROSSING CONDUCTOR, HIGHEST	30'		B	SIZE & MATERIAL OF POWER CONDUCTOR	ACSR 954 MCM	
4	CROSSING CONDUCTOR, LOWEST	25'		C	SIZE & MATERIAL OF TELEPHONE CONDUCTOR		
B	SIZE & MATERIAL OF CROSSING CONDUCTORS	1/0 ACSR		D	STATUS OF R/W	EASEMENT	
C	MINIMUM CLEARANCE OF CROSSING CONDUCTORS OVER T.V.A. R/W	24'		E	SURVEY STATIONS AT ADJACENT CROSSING STRUCTURES	226D 59+35 226E 73+56.7	
D	IS LOCATION ACCESSIBLE TO VEHICLES	YES		F	PROFILE DRAWING NO. & SHEET NO.	4A LW-3800	

SEE DWG. SC-22467, SHEETS 1 & 2 SHOWING SAMPLE APPLICATION, RECOMMENDED MIN. CLEARANCES, ETC. IN ANY CASE THE REQUIREMENTS OF THE LATEST EDITION OF THE NATIONAL ELECTRICAL SAFETY CODE SHALL BE MET.

BETWEEN SUBSTATION HARRIMAN & SUBSTATION ROANE

CROSSING REPORTED COMPLETE  
AS SHOWN \_\_\_\_\_  
SIG. \_\_\_\_\_ DATE \_\_\_\_\_

### HARRIMAN UTILITY BOARD

TO THE TENNESSEE VALLEY AUTHORITY

CONSTRUCTION DATA FOR THE PROPOSED 7.62 KV. CROSSING UNDER  
THE T.V.A. 161 KV. HARR-ROANE-ROCKWOOD-HARR LINE  
NEAR HARRIMAN (TOWN) ROANE (COUNTY)  
TENN. (STATE), BETWEEN T.V.A. STRS. NO. 226E AND 226D

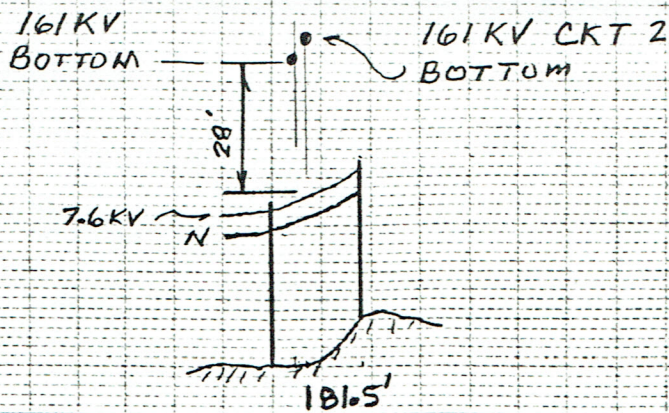
DRAWN BH SUBMITTED \_\_\_\_\_ APPROVED P.M. Connell DATE 8-22-84  
TRACED \_\_\_\_\_  
CHECKED \_\_\_\_\_  
CORRECT \_\_\_\_\_

ISSUE \_\_\_\_\_ REVISION \_\_\_\_\_ DATE \_\_\_\_\_ SIG. \_\_\_\_\_

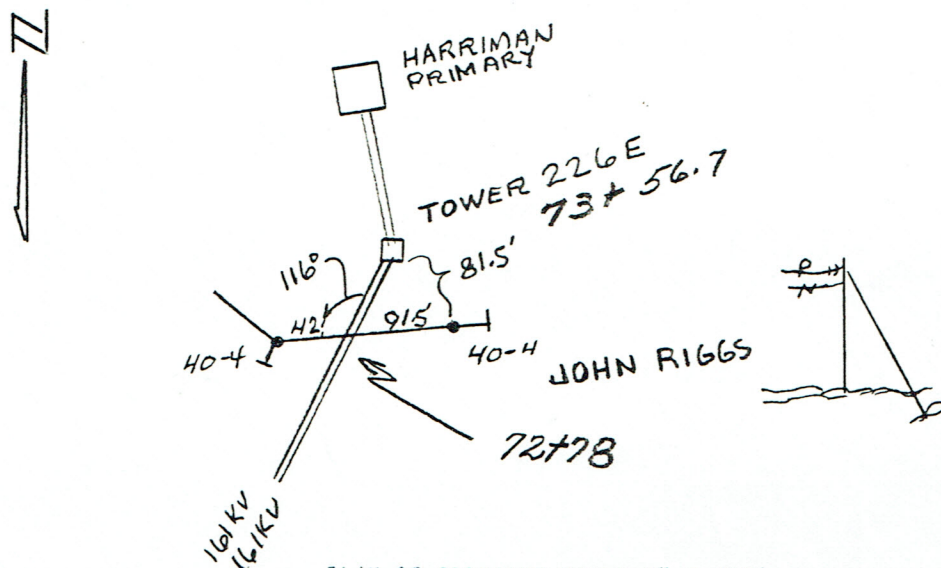
5C-61212

LW-3800 SHEET 4A





PROFILE OF CROSSING SPAN OVER T.V.A. RIGHT-OF-WAY- SCALE 1"=40' VERT. AND 1"=400' HOR.



PLAN OF CROSSING SCALE 1" = 200'

SKETCH SHOWING APPROXIMATE ANGLE OF CROSSING, NORTH ARROW, DISTANCES TO ADJACENT STRUCTURES OF EACH LINE, T.V.A. STRUCTURE NUMBERS, CONDUCTOR SIZE AND CONFIGURATION OF CROSSING CIRCUIT

LINE CROSSING DATA			DATA FROM T.V.A. RECORDS		
A	CONDUCTOR HEIGHT AT CROSSING, AT TEMP. <u>85°F</u>	PRES-ENT	A	CONDUCTOR HEIGHT AT CROSSING WITH SAG AT 120°F. FINAL	
1	T.V.A. POWER CONDUCTOR, LOWEST	65'	1	T.V.A. POWER CONDUCTOR	65'
2	T.V.A. TELEPHONE CONDUCTOR	N/A	2	T.V.A. TELEPHONE CONDUCTOR	
3	CROSSING CONDUCTOR, HIGHEST	30'	B	SIZE & MATERIAL OF POWER CONDUCTOR	ACSR 954 MCM
4	CROSSING CONDUCTOR, LOWEST	25'	C	SIZE & MATERIAL OF TELEPHONE CONDUCTOR	
B	SIZE & MATERIAL OF CROSSING CONDUCTORS	1/0 ACSR	D	STATUS OF R/W	EASEMENT
C	MINIMUM CLEARANCE OF CROSSING CONDUCTORS OVER T.V.A. R/W	24'	E	SURVEY STATIONS AT ADJACENT CROSSING STRUCTURES	226D 59+35 226E 73+56.7
D	IS LOCATION ACCESSIBLE TO VEHICLES	YES	F	PROFILE DRAWING NO. & SHEET NO.	4A LW-3800

SEE DWG. SC-22467, SHEETS 1 & 2 SHOWING SAMPLE APPLICATION, RECOMMENDED MIN. CLEARANCES, ETC. IN ANY CASE THE REQUIREMENTS OF THE LATEST EDITION OF THE NATIONAL ELECTRICAL SAFETY CODE SHALL BE MET.

BETWEEN SUBSTATION HARRIMAN & SUBSTATION ROANE

HARRIMAN UTILITY BOARD

TO THE TENNESSEE VALLEY AUTHORITY

CONSTRUCTION DATA FOR THE PROPOSED 7.62 KV. CROSSING UNDER  
THE T.V.A. 161 KV. HARR-ROANE-ROCKWOOD-HARR LINE  
NEAR HARRIMAN (TOWN) ROANE (COUNTY)  
TENN. (STATE), BETWEEN T.V.A. STRS. NO. 226E AND 226D

CROSSING REPORTED COMPLETE AS SHOWN	SIG.	DATE	DRAWN <u>RH</u>	SUBMITTED	APPROVED <u>P.M. Connell</u>	DATE - <u>8-22-84</u>
			TRACED			
			CHECKED			
ISSUE	REVISION	DATE	SIG	CORRECT		<u>5C-61212</u>

LW-3800 SHEET 4A