

TENNESSEE VALLEY AUTHORITY

KNOXVILLE, TENNESSEE 37902

September 28, 1984

Mr. Charles B. Flora
Harriman Utilities Board
P. O. Box 434
Harriman, Tennessee 37748

Dear Mr. Flora:

This refers to your application to cross under the Harriman-Harriman District No. 1 69-kV Transmission Line between structures 55 and 56 with a 7.2-kV crossing.

TVA is agreeable to your proposed crossing subject to compliance with the enclosed "General Conditions Pertaining to Crossings of TVA Transmission Lines".

Enclosed are are three copies of Drawing SC-61214 covering the proposed crossing. Upon completion of the work, please return one copy to this office marked to show any change made during construction and giving the date of completion.

Very truly yours,

TENNESSEE VALLEY AUTHORITY



D. C. Quarles
Area Superintendent
Division of Power System
Operations

Enclosures

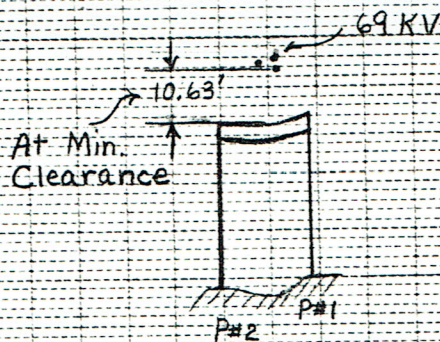
GENERAL CONDITIONS PERTAINING TO CROSSINGS OF TVA TRANSMISSION LINES

TVA will interpose no objection to the crossing as planned as long as there is no interference with TVA's operations. TVA exercises valid easement rights affecting this property, and our indication that we have no objection to the crossing proposed by you in no way affects or changes such prior rights as TVA has to construct, operate, protect, maintain, and readjust facilities within the right of way.

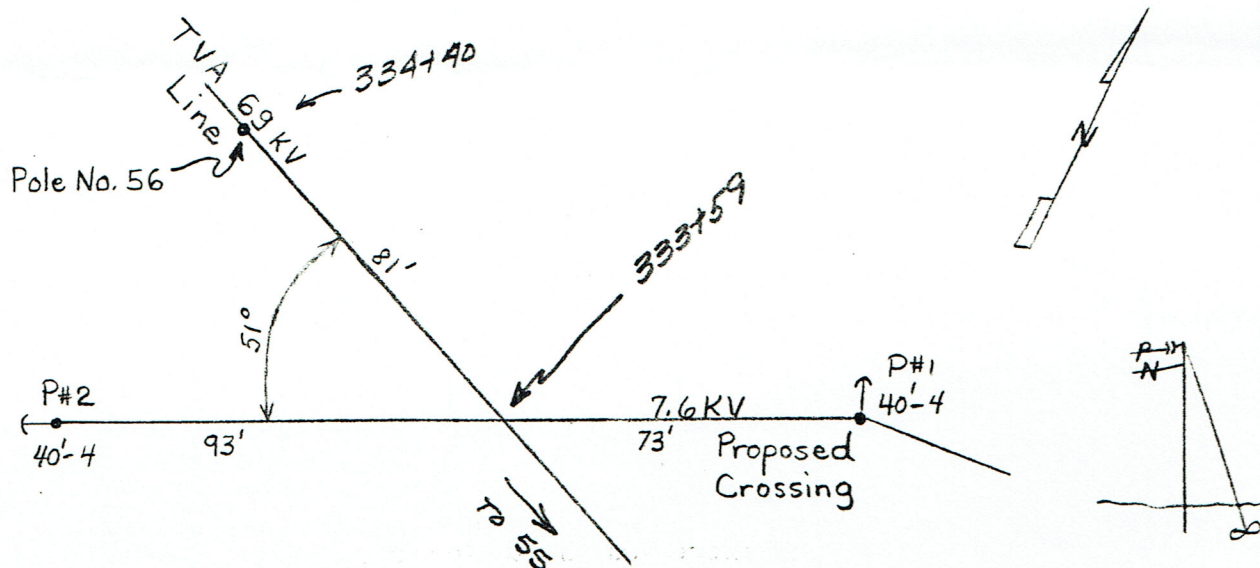
You are requested to caution your construction forces or your contractor against operating cranes or other equipment in a manner that would endanger TVA's lines or personnel operating the equipment. You or your contractor should be acquainted with the Tennessee Law, Chapter 289 of the Public Acts of 1955, concerning your responsibility in connection with construction activities near energized electric facilities.

If blasting is done on the right of way, TVA's lines should be protected against blast damage. TVA should be given 48 hours' notice prior to such blasting operations or on the use of cranes on the right of way so our dispatchers will know of the work and so one of our representatives can be present on the job. We will expect reimbursement of the cost of any damage to our lines resulting from the construction work. TVA also warns that heavy equipment is used frequently on our right of way, and that any facilities which you may bury should be buried deep enough for adequate protection.

Any cathodic protection system used should be such as to cause no interference with or damage to our transmission lines.



PROFILE OF CROSSING SPAN OVER T.V.A. RIGHT-OF-WAY- SCALE 1"=40' VERT. AND 1"=400' HOR.



PLAN OF CROSSING SCALE 1" = 200'

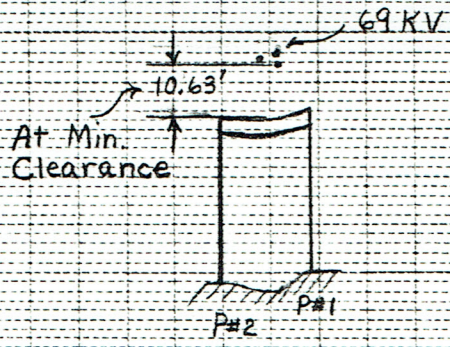
SKETCH SHOWING APPROXIMATE ANGLE OF CROSSING, NORTH ARROW, DISTANCES TO ADJACENT STRUCTURES OF EACH LINE, T.V.A. STRUCTURE NUMBERS, CONDUCTOR SIZE AND CONFIGURATION OF CROSSING CIRCUIT

LINE CROSSING DATA			DATA FROM T.V.A. RECORDS		
A	CONDUCTOR HEIGHT AT CROSSING, AT TEMP. ____° F.	PRES- ENT PRO- POSED	A	CONDUCTOR HEIGHT AT CROSSING WITH SAG AT 120° F. FINAL.	
1	T.V.A. POWER CONDUCTOR, LOWEST	47'	1	T.V.A. POWER CONDUCTOR	44'
2	T.V.A. TELEPHONE CONDUCTOR	N.A.	2	T.V.A. TELEPHONE CONDUCTOR	
3	CROSSING CONDUCTOR, HIGHEST	35'	B	SIZE & MATERIAL OF POWER CONDUCTOR	4/D ACSR
4	CROSSING CONDUCTOR, LOWEST	31'	C	SIZE & MATERIAL OF TELEPHONE CONDUCTOR	
B	SIZE & MATERIAL OF CROSSING CONDUCTORS	#2 ACSR	D	STATUS OF R/W	EASEMENT
C	MINIMUM CLEARANCE OF CROSSING CONDUCTORS OVER T.V.A. R/W	30.62'	E	SURVEY STATIONS AT ADJACENT CROSSING STRUCTURES	STR 55 327+90 STR 56 334+40
D	IS LOCATION ACCESSIBLE TO VEHICLES	Yes	F	PROFILE DRAWING NO. & SHEET NO.	70 Lw 1655

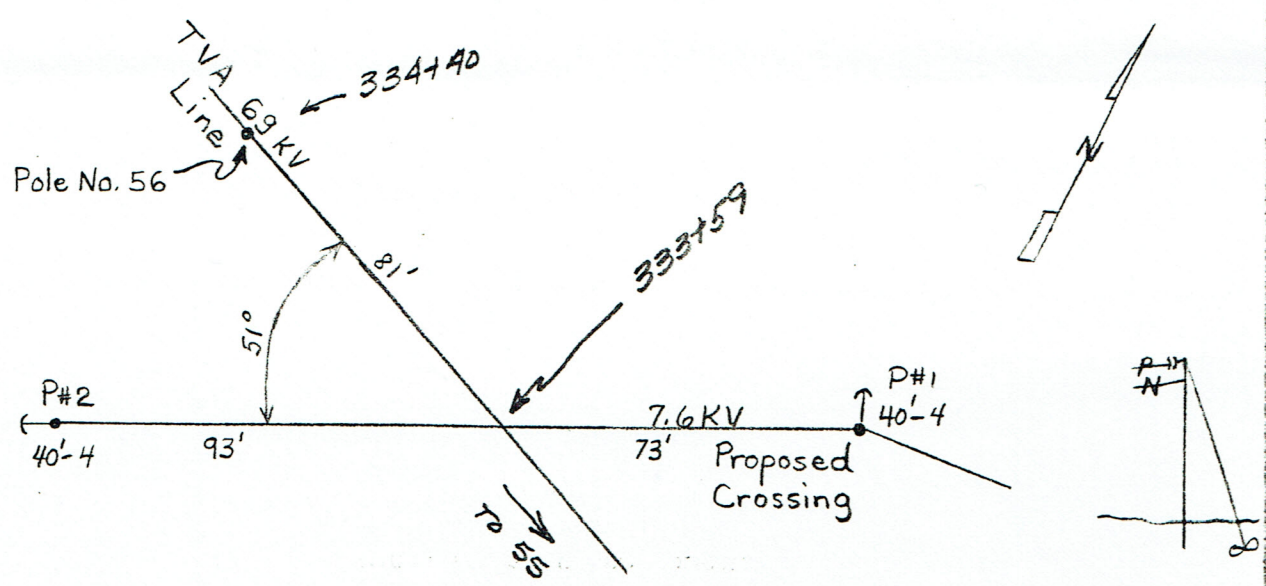
SEE DWG. SC-22467, SHEETS 1 & 2 SHOWING SAMPLE APPLICATION, RECOMMENDED MIN. CLEARANCES, ETC. IN ANY CASE THE REQUIREMENTS OF THE LATEST EDITION OF THE NATIONAL ELECTRICAL SAFETY CODE SHALL BE MET.

BETWEEN SUBSTATION OLIVER SPRINGS & SUBSTATION WARTBURG

CROSSING REPORTED COMPLETE AS SHOWN _____ SIG. _____ DATE _____				<u>Harriman Utility Board</u> TO THE TENNESSEE VALLEY AUTHORITY CONSTRUCTION DATA FOR THE PROPOSED <u>7.62</u> KV. CROSSING UNDER THE T.V.A. <u>69</u> KV. <u>Harriman-Petros-Wartburg Sub. Tap</u> LINE NEAR <u>Wartburg</u> (TOWN) <u>Morgan</u> (COUNTY) <u>Tenn.</u> (STATE), BETWEEN T.V.A. STRS. NO. _____ AND _____			
				DRAWN <u>C.E.</u>	SUBMITTED _____	APPROVED <u>P.M. Connell</u>	DATE <u>9-12-84</u>
				TRACED _____			
				CHECKED _____			
ISSUE _____	REVISION _____	DATE _____	SIG. _____	CORRECT _____		<u>9/28/84</u>	<u>SC-61214</u>



PROFILE OF CROSSING SPAN OVER T.V.A. RIGHT-OF-WAY-SCALE 1"=40' VERT. AND 1"=400' HOR.



PLAN OF CROSSING SCALE 1" = 200'

SKETCH SHOWING APPROXIMATE ANGLE OF CROSSING, NORTH ARROW, DISTANCES TO ADJACENT STRUCTURES OF EACH LINE, T.V.A. STRUCTURE NUMBERS, CONDUCTOR SIZE AND CONFIGURATION OF CROSSING CIRCUIT

LINE CROSSING DATA			DATA FROM T.V.A. RECORDS		
A	CONDUCTOR HEIGHT AT CROSSING, AT TEMP. _____° F.	PRES-ENT	PRO-POSED	A	CONDUCTOR HEIGHT AT CROSSING WITH SAG AT 120°F. FINAL.
1	T.V.A. POWER CONDUCTOR, LOWEST	47'		1	T.V.A. POWER CONDUCTOR
2	T.V.A. TELEPHONE CONDUCTOR	N.A.		2	T.V.A. TELEPHONE CONDUCTOR
3	CROSSING CONDUCTOR, HIGHEST	35'		3	SIZE & MATERIAL OF POWER CONDUCTOR
4	CROSSING CONDUCTOR, LOWEST	31'		4	SIZE & MATERIAL OF TELEPHONE CONDUCTOR
B	SIZE & MATERIAL OF CROSSING CONDUCTORS	#2ACSR		D	STATUS OF R/W
C	MINIMUM CLEARANCE OF CROSSING CONDUCTORS OVER T.V.A. R/W	30.62'		E	SURVEY STATIONS AT ADJACENT CROSSING STRUCTURES
D	IS LOCATION ACCESSIBLE TO VEHICLES	Yes		F	PROFILE DRAWING NO. & SHEET NO.

SEE DWG. SC-22467, SHEETS 1 & 2 SHOWING SAMPLE APPLICATION, RECOMMENDED MIN. CLEARANCES, ETC. IN ANY CASE THE REQUIREMENTS OF THE LATEST EDITION OF THE NATIONAL ELECTRICAL SAFETY CODE SHALL BE MET.

BETWEEN SUBSTATION OLIVER SPRINGS & SUBSTATION WARTBURG

CROSSING REPORTED COMPLETE AS SHOWN _____ SIG. _____ DATE _____		Harriman Utility Board TO THE TENNESSEE VALLEY AUTHORITY				
		CONSTRUCTION DATA FOR THE PROPOSED <u>7.62</u> KV. CROSSING UNDER THE T.V.A. <u>69</u> KV. <u>Harriman-Petros-Wartburg Sub. Tap</u> LINE NEAR <u>Wartburg</u> (TOWN) <u>Morgan</u> (COUNTY) <u>Tenn.</u> (STATE), BETWEEN T.V.A. STRS. NO. _____ AND _____				
ISSUE	REVISION	DATE	SIG.	DRAWN <u>C.E.</u> TRACED _____ CHECKED _____ CORRECT _____	SUBMITTED _____ APPROVED <u>P.M. Connell</u> <u>9/28/84</u>	DATE <u>9-12-84</u> <u>SC-61214</u>