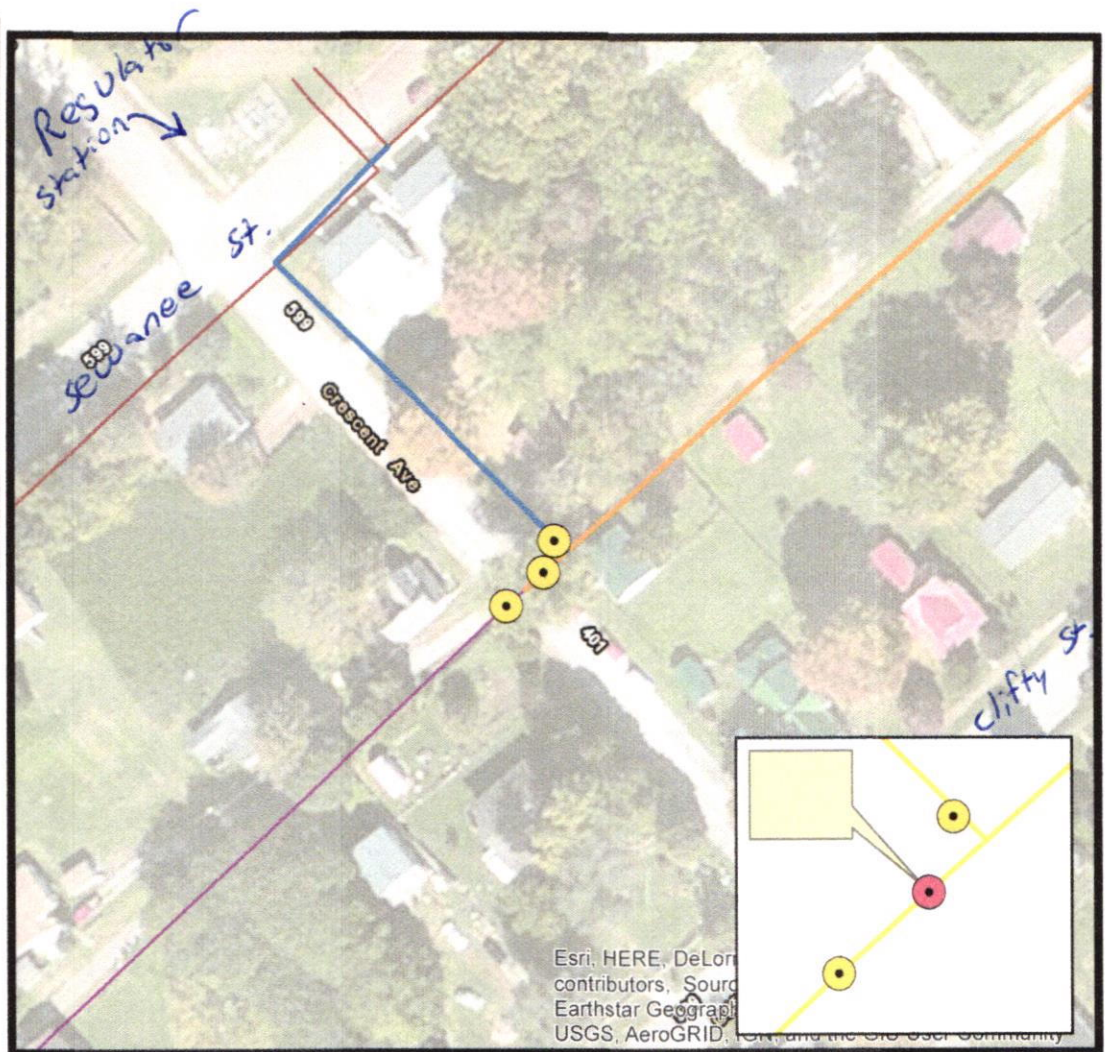


1 inch = 100 feet

Legend

Gas Valve

**Gas Line
DIAMETER**



GAS VALVE STREET LOCATION

Alley off Crescent between Sewanee and Clifty

GAS VALVE INSPECTION						
DATE	SIZE	TYPE	OPERATIONAL		INSPECTED BY	COMMENTS
			YES	NO		
9-17	4"	Poly	✓		T.J.	C.I. Project
7-12-18		Poly	✓		T.J. A.H.	
7-10-19			✓		T-J. CW	
9-28-20			✓		T.J. Tyler	
8-17-21	4"	Poly	✓		John Tyler	

[illegible]

HARRIMAN UTILITY BOARD, HARRIMAN, TENNESSEE