

GAS VALVE NUMBER/S

158A

MAP INDEX NUMBER

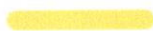
MAP INDEX QUADRANT

TN St. Plane Coords, NAD 83:
Not to Scale
(sub-meter accuracy only)

 Gas Valve

Gas Lines

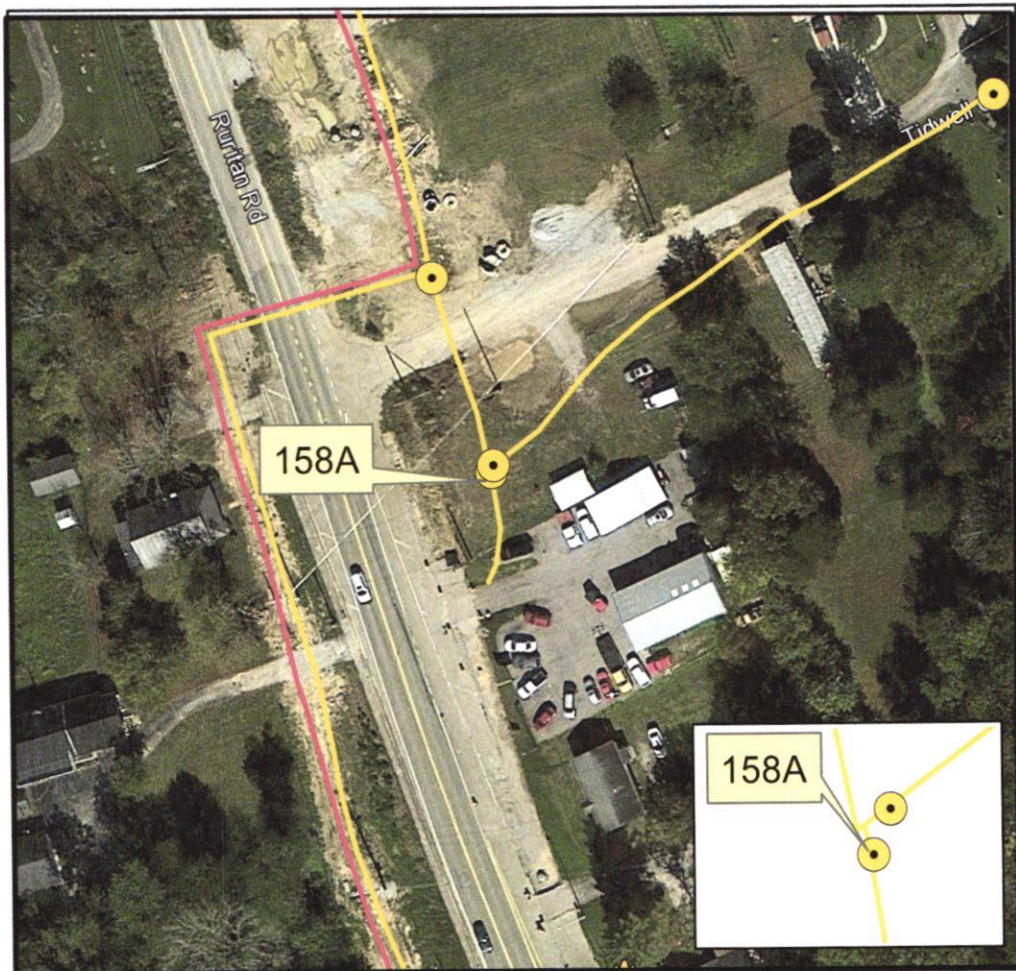
MDPE



HDPE



N



GAS VALVE STREET LOCATION

Top of Hill at Hugh Russell Motors

GAS VALVE INSPECTION

DATE	SIZE	TYPE	OPERATIONAL		INSPECTED BY	COMMENTS
			YES	NO		
3-21-17		Poly	✓		T-T. /BL	Big key
9-28-17		Poly	✓		Jimmie Andrew	
7-13-18			✓		T-J. AK	
7-11-19			✓		T-J CW	
9-29-20			✓		T-J Tyler	
12-7-21			✓		T-J RE	

HARRIMAN UTILITY BOARD, HARRIMAN, TENNESSEE

GAS VALVE INSPECTION	
----------------------	--

[illegible]

HARRIMAN UTILITY BOARD, HARRIMAN, TENNESSEE