

An aerial photograph of a road intersection. A vertical road on the left is labeled 'Berkshire Ln'. A horizontal road crossing it is labeled '147' and 'Swan Pond Circle Rd'. A red dot is placed at the intersection of the two roads. The surrounding area includes a body of water at the bottom and some vegetation along the roads.HARRIMAN UTILITY BOARD, HARRIMAN, TENNESSEE

GAS VALVE INSPECTION

[illegible]

HARRIMAN UTILITY BOARD, HARRIMAN, TENNESSEE

GAS VALVE NUMBER/S

187

MAP INDEX NUMBER

37B

MAP INDEX QUADRANT

SE

TN St. Plane Coords, NAD 83:
E-2,408,993', N-579,844'
(sub-meter accuracy only)

Legend

• VALVE

GAS LINE
DIAMETER

— 1

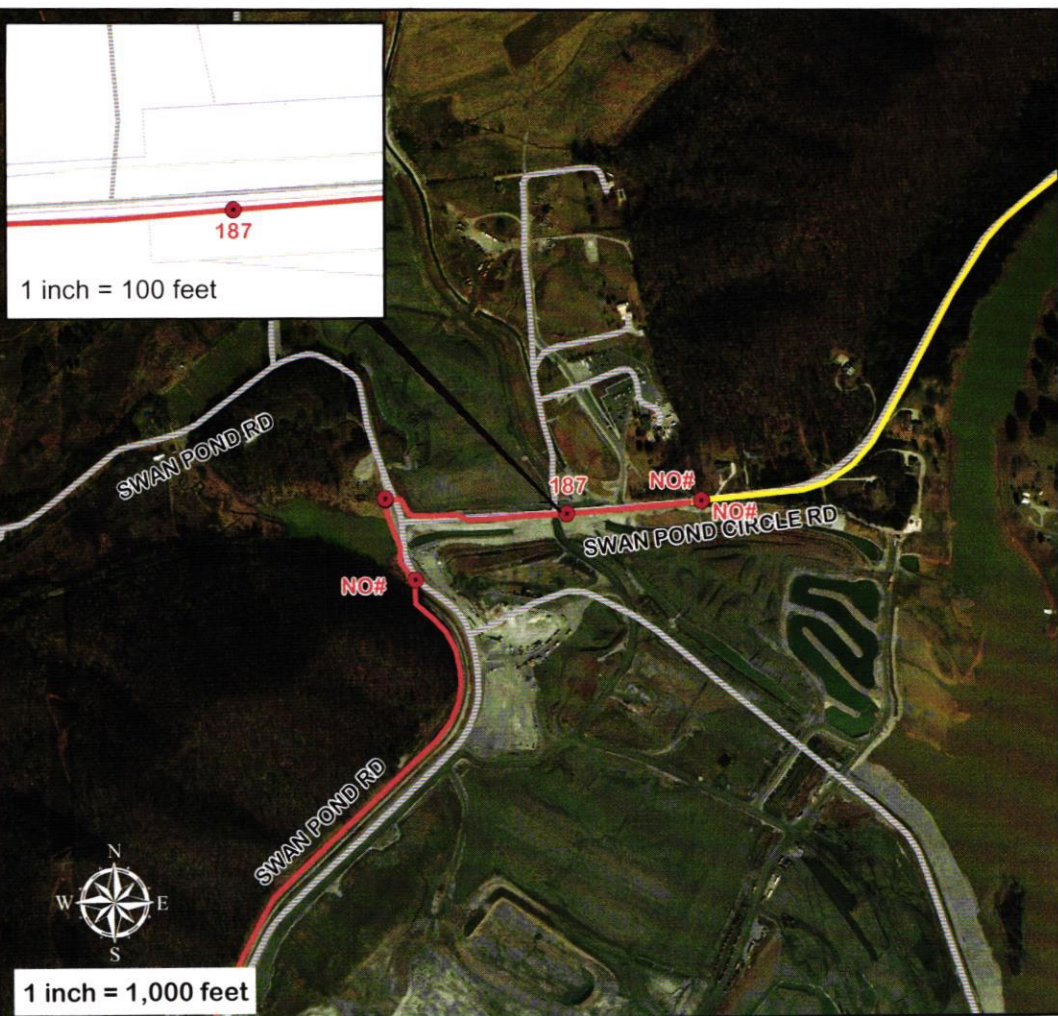
— 2

— 3

— 4

— 6

— 8



GAS VALVE STREET LOCATION

Right Side On Swan Pond Cir. On Bridge.

GAS VALVE INSPECTION

DATE	SIZE	TYPE	OPERATIONAL		INSPECTED BY	COMMENTS
			YES	NO		
8-3-17		Poly	✓		TJ. AH	
7-17-18			✓		TJ SS	
7-15-19			✓		TS BO	
7-30-20		Poly	✓		AS CW	Big Key
8-7-21		Poly	✓		W JP	Big Key

GAS VALVE INSPECTION

[illegible]

HARRIMAN UTILITY BOARD, HARRIMAN, TENNESSEE