

THE INFORMATION ON THIS DRAWING IS BASED SOLELY ON DRAWINGS PROVIDED BY THE WATKINS GROUP AND THE WEST VIRGINIA DIVISION OF HIGHWAYS. NO SITE SURVEY WAS CONDUCTED BY DSATLANTIC CORPORATION.

PARKING REQUIREMENTS

FOOD LION: (5 SPACES/1000 S.F.) = 145 REQUIRED SPACES

TOTAL PROVIDED: = 150 SPACES

DSAtlantic

CHARLOTTE, NC ♦ FORT MYERS, FL
RALEIGH, NC ♦ WINSTON-SALEM, NC
7020 NORTH POINT BLVD., SUITE 200
WINSTON-SALEM, NC 27106

© DSAtlantic Corporation, 1994 (all rights reserved)
Permit is granted herein DSAtlantic Corporation ("DSAtlantic") and the party for which these documents have been prepared, these documents and all other plans, specifications and other information contained herein are to be used solely for the purpose of obtaining and may be used only in connection with the project for which these documents have been prepared by DSAtlantic and for no other purpose. Any unauthorized use of these documents for any purpose other than that for which they were prepared, without liability to DSAtlantic, is determined by DSAtlantic in its sole discretion. All rights of design and invention are reserved to DSAtlantic.

**REFERENCE
DRAWING**

DO NOT USE FOR
CONSTRUCTION

THE WATKINS GROUP
SITE DEVELOPMENT
TN#61 (U.S. 27) AT TN#29
HARRIMAN, TENN.

SITE PLAN

ISSUE SEQUENCE		
NO.	DATE	DESCRIPTION
▲ 9/09/96		FOR APPROVAL
▲ 12/19/96		FOR APPROVAL

PROJECT NO.: TW6001.000
DESIGNED BY: J.V.B.
DRAWN BY: S.E.D.
DATE: 9/09/96

C-1

CADD # HARRIMAN

NORTH

TN #29

PROPOSED
SIGNAL LIGHT

EXISTING
SIGNAL LIGHT

FOOD LION
MODEL: 29-97 DB

AUTOZONE

ROANE AVE. U.S. 27
TN #61

STATE ST.

RUSSLE ST.

1 SITE PLAN
C-1 SCALE: 1" = 30'-0"

SCALE
0 15 30 60 90 120

THE INFORMATION ON THIS DRAWING IS BASED SOLELY ON DRAWINGS PROVIDED BY THE WATKINS GROUP AND THE WEST VIRGINIA DIVISION OF HIGHWAYS. NO SITE SURVEY WAS CONDUCTED BY DSATLANTIC CORPORATION.

PARKING REQUIREMENTS

FOOD LION: (5 SPACES/1000 S.F.) = 145 REQUIRED SPACES
TOTAL PROVIDED: = 150 SPACES

DSAtlantic
CHARLOTTE, NC ♦ FORT MYERS, FL
RALEIGH, NC ♦ WINSTON-SALEM, NC
7820 NORTH POINT BLVD., SUITE 200
WINSTON-SALEM, NC 27106

© DSAtlantic Corporation, 1994 (all rights reserved).
No part of this drawing may be reproduced, stored in a retrieval system, or transmitted in any form or by any means, electronic, mechanical, photocopying, recording, or by any information storage and retrieval system, without the prior written permission of DSAtlantic Corporation. This drawing is the property of DSAtlantic Corporation and is loaned to the client for the project only. It is not to be used for any other purpose. Any unauthorized use of this drawing for any purpose shall be at the user's sole risk, without liability to DSAtlantic, and subject to reasonable compensation by the user to DSAtlantic, as determined by DSAtlantic in its sole discretion. All rights of design and invention are reserved to DSAtlantic.

REFERENCE
DRAWING

DO NOT USE FOR
CONSTRUCTION

THE WATKINS GROUP
SITE DEVELOPMENT
TN#61 (U.S. 27) AT TN#29
HARRIMAN, TENN.

SITE PLAN

ISSUE SEQUENCE		
NO.	DATE	DESCRIPTION
1	9/09/96	FOR APPROVAL
2	12/16/96	FOR APPROVAL

PROJECT NO.: TWG001.000
DESIGNED BY: J.V.B.
DRAWN BY: S.E.D.
DATE: 9/09/96

C-1

OF

CADD # HARRIMAN

EXISTING
SIGNAL LIGHT

PROPOSED
SIGNAL LIGHT

TN #29

CALAPRO
0,0

FOOD LION
MODEL: 29-97 DB

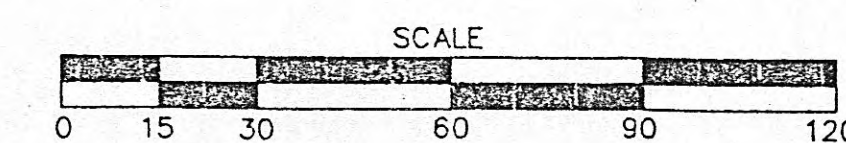
AUTOZONE

ROANE AVE.
U.S. 27
TN #61

STATE ST.

RUSSELE ST.

1 SITE PLAN
C-1 SCALE: 1" = 30'-0"



10.00
440.00
0.00
V

-A-

260.00
440.00
0.00
V

U.S. 27 N

3.0	4.4	6.2	6.6	6.2	4.3	2.9	1.9
1.9	2.6	3.9	5.4	7.9	7.9	7.8	5.3
3.7	2.4						
1.9	2.1	2.5	3.4	4.6	6.9	9.9	9.5
6.6	4.4	3.1					
2.2	2.2	2.4	2.9	3.6	4.8	8.8	8.3
8.6	7.3	4.4	3.3				
2.5	2.6	2.6	2.8	3.1	3.6	5.1	7.6
7.6	6.8	7.4	7.2	4.6	3.2		
2.7	2.9	3.0	3.1	3.0	3.3	3.8	5.0
6.5	6.4	5.8	6.1	6.0	4.5	3.3	
3.3	3.2	3.5	3.8	3.4	3.1	3.2	3.4
3.8	4.8	5.5	5.4	5.1	5.0	4.3	3.4
4.0	3.9	3.8	4.2	4.6	3.8	3.4	3.3
4.6	3.4	3.3	3.4	3.9	4.6	5.2	5.1
4.8	4.7	4.6	4.2	4.6	4.7	4.6	4.2
3.6							
4.0	4.6	4.5	4.4	4.8	5.3	5.1	4.4
3.8	3.8	3.8	3.9	4.0	4.6	5.1	5.0
4.7	4.5	4.7	4.8	5.0	5.4	5.8	5.7
5.6	5.5	5.4	5.2	5.0			
3.4	4.7	5.7	6.2	6.4	6.6	6.5	6.0
5.1	4.8	4.7	4.8	5.0	5.4	5.8	5.7
5.6	5.5	5.4	5.2	5.0			

a

3.8	5.0	6.7	7.5	7.7	8.0	7.6	6.4	5.7	5.4	5.0b	5.9	6.0	6.8	7.2	7.2	7.1	7.0	6.9	6.7	6.4
3.0	3.9	5.0	6.6	7.7	7.8	8.1	7.6	6.4	5.8	5.6	5.9	6.3	7.4	8.7	8.9	8.7	8.5	8.5	8.0	7.6
2.3	3.0	3.8	5.0	6.3	7.6	8.0	8.1	7.3	6.4	5.7	5.4	5.4	5.7	6.1	7.7	9.3	9.7	9.8	9.7	9.3
2.4	3.1	4.0	5.1	6.5	7.8	8.1	8.2	7.4	6.5	5.9	5.5	5.4	5.7	6.0	7.8	9.4	9.9	10.3	10.1	10.0
2.8	3.5	4.4	5.5	7.0	8.3	8.5	8.7	8.0	6.9	6.3	6.0	6.0	6.3	6.7	8.2	9.9	10.4	10.6	10.3	10.4
3.3	4.1	5.0	6.1	7.8	8.8	9.0	9.3	8.8	7.6	7.0	6.7	6.7	7.1	7.5	8.4	9.5	10.1	9.9	9.5	9.6
3.8	4.4	5.3	6.6	8.2	9.2	9.5	9.7	9.2	8.1	7.2	6.9	7.2	7.4	7.4	8.1	8.7	9.3	9.3	9.0	8.6
3.4	4.0	4.5	5.3	6.7	7.7	8.2	8.4	8.6	8.5	8.0	7.1	6.7	6.7	6.7	7.0	7.8	8.2	7.9	7.5	7.5
3.7	4.2	4.5	5.5	6.7	7.5	7.4	7.3	7.8	8.2	7.9	6.9	6.3	6.4	6.3	6.1	6.5	7.0	7.1	6.5	6.0
3.3	4.7	5.1	5.8	7.1	7.7	7.8	7.3	7.8	8.3	8.1	7.0	6.5	6.4	6.4	6.3	6.2	6.6	6.1	5.5	5.1
3.3	4.7	5.1	5.8	7.1	7.7	7.8	7.3	7.8	8.3	8.1	7.0	6.5	6.4	6.4	6.3	6.2	6.6	6.1	5.5	5.1
3.3	4.7	5.1	5.8	7.1	7.7	7.8	7.3	7.8	8.3	8.1	7.0	6.5	6.4	6.4	6.3	6.2	6.6	6.1	5.5	5.1
3.3	4.7	5.1	5.8	7.1	7.7	7.8	7.3	7.8	8.3	8.1	7.0	6.5	6.4	6.4	6.3	6.2	6.6	6.1	5.5	5.1
3.3	4.7	5.1	5.8	7.1	7.7	7.8	7.3	7.8	8.3	8.1	7.0	6.5	6.4	6.4	6.3	6.2	6.6	6.1	5.5	5.1
3.3	4.7	5.1	5.8	7.1	7.7	7.8	7.3	7.8	8.3	8.1	7.0	6.5	6.4	6.4	6.3	6.2	6.6	6.1	5.5	5.1
3.3	4.7	5.1	5.8	7.1	7.7	7.8	7.3	7.8	8.3	8.1	7.0	6.5	6.4	6.4	6.3	6.2	6.6	6.1	5.5	5.1
3.3	4.7	5.1	5.8	7.1	7.7	7.8	7.3	7.8	8.3	8.1	7.0	6.5	6.4	6.4	6.3	6.2	6.6	6.1	5.5	5.1
3.3	4.7	5.1	5.8	7.1	7.7	7.8	7.3	7.8	8.3	8.1	7.0	6.5	6.4	6.4	6.3	6.2	6.6	6.1	5.5	5.1
3.3	4.7	5.1	5.8	7.1	7.7	7.8	7.3	7.8	8.3	8.1	7.0	6.5	6.4	6.4	6.3	6.2	6.6	6.1	5.5	5.1
3.3	4.7	5.1	5.8	7.1	7.7	7.8	7.3	7.8	8.3	8.1	7.0	6.5	6.4	6.4	6.3	6.2	6.6	6.1	5.5	5.1
3.3	4.7	5.1	5.8	7.1	7.7	7.8	7.3	7.8	8.3	8.1	7.0	6.5	6.4	6.4	6.3	6.2	6.6	6.1	5.5	5.1
3.3	4.7	5.1	5.8	7.1	7.7	7.8	7.3	7.8	8.3	8.1	7.0	6.5	6.4	6.4	6.3	6.2	6.6	6.1	5.5	5.1
3.3	4.7	5.1	5.8	7.1	7.7	7.8	7.3	7.8	8.3	8.1	7.0	6.5	6.4	6.4	6.3	6.2	6.6	6.1	5.5	5.1
3.3	4.7	5.1	5.8	7.1	7.7	7.8	7.3	7.8	8.3	8.1	7.0	6.5	6.4	6.4	6.3	6.2	6.6	6.1	5.5	5.1
3.3	4.7	5.1	5.8	7.1	7.7	7.8	7.3	7.8	8.3	8.1	7.0	6.5	6.4	6.4	6.3	6.2	6.6	6.1	5.5	5.1
3.3	4.7	5.1	5.8	7.1	7.7	7.8	7.3	7.8	8.3	8.1	7.0	6.5	6.4	6.4	6.3	6.2	6.6	6.1	5.5	5.1
3.3	4.7	5.1	5.8	7.1	7.7	7.8	7.3	7.8	8.3	8.1	7.0	6.5	6.4	6.4	6.3	6.2	6.6	6.1	5.5	5.1
3.3	4.7	5.1	5.8	7.1	7.7	7.8	7.3	7.8	8.3	8.1	7.0	6.5	6.4	6.4	6.3	6.2	6.6	6.1	5.5	5.1
3.3	4.7	5.1	5.8	7.1	7.7	7.8	7.3	7.8	8.3	8.1	7.0	6.5	6.4	6.4	6.3	6.2	6.6	6.1	5.5	5.1
3.3	4.7	5.1	5.8	7.1	7.7	7.8	7.3	7.8	8.3	8.1	7.0	6.5	6.4	6.4	6.3	6.2	6.6	6.1	5.5	5.1
3.3	4.7	5.1	5.8	7.1	7.7	7.8	7.3	7.8	8.3	8.1	7.0	6.5	6.4	6.4	6.3	6.2	6.6	6.1	5.5	5.1
3.3	4.7	5.1	5.8	7.1	7.7	7.8	7.3	7.8	8.3	8.1	7.0	6.5	6.4	6.4	6.3	6.2	6.6	6.1	5.5	5.1
3.3	4.7	5.1	5.8	7.1	7.7	7.8	7.3	7.8	8.3	8.1	7.0	6.5	6.4	6.4	6.3	6.2	6.6	6.1	5.5	5.1
3.3	4.7	5.1	5.8	7.1	7.7	7.8	7.3	7.8	8.3	8.1	7.0	6.5	6.4	6.4	6.3	6.2	6.6	6.1	5.5	5.1
3.3	4.7	5.1	5.8	7.1	7.7	7.8	7.3	7.8	8.3	8.1	7.0	6.5	6.4	6.4	6.3	6.2	6.6	6.1	5.5	5.1
3.3	4.7	5.1	5.8	7.1	7.7	7.8	7.3	7.8	8.3	8.1	7.0	6.5	6.4	6.4	6.3	6.2	6.6	6.1	5.5	5.1
3.3	4.7	5.1	5.8	7.1	7.7	7.8	7.3	7.8	8.3	8.1	7.0	6.5	6.4	6.4	6.3	6.2	6.6	6.1	5.5	5.1
3.3	4.7	5.1	5.8	7.1	7.7	7.8	7.3	7.8	8.3	8.1	7.0	6.5	6.4	6.4	6.3	6.2	6.6	6.1	5.5	5.1
3.3	4.7	5.1	5.8	7.1	7.7	7.8	7.3	7.8	8.3	8.1	7.0	6.5	6.4	6.4	6.3	6.2	6.6	6.1	5.5	5.1
3.3	4.7	5.1	5.8	7.1	7.7	7.8	7.3	7.8	8.3	8.1	7.0	6.5	6.4	6.4	6.3	6.2	6.6	6.1	5.5	5.1
3.3	4.7	5.1	5.8	7.1	7.7	7.8	7.3	7.8	8.3	8.1	7.0	6.5	6.4	6.4	6.3	6.2	6.6	6.1	5.5	5.1
3.3	4.7	5.1	5.8	7.1	7.7	7.8	7.3	7.8	8.3	8.1	7.0	6.5	6.4	6.4	6.3	6.2	6.6	6.1	5.5	5.1
3.3	4.7	5.1	5.8	7.1	7.7	7.8	7.3	7.8	8.3	8.1	7.0	6.5	6.4	6.4	6.3	6.2	6.6	6.1	5.5	5.1
3.3	4.7	5.1	5.8	7.1	7.7	7.8	7.3	7.8	8.3	8.1	7.0	6.5	6.4	6.4	6.3	6.2	6.6	6.1	5.5	5.1
3.3	4.7	5.1	5.8	7.1	7.7	7.8	7.3	7.8	8.3	8.1	7.0	6.5	6.4	6.4	6.3	6.2	6.6	6.1	5.5	5.1
3.3	4.7	5.1	5.8	7.1	7.7	7.8	7.3	7.8	8.3	8.1	7.0	6.5	6.4	6.4	6.3	6.2	6.6	6.1	5.5	5.1
3.3	4.7	5.1	5.8	7.1	7.7	7.8	7.3	7.8	8.3	8.1	7.0	6.5	6.4	6.4	6.3	6.2	6.6	6.1	5.5	5.1
3.3	4.7	5.1	5.8	7.1	7.7	7.8	7.3	7.8	8.3	8.1	7.0	6.5	6.4	6.4	6.3	6.2	6.6	6.1	5.5	5.1
3.3	4.7	5.1	5.8	7.1	7.7	7.8	7.3	7.8	8.3	8.1	7.0	6.5	6.4	6.4	6.3	6.2	6.6	6.1	5.5	5.1
3.3	4.7	5.1	5.8	7.1	7.7	7.8	7.3	7.8	8.3	8.1	7.0	6.5	6.4	6.4	6.3	6.2	6.6	6.1	5.5	5.1
3.3	4.7	5.1	5.8	7.1	7.7	7.8	7.3	7.8	8.3	8.1	7.0	6.5	6.4	6.4	6.3	6.2	6.6	6.1	5.5	5.1
3.3	4.7	5.1	5.8	7.1	7.7	7.8	7.3	7.8	8.3	8.1	7.0	6.5	6.4	6.4	6.3	6.2	6.6	6.1	5.5	5.1
3.3	4.7	5.1	5.8	7.1	7.7	7.8	7.3	7.8	8.3	8.1	7.0	6.5	6.4	6.4	6.3	6.2	6.6	6.1	5.5	5.1
3.3	4.7	5.1	5.8	7.1	7.7	7.8	7.3	7.8	8.3	8.1	7.0	6.5	6.4	6.4	6.3	6.2	6.6	6.1	5.5	5.1
3.3	4.7	5.1	5.8	7.1	7.7	7.8	7.3	7.8	8.3	8.1	7.0	6.5	6.4	6.4	6.3	6.2	6.6	6.1	5.5	5.1
3.3	4.7	5.1	5.8	7.1	7.7	7.8	7.3	7.8	8.3	8.1	7.0	6.5	6.4	6.4	6.3	6.2	6.6	6.1	5.5	5.1
3.3	4.7	5.1	5.8	7.1	7.7	7.8	7.3	7.8	8.3	8.1	7.0	6.5	6.4	6.4	6.3	6.2	6.6	6.1	5.5	5.1
3.3	4.7	5.1	5.8	7.1	7.7	7.8	7.3	7.8	8.3	8.1	7.0	6.5	6.4	6.4	6.3	6.2	6.6	6.1	5.5	5.1
3.3	4.7	5.1	5.8	7.1	7.7	7.8	7.3	7.8	8.3	8.1	7.0	6.5	6.4	6.4	6.3	6.2	6.6	6.1	5.5	5.1
3.3	4.7	5.1	5.8	7.1	7.7	7.8	7.3	7.8	8.3	8.1	7.0	6.5	6.4	6.4	6.3	6.2	6.6	6.1	5.5	5.1
3.3	4.7	5.1	5.8	7.1	7.7	7.8	7.3	7.8	8.3	8.1	7.0	6.5	6.4	6.4	6.3	6.2	6.6	6.1	5.5	5.1
3.3	4.7	5.1	5.8	7.1	7.7	7.8	7.3	7.8	8.3	8.1	7.0	6.5	6.4	6.4	6.3	6.2	6.6	6.1	5.5	5.1
3.3	4.7	5.1	5.8	7.1	7.7	7.8	7.3	7.8	8.3	8.1	7.0	6.5	6.4	6.4	6.3	6.2	6.6	6.1	5.5	5.1
3.3	4.7	5.1	5.8	7.1	7.7	7.8	7.3	7.8	8.3	8.1	7.0	6.5	6.4	6.4	6.3	6.2	6.6	6.1	5.5	5.1
3.3	4.7	5.1	5.8	7.1	7.7	7.8	7.3	7.8	8.3	8.1	7.0	6.5	6.4	6.4	6.3	6.2	6.6	6.1	5.5	5.1
3.3	4.7	5.1	5.8	7.1	7.7	7.8	7.3	7.8	8.3	8.1	7.0	6.5	6.4	6.4	6.3	6.2	6.6	6.1	5.5	5.1
3.3	4.7	5.1	5.8	7.1	7.7	7.8	7.3	7.8	8.3	8.1	7.0	6.5	6.4	6.4	6.3	6.2	6.6	6.1	5.5	5.1
3.3	4.7	5.1	5.8	7.1	7.7	7.8	7.3	7.8	8.3	8.1	7.0	6.5	6.4	6.4	6.3	6.2	6.6	6.1	5.5	5.1
3.3	4.7	5.1	5.8	7.1	7.7	7.8	7.3	7.8	8.3	8.1	7.0	6.5	6.4	6.4	6.3	6.2	6.6	6.1	5.5	5.1
3.3	4.7	5.1	5.8	7.1	7.7	7.8	7.3	7.8	8.3	8.1	7.0	6.5	6.4	6.4	6.3	6.2	6.6	6.1	5.5	5.1
3.3	4.7	5.1	5.8	7.1	7.7	7.8	7.3	7.8	8.3	8.1	7.0	6.5	6.4	6.4	6.3	6.2	6.6	6.1	5.5	5.1
3.3	4.7	5.1	5.8	7.1	7.7	7.8	7.3	7.8	8.3	8.1	7.0	6.5	6.4	6.4	6.3	6.2	6.6	6.1	5.5	

d

4.3	5.8	6.8	7.4	7.8	8.1	8.2	7.8	7.3	7.7	8.3	8.2	7.6	7.0	6.7	6.0	5.0	3.7
4.2	5.5	6.3	6.7	7.1	7.7	7.9	7.4	7.3	7.7	8.3	7.6	6.6	6.0	5.9	4.8	3.6	
5.5	6.0	6.6	7.3	8.1	8.1	8.0	7.9	8.4	8.4	7.4	6.4	5.8	5.7	5.6	5.0	3.7	
5.1	5.7	6.4	7.2	8.3	8.5	8.4	8.5	8.7	8.0	7.2	6.2	5.8	5.7	5.5	5.0	3.9	
5.0	5.6	6.1	7.0	8.1	8.9	8.8	9.1	8.6	7.8	7.0	6.3	6.0	5.8	5.6	5.0	4.2	
5.2	5.8	6.1	7.0	8.3	9.2	9.2	9.5	8.8	7.9	7.2	6.8	6.6	6.3	6.1	5.3	4.4	
5.4	6.0	6.6	7.5	8.2	8.8	9.4	9.0	8.7	8.6	8.0	7.5	7.4	7.1	6.4	5.5	4.7	
4.5	5.6	6.7	7.6	8.2	8.7	8.3	8.2	9.2	8.9	8.1	7.6	7.5	7.0	6.3	5.7		
3.5	4.8	5.7	6.7	7.4	7.6	7.7	7.7	8.0	8.8	9.0	8.5	8.0	8.3	9.1	8.5	7.8	

FoodLion Building

e

10.00
0.00
0.00

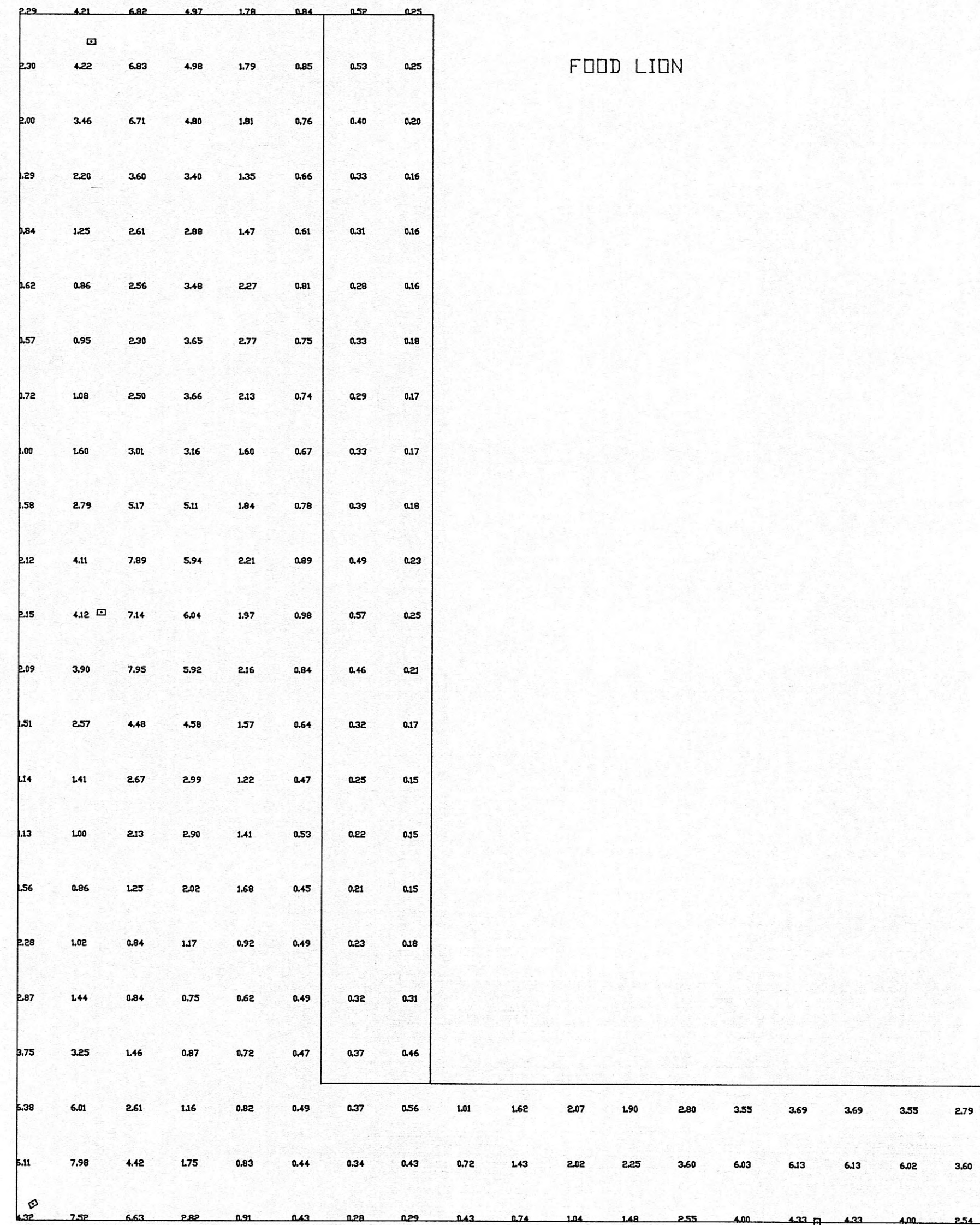
-A-

260.00
0.00
0.00

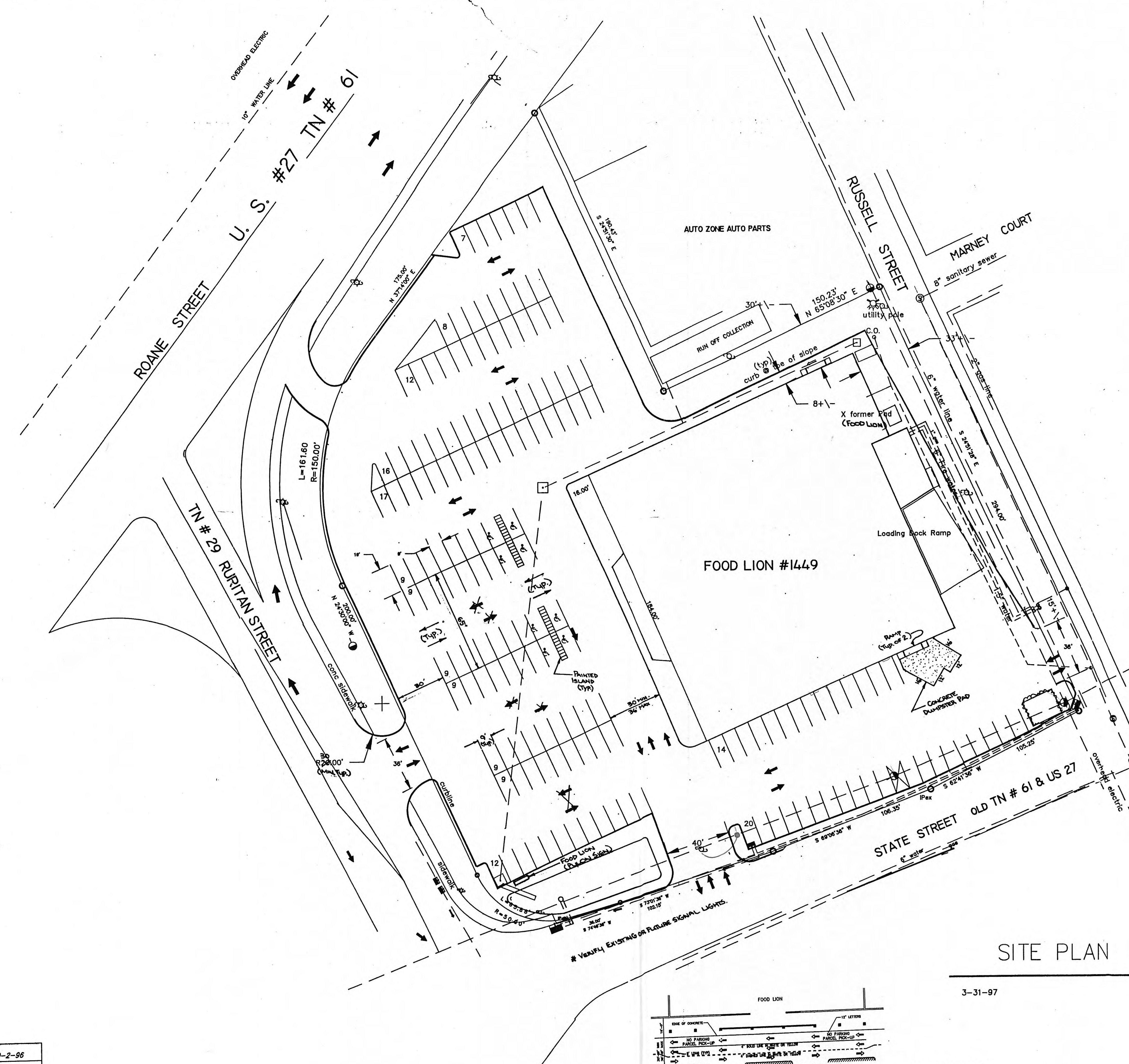
State Street

Russle Street

P=Holophane Corporation
214 Oakwood Avenue
Newark, Ohio 43055
April 2, 1997
Run Number: 4226
Analysis Area Number: 1
Analysis Points: 740
OC spacing (ft): 10.00
Comment: Food Lion, Harriman, TN - Front Parking Area
Statistics (fc):
Average: 6.60
Ave/Min: 3.56
Minimum: 1.86
Max/Min: 5.90
Maximum: 10.94
U.I.: 76
Analysis Area Description:
Output scale (ft/inch): Left to right: 20.00
Top to bottom: 20.00
Orientation: 180
Location of analysis points:
The decimal of the respective number.
L = Luminaire Location
A = Luminaire Aiming Location



- | | |
|---|--------------|
| FOOD LION
STATE STREET SIDE PARKING | |
| HARRIMAN UTILITY BOARD | |
| KNOXVILLE CUSTOMER SERVICE CENTER
TENNESSEE VALLEY AUTHORITY | |
| DESIGNED BY : SEC | NOT TO SCALE |
| DRAWN BY : SEC | DATE : |



PRELIMINARY

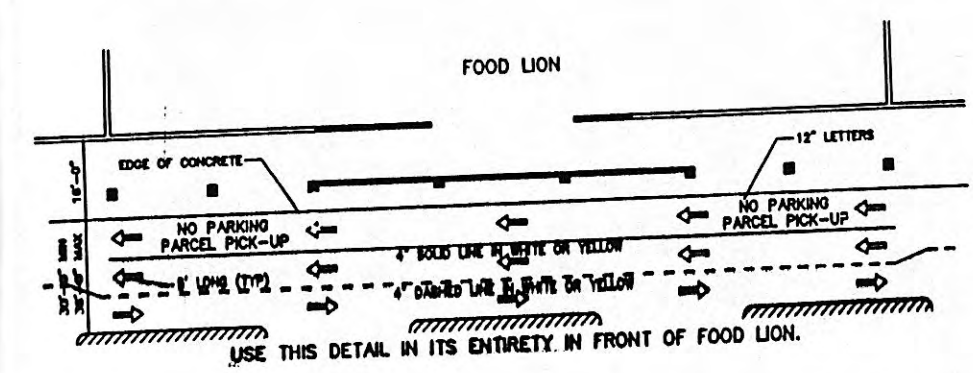
APPROVED
AS NOTED
FOOD LION, INC.
Checked By: [Signature]
Date: 4.8.97

- NOTE:
- PROVIDE A LEGEND FOR CUA & PARKING RATIOS.
 - SHOW COMPLETE METES & BOUNDS.
 - SHOW VICINITY MAP - QUARTER OF MILE RADIUS MIN.

IMPORTANT NOTE:
- RESTRICTED SITE, PARKING SCARCE DIRECTLY IN FRONT OF FOOD LION.
- NO FUTURE EXPANSION THIS SITE.

SITE PLAN #1449

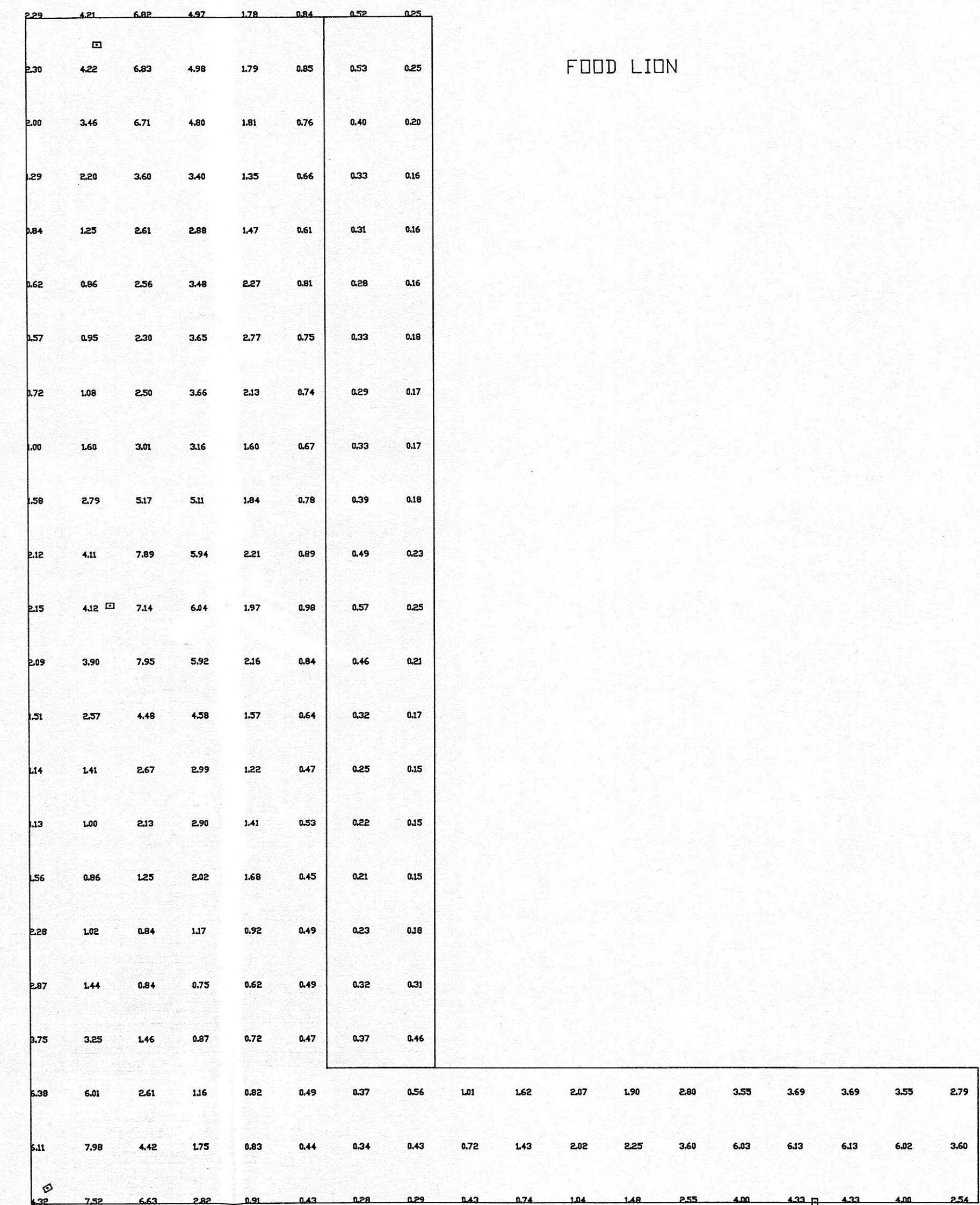
3-31-97



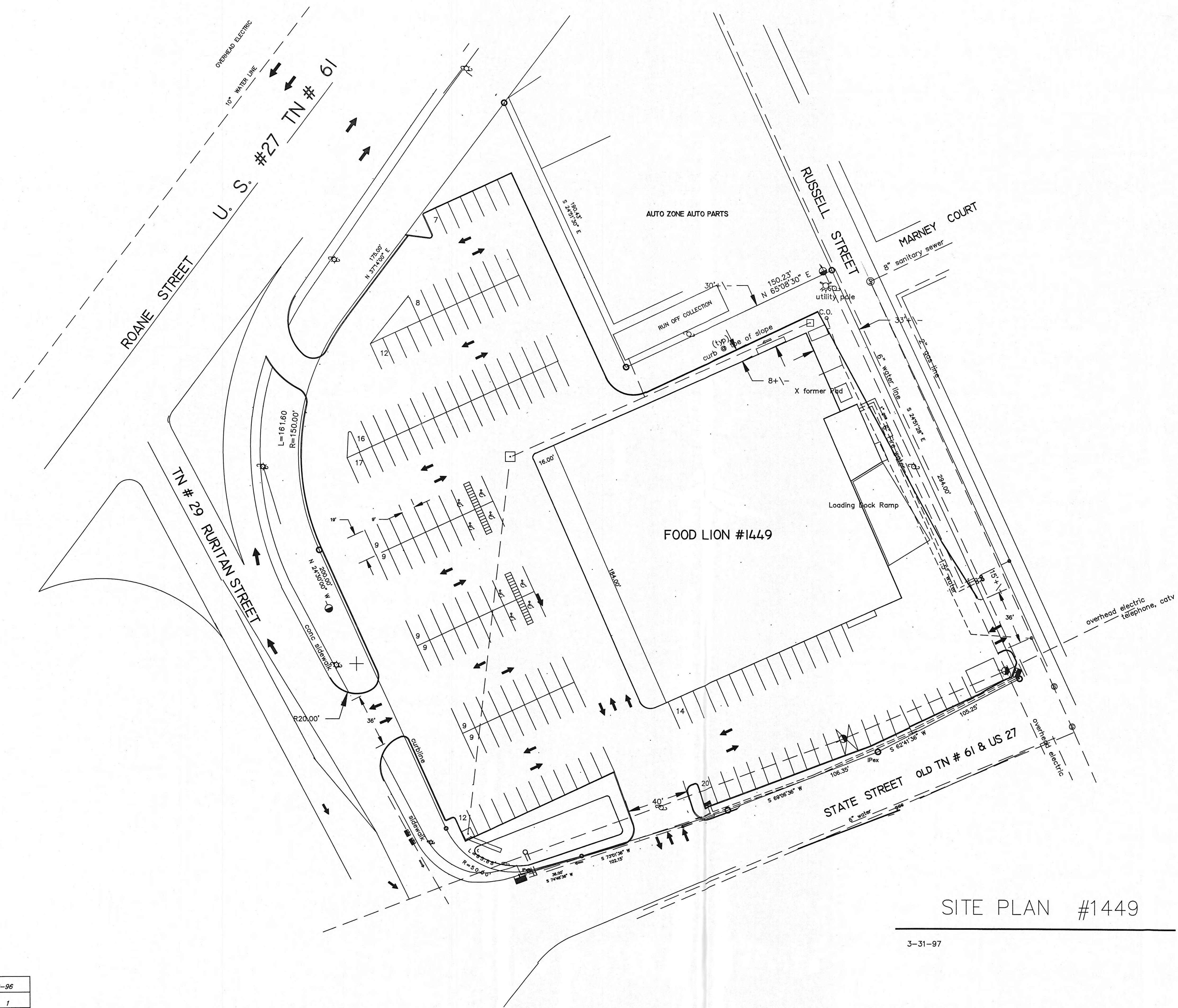
SCALE 1" = 30 FT

DRAWN BY:	RLD	DATE:	10-2-96
CHECKED BY:	RLD	DRAWING NO.:	1
	WATKINS	SHEET	1 OF 1

FOOD LION
MODEL 29-97
U.S. # 27 & TN # 29
SOUTH HARRIMAN COMMUNITY
ROANE STREET, HARRIMAN
1ST CIVIL DISTRICT
ROANE COUNTY TN
1449



- | | |
|---|--------------|
| FOOD LION
STATE STREET SIDE PARKING | |
| HARRIMAN UTILITY BOARD | |
| KNOXVILLE CUSTOMER SERVICE CENTER
TENNESSEE VALLEY AUTHORITY | |
| DESIGNED BY : GEC | NOT TO SCALE |
| DRAWN BY : SEC | DATE : |



SITE PLAN #1449

3-31-97

SCALE 1" = 30 FT

FOOD LION
MODEL 29-97
U.S. # 27 & TN # 29
SOUTH HARRIMAN COMMUNITY
ROANE STREET, HARRIMAN
1ST CIVIL DISTRICT
ROANE COUNTY TN

DRAWN BY:	RLD	DATE:	10-2-96
CHECKED BY:	RLD	DRAWING NO.:	1
JOB NO.:	WATKINS	SHEET	1 OF 1

THE INFORMATION ON THIS DRAWING IS BASED SOLELY ON DRAWINGS PROVIDED BY THE WATKINS GROUP AND THE WEST VIRGINIA DIVISION OF HIGHWAYS. NO SITE SURVEY WAS CONDUCTED BY DSATLANTIC CORPORATION.

PARKING REQUIREMENTS
FOOD LION: (5 SPACES/1000 S.F.) = 145 REQUIRED SPACES
TOTAL PROVIDED: = 150 SPACES

DSAtlantic
CHARLOTTE, NC ♦ FORT MYERS, FL
RALEIGH, NC ♦ WINSTON-SALEM, NC
7620 NORTH POINT BLVD., SUITE 200
WINSTON-SALEM, NC 27106

© DSAtlantic Corporation, 1994 (all rights reserved).
Pursuant to agreement between DSAtlantic Corporation ("DSAtlantic") and the party for which these documents have been prepared, these documents and all data, plans, specifications and other information contained herein are the sole and exclusive property of DSAtlantic. These documents have been prepared by DSAtlantic and for no other purpose. Any unauthorized use of these documents for purposes other than that for which they were prepared is prohibited. DSAtlantic is not responsible for any errors or omissions in these documents, and its liability is limited to the extent of the fee paid for its services. All rights of design and invention are reserved to DSAtlantic.

**REFERENCE
DRAWING**
DO NOT USE FOR
CONSTRUCTION

THE WATKINS GROUP
SITE DEVELOPMENT
TN#61 (U.S. 27) AT TN#29
HARRIMAN, TENN.

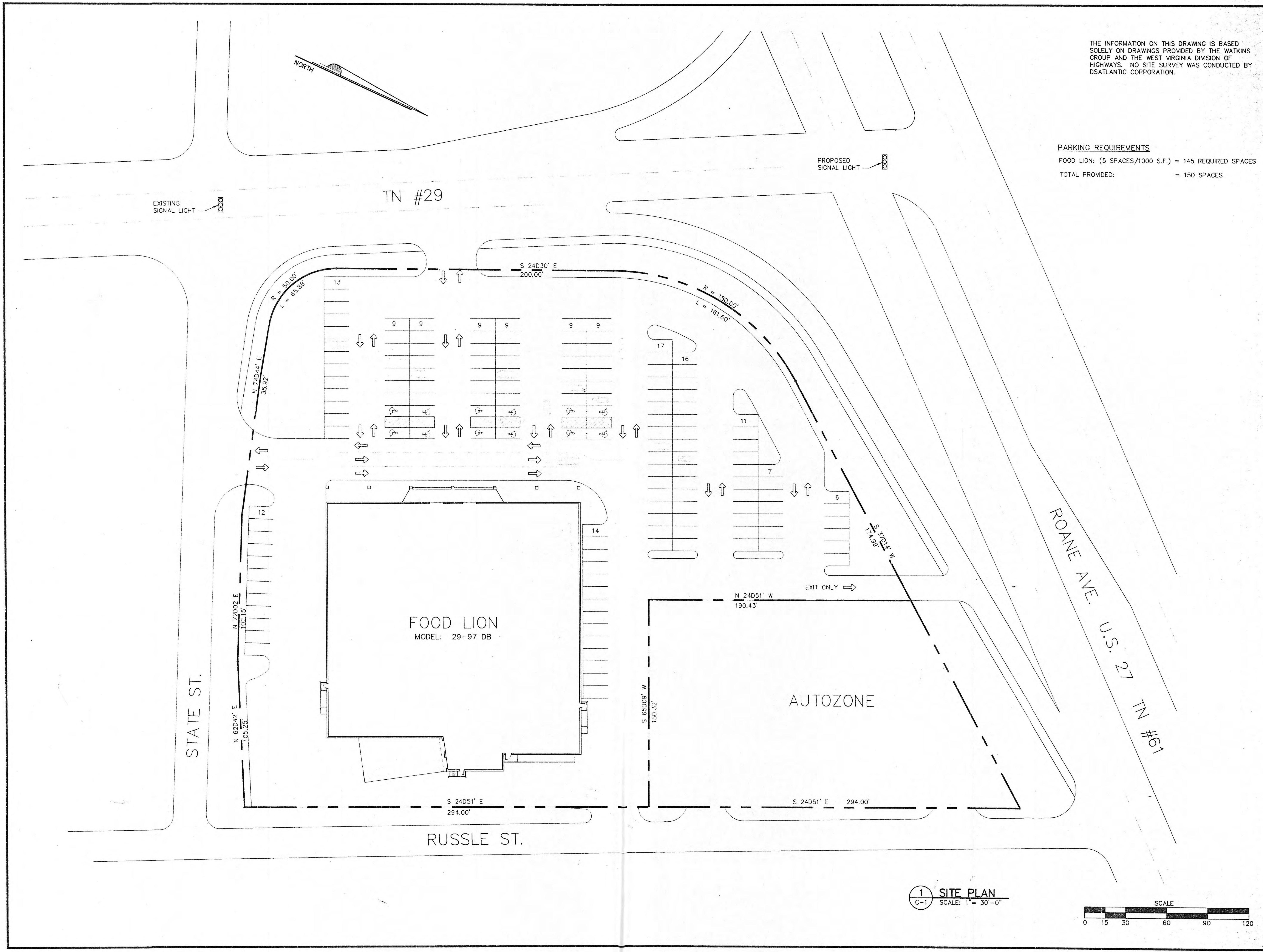
SITE PLAN

ISSUE SEQUENCE		
NO.	DATE	DESCRIPTION
1	9/09/96	FOR APPROVAL
2	12/19/96	FOR APPROVAL

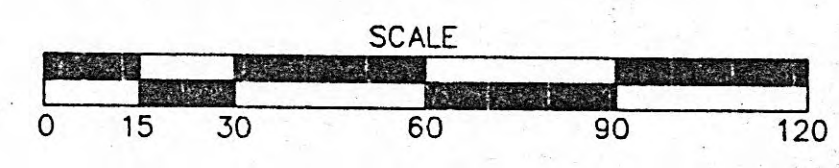
PROJECT NO.: TWG001.000
DESIGNED BY: J.V.B.
DRAWN BY: S.E.D.
DATE: 9/09/96

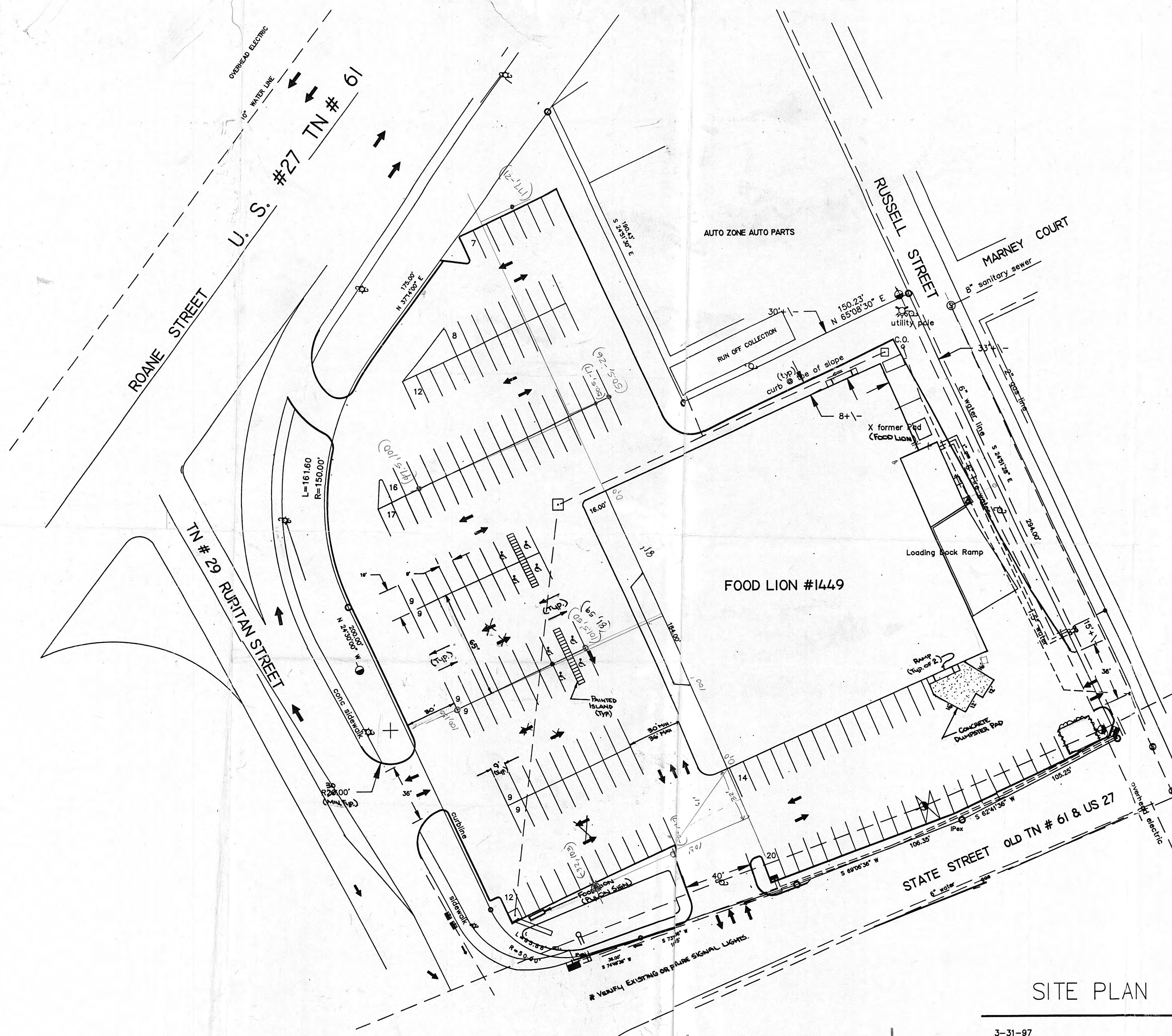
C-1
OF

CADD # HARRIMAN



1 SITE PLAN
C-1 SCALE: 1" = 30'-0"





PRELIMINARY

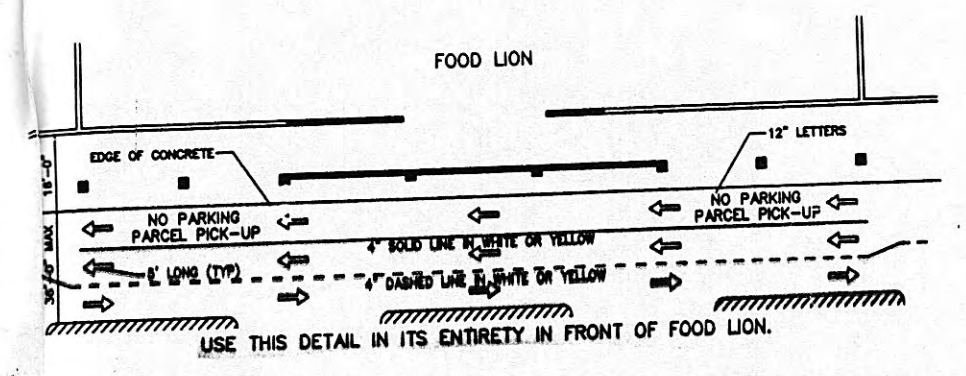
APPROVED
AS NOTED
FOOD LION, INC.
Checked By: [Signature]
Date: 4-8-97

- NOTE:
- PROVIDE A LEGEND FOR GLA & PARKING RATIOS.
 - SHOW COMPLETE METES & BOUNDS.
 - SHOW VICINITY MAP - QUARTER OF A MILE RADIUS MIN.

IMPORTANT NOTE:
- RESTRICTED SITE, PARKING SPACE DIRECTLY IN FRONT OF FOOD LION.
- NO FUTURE EXPANSION THIS SITE.

SITE PLAN #1449

3-31-97



SCALE 1" = 30 FT

FOOD LION
MODEL 29-97
U.S. # 27 & TN # 29
SOUTH HARRIMAN COMMUNITY
ROANE STREET, HARRIMAN
1ST CIVIL DISTRICT
ROANE COUNTY TN
#1449

DRAWN BY:	RLD	DATE:	10-2-96
CHECKED BY:	RLD	DRAWING NO.:	1
DATE:	10-2-96	SHEET:	1 OF 1