



CHECKED & APPROVED
By *[Signature]*
P.E. Asst. Div. Const. Engr.
Date 4-22-70

APPROVED
By *[Signature]*
REG. M.C.E. ENGINEER
Date 7-1-70

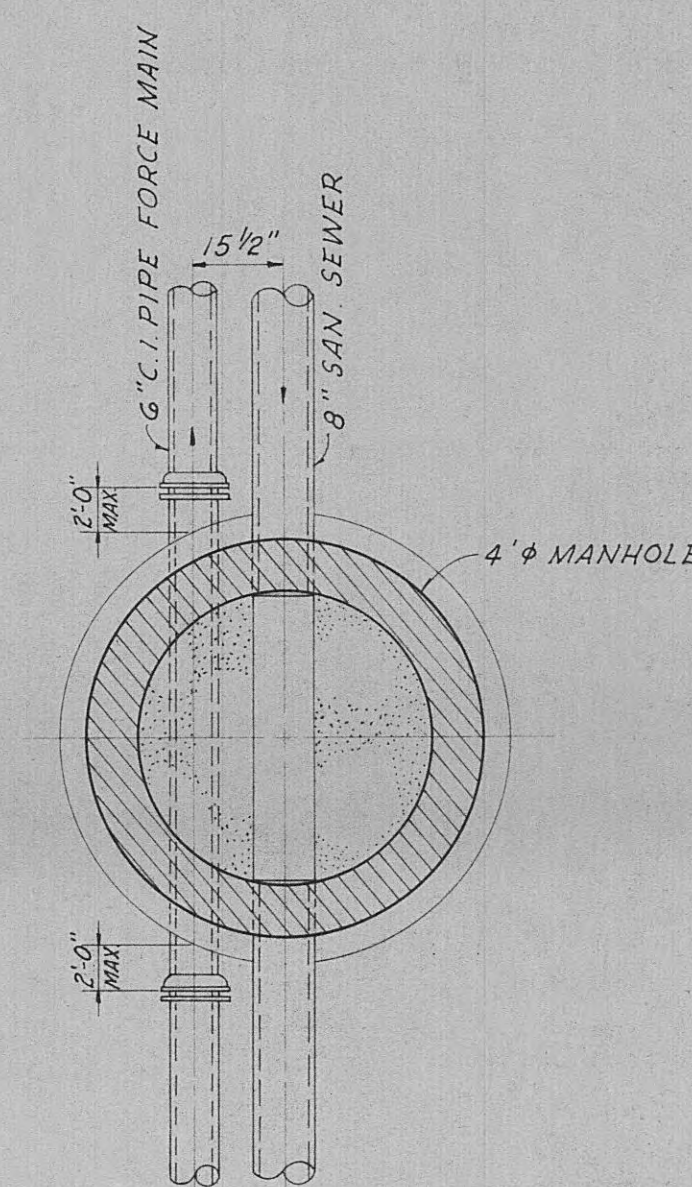
FOR APPROVAL

CITY OF HARRIMAN, TENNESSEE
SEWERAGE SYSTEM IMPROVEMENTS
VOCATIONAL-TECHNICAL SCHOOL AREA

LOCATION MAP

SCALE 1" = 800' DATE APRIL 1, 1970	WIEDEMAN AND SINGLETON ENGINEERS ATLANTA	SHEET 1 OF 5
---	--	-----------------------

NOTE
ALL SEWERS 8" UNLESS OTHERWISE SHOWN.

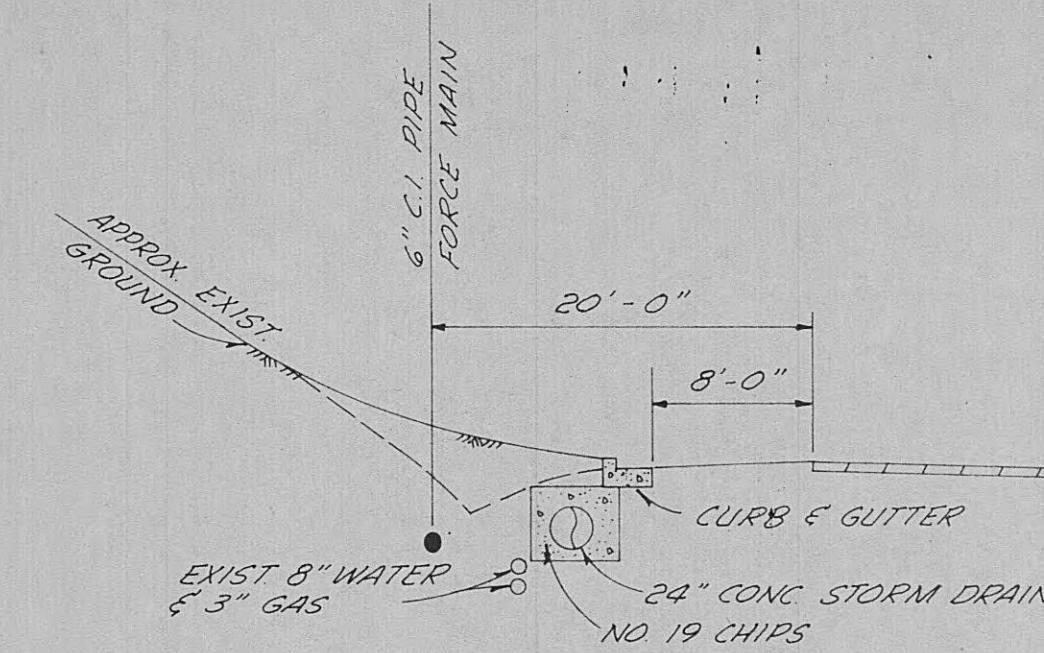
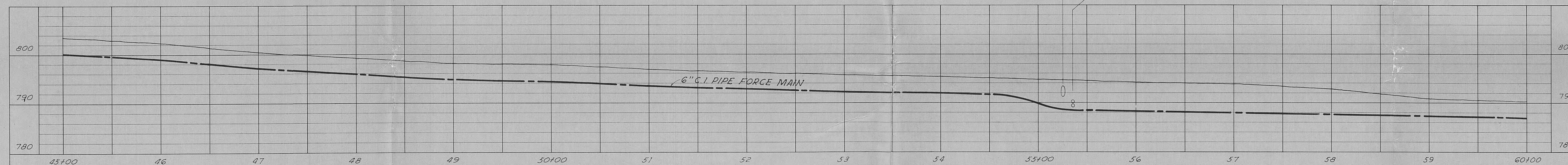
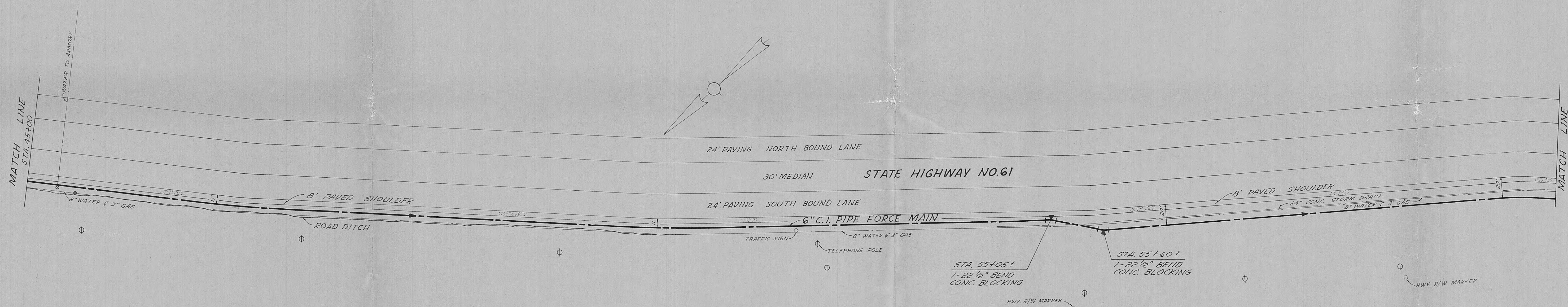
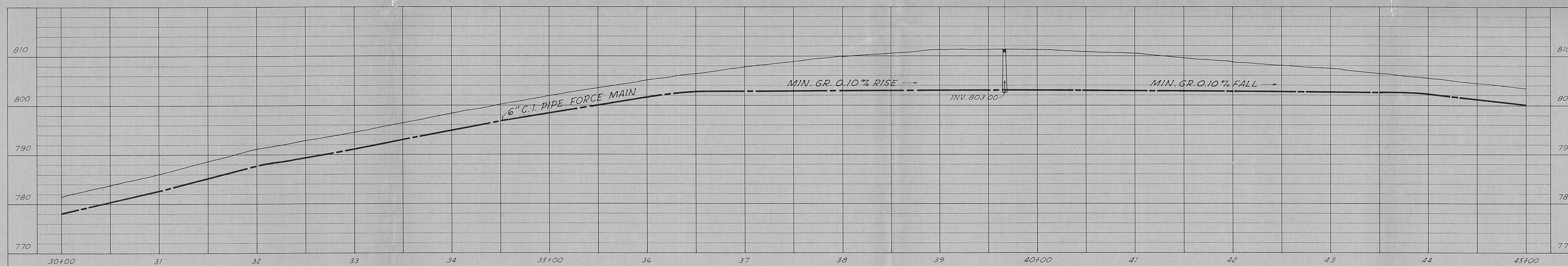
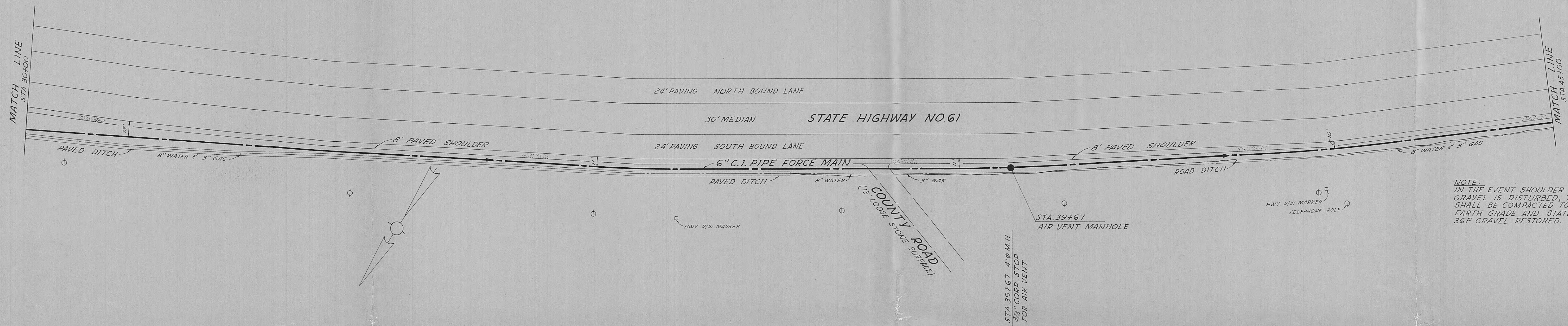


6" C.I. PIPE FORCE MAIN

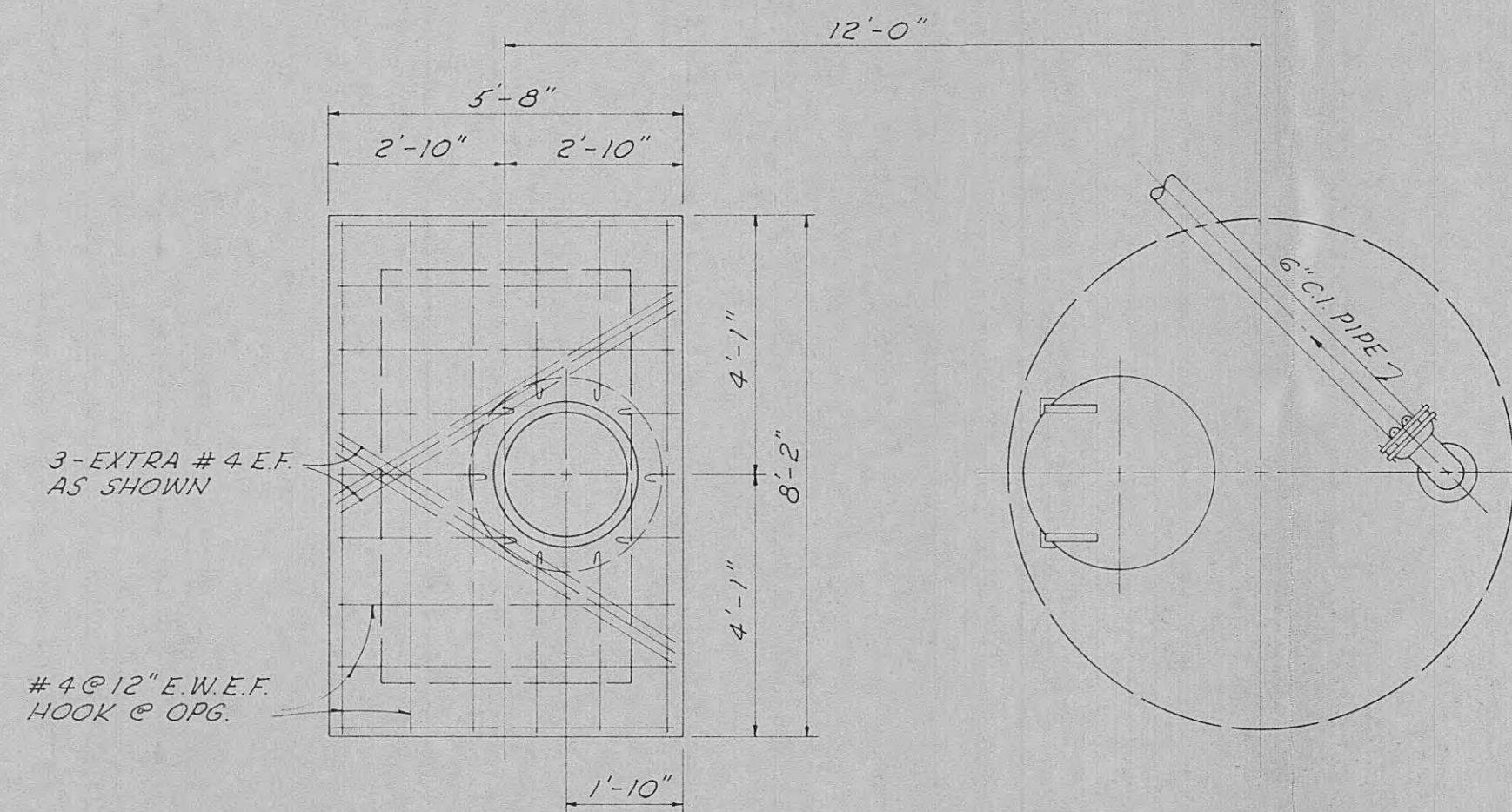
15 1/2"

6" MIN. COMPACTED

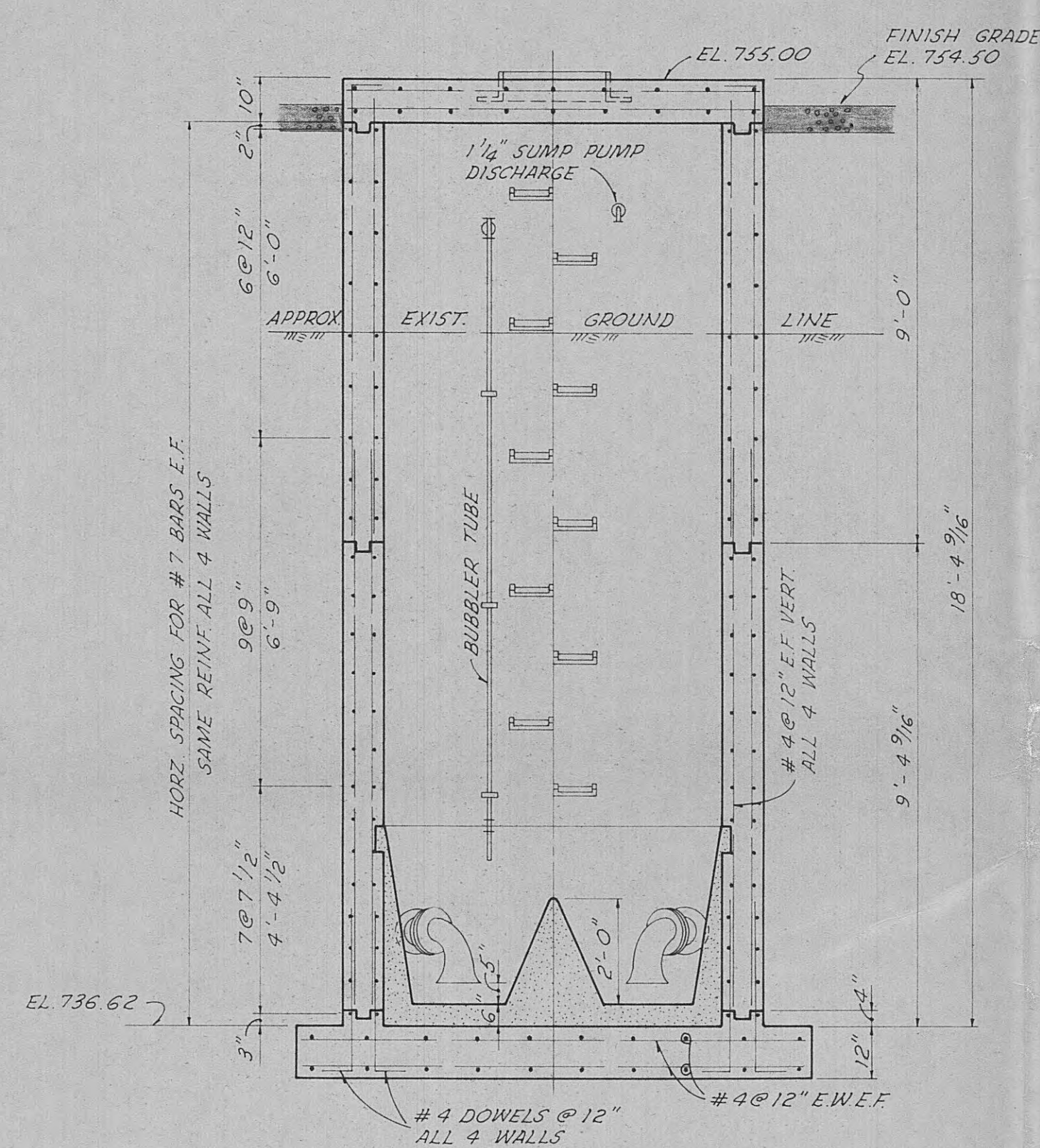
[illegible]



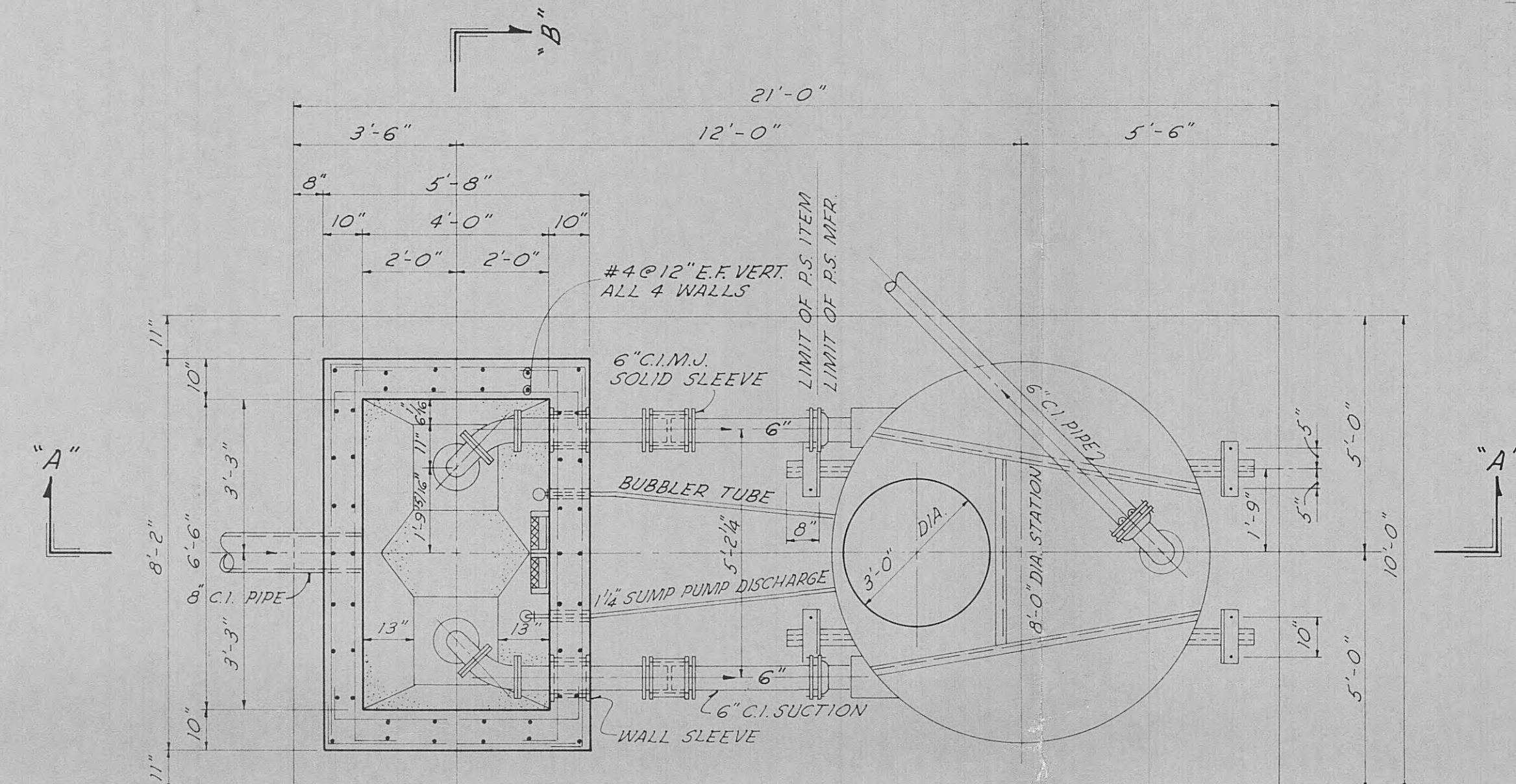
TYPICAL SECTION
STA. 55+00 TO STA. 61+00
SCALE: 1" = 10' - 0"



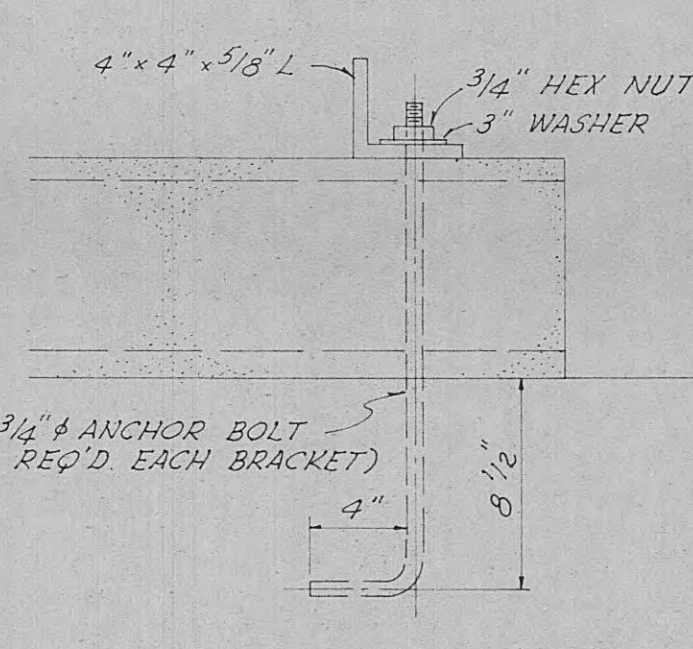
TOP PLAN
SCALE: 3/8"=1'-0"



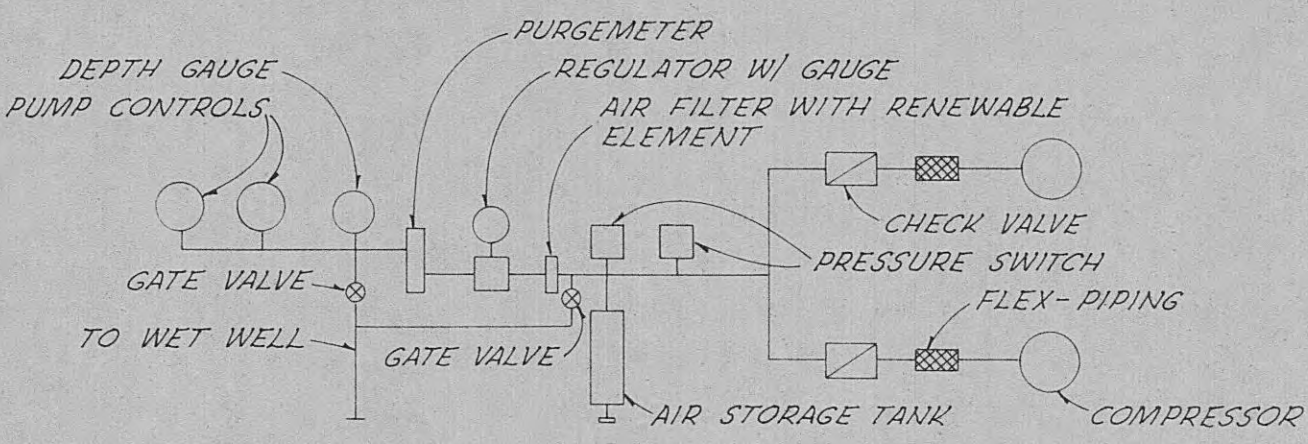
SECTION "B-B"
SCALE: 3/8"=1'-0"



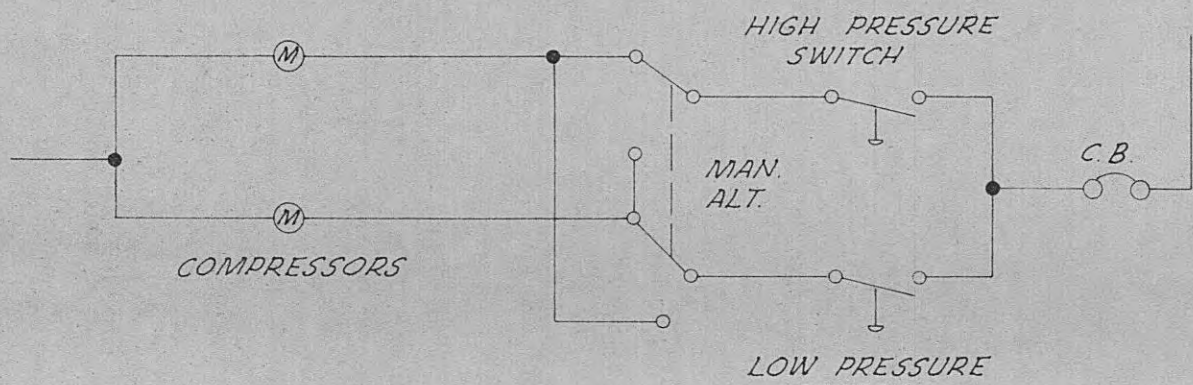
WALL PLAN
SCALE: 3/8"=1'-0"



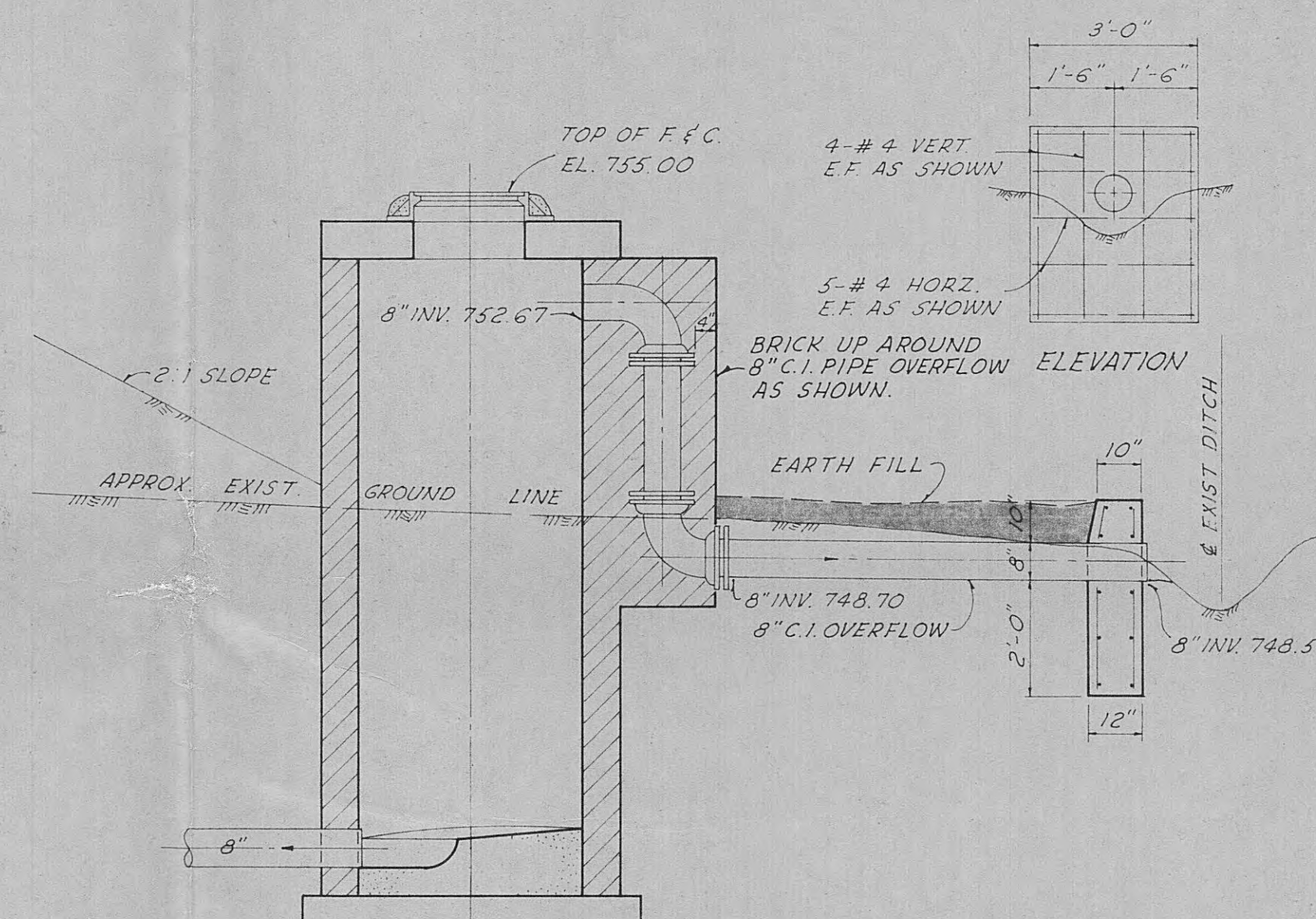
HOLD DOWN BRACKET DETAIL
SCALE: 1/2"=1'-0"



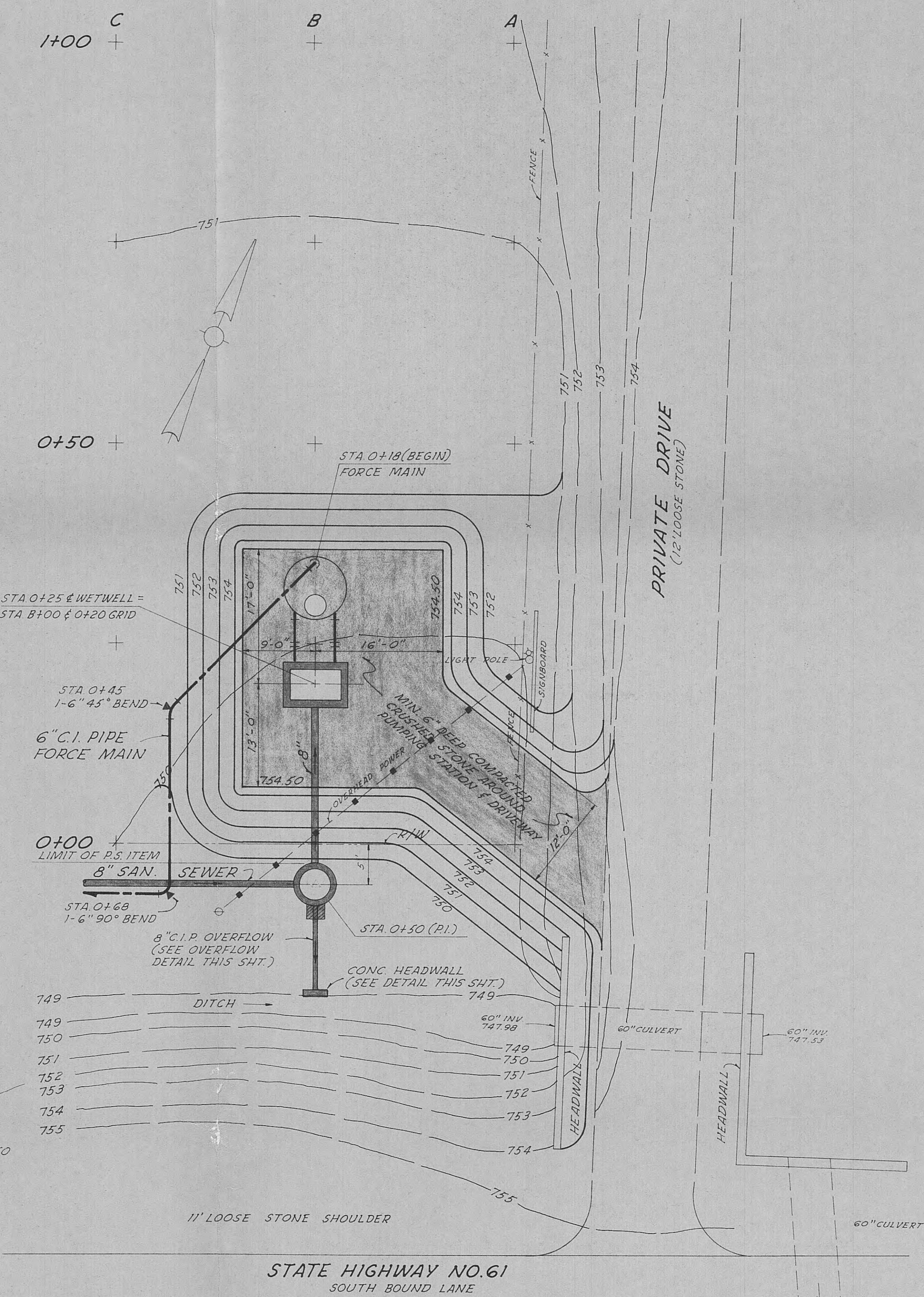
BUBBLER SYSTEM SCHEMATIC
N.T.S.



WIRING SCHEMATIC FOR
AIR COMPRESSORS
N.T.S.

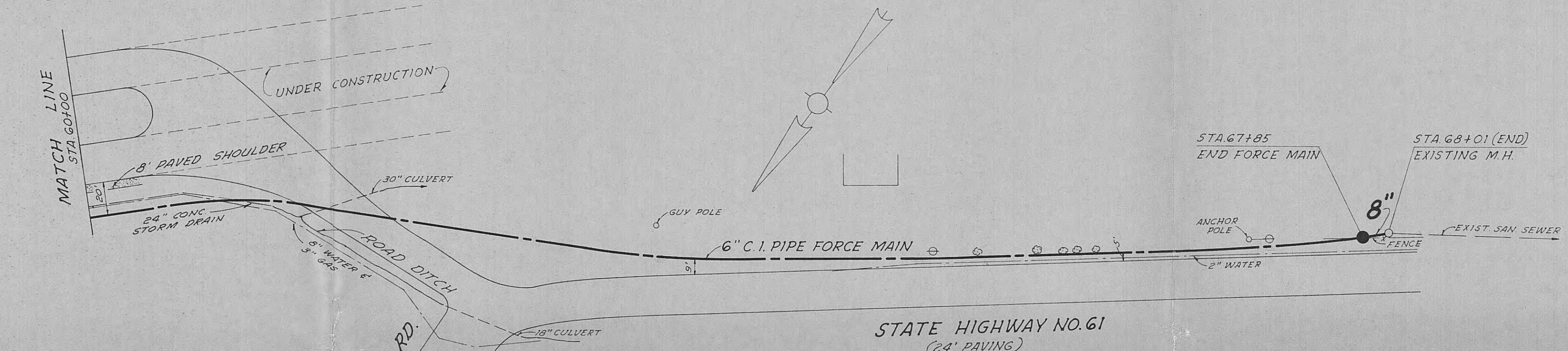


OVERFLOW DETAIL
SCALE: 3/8"=1'-0"



STATE HIGHWAY NO. 61
SOUTH BOUND LANE

PUMPING STATION
SCALE: 1"=10'-0"



STATE HIGHWAY NO. 61
(24' PAVING)

