



LEGEND

ROAD	—
RAILROADS	—+—+—+—+—
RIVERS	—~—~—~—~—
CREEKS	—~~~—~~—~—
APPROX. CORPORATE LIMITS	- - - - -
EXISTING SEWERS	—●—●—●—●—
PROPOSED SEWERS	—■—■—■—■—

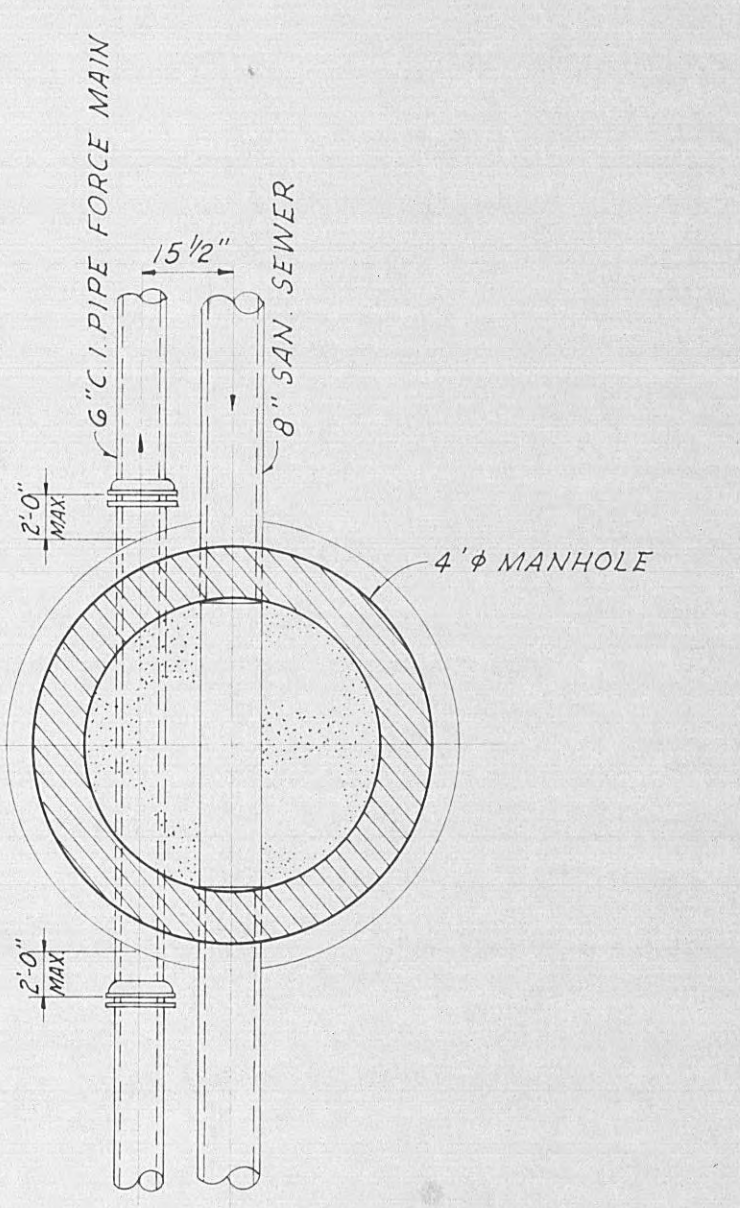
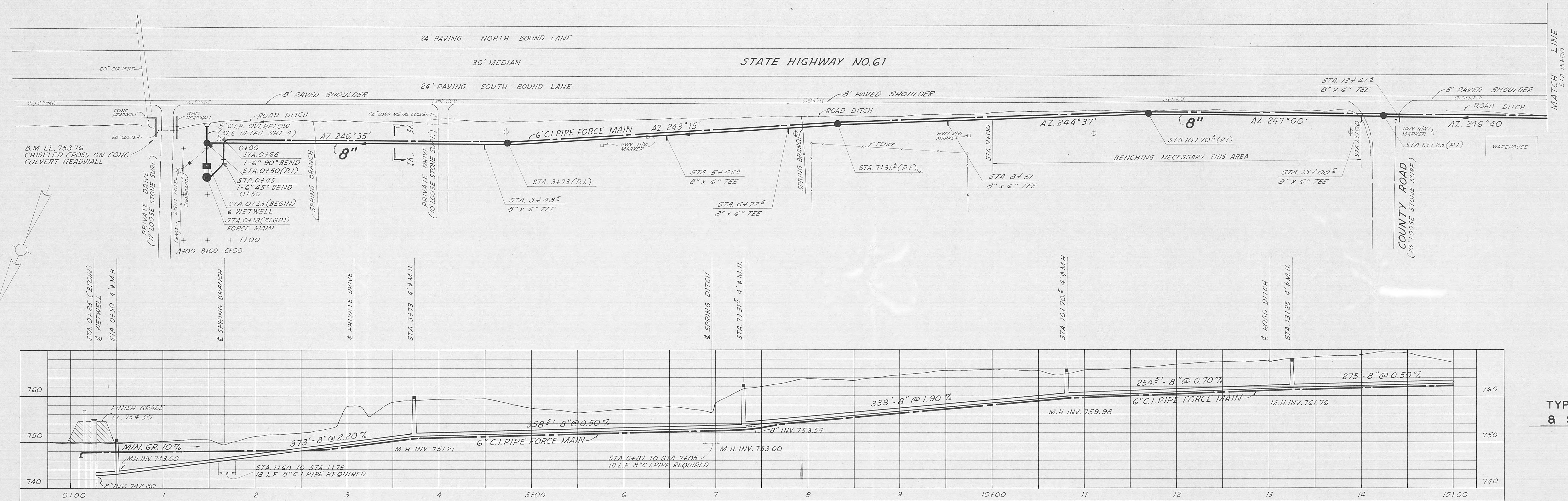
FORCE MAIN PS NO. 2  
FORCE MAIN PS NO. 3

NOTE  
ALL SEWERS 8" UNLESS OTHERWISE SHOWN

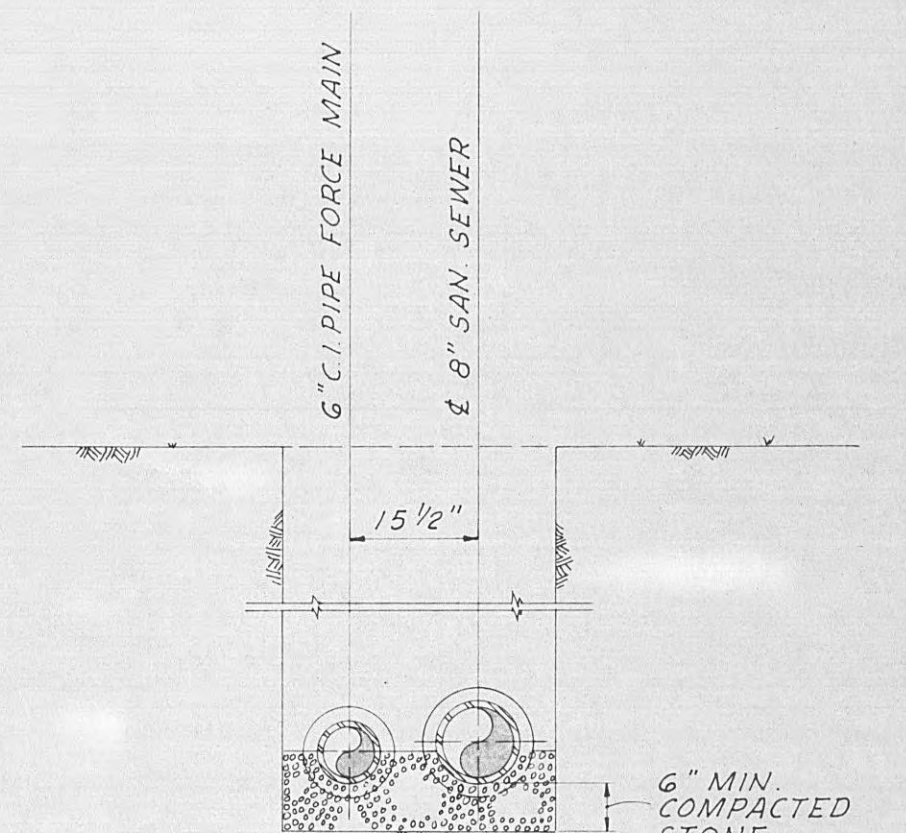
CITY OF HARRIMAN, TENNESSEE SEWERAGE SYSTEM IMPROVEMENT VOCATIONAL-TECHNICAL SCHOOL	
LOCATION MAP	
SCALE 1" = 800' DATE APRIL, 1970	WIEDEMAN AND SINGLETON ENGINEERS ATLANTA, GEORGIA

CORRECTED AS BUILT JAN., 1971

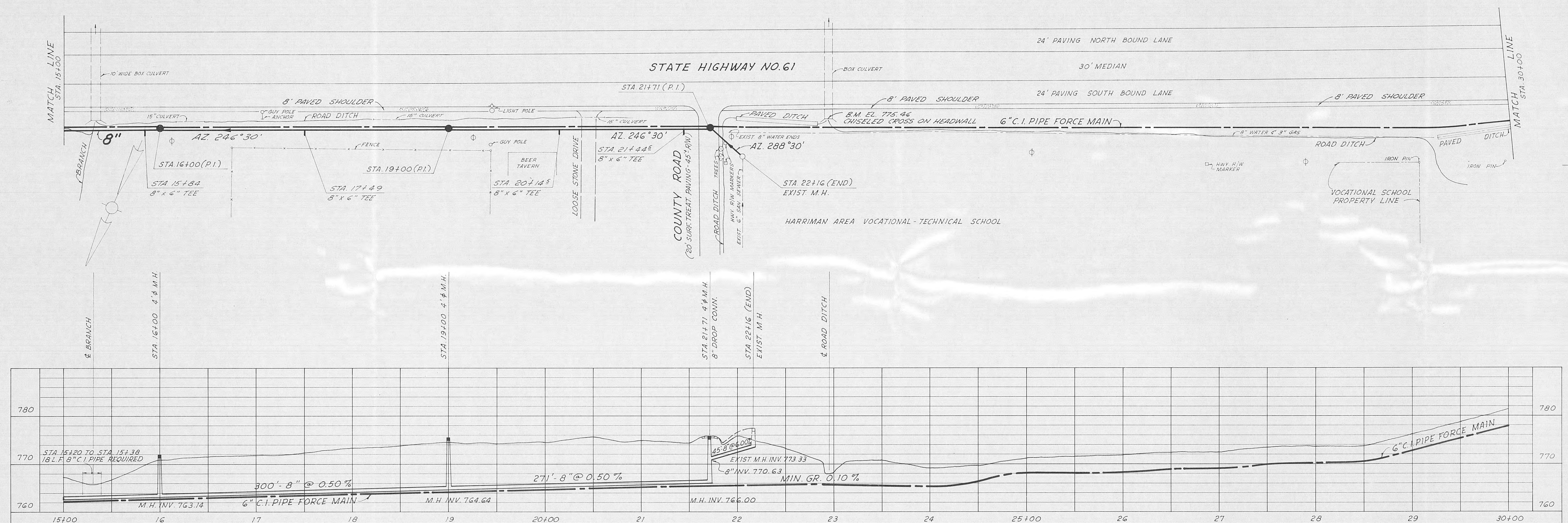




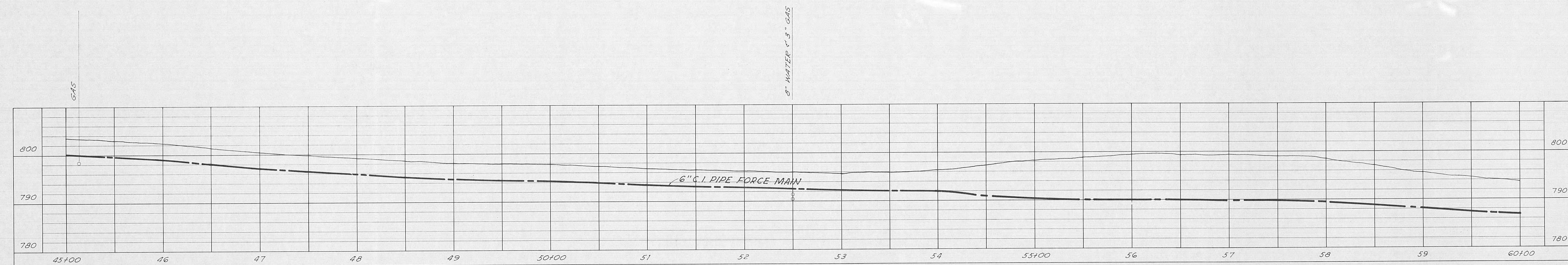
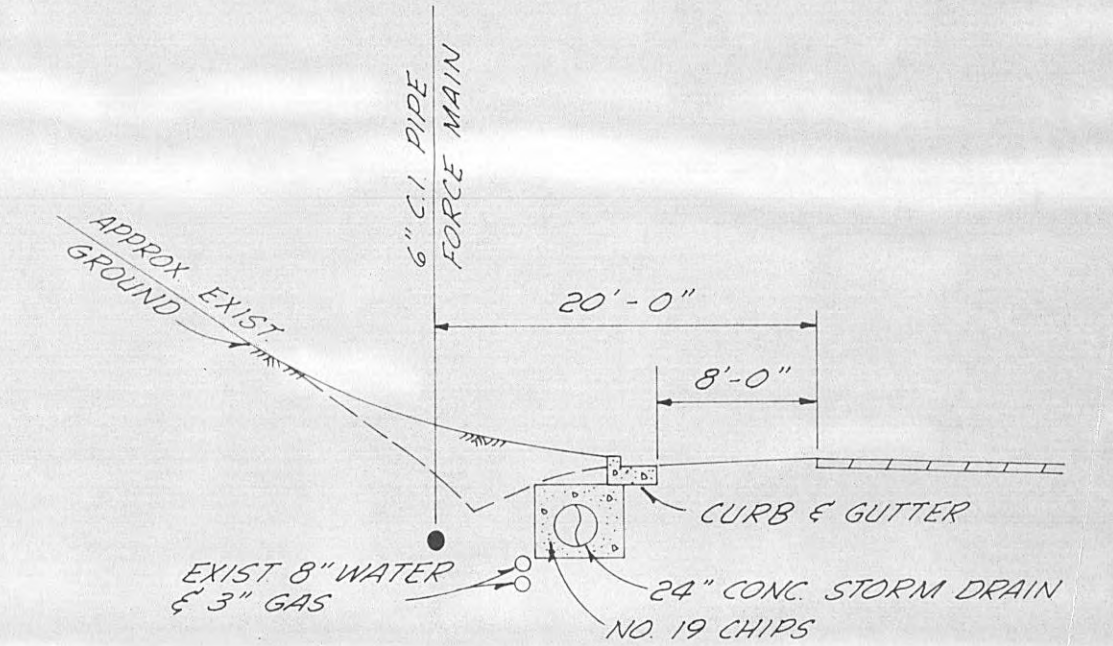
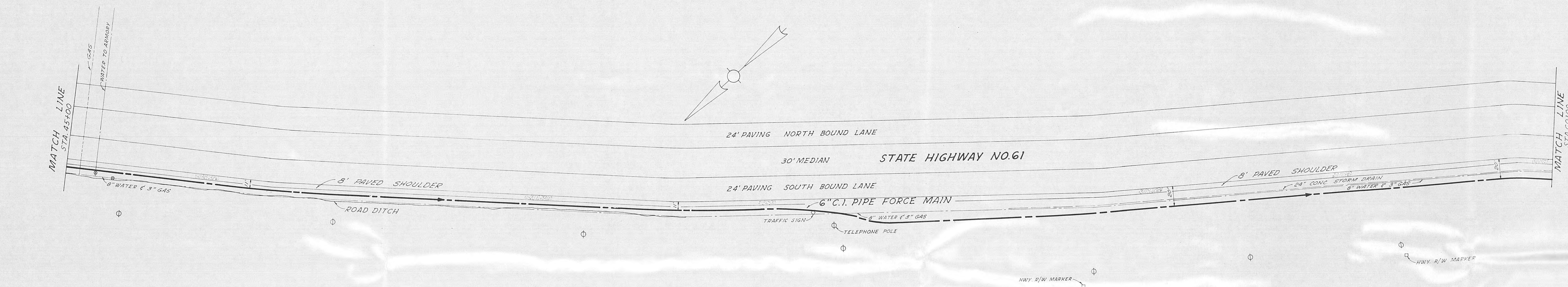
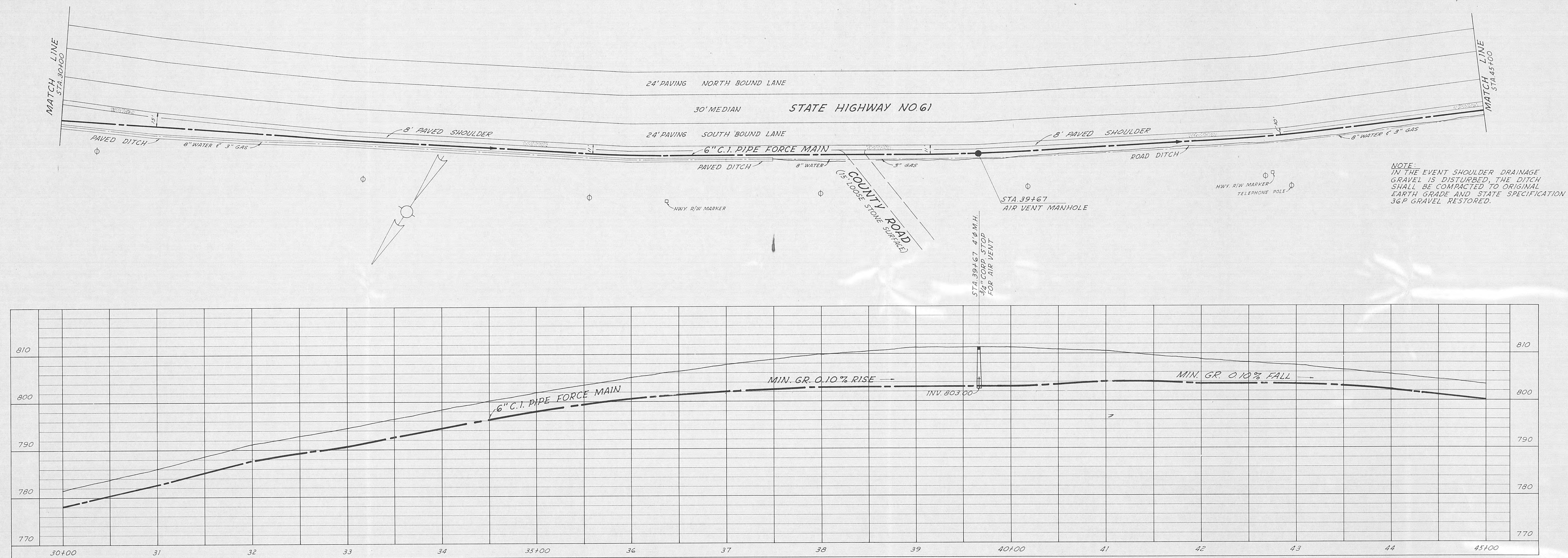
TYPICAL DETAIL OF FORCE MAIN  
& SAN. SEWER FOR MANHOLES  
SCALE: 3/8" = 1'-0"



TYPICAL SECTION "Y-Y"  
SAN. SEWER & FORCE MAIN BEDDING  
SCALE: 1/2" = 1'-0"







TYPICAL SECTION  
STA. 55+00 TO STA. 61+00  
SCALE: 1" = 10'-0"

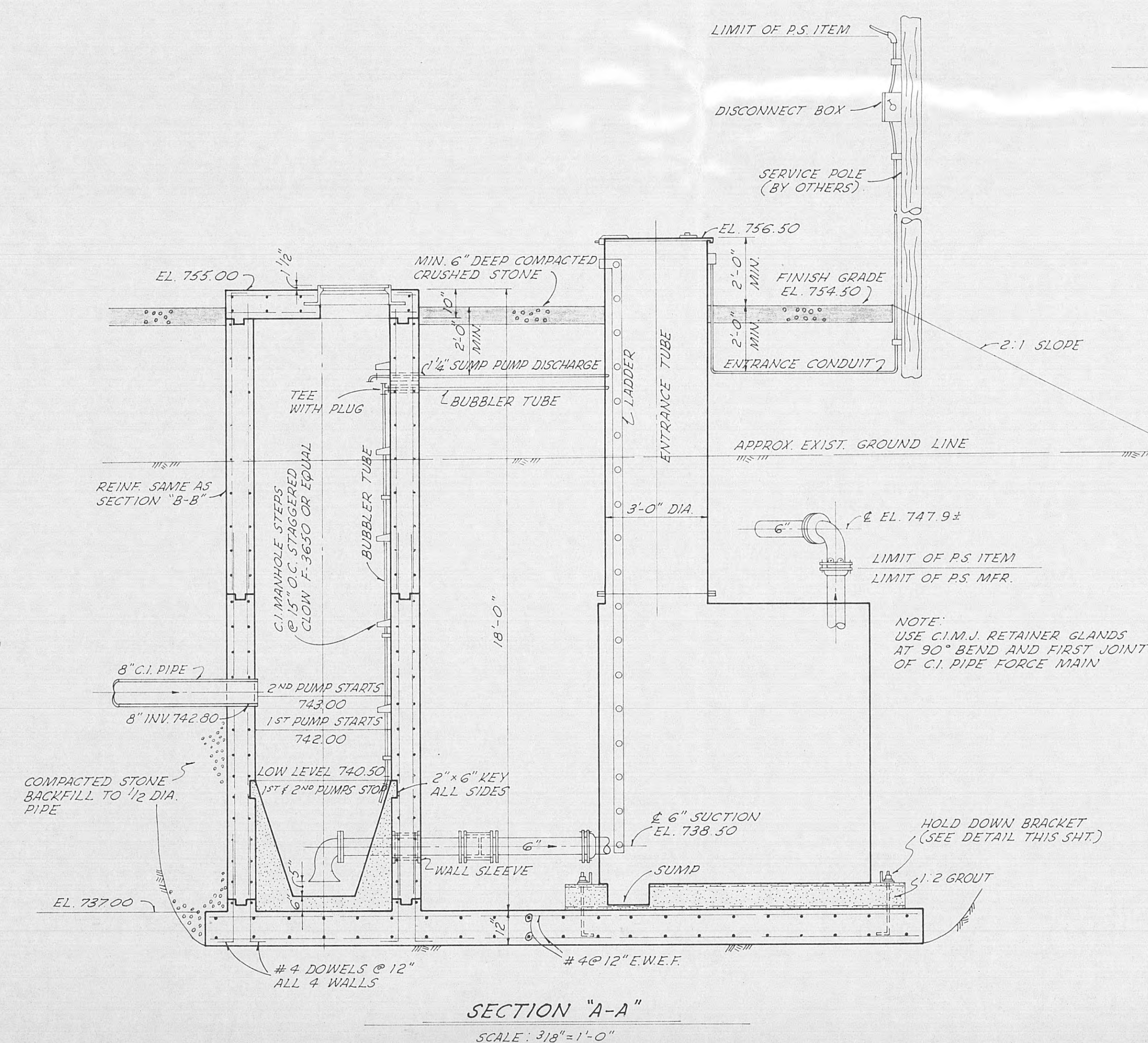
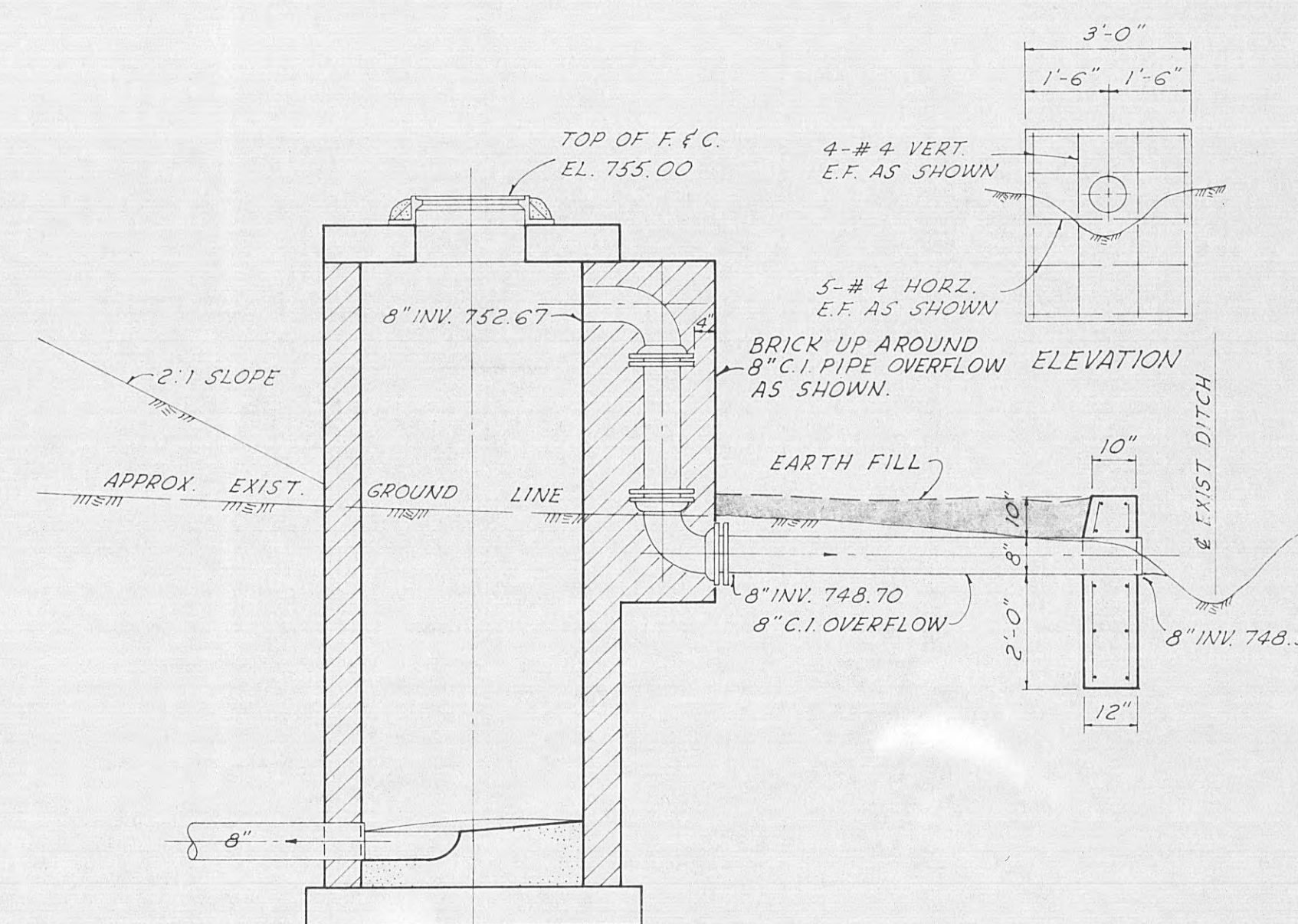
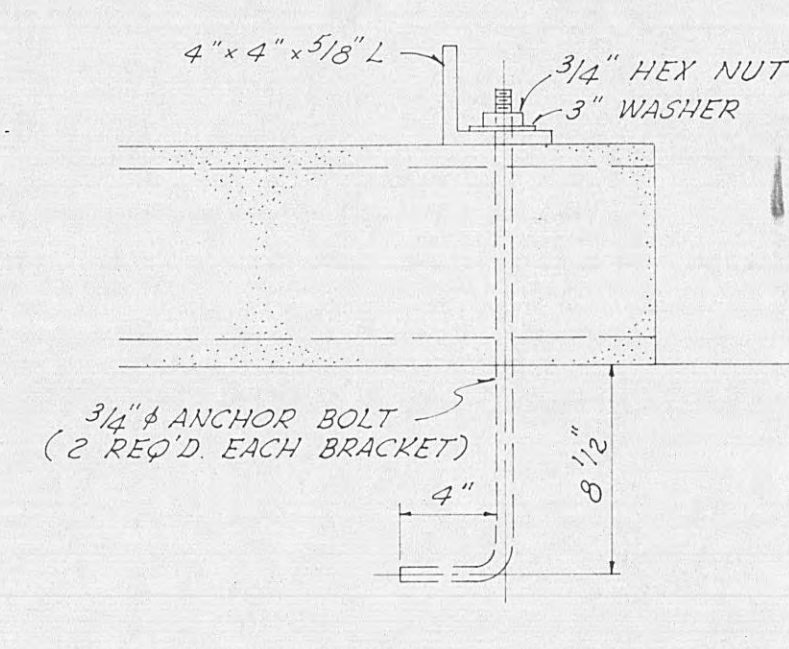
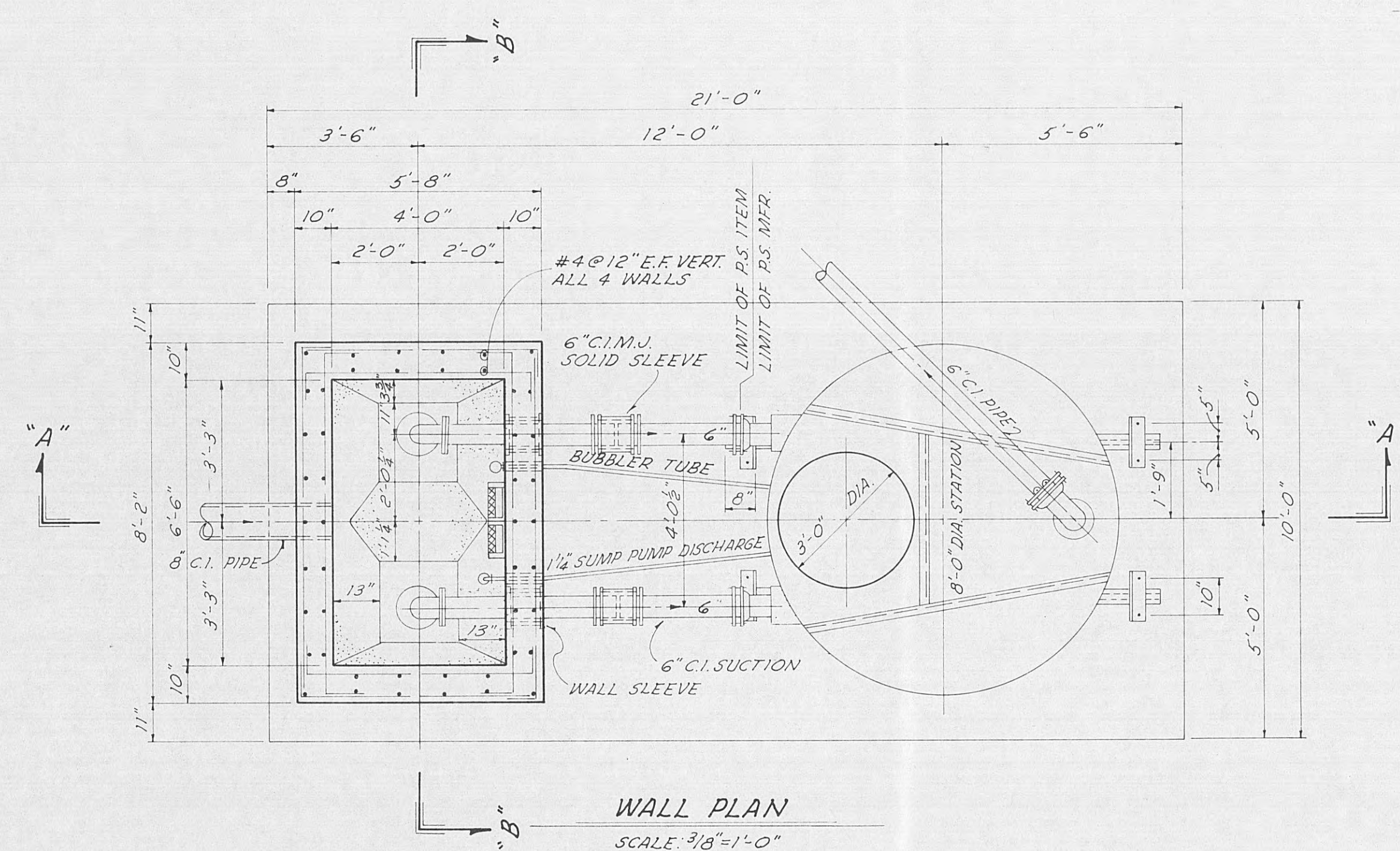
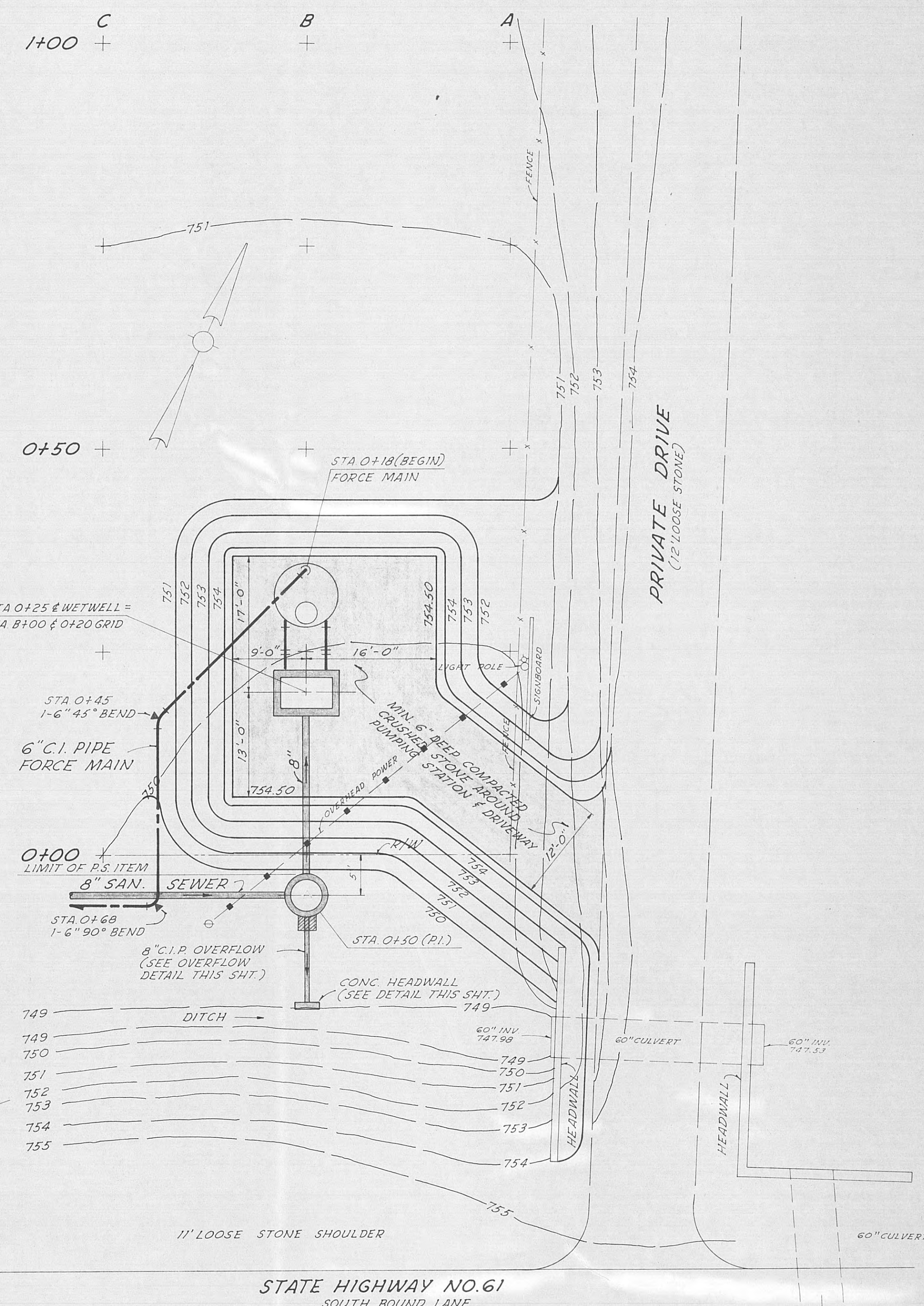
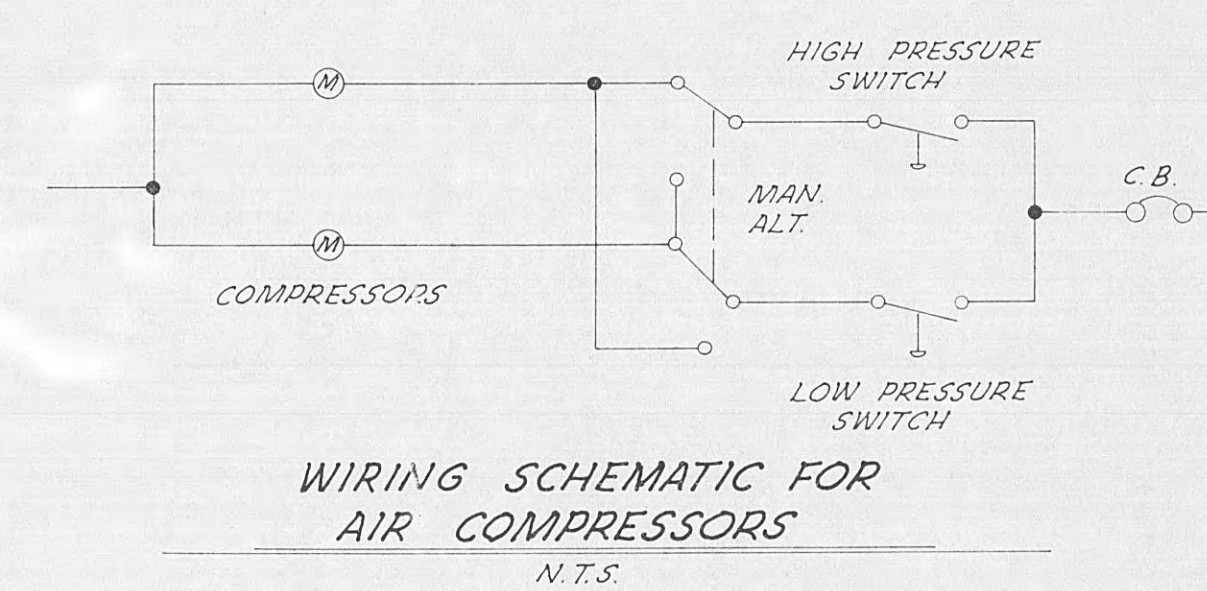
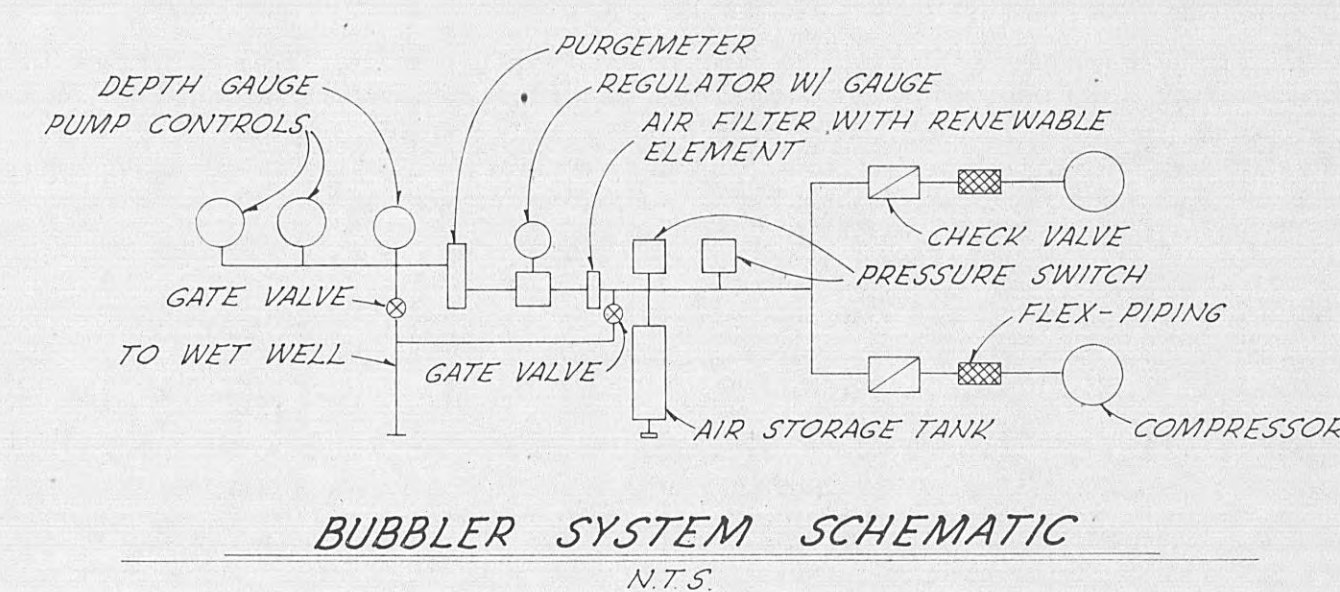
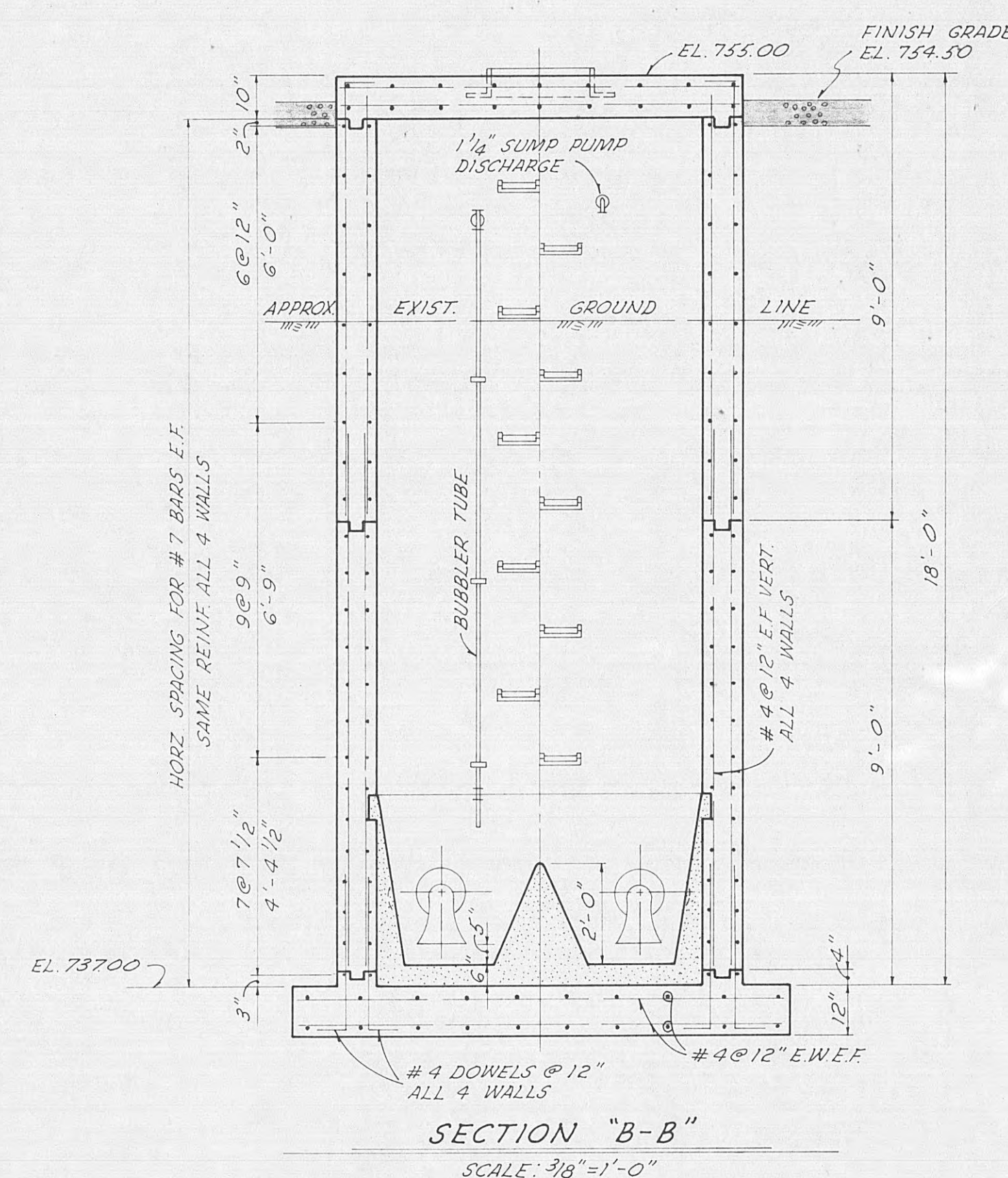
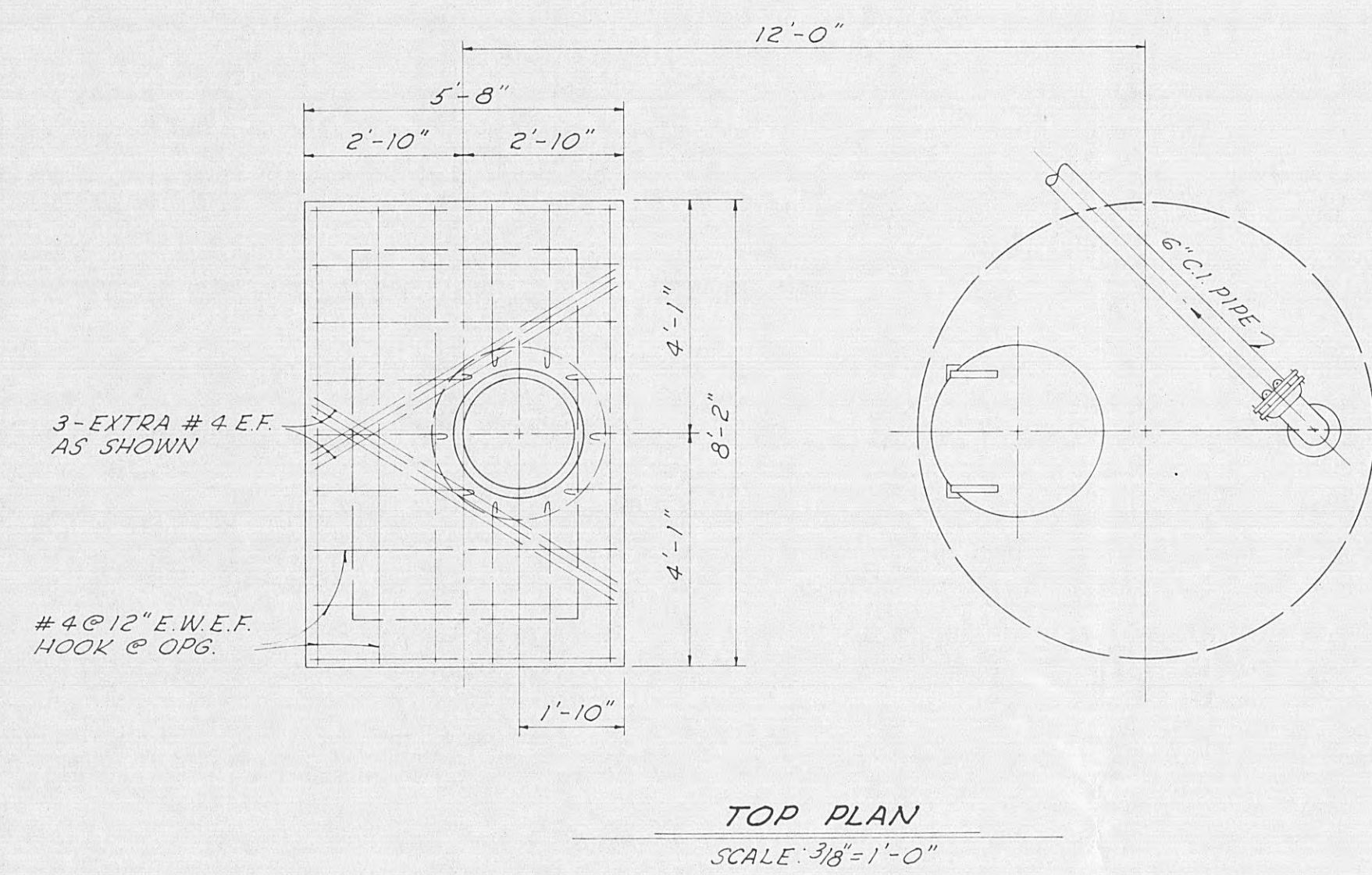
CITY OF HARRIMAN, TENNESSEE  
SEWERAGE SYSTEM IMPROVEMENTS  
VOCATIONAL-TECHNICAL SCHOOL AREA

PLAN & PROFILE  
6" FORCE MAIN STA. 30+00 TO STA. 60+00

SCALE 1"=50' HORIZ 1"=10' VERT DATE APRIL, 1970	WIEDEMAN AND SINGLETON ENGINEERS ATLANTA GEORGIA	SHEET 3 OF 5
---	--	--------------------

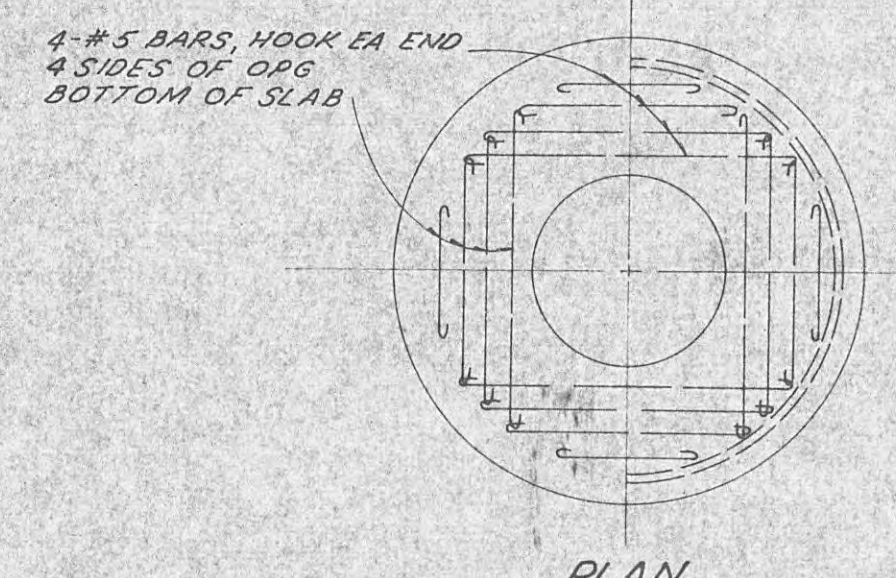
CORRECTED AS BUILT JAN. 1971



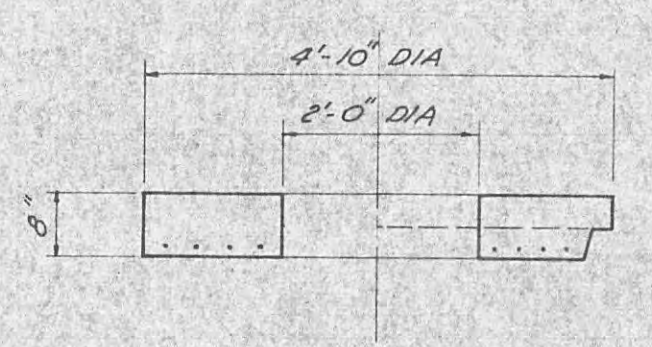




GOVERNING DIMENSIONS FOR CIRCULAR MANHOLES			
PIPE SIZE	DEFLECTION	M.H. DIA.	"X"
8" S. 15"	0" S. 30"	4' 0"	1'-10"

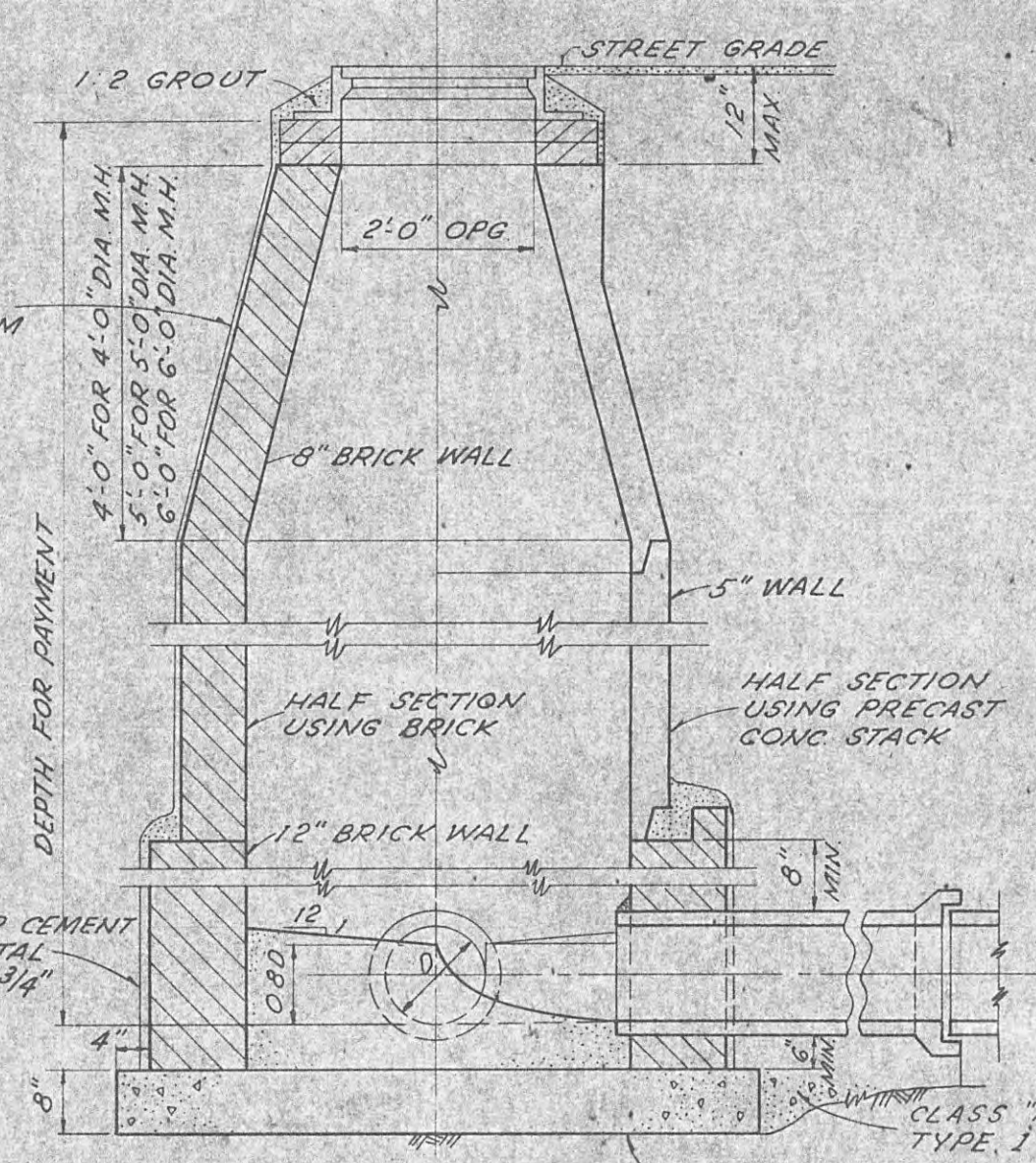


PLAN

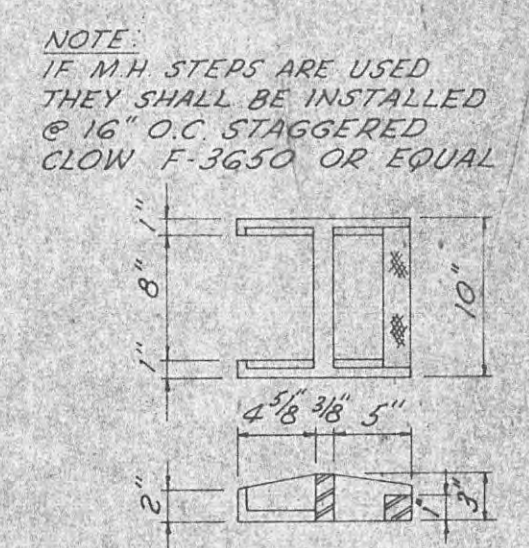


SECTION  
4'-0" COVER SLAB  
SCALE: 1/2" = 1'-0"

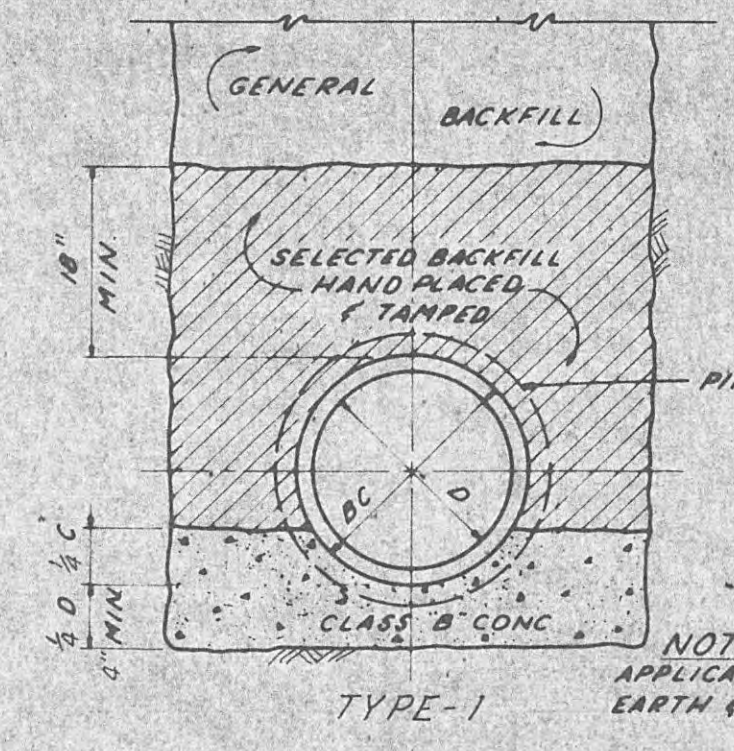
WATERPROOFING - 1 COAT OF INERTOL STANDARD THICK AT THE RATE OF 1 GALLON PER 125 SQ. FT. WATERPROOF WALLS FROM 18" BELOW FINISH GRADE DOWN TO AND OVER FOOTINGS.



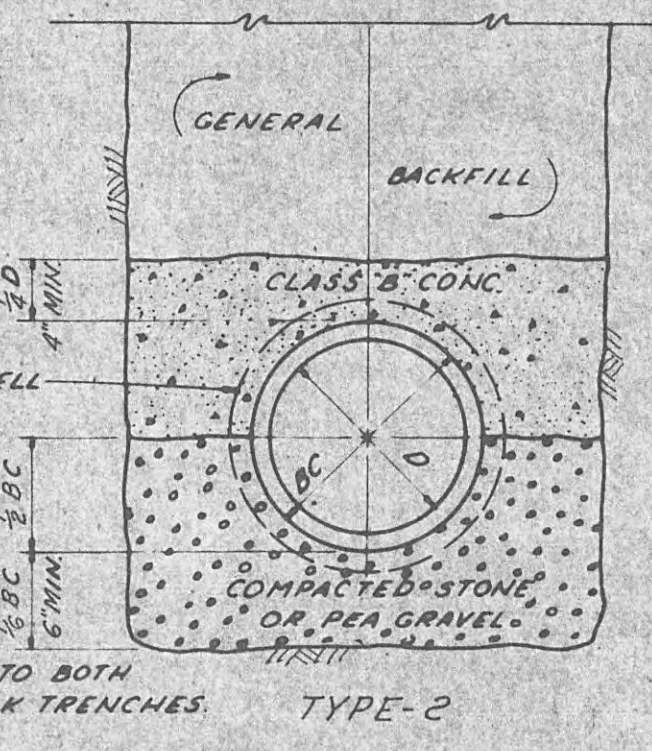
SECTION  
4'-5" OR 6' DIA MANHOLE  
(ALTERNATE CONSTRUCTION)  
SCALE: 1/2" = 1'-0"



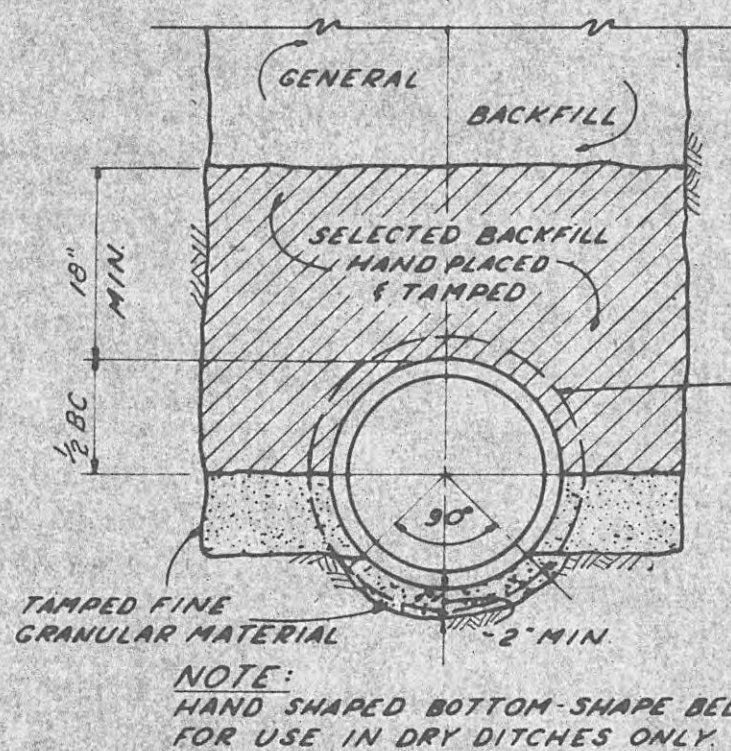
C.I. MANHOLE  
STEP DETAIL  
SCALE: 1/2" = 1'-0"



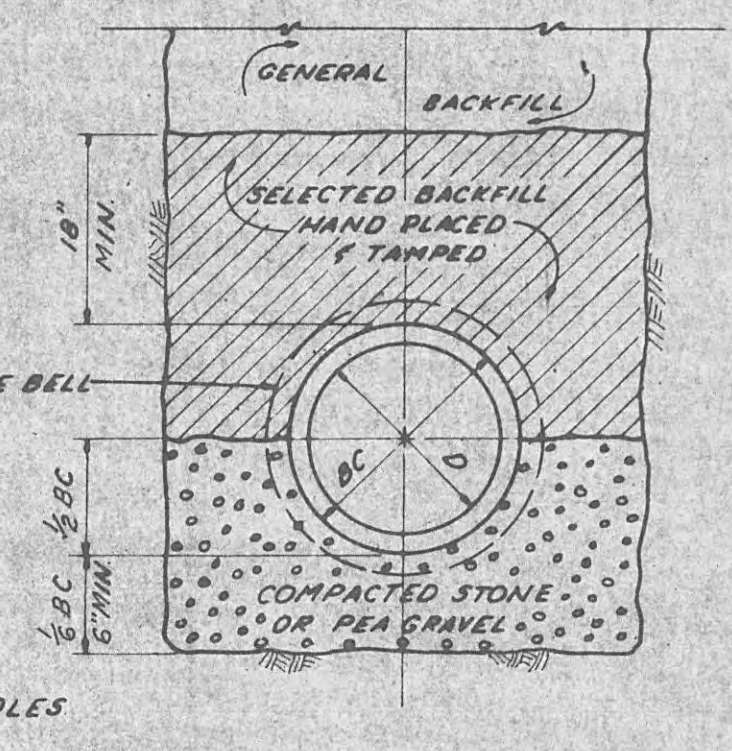
TYPE-1  
CLASS "A" BEDDING  
USE EITHER TYPE



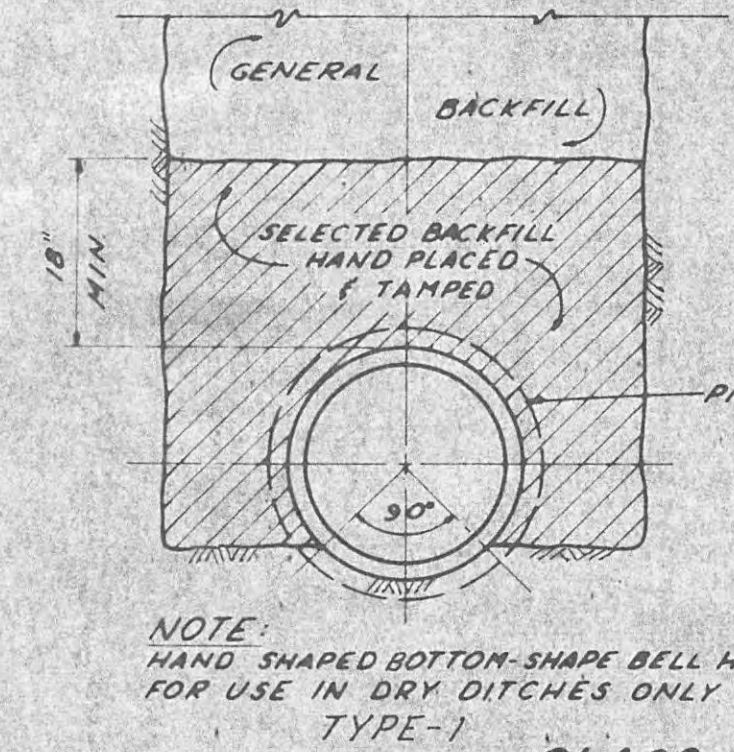
TYPE-2  
CLASS "A" BEDDING  
USE EITHER TYPE



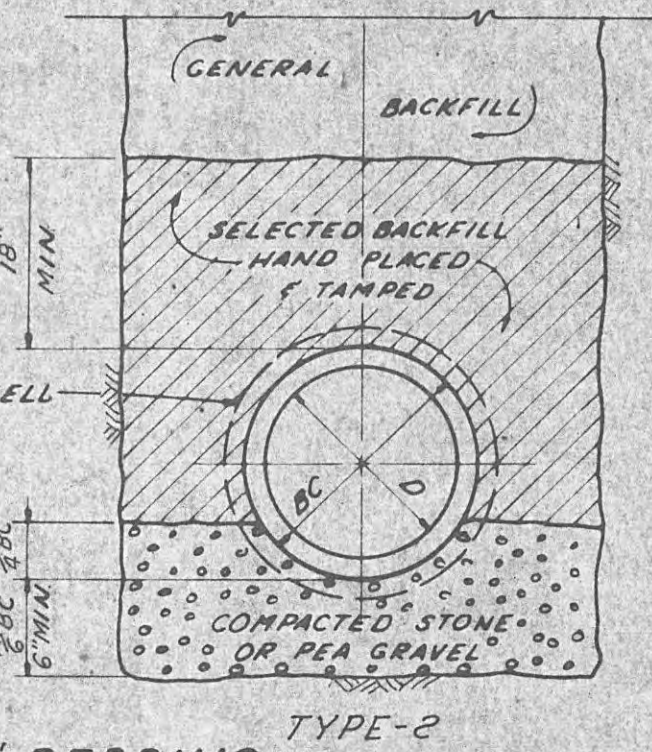
TYPE-1  
CLASS "B" BEDDING  
USE EITHER TYPE



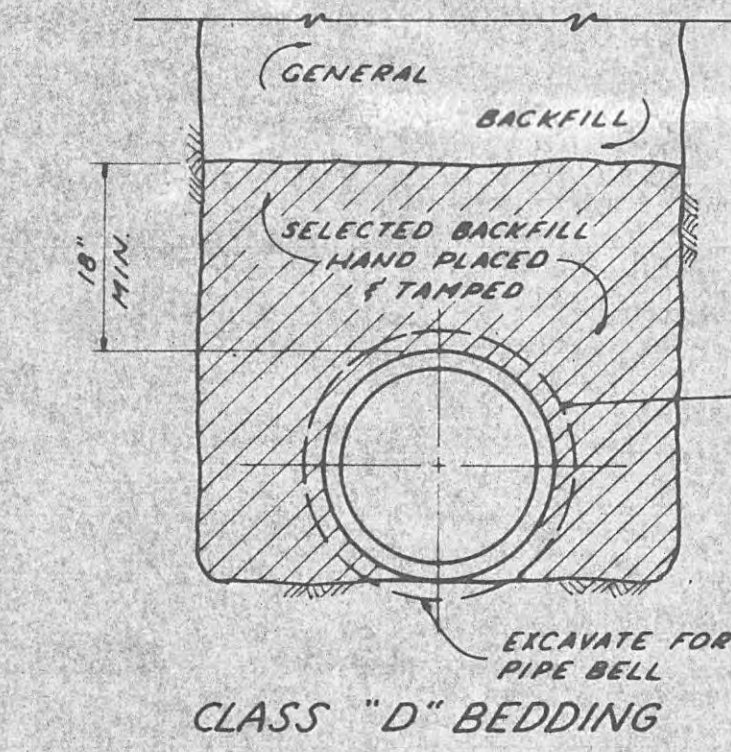
TYPE-2  
CLASS "B" BEDDING  
USE EITHER TYPE



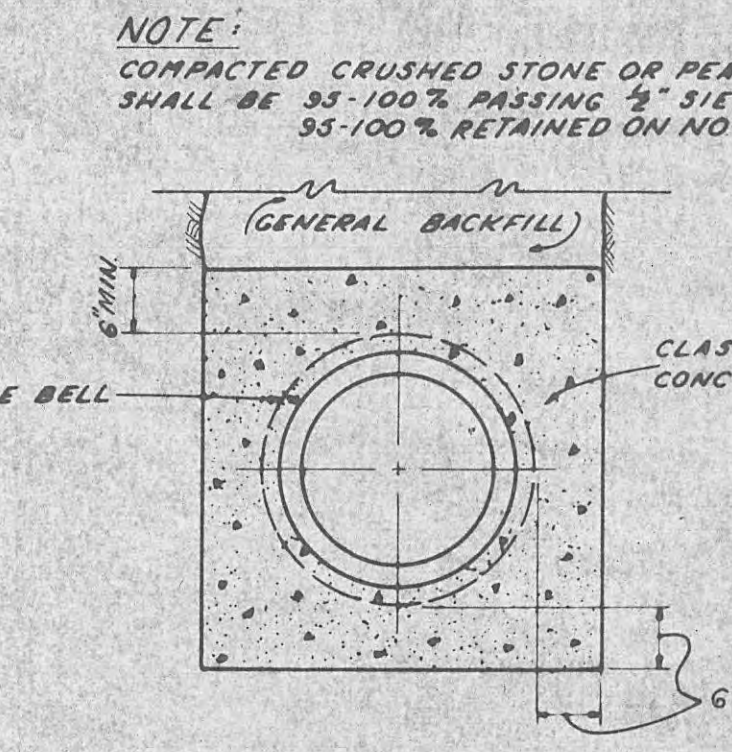
TYPE-1  
CLASS "C" BEDDING  
USE EITHER TYPE



TYPE-2  
CLASS "C" BEDDING  
USE EITHER TYPE

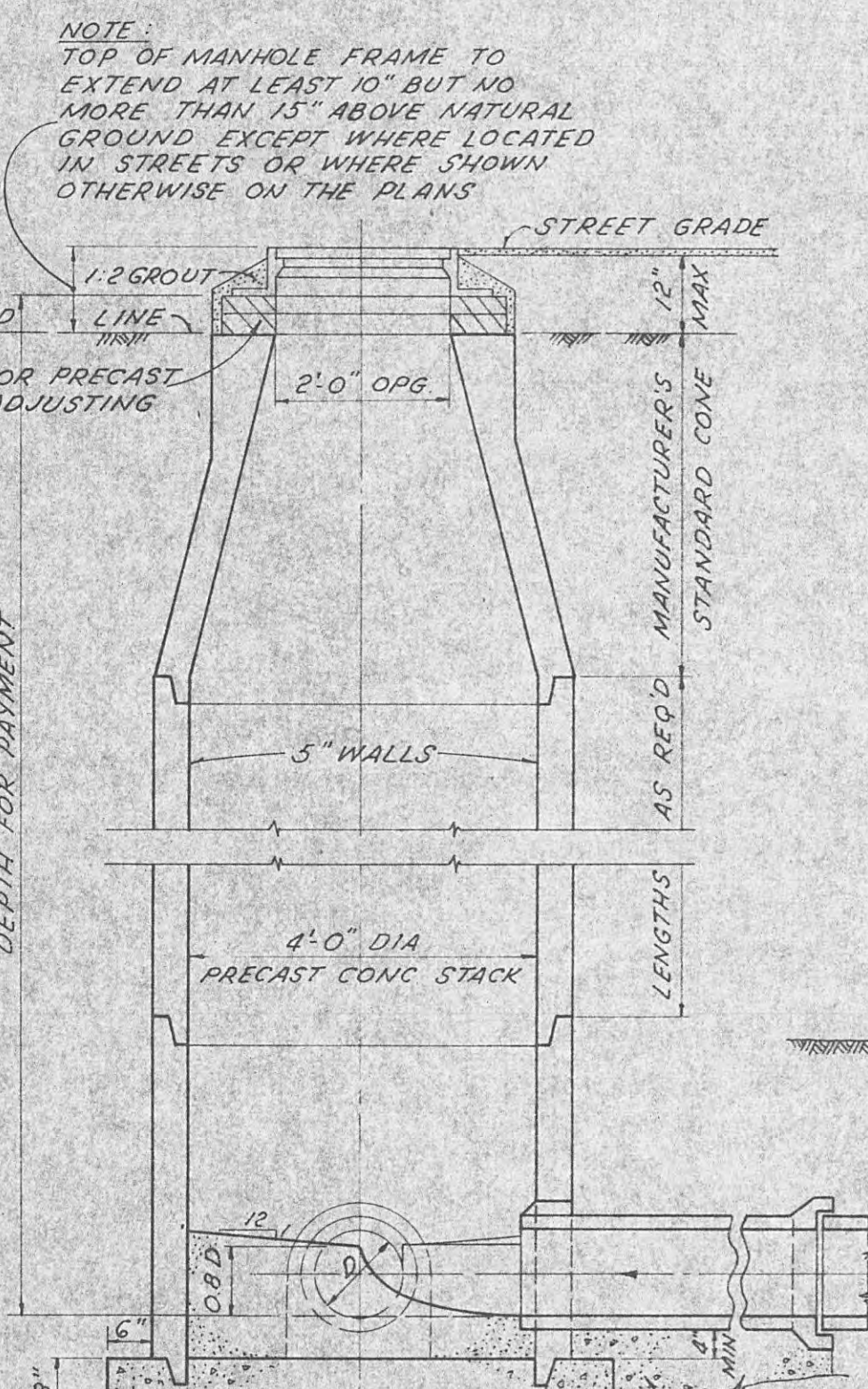


CLASS "D" BEDDING

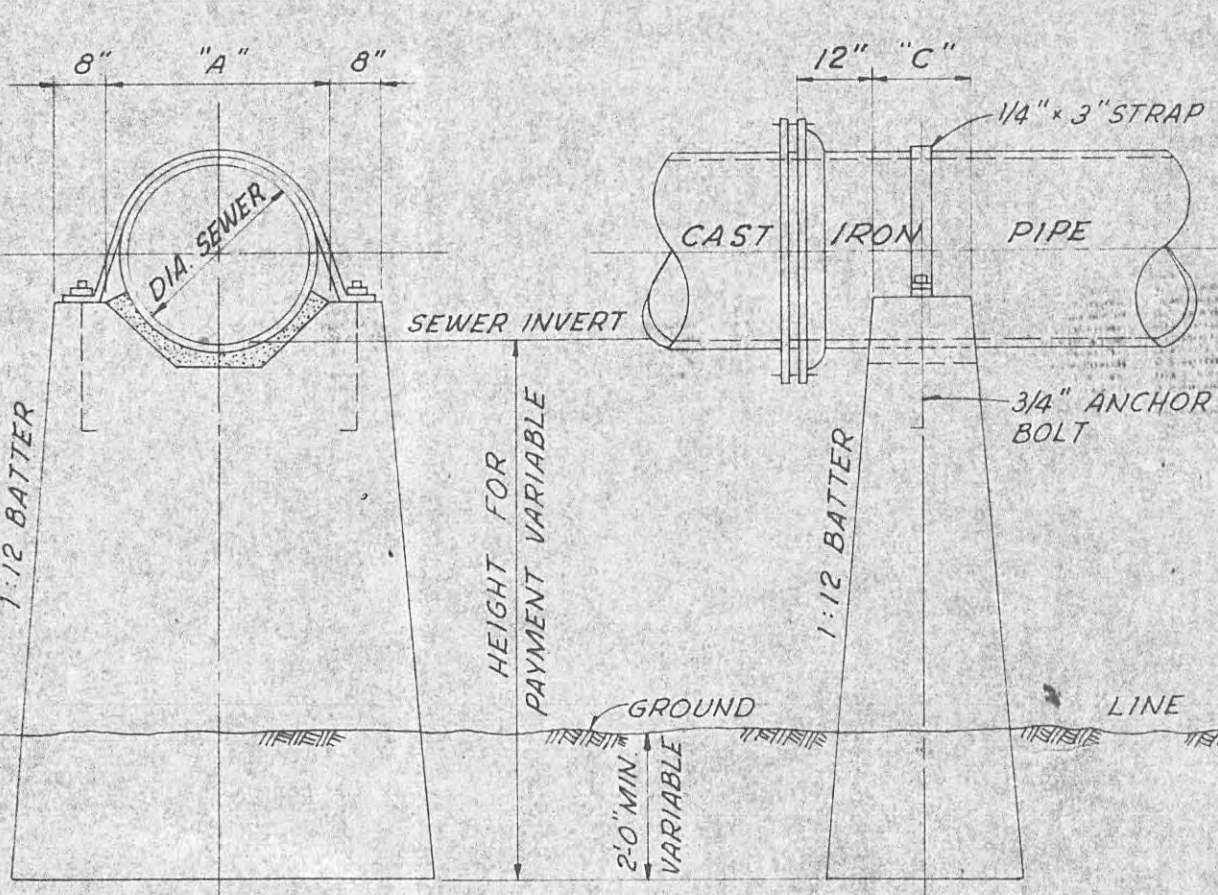


CONCRETE ENCASEMENT  
SCALE: 1/2" = 1'-0"

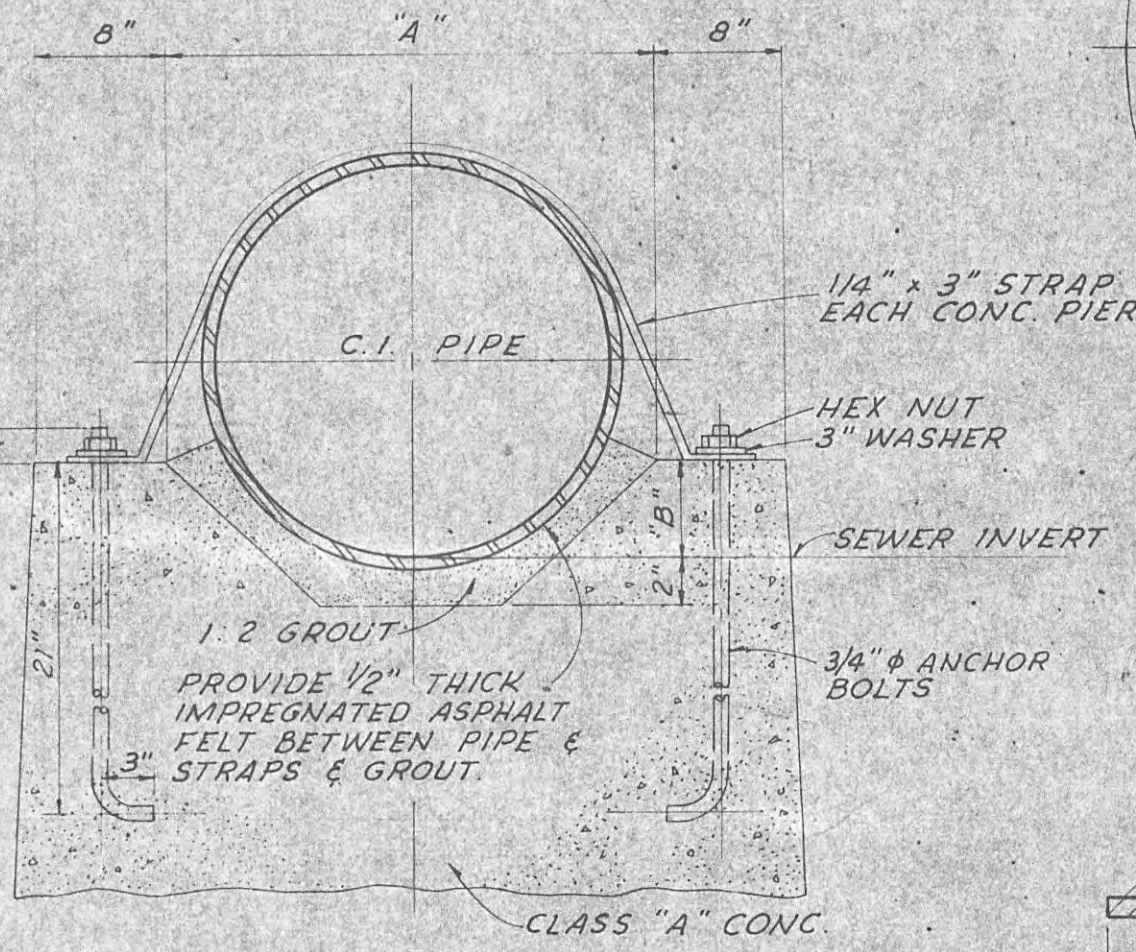
TYPICAL INVERT PLAN  
(ALL SIZES)  
SCALE: 1/2" = 1'-0"



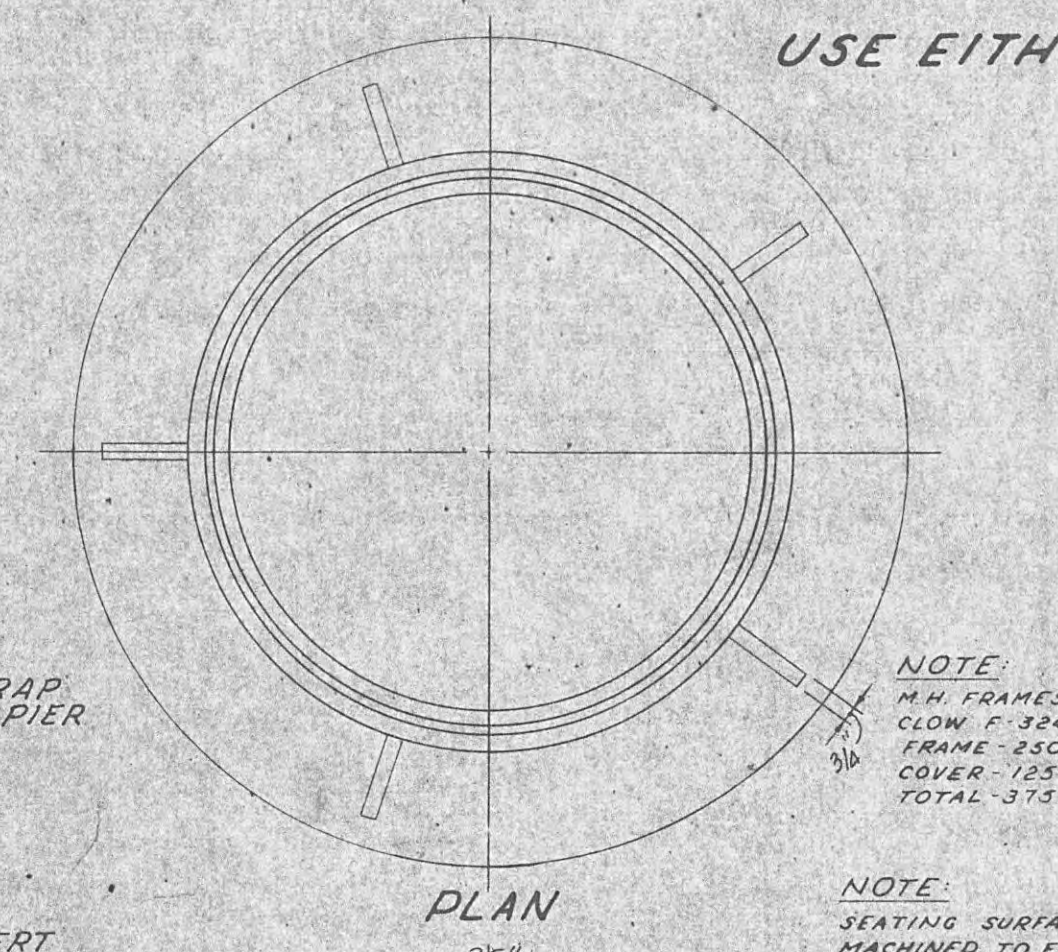
TYPICAL 4'-0" SHALLOW MANHOLE



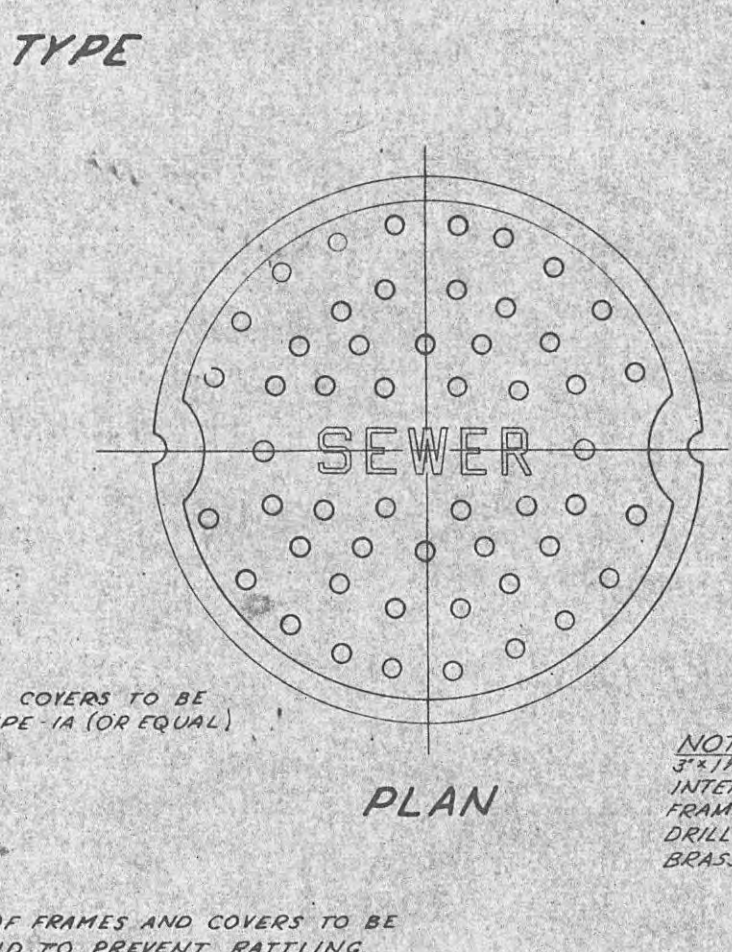
TYPICAL DETAIL OF C.I. PIPE ON PIERS  
SCALE: 1/2" = 1'-0"



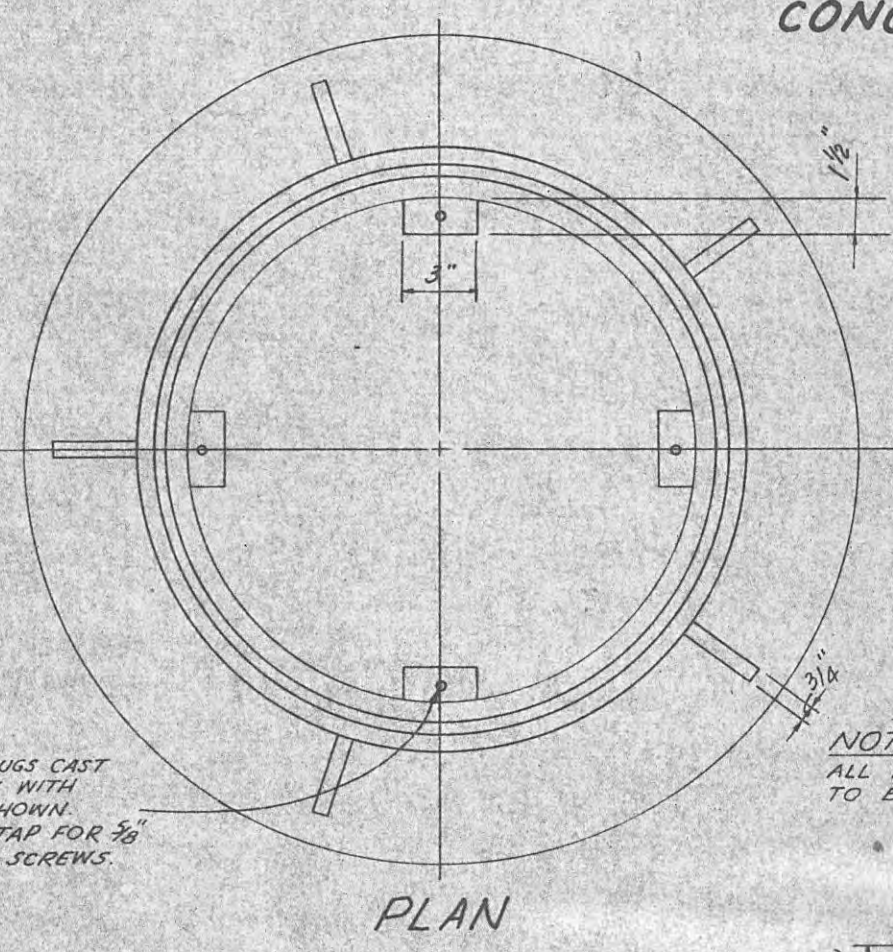
ENLARGED SECTION  
SCALE: 1/2" = 1'-0"



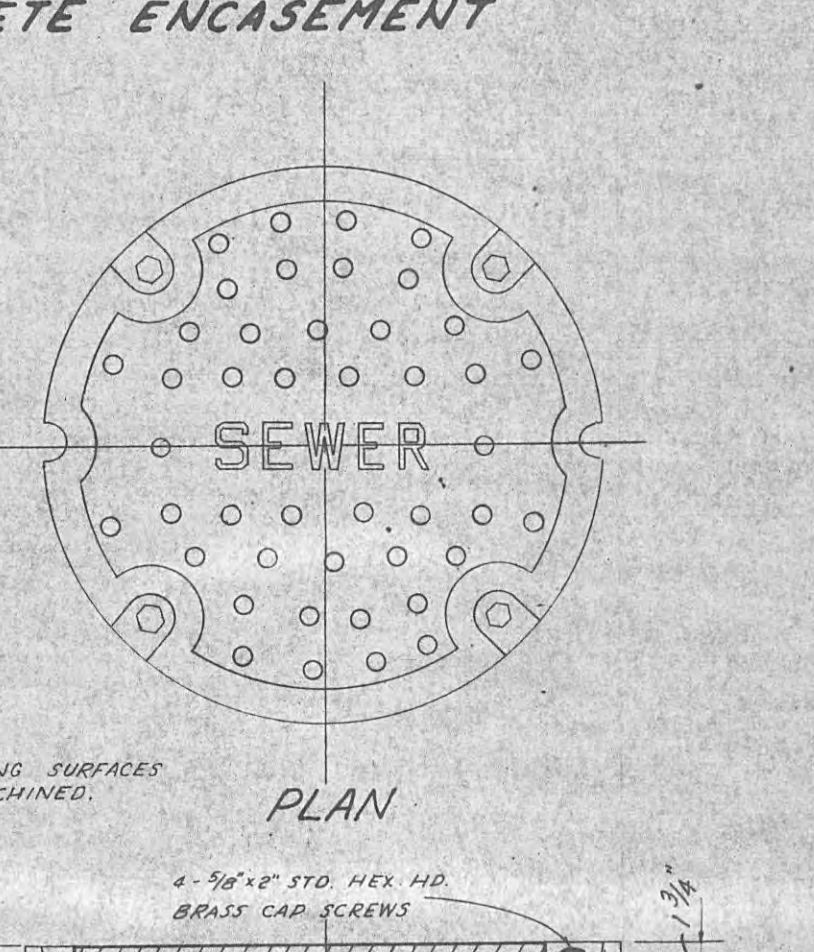
SECTION  
TYPICAL TYPE "A"  
C.I. MANHOLE FRAME  
NOT TO SCALE



SECTION  
TYPICAL TYPE "B"  
C.I. MANHOLE COVER  
NOT TO SCALE

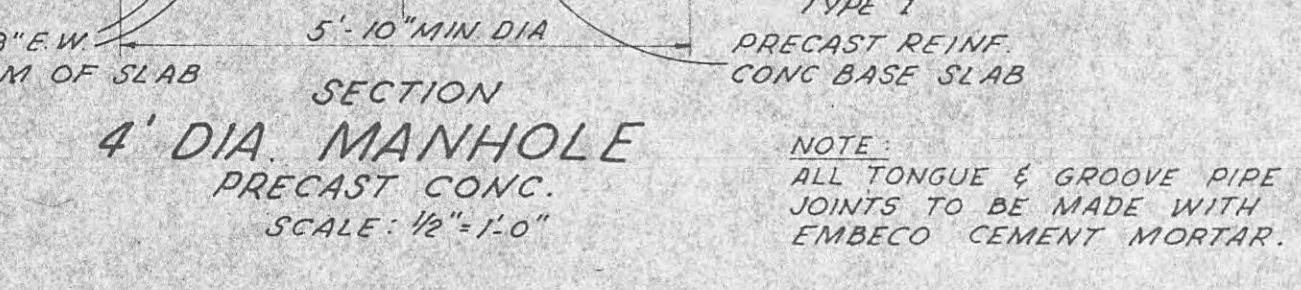


SECTION  
TYPICAL TYPE "B" (WATERTIGHT)  
C.I. MANHOLE FRAME  
NOT TO SCALE



SECTION  
TYPICAL TYPE "B" (WATERTIGHT)  
C.I. MANHOLE COVER  
NOT TO SCALE

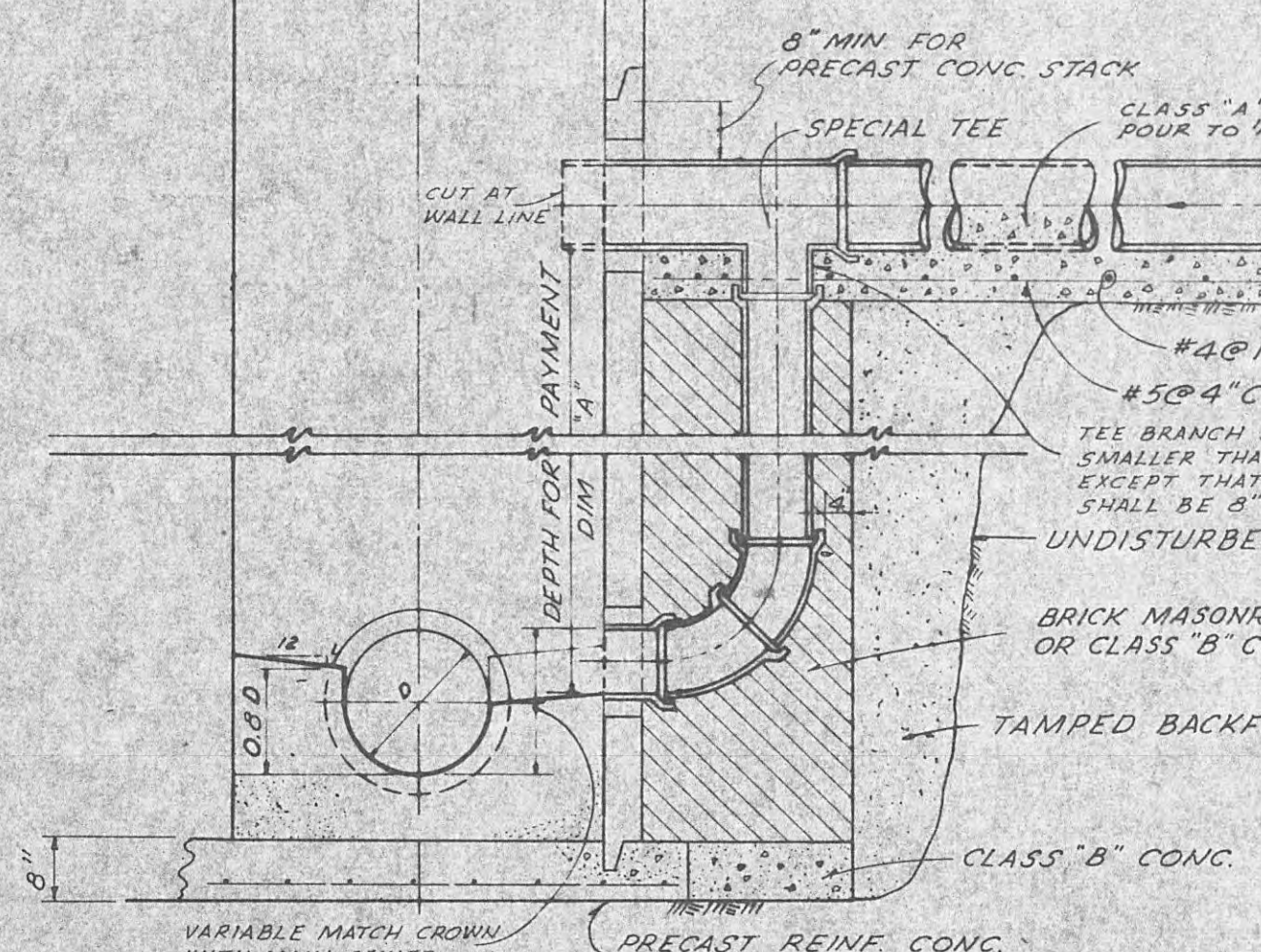
CUTOUT SCHEDULE	PIPE SIZE	MIN. DIA.
8"	14"	
10"	16"	
12"	20"	
15"	24"	



SECTION  
4' DIA MANHOLE  
PRECAST CONC.  
SCALE: 1/2" = 1'-0"

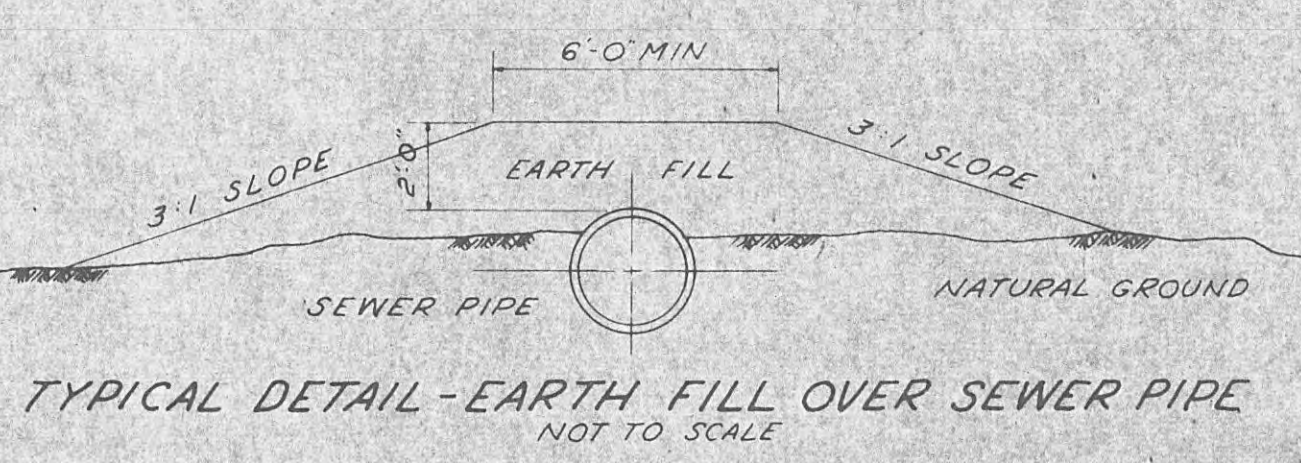
SCHEDULE FOR DROP CONNECTIONS DIA"			
SEWER SIZE	DROP SIZE	MINIMUM INV. TO INV.	
8"	8"	24"	
10"	8"	24"	

GOVERNING DIMENSIONS FOR CONCRETE PIERS			
I.D. PIPE	A	B	C
8"	11 1/2"	2"	9"
10"	13 1/2"	2 1/2"	10"
12"	15 1/2"	3"	10"
15"	19"	4"	11"

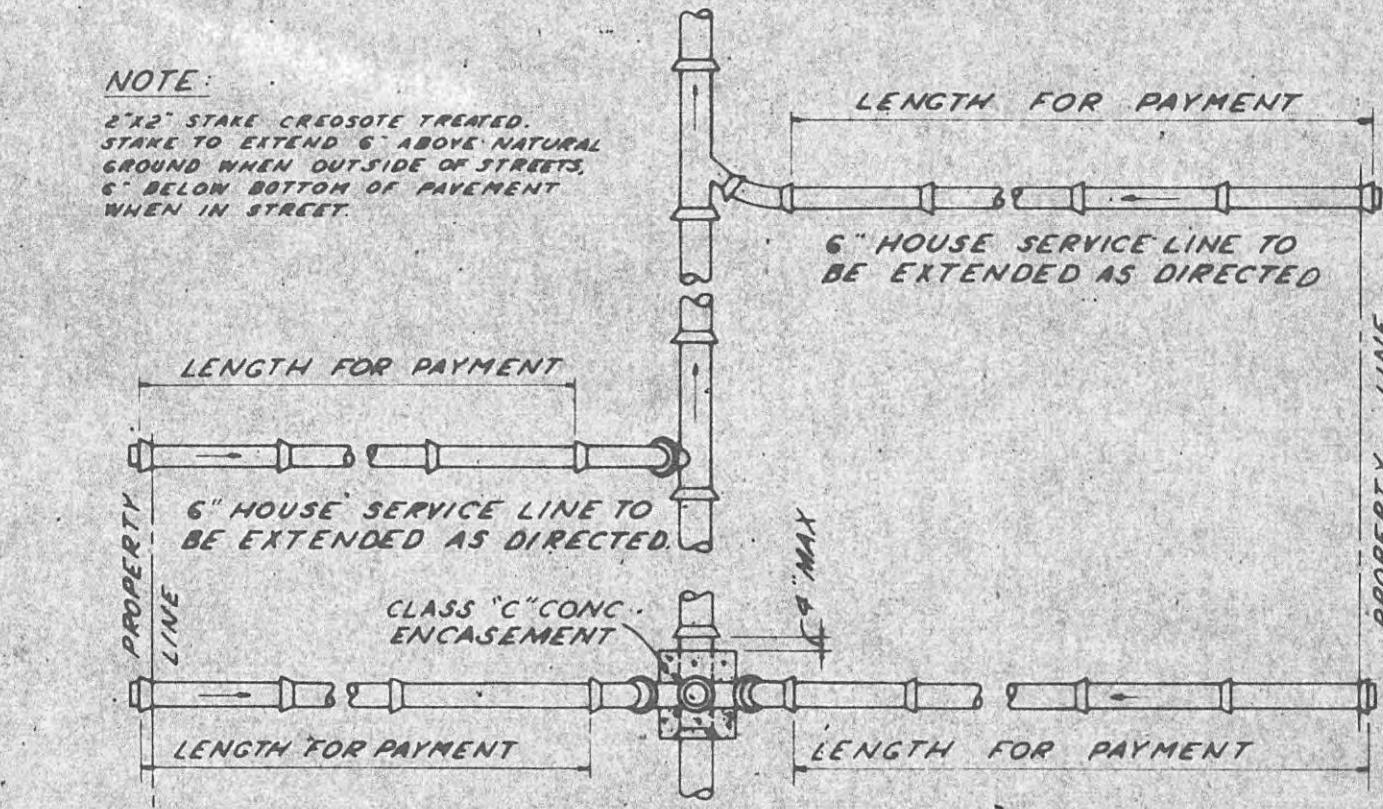


TYPICAL SECTION  
MANHOLE DROP CONNECTION  
SCALE: 1/2" = 1'-0"

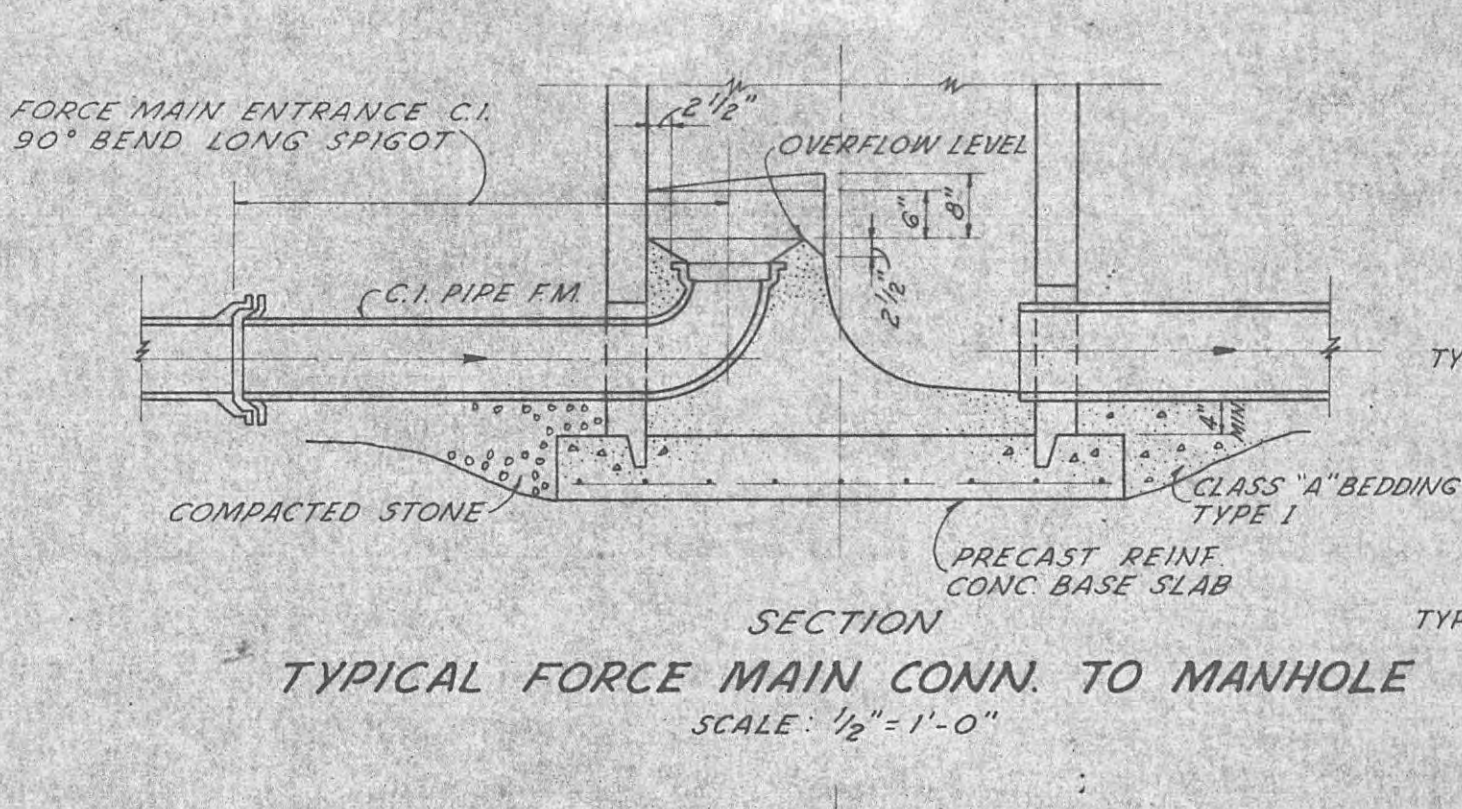
TYPICAL DETAILS  
SQ. CONC. COLLAR FOR JOINTING C.I. PIPE TO SEWER PIPE  
NOT TO SCALE



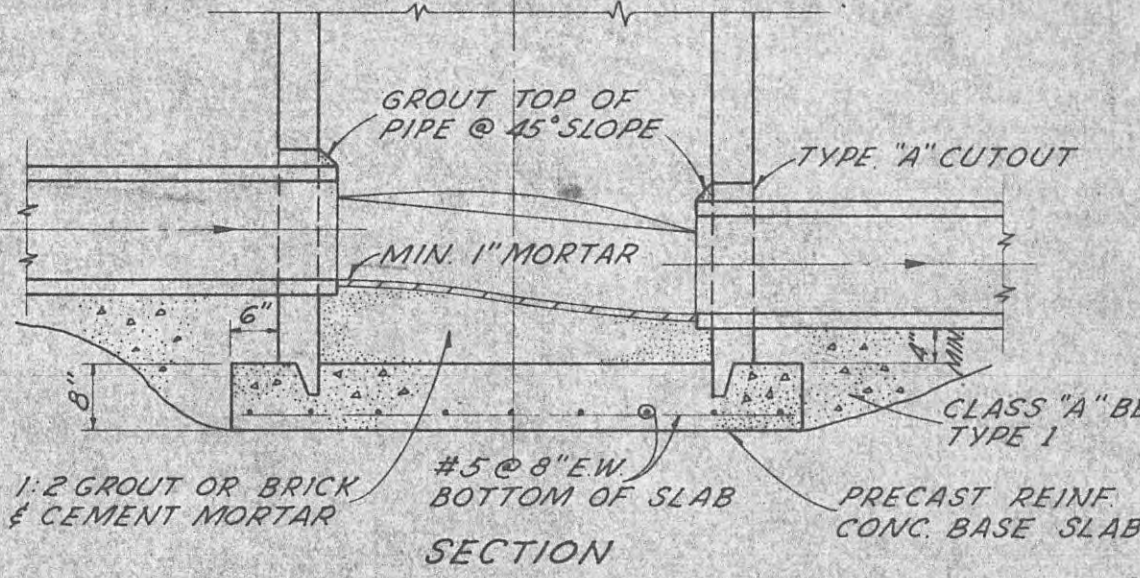
TYPICAL DETAIL - EARTH FILL OVER SEWER PIPE  
NOT TO SCALE



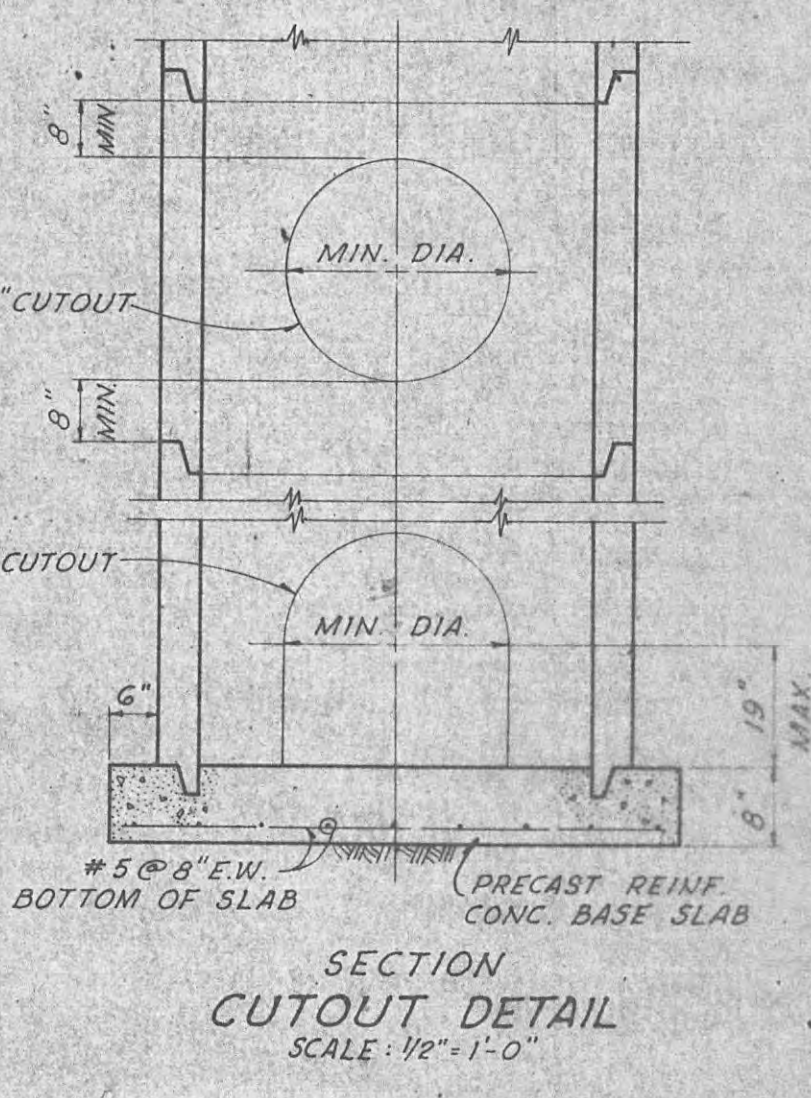
TYPICAL DETAILS OF SANITARY HOUSE SERVICE LINE  
NOT TO SCALE



TYPICAL FORCE MAIN CONN. TO MANHOLE  
SCALE: 1/2" = 1'-0"



TYPICAL MANHOLE INVERT  
(ALL SIZES)  
SCALE: 1/2" = 1'-0"



SECTION  
TYPICAL DETAIL  
SCALE: 1/2" = 1'-0"

CITY OF HARRIMAN, TENNESSEE  
SEWERAGE SYSTEM IMPROVEMENTS  
VOCATIONAL-TECHNICAL SCHOOL AREA

MISCELLANEOUS DETAILS

SCALE AS SHOWN	WIEDEMAN AND SINGLETON ENGINEERS	SHEET 5
DATE	APRIL, 1970	
	ATLANTA	GEORGIA

CORRECTED AS BUILT JAN, 1971

USE FOR 4479-000