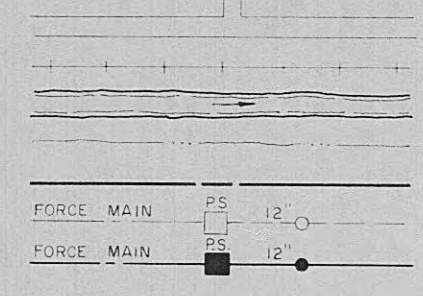


APPROVED

LEGEND

- ROADS
- RAILROADS
- RIVERS
- CREEKS
- APPROX. CORPORATE LIMITS
- EXISTING SEWERS
- PROPOSED SEWERS



NOTE:
ALL SEWERS 6" UNLESS OTHERWISE SHOWN.

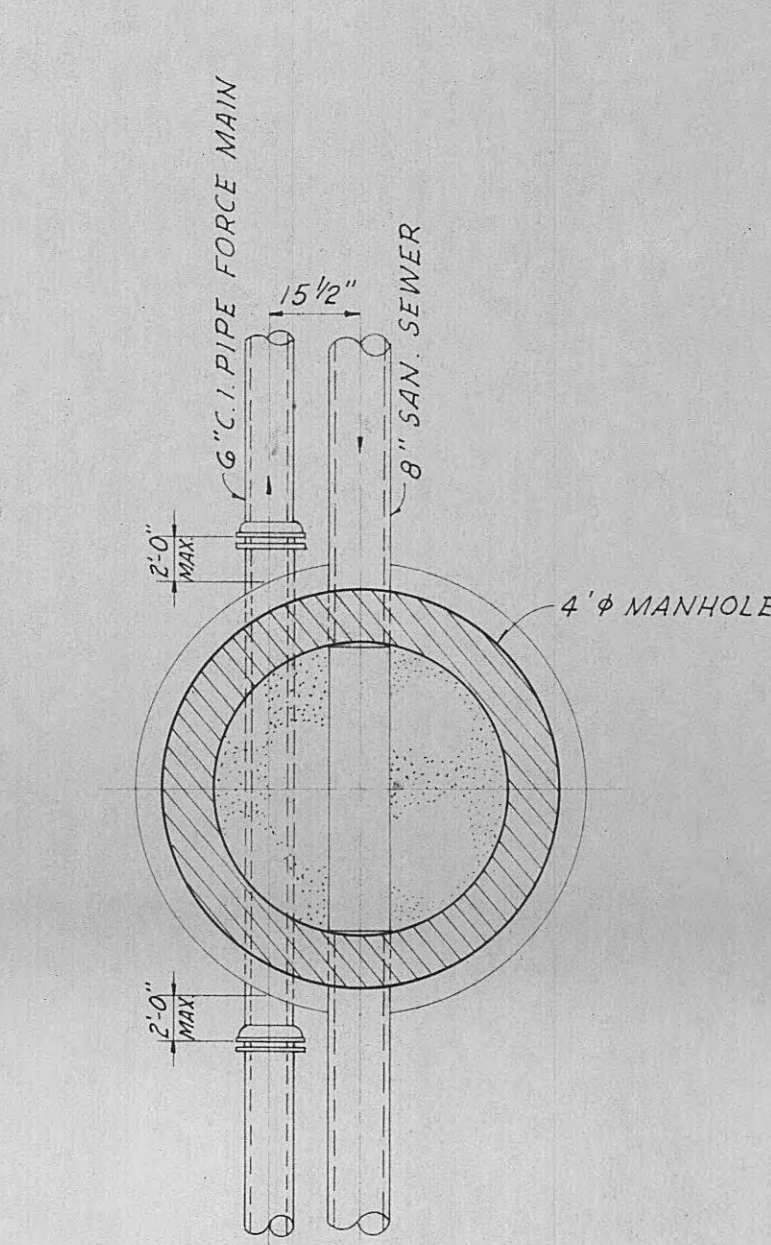
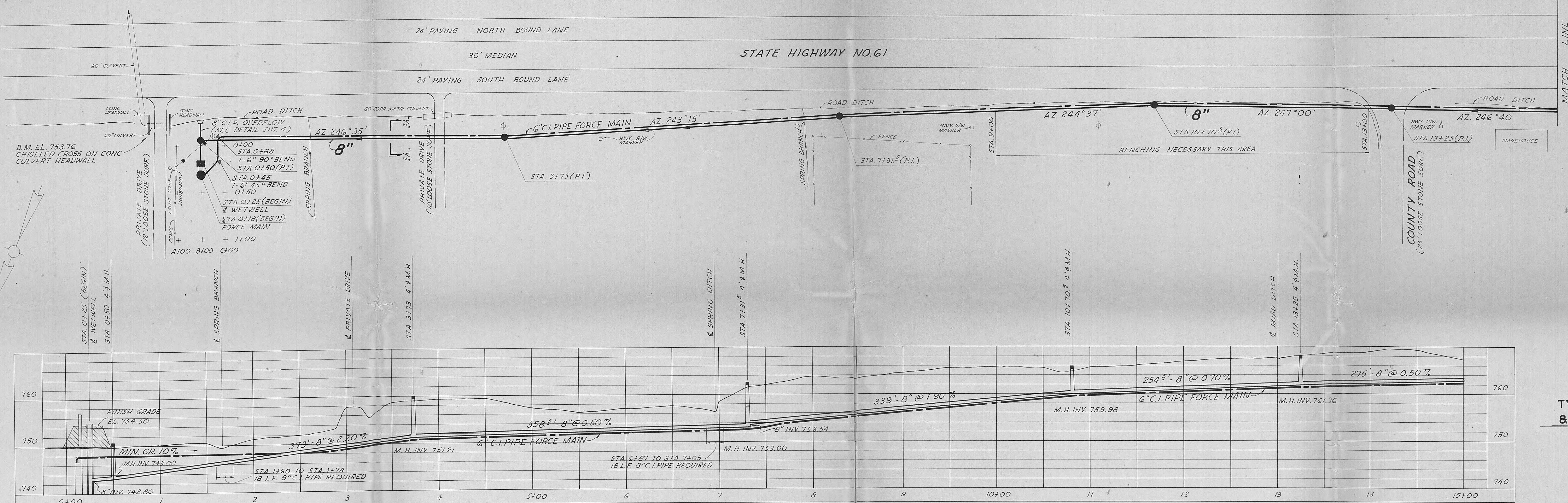
APPROVED
MAY 26 1970
TENNESSEE DEPARTMENT OF PUBLIC HEALTH
DIVISION OF SANITARY ENGINEERING
BY *Julian Fleming* DIRECTOR

FOR APPROVAL

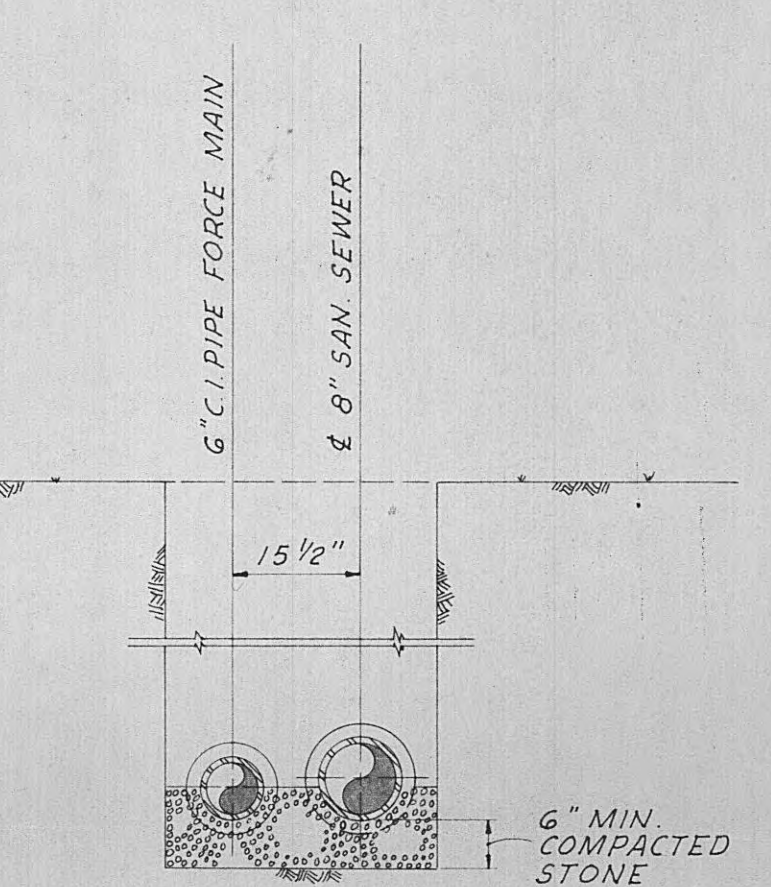
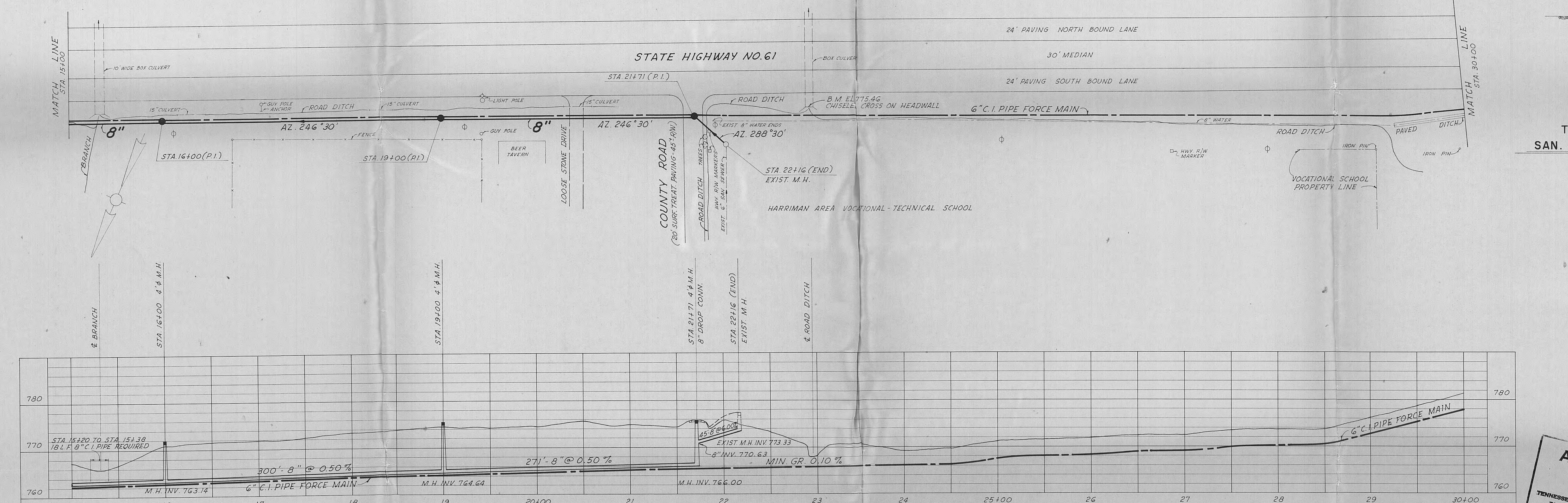
CITY OF HARRIMAN, TENNESSEE
SEWERAGE SYSTEM IMPROVEMENTS
VOCATIONAL-TECHNICAL SCHOOL AREA

LOCATION MAP

SCALE 1" = 800'	WIEDEMAN AND SINGLETON ENGINEERS	SH
DATE APRIL, 1970	ATLANTA GEORGIA	OF



TYPICAL DETAIL OF FORCE MAIN & SAN. SEWER FOR MANHOLES
SCALE: 3/8" = 1' - 0"

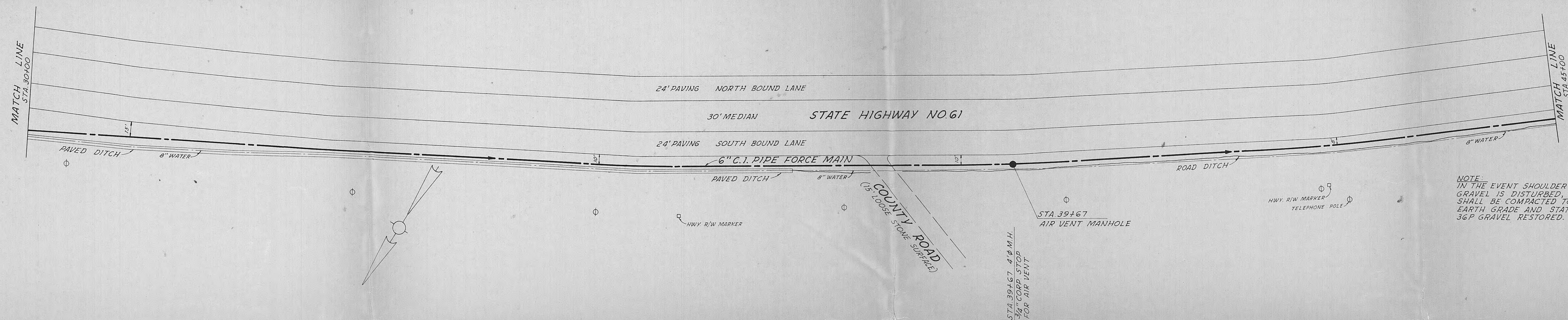


TYPICAL SECTION "Y-Y"
SAN. SEWER & FORCE MAIN BEDDING
SCALE: 1/2" = 1' - 0"

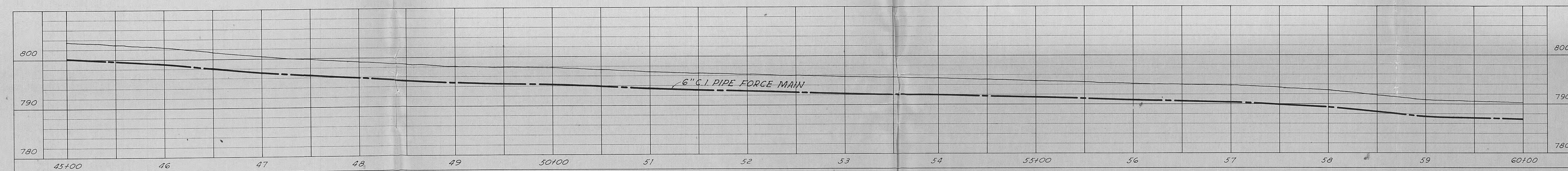
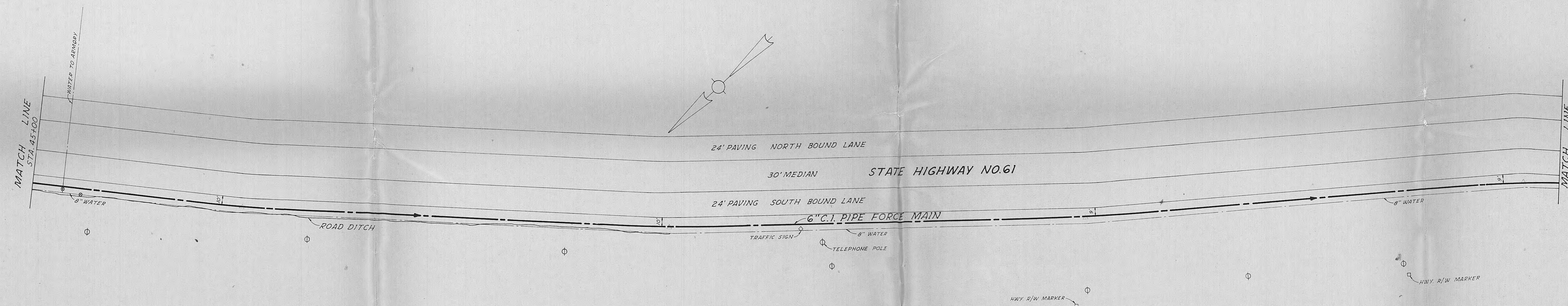
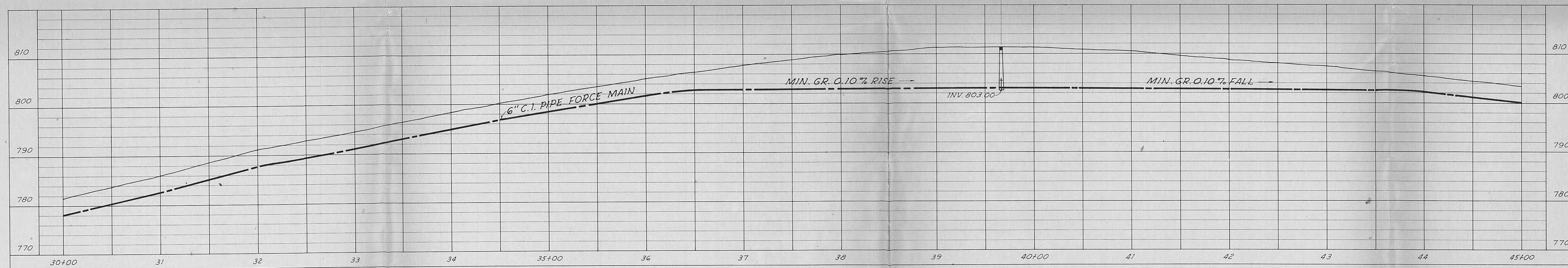
2148 @ 3.90 8377.20
10 MIT 2980.00
10 Rings 456.00
2148' 6" Cont 2224.20
8036.40

APPROVED
MAY 26 1970
TENNESSEE DEPARTMENT OF PUBLIC HEALTH
DIVISION OF SANITARY ENGINEERING
BY _____ DIRECTOR

CITY OF HARRIMAN, TENNESSEE
SEWERAGE SYSTEM IMPROVEMENTS
VOCATIONAL-TECHNICAL SCHOOL AREA
PLAN & PROFILE
8" SANITARY SEWER (BEGIN STA 0+25 TO STA 22+16)
6" FORCE MAIN (BEGIN STA 0+18 TO STA 30+00)
SCALE
1"=60' HORIZ
1"=10' VERT
DATE
APRIL, 1970
WIEDEMAN AND SINGLETON
ENGINEERS
ATLANTA GEORGIA
SHEET
2
OF



NOTE:
IN THE EVENT SHOULDER DRAINAGE
GRAVEL IS DISTURBED, THE DITCH
SHALL BE COMPACTED TO ORIGINAL
EARTH GRADE AND STATE SPECIFICATION
36P GRAVEL RESTORED.



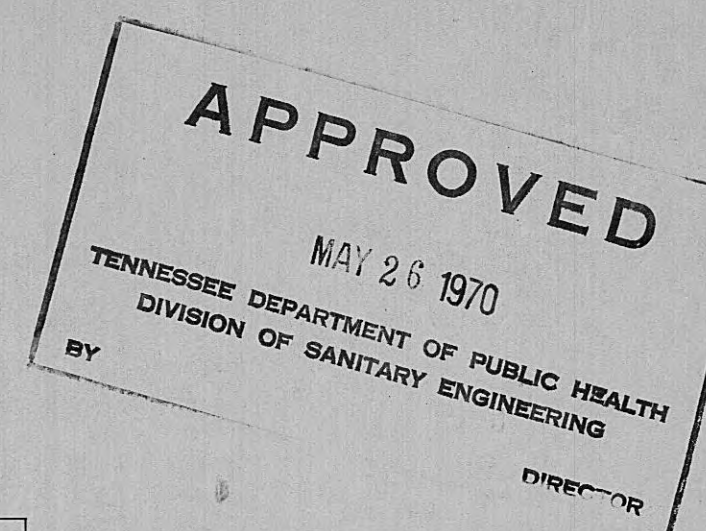
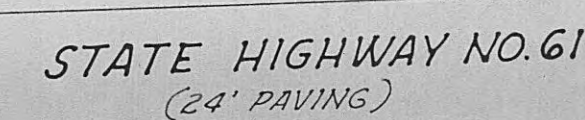
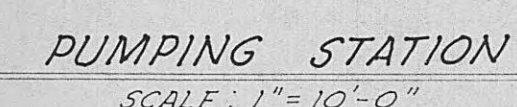
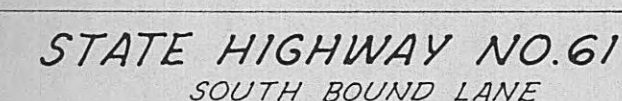
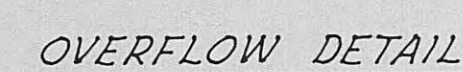
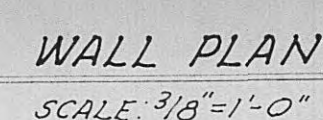
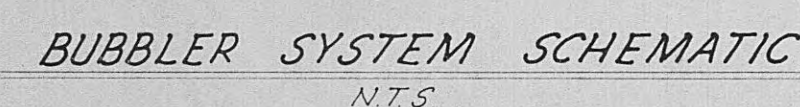
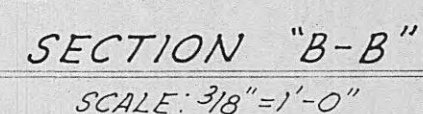
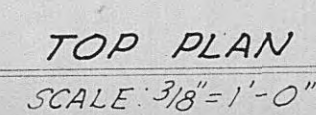
APPROVED
MAY 26 1970
TENNESSEE DEPARTMENT OF PUBLIC HEALTH
DIVISION OF SANITARY ENGINEERING
BY

CITY OF HARRIMAN, TENNESSEE
SEWERAGE SYSTEM IMPROVEMENTS
VOCATIONAL - TECHNICAL SCHOOL AREA

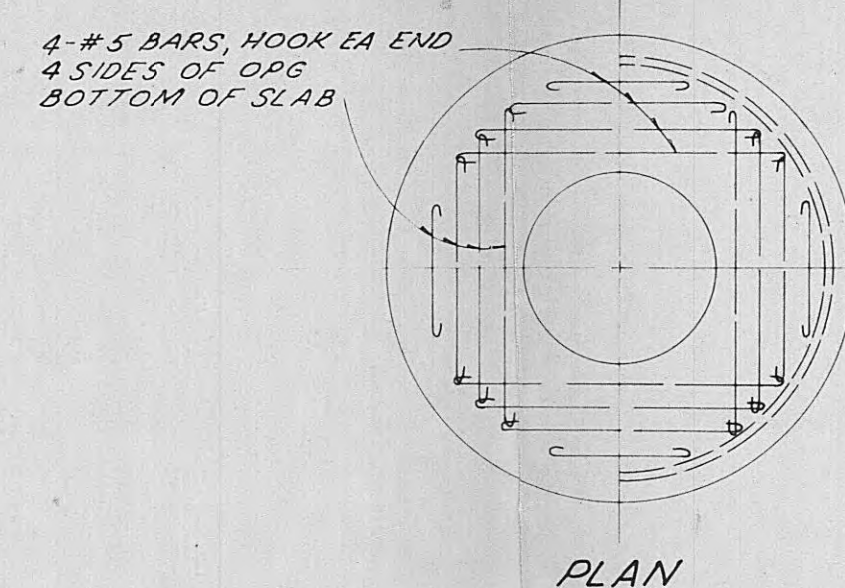
PLAN & PROFILE

6" FORCE MAIN STA 30+00 TO STA 60+00

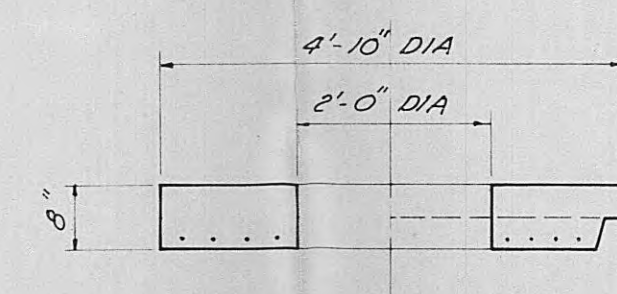
SCALE 1"=50' HORIZ 1"=10' VERT DATE APRIL, 1970	WIEDEMAN AND SINGLETON ENGINEERS ATLANTA GEORGIA	SHEET 3 OF 5
---	--	---------------------------



GOVERNING DIMENSIONS FOR CIRCULAR MANHOLES			
PIPE SIZE	DEFLECTION	M.H. DIA.	"Y"
8" - 15"	0° - 90°	4' - 0"	1' - 10"

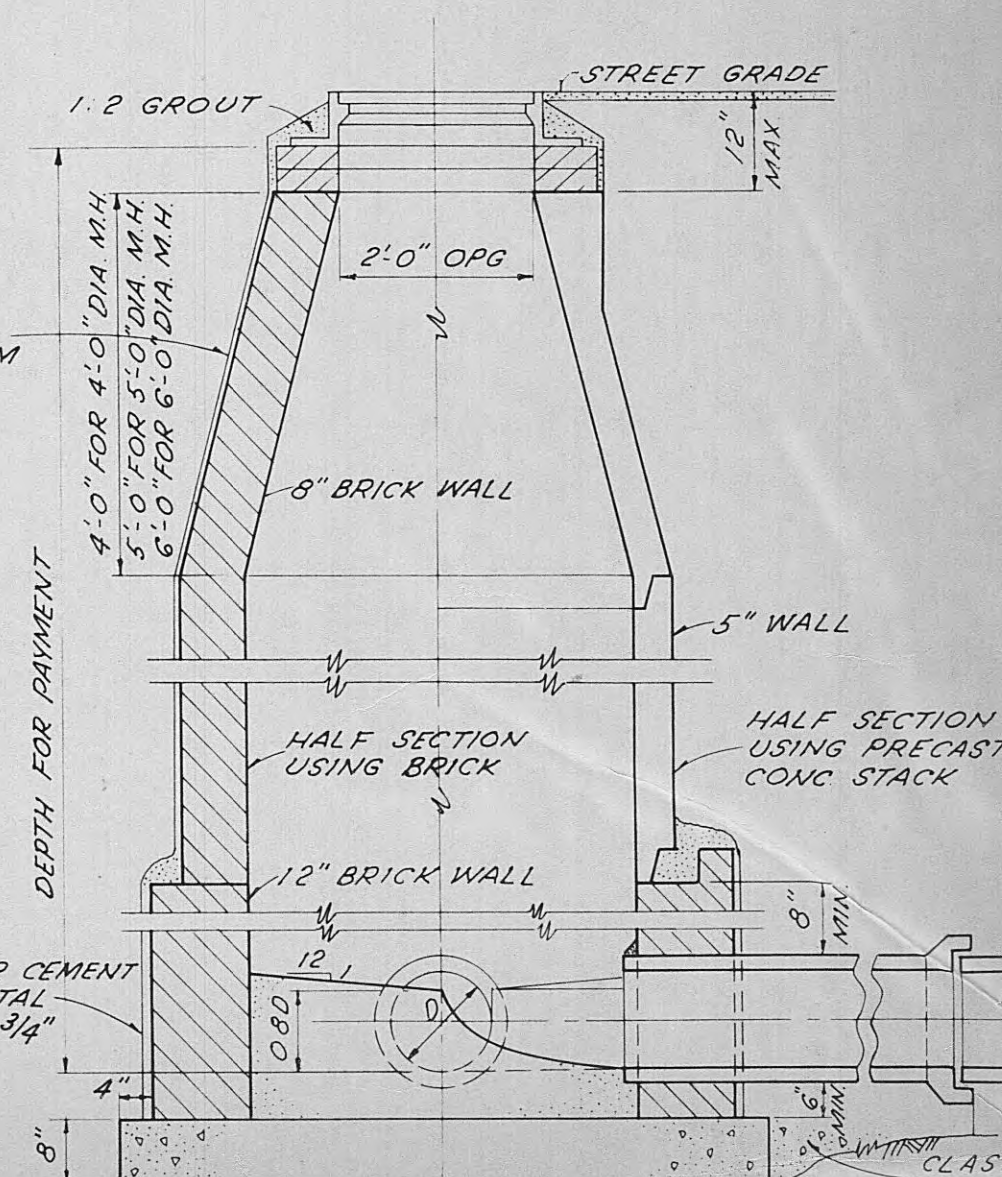


PLAN



SECTION
4'-0" COVER SLAB
SCALE: 1/2"=1'-0"

WATERPROOFING - 1 COAT OF INERTOL STANDARD THICK AT THE RATE OF 1 GALLON PER 125 SQ. FT. WATERPROOF WALLS FROM 18" BELOW FINISH GRADE DOWN TO AND OVER FOOTINGS

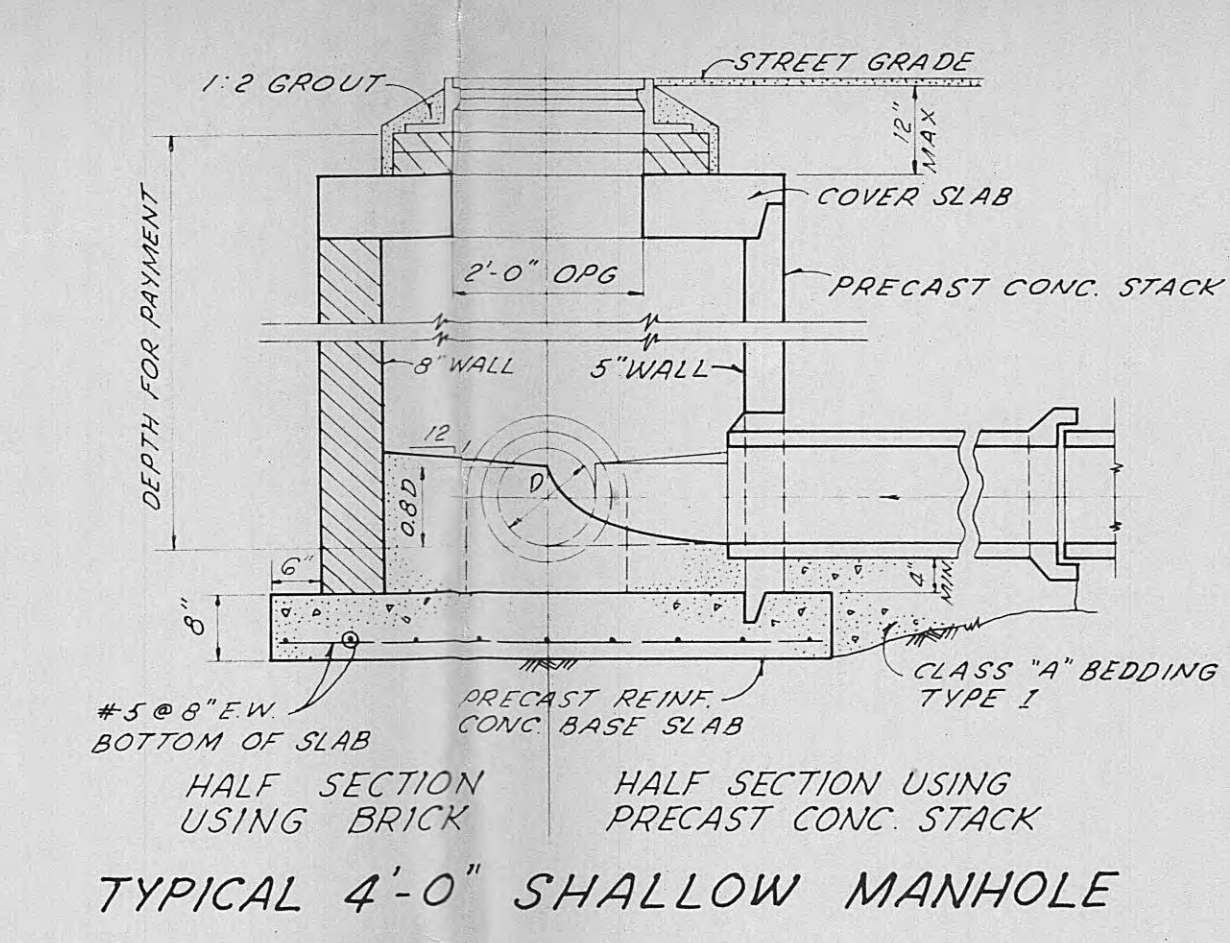
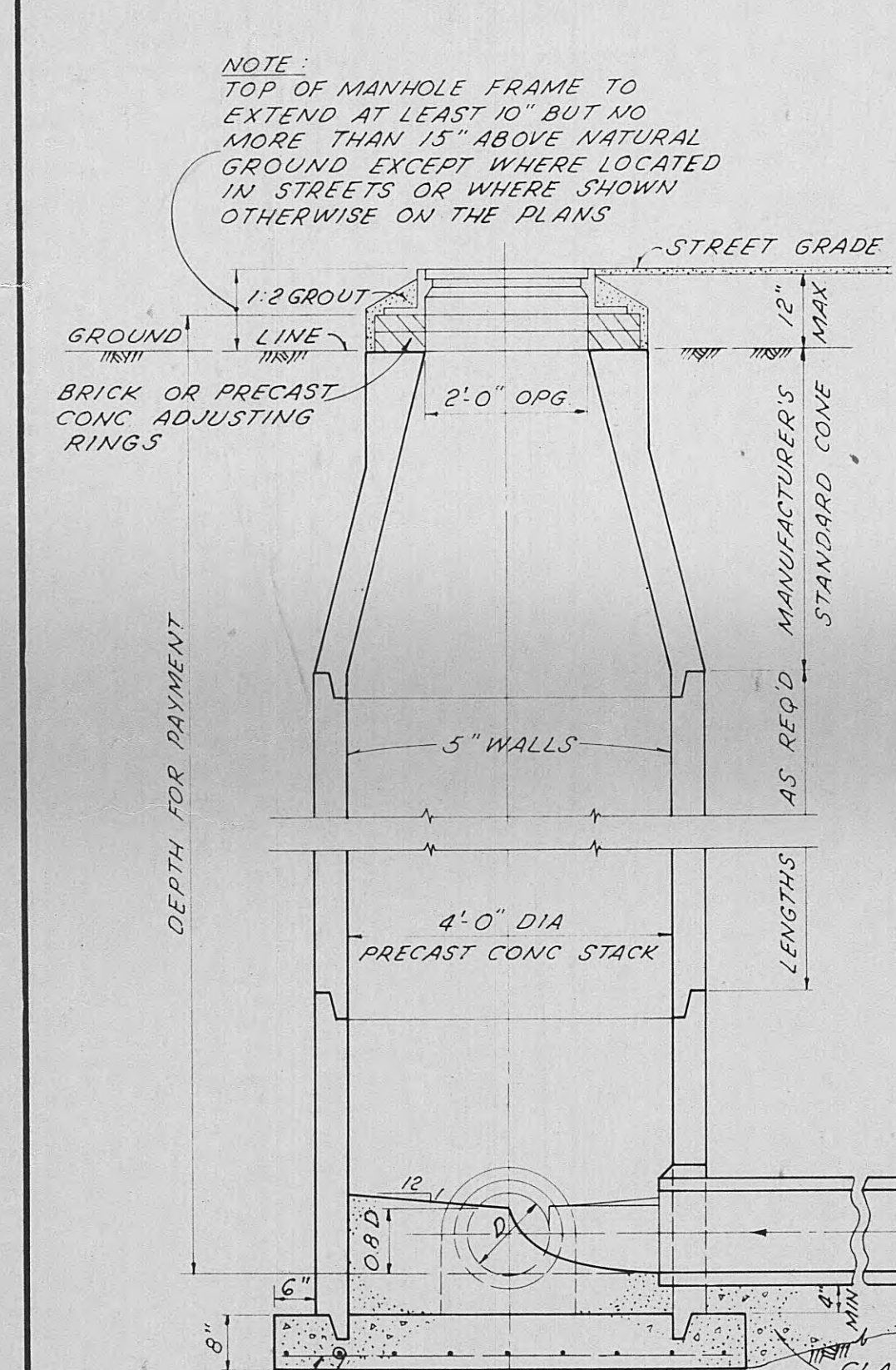


SECTION
4', 5' OR 6' DIA. MANHOLE
(ALTERNATE CONSTRUCTION)
SCALE: 1/2"=1'-0"

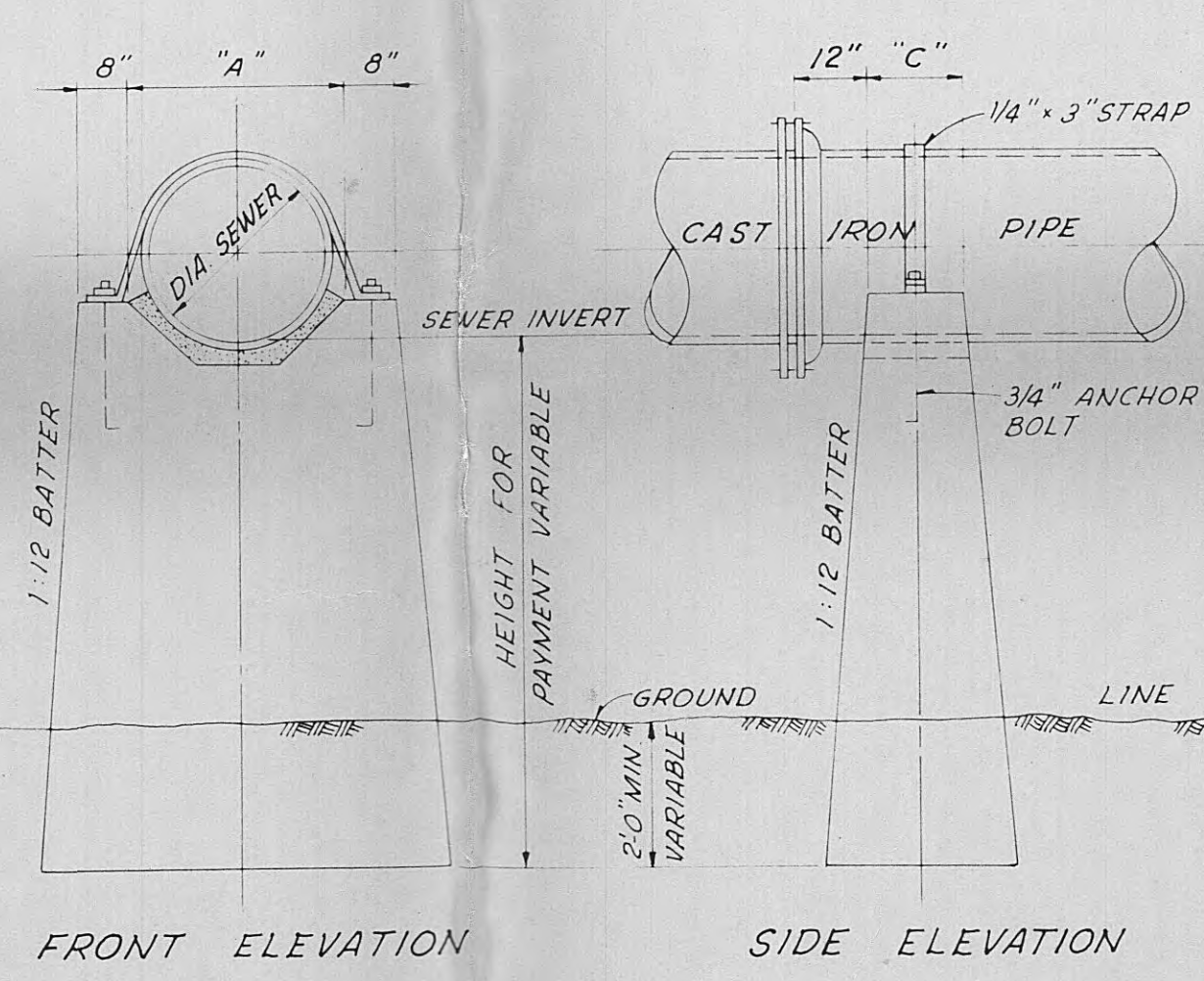
NOTE: 12" M.H. STEPS ARE USED. THEY SHALL BE INSTALLED @ 16" O.C. STAGGERED. CLOW F-3650 OR EQUAL.

C.I. MANHOLE STEP DETAIL
N.T.S.

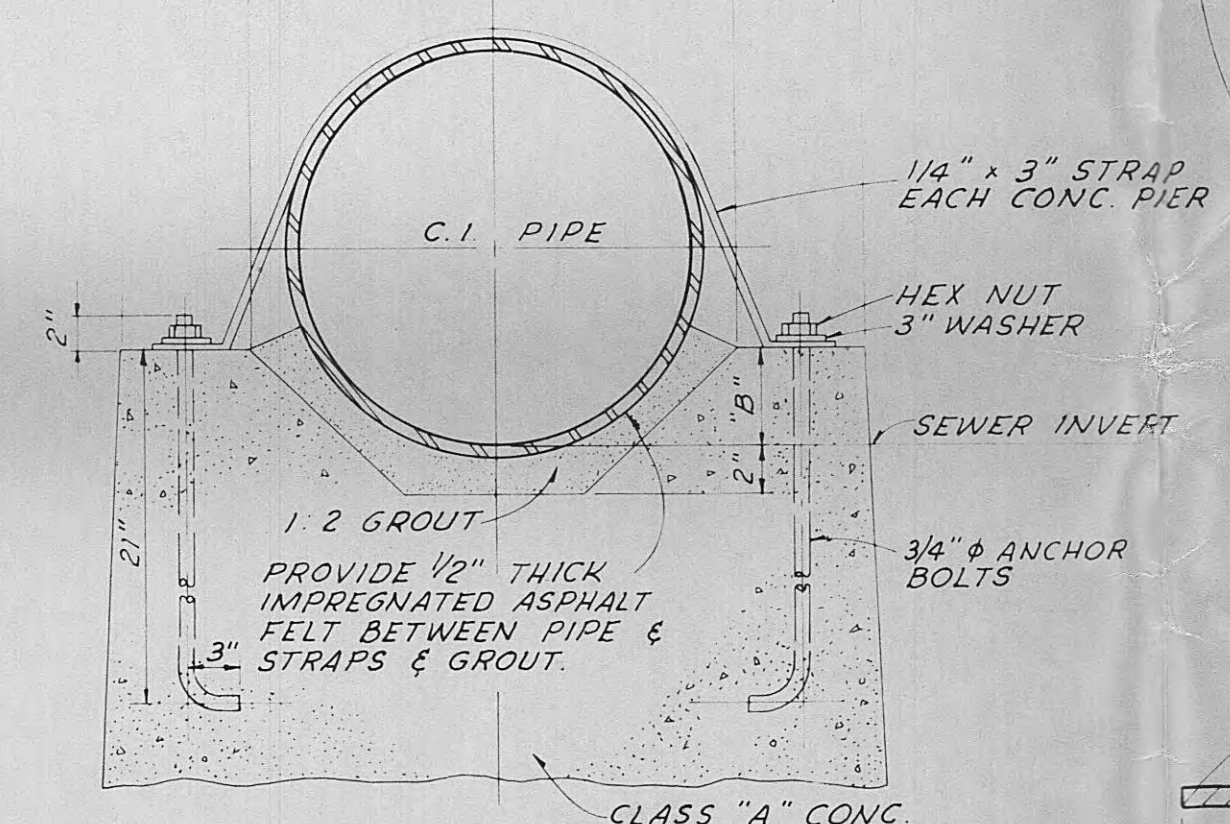
TYPICAL INVERT PLAN
(ALL SIZES)
SCALE: 1/2"=1'-0"



TYPICAL 4'-0" SHALLOW MANHOLE



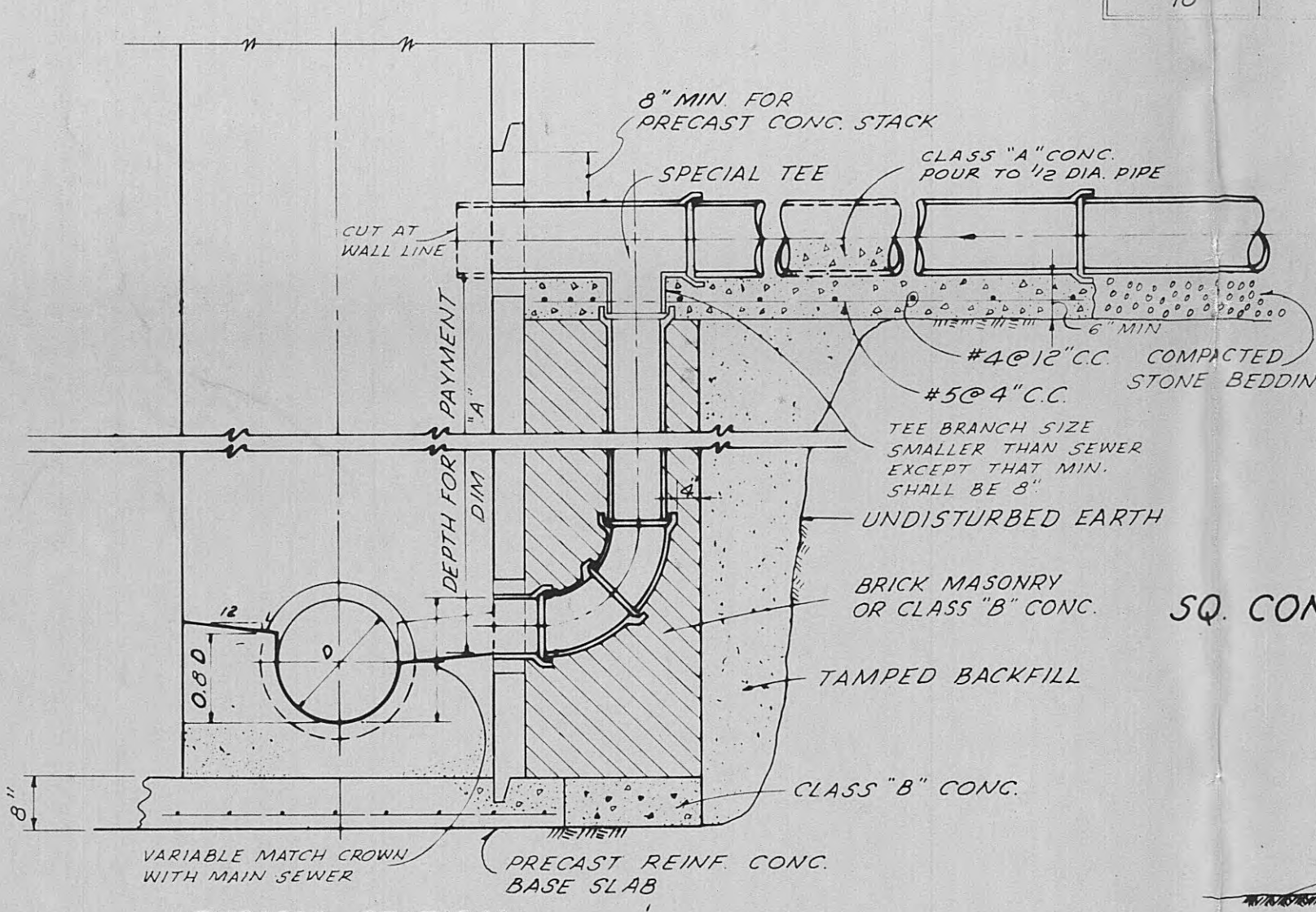
TYPICAL DETAIL OF C.I. PIPE ON PIERS
N.T.S.



ENLARGED SECTION
SCALE: 1"=1'-0"

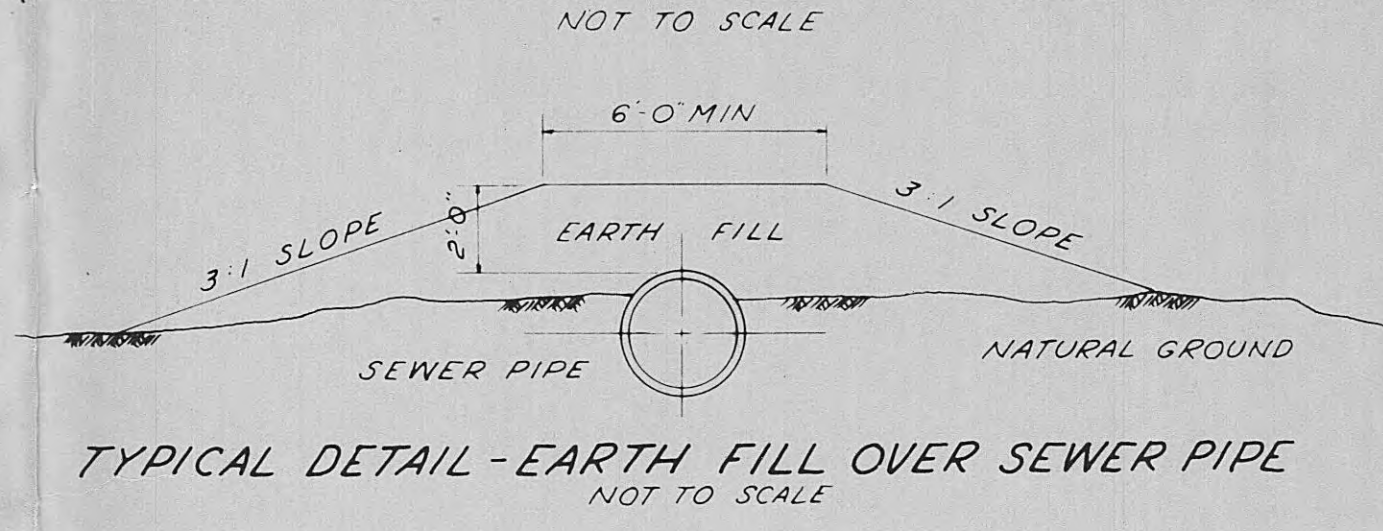
SCHEDULE FOR DROP CONNECTIONS DIA. 4"			
SEWER SIZE	DROP SIZE	MINIMUM INV. TO INV.	
8"	8"	24"	
10"	8"	24"	

GOVERNING DIMENSIONS FOR CONCRETE PIERS			
I.D. PIPE	A	B	C
8"	11 1/2"	2"	8"
10"	13 1/2"	2 1/2"	10"
12"	15 1/2"	3"	10"
15"	19"	4"	11"

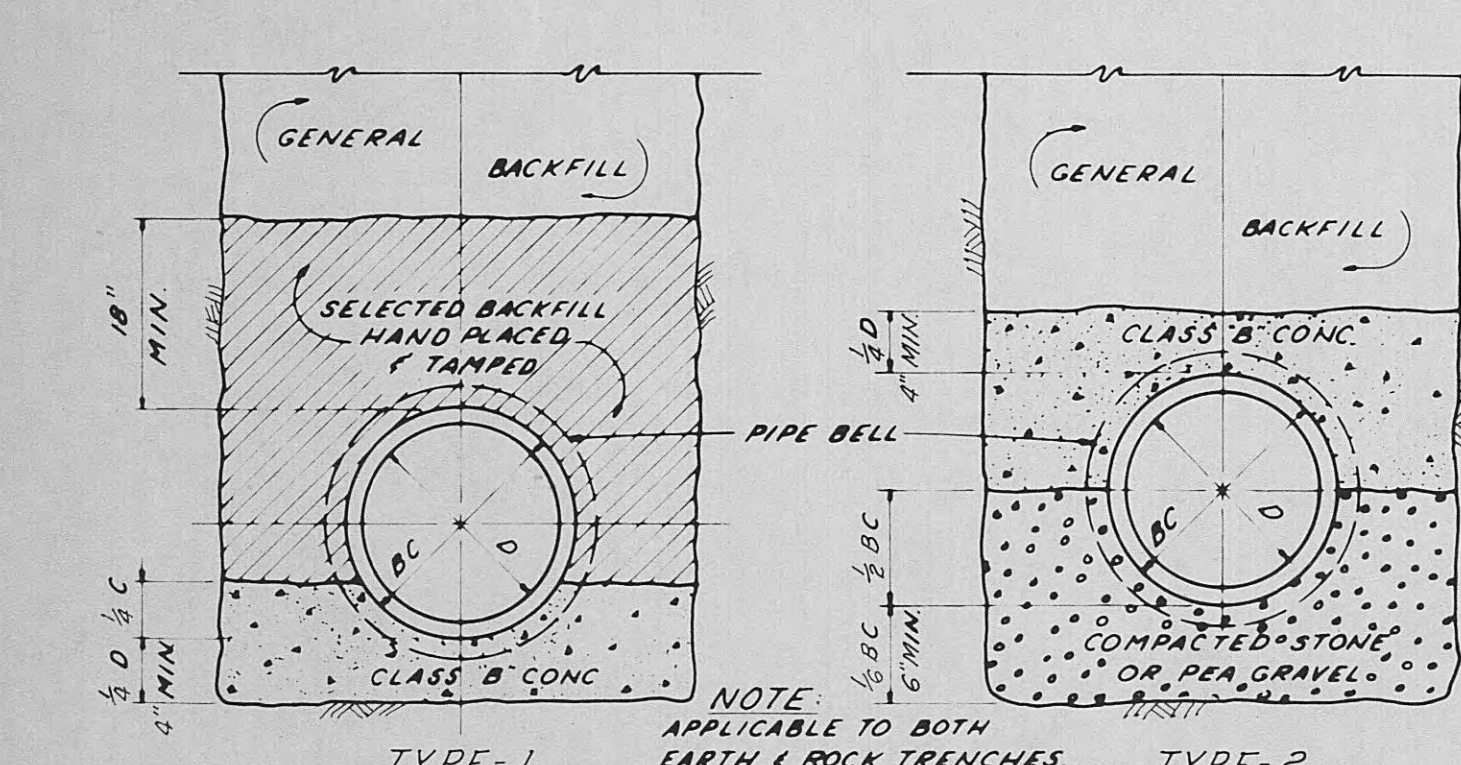


TYPICAL SECTION
MANHOLE DROP CONNECTION
SCALE: 1/2"=1'-0"

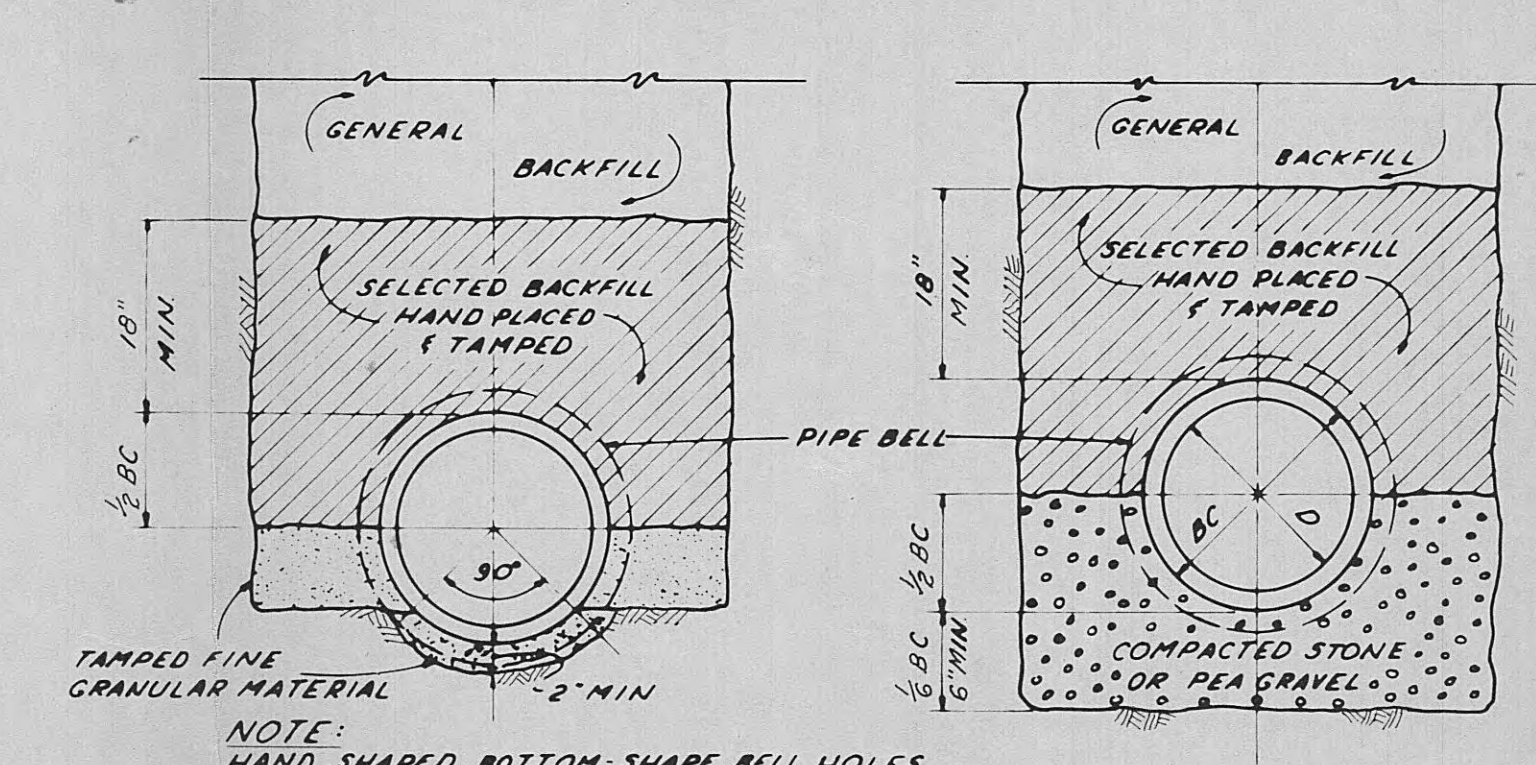
TYPICAL DETAILS
SQ. CONC. COLLAR FOR JOINTING C.I. PIPE TO SEWER PIPE
NOT TO SCALE



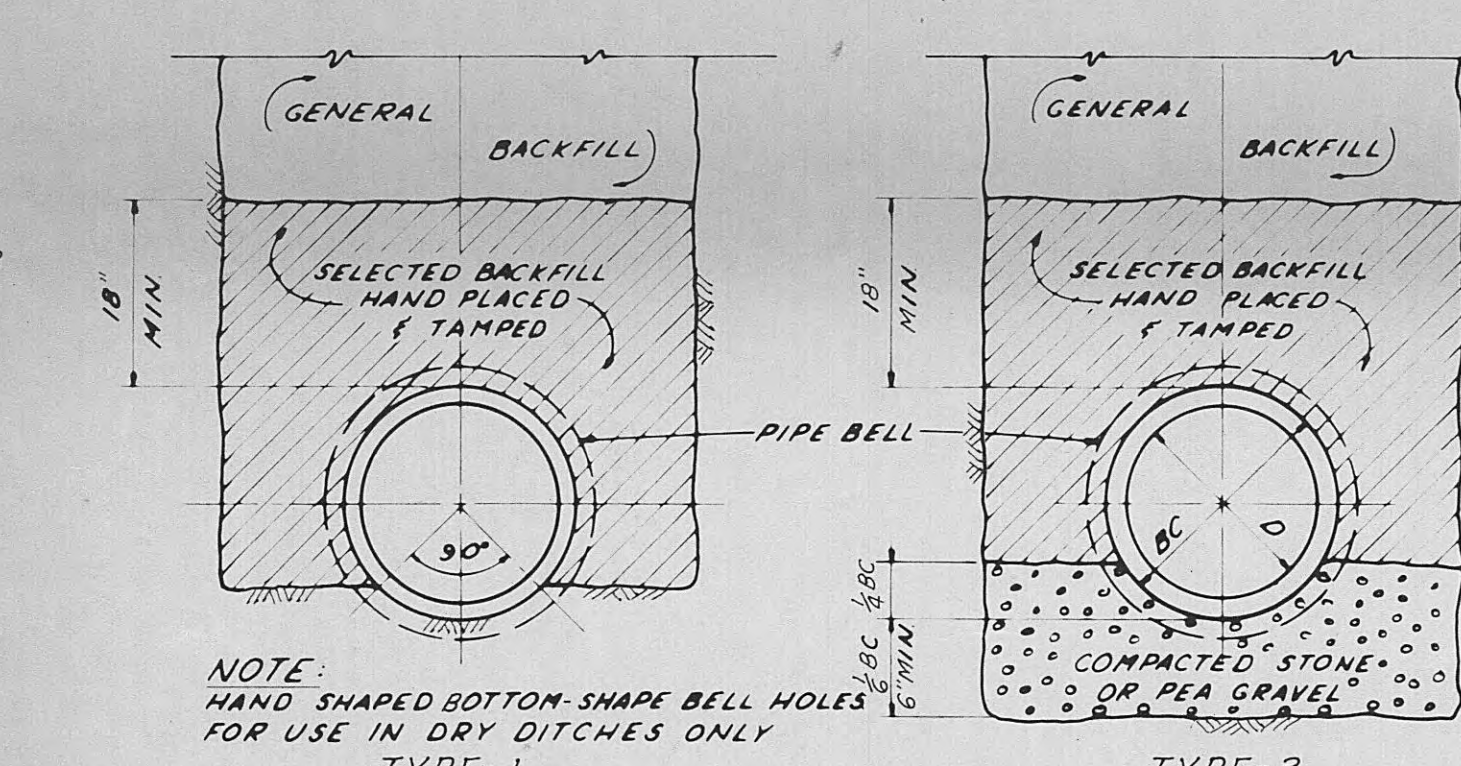
TYPICAL DETAIL - EARTH FILL OVER SEWER PIPE
NOT TO SCALE



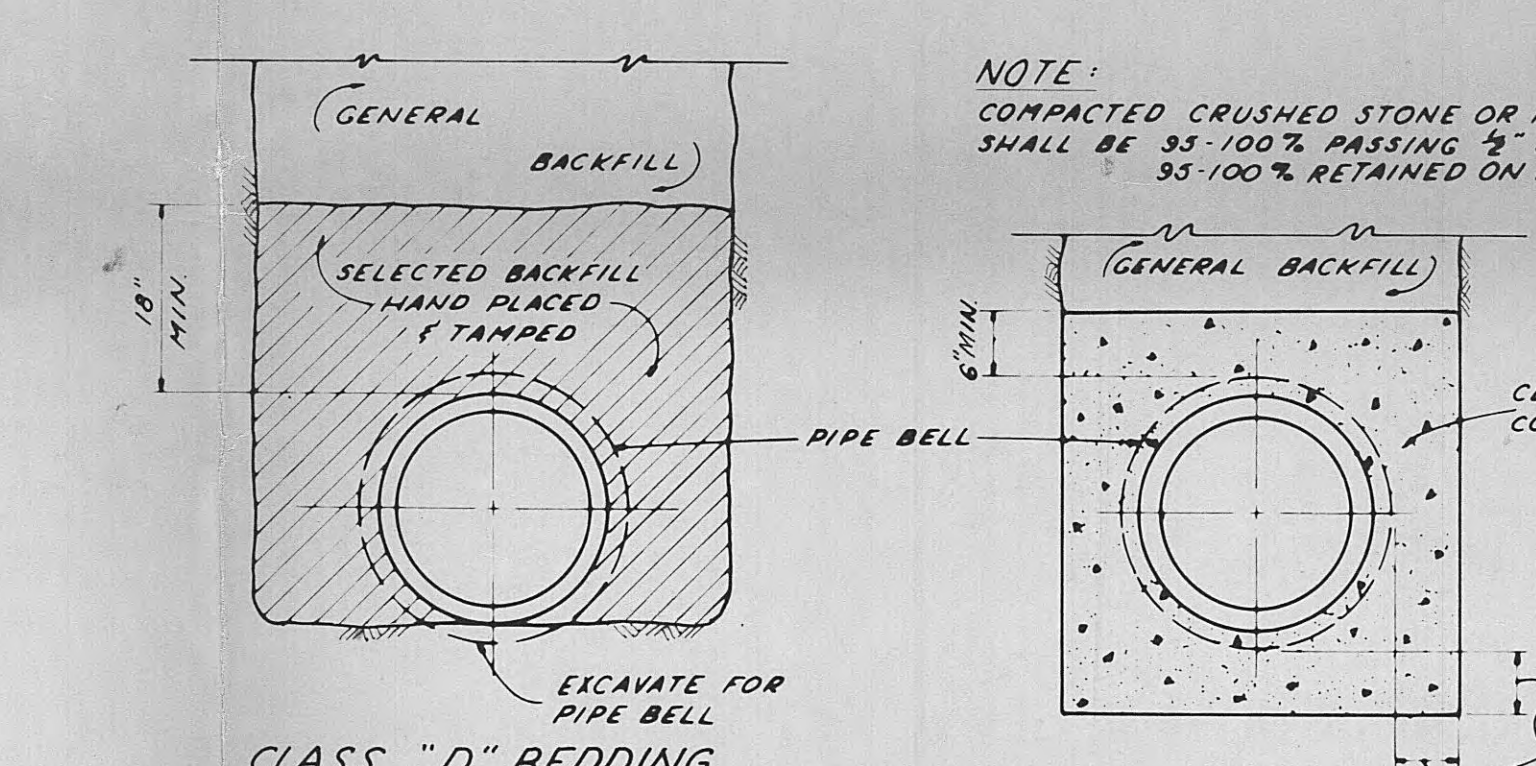
CLASS "A" BEDDING
USE EITHER TYPE



CLASS "B" BEDDING
USE EITHER TYPE

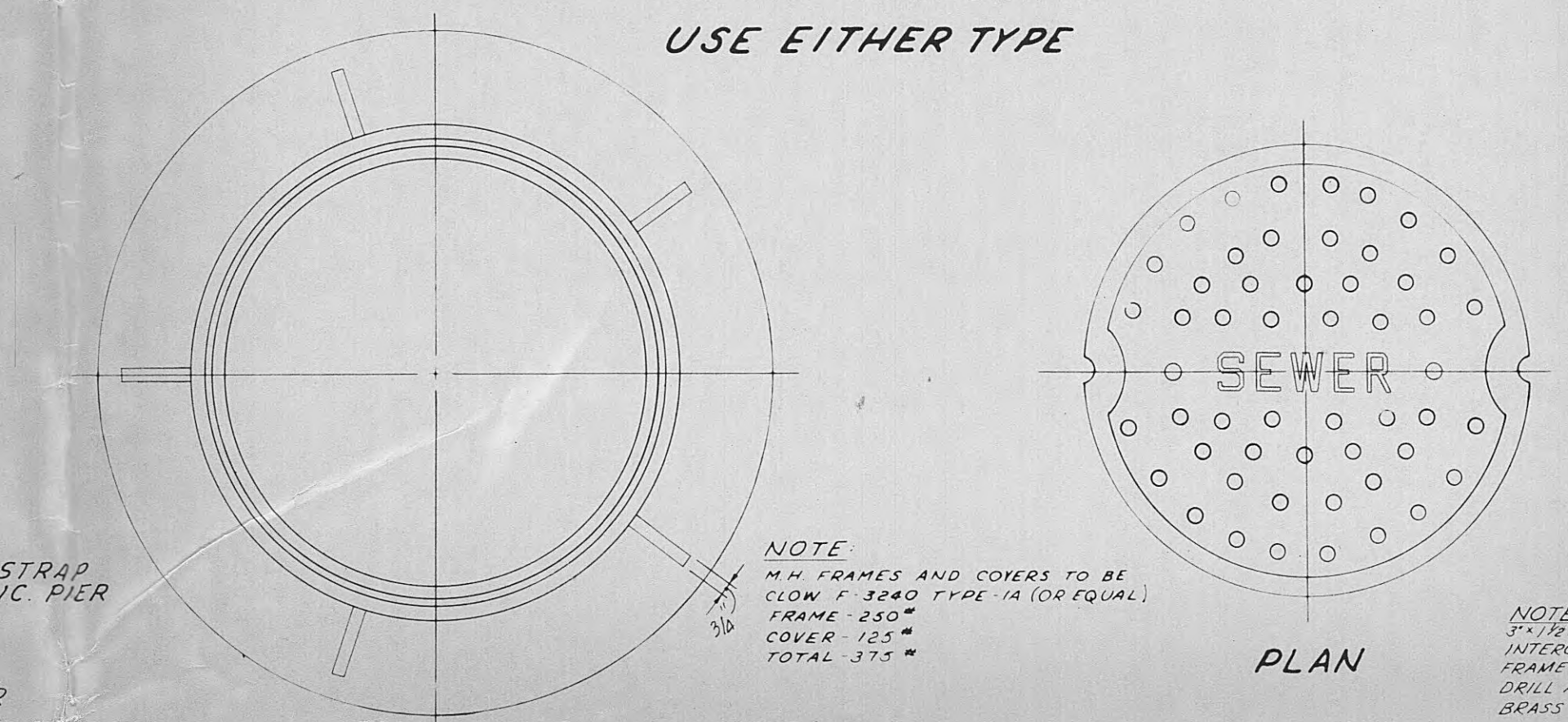


CLASS "C" BEDDING
USE EITHER TYPE

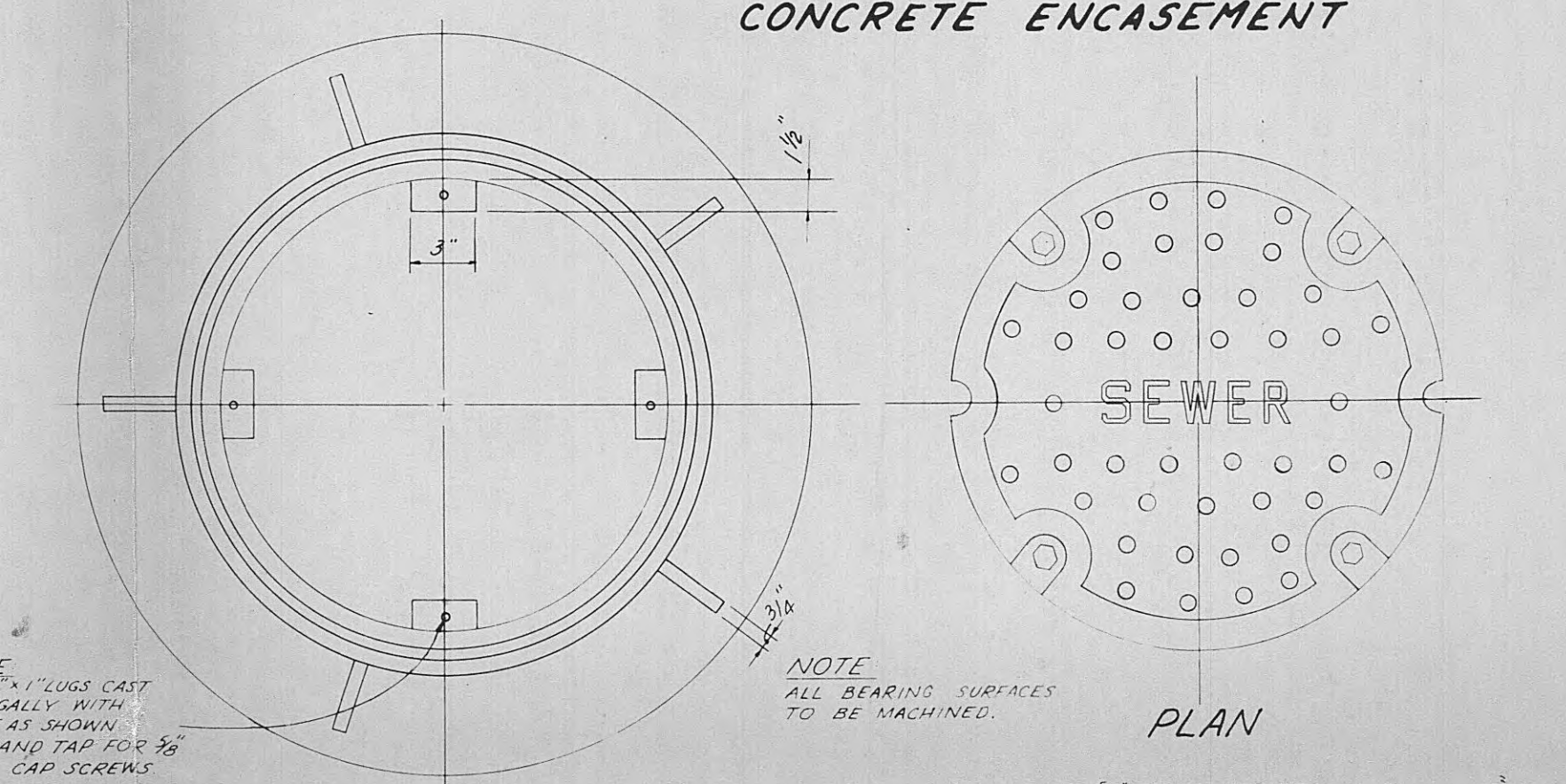


CLASS "D" BEDDING
USE EITHER TYPE

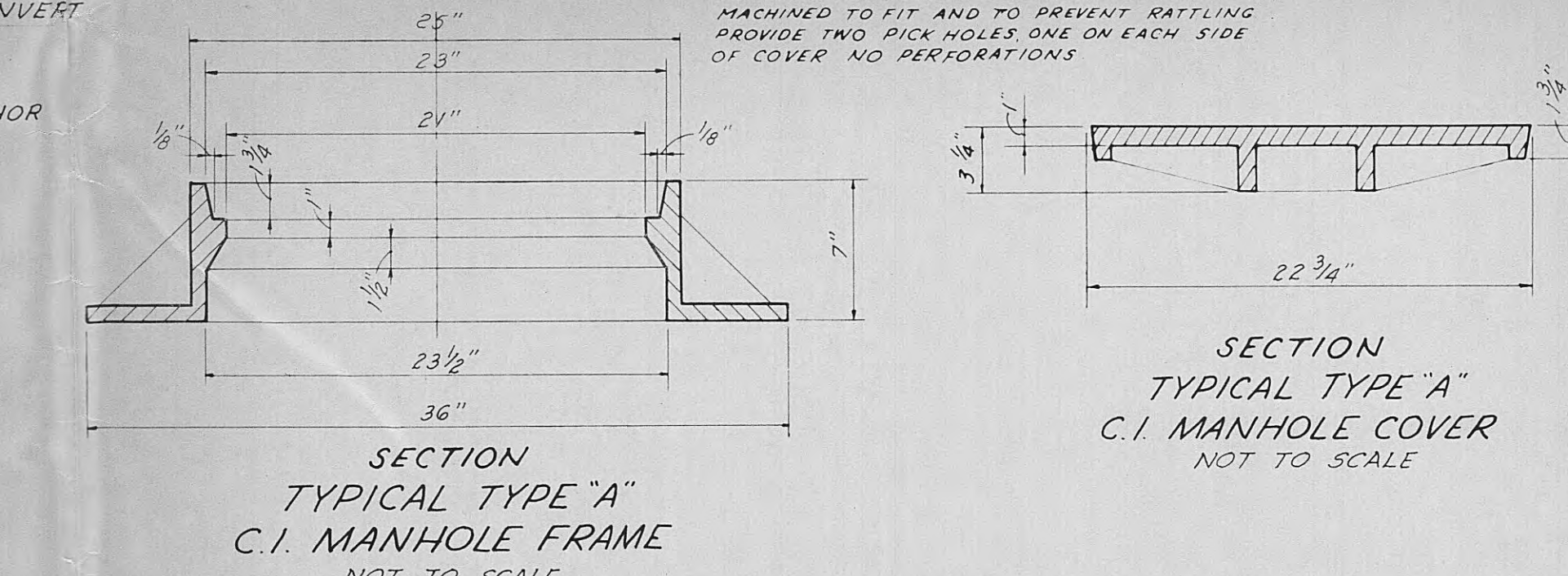
CONCRETE ENCASEMENT



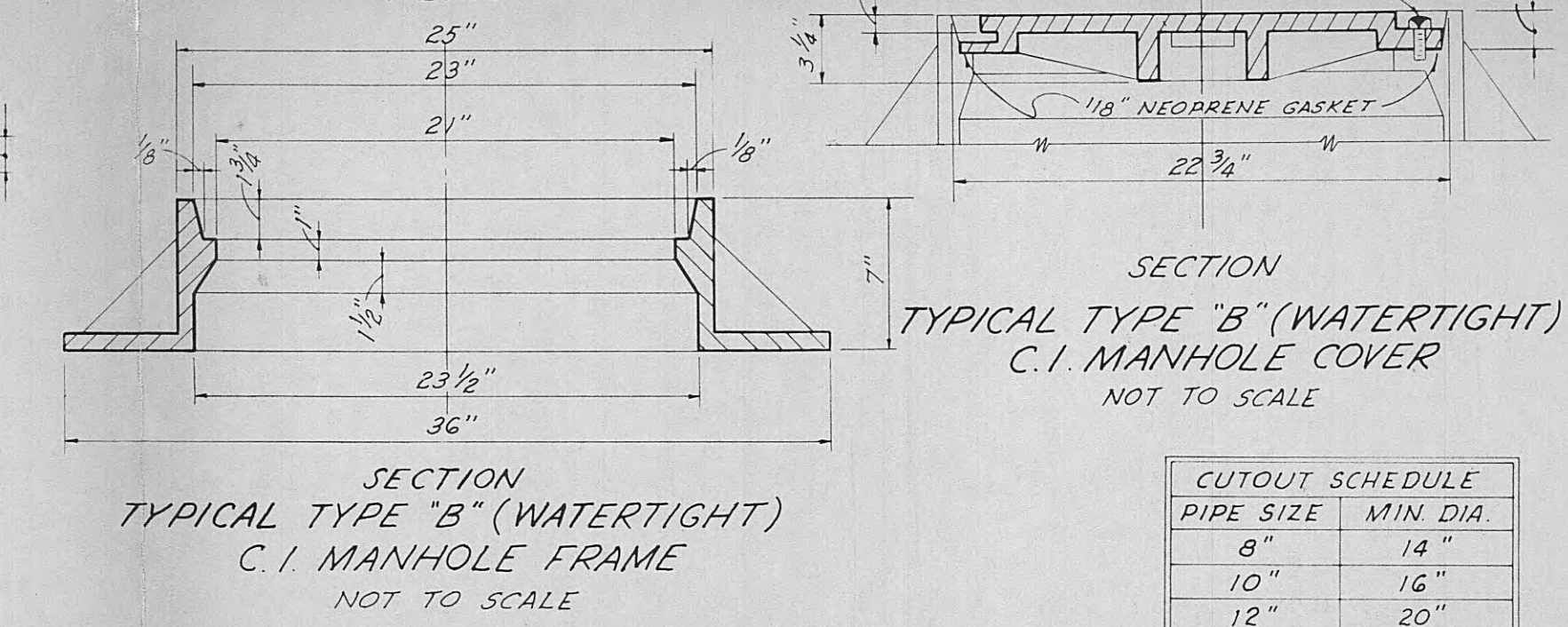
SECTION
TYPICAL TYPE "A"
C.I. MANHOLE FRAME
NOT TO SCALE



SECTION
TYPICAL TYPE "B" (WATERTIGHT)
C.I. MANHOLE FRAME
NOT TO SCALE

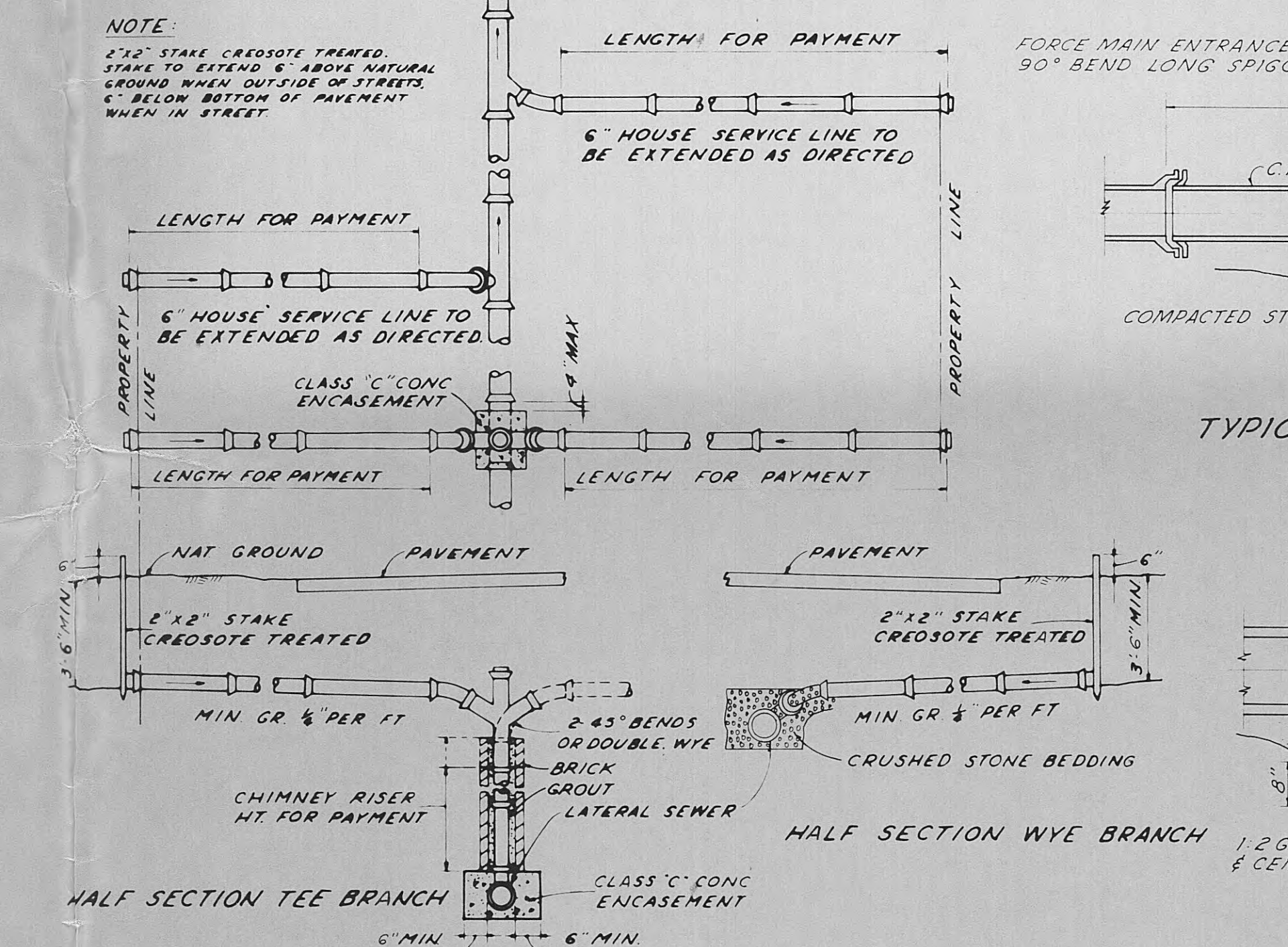


SECTION
TYPICAL TYPE "A"
C.I. MANHOLE COVER
NOT TO SCALE

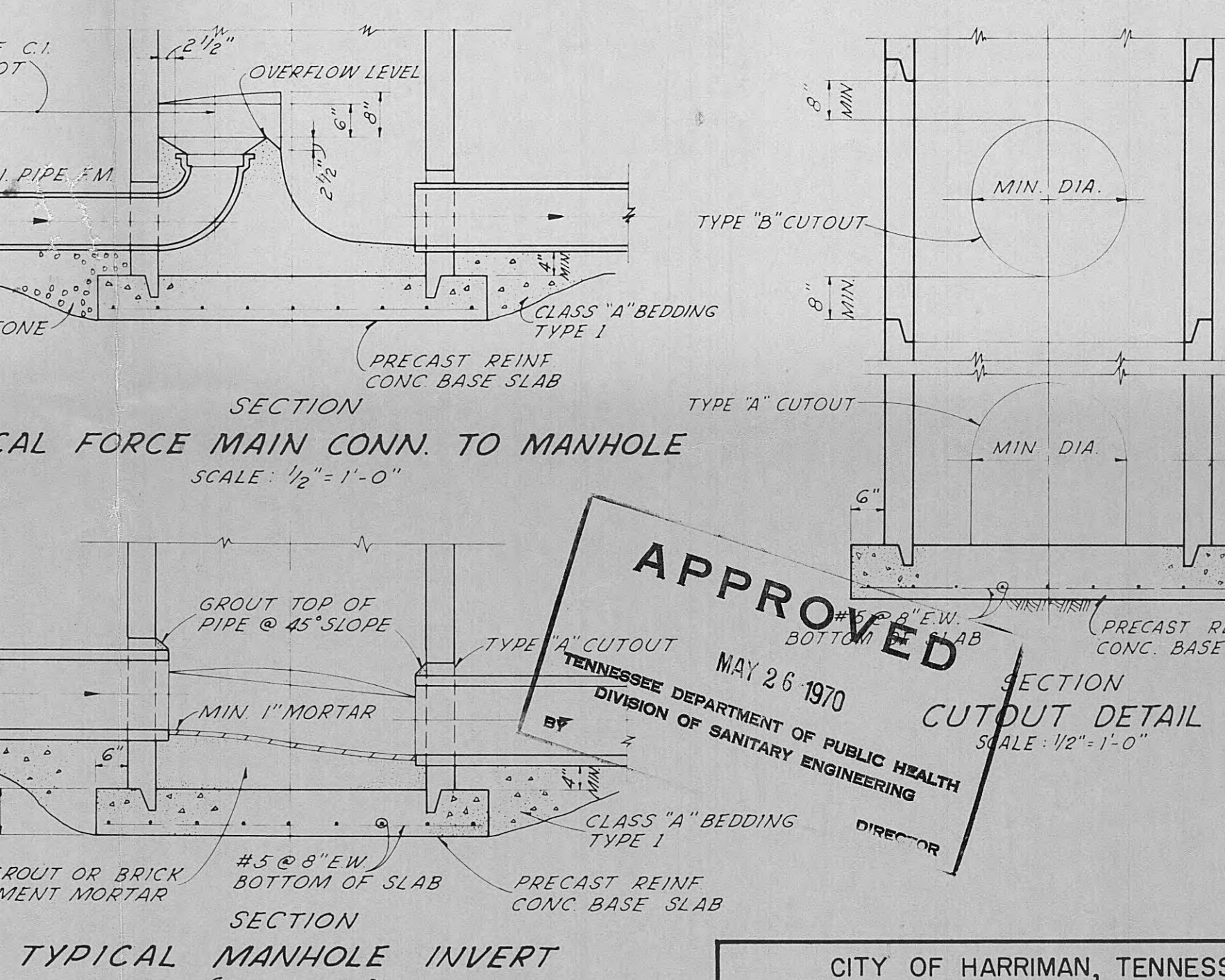


SECTION
TYPICAL TYPE "B" (WATERTIGHT)
C.I. MANHOLE COVER
NOT TO SCALE

CUTOUT SCHEDULE	
PIPE SIZE	MIN. DIA.
8"	14"
10"	16"
12"	20"
15"	24"

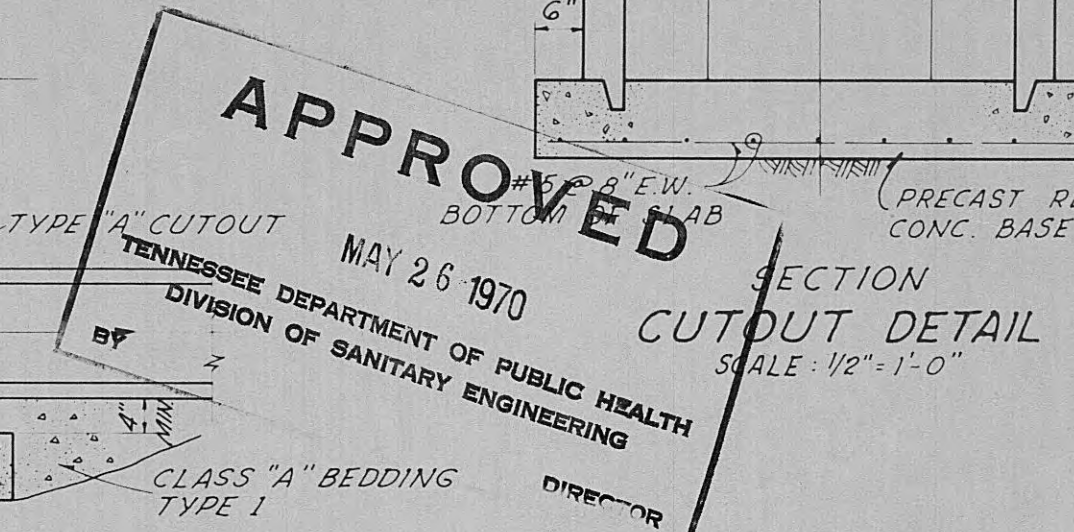


TYPICAL DETAILS OF SANITARY HOUSE SERVICE LINE
NOT TO SCALE



TYPICAL FORCE MAIN CONN. TO MANHOLE
SCALE: 1/2"=1'-0"

TYPICAL MANHOLE INVERT
(ALL SIZES)
SCALE: 1/2"=1'-0"



CITY OF HARRIMAN, TENNESSEE
SEWERAGE SYSTEM IMPROVEMENTS
VOCATIONAL - TECHNICAL SCHOOL AREA

MISCELLANEOUS DETAILS