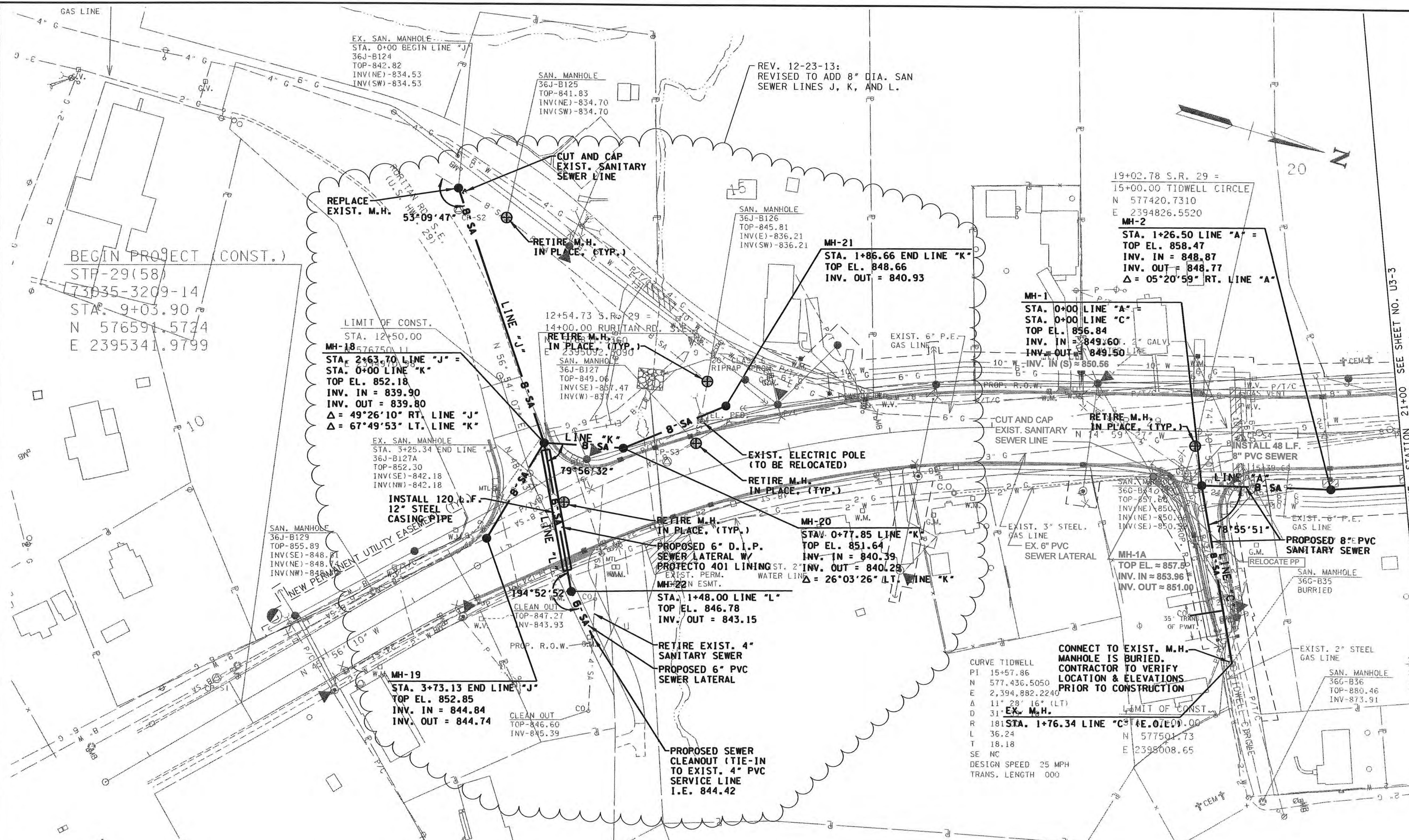


TYPE	YEAR	PROJECT NO.	SHEET NO.
CONST.	2014	STP-29(58)	U3-2
		73035-3209-14	

ROANE CO.

REV. 12-23-13:
REVISED TO ADD 8" DIA. SAN
SEWER LINES J, K, AND L.

REV. 9-25-15
ADDED MH-1A TO CONNECT 6"
DIA. PVC SEWER LATERAL.



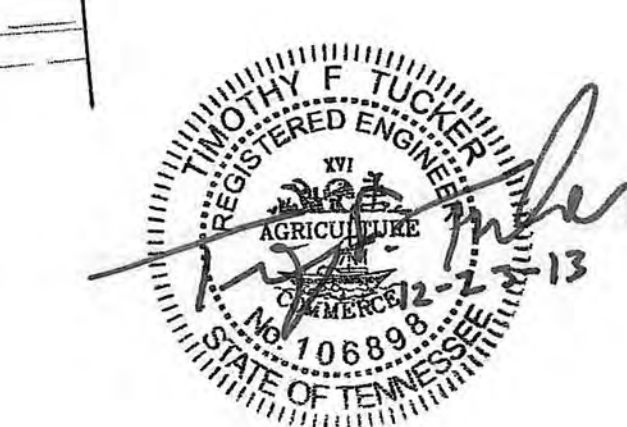
SEE SHEET NO. U3-3
MATCH LINE STATION 21+00

CONTROL POINTS COORDINATE LIST

POINT	NORTHING	EASTING	ELEVATION	DESCRIPTION
CP- S1	576561.6641	2395325.6611	862.1500	GPS 73-029-03
CP- S2	576663.4159	2394818.5709	845.0000	GPS 73-029-04
CP- S3	576927.8931	2394999.9085	852.3500	GPS 73-029-05
CP- S4	577462.5819	2394822.2858	857.0900	GPS 73-029-06
CP- S5	577802.7604	2394685.3779	857.9600	GPS 73-029-07
CP- S6	578259.2949	2394478.2930	839.7300	GPS 73-029-08
CP- S7	578865.0073	2394344.9819	849.1900	GPS 73-029-09
CP- S8	579425.3815	2394241.1029	864.2000	GPS 73-029-10
CP- S9	580060.2802	2394271.7045	877.3200	GPS 73-029-11
CP- S10	580653.5569	2394170.8954	881.3500	GPS 73-029-12

- NOTE:
- CONTRACTOR TO VERIFY LOCATION AND ELEVATION OF PRIVATE SEWER LATERALS PRIOR TO CONSTRUCTION TO ENSURE PROPER GRADE & LOCATION OF SEWER LATERAL EXTENSION TO PROPOSED SEWER MAIN.
 - 40 L.F. SHALL BE CONTINUOUS OR WELDED. MIN. YIELD STRENGTH 42,000 PSI.

REVISIONS BY JOHN KING, PE,
CTI ENGINEERS, INC.



HARRIMAN
UTILITY
BOARD

SANITARY
SEWER LINE
RELOCATION

BEGIN PROJ. TO STA. 21+00.00
SCALE: 1"=50'



TENNESSEE D.O.T.
DESIGN DIVISION
FILE NO.

INDEX OF DRAWINGS

SHT. NUMBER

SHT. NAME

U3-1 ESTIMATED QUANTITIES (SEWER)

U3-2 UTILITY RELOCATION PLAN (SEWER)

U3-3 UTILITY RELOCATION PLAN (SEWER)

U3-4 UTILITY RELOCATION PLAN (SEWER)

U3-5 UTILITY RELOCATION PLAN (SEWER)

U3-6 UTILITY RELOCATION PLAN (SEWER)

U3-7 UTILITY RELOCATION PROFILE (SEWER)

U3-8 UTILITY RELOCATION PROFILE (SEWER)

U3-9 UTILITY RELOCATION PROFILE (SEWER)

U3-10 TYPICAL SEWER DETAILS

REV. 12-23-13:
REVISED QUANTITIES TO ADD 8"
DIA. SANITARY SEWER LINES J,
K, AND L, 12" STEEL CASING,
REFLECT MATERIAL CHANGES 6",
8", AND 12" PVC TO DIP.

NOTES

ITEM NO.	DESCRIPTION	UNIT	TOTAL QUANTITY	PERCENT UTILITY	PERCENT PROJECT
① 797-01.15	10IN EPOXY COATED DIP FORCE MAIN	L.F.	45	0%	100%
① 797-05.01	8IN DIP GRAVITY SEWER 0FT-6FT DEPTH	L.F.	30	0%	100%
① 797-05.02	8IN DIP GRAVITY SEWER 6FT-12FT DEPTH	L.F.	230	0%	100%
① 797-05.03	8IN DIP GRAVITY SEWER 12FT-18FT DEPTH	L.F.	105	0%	100%
① 797-05.09	12IN DIP GRAVITY SEWER 0FT-6FT DEPTH	L.F.	45	3.7%	96.3%
① 797-05.10	12IN DIP GRAVITY SEWER 6FT-12FT DEPTH	L.F.	800	7.3%	92.7%
① 797-05.11	12IN DIP GRAVITY SEWER 12FT-18FT DEPTH	L.F.	165	12.5%	87.5%
① 797-05.41	6IN DIP SERVICE LATERAL	L.F.	730	0%	100%
① 797-05.51	8IN PVC GRAVITY SEWER 0FT-6FT DEPTH	L.F.	35	0%	100%
① 797-05.52	8IN PVC GRAVITY SEWER 6FT-12FT DEPTH	L.F.	1920	0%	100%
① 797-05.53	8IN PVC GRAVITY SEWER 12FT-18FT DEPTH	L.F.	515	0%	100%
① 797-05.60	12IN PVC GRAVITY SEWER 6FT-12FT DEPTH	L.F.	170	6.8%	93.2%
② 797-05.62	BORE/JACK 12IN STEEL CASING PIPE-UNCON.	L.F.	195	0%	100%
② 797-05.64	BORE/JACK 16IN STEEL CASING PIPE-UNCON.	L.F.	110	0%	100%
② 797-06.67	BORE/JACK 24IN STEEL CASING PIPE-UNCON.	L.F.	100	0%	100%
③ 797-06.89	OPEN CUT 12IN STEEL CASING PIPE	L.F.	195	0%	100%
③ 797-06.90	OPEN CUT 16IN STEEL CASING PIPE	L.F.	110	0%	100%
③ 797-06.93	OPEN CUT 24IN STEEL CASING PIPE	L.F.	100	0%	100%
④ 797-07.01	48IN MANHOLE 0FT-4FT DEPTH	EACH	1	0%	100%
④ 797-07.03	48IN MANHOLE 6FT-8FT DEPTH	EACH	3	0%	100%
④ 797-07.04	48IN MANHOLE 8FT-10FT DEPTH	EACH	9	0%	100%
④ 797-07.05	48IN MANHOLE 10FT-12FT DEPTH	EACH	5	0%	100%
④ 797-07.06	48IN MANHOLE 12FT-14FT DEPTH	EACH	5	0%	100%
⑤ 797-07.56	MANHOLE DROP CONNECTION ASSEMBLY	EACH	1	0%	100%
⑥ 797-08.01	DJ FITTINGS	LB.	760	0%	100%
① 797-08.05	6" PVC PIPE FOR SERVICE LATERAL	L.F.	700	0%	100%
⑤ 797-08.09	6" CLEAN OUT ASSEMBLY	EACH	16	0%	100%
⑦ 797-10.02	CONNECT 8IN SEWER TO EXIST. MANHOLE	EACH	5	0%	100%
⑦ 797-10.03	CONNECT 10-18IN SEWER TO EXIST. MANHOLE	EACH	3	0%	100%
⑦ 797-10.19	CONNECT TO 10IN FORCE MAIN	EACH	2	0%	100%
⑧ 797-11.15	48" MH ADJUSTMENT INCREASE HEIGHT	V.L.F.	1	0%	100%
⑨ 797-11.25	RETIRE IN PLACE 48" MANHOLE	EACH	14	0%	100%

GENERAL NOTES:

1. CONSTRUCTION OF THE SANITARY SEWER SHALL CONFORM TO THE UTILITY SPECIFICATIONS AND INFORMATION CONTAINED HEREIN.

2. ALL WORK SHALL BE PERFORMED BY A TENNESSEE LICENSED UTILITY CONTRACTOR.

3. UNDERGROUND UTILITIES INCLUDE, BUT ARE NOT LIMITED TO, WATER, SEWER, GAS, STEAM PIPING/DUCT WORK, ELECTRIC, COMMUNICATION SERVICES, STREET LIGHTING AND TRAFFIC DETECTOR LOOPS. THE CONTRACTOR SHALL LOCATE AND PROTECT ALL SUCH FACILITIES. THE CONTRACTOR IS RESPONSIBLE FOR REPAIRING ALL SUCH FACILITIES THAT ARE DAMAGED DURING CONSTRUCTION. PAYMENT FOR LOCATING, PROTECTING, COORDINATING AND RE-PAIRING EXISTING FACILITIES WILL BE INCLUDED IN OTHER ITEMS OF WORK AND NO ADDITIONAL COMPENSATION WILL BE MADE. ALL REPAIRS SHALL BE DONE IN ACCORDANCE WITH STANDARDS AND REQUIREMENTS OF THE UTILITY'S OWNER. UTILITY SUPPORT METHODS WILL BE SUBMITTED PRIOR TO CONSTRUCTION FOR APPROVAL.

4. THE CONTRACTOR SHALL PROVIDE AND MAINTAIN SUITABLE SIGNAGE, BARRICADES, AND LIGHTS FOR PROTECTION OF TRAFFIC. ANY EXISTING ROAD SIGN REMOVED FOR CONSTRUCTION SHALL BE REPLACED BY THE END OF THE WORKING DAY. TEMPORARY STOP SIGNS SHALL BE ERECTED PRIOR TO REMOVAL OF PERMANENT STOP SIGNS.

5. THE CONTRACTOR SHALL NOT CLOSE OR BLOCK ANY HIGHWAY, STREET, OR ROADWAY WITHOUT FIRST OBTAINING ALL REQUIRED PERMITS FROM THE GOVERNING ENTITY (TDOT, CITY, COUNTY, ETC...).

6. THE CONTRACTOR SHALL PROVIDE ACCESS TO UTILITY COMPANIES FOR MAINTENANCE AND WORK ON THEIR UTILITIES DURING THE COURSE OF WORK.

7. SURVEY MONUMENTS DISTURBED BY THE CONTRACTOR SHALL BE RESET AS DIRECTED BY THE RESIDENT PROJECT REPRESENTATIVE. PRIOR TO DISTURBANCE, CONTACT THE STATE RESIDENT PROJECT REPRESENTATIVE FOR MONUMENT INFORMATION.

8. CONTRACTOR SHALL VERIFY WORK IN FIELD AND SHALL SATISFY HIMSELF AS TO THE ACCURACY BETWEEN WORK SET FORTH ON THESE PLANS AND THE WORK REQUIRED IN THE FIELD. ANY DISCREPANCIES SHALL BE BROUGHT TO THE ATTENTION OF THE RESIDENT PROJECT REPRESENTATIVE PRIOR TO THE START OF CONSTRUCTION.

9. THE EXISTING UTILITIES SHOWN AND INDICATED ON THE DRAWINGS ARE FOR GENERAL INFORMATION ONLY. THE CONTRACTOR SHALL BE RESPONSIBLE FOR VERIFICATION OF EXISTING UNDERGROUND UTILITIES, ALL COSTS ASSOCIATED WITH POTHOLING WILL BE INCLUDED IN OTHER ITEMS OF WORK AND NO ADDITIONAL COMPENSATION WILL BE MADE THEREFORE. THE CONTRACTOR SHALL BE RESPONSIBLE FOR ANY DAMAGE OR DISRUPTION OF UTILITY SERVICE DURING CONSTRUCTION. THE CONTRACTOR SHALL VERIFY LOCATIONS AND DEPTHS OF ALL EXISTING UTILITIES IN THE PROJECT AREA PRIOR TO BEGINNING CONSTRUCTION.

10. THE CONTRACTOR SHALL PROVIDE SUPPORT OF EXISTING UTILITIES TO MAINTAIN SERVICE AND INTEGRITY.

11. THE CONTRACTOR SHALL NEATLY SAW CUT ALL ROADWAYS AND DRIVEWAYS PRIOR TO INSTALLING A PERMANENT PAVEMENT REPAIR.

12. THE CONTRACTOR SHALL MAINTAIN ACCESS TO ALL PROPERTIES DURING CONSTRUCTION.

13. INDICATED SCALES ARE BASED ON FULL SIZE DRAWINGS; IF DRAWINGS ARE REDUCED, SCALES MUST BE ADJUSTED ACCORDINGLY.

14. CONTRACTOR SHALL NOTIFY THE RESIDENT PROJECT REPRESENTATIVE 48 HOURS PRIOR TO BEGINNING CONSTRUCTION.

15. LOCATION OF EXISTING RIGHT-OF-WAY (R.O.W.) LINES AND PROPERTY LINES ARE APPROXIMATE.

16. THE CONTRACTOR SHALL BE RESPONSIBLE FOR ANY DAMAGE TO THE PROJECT SITE RESULTING FROM THE CONTRACTOR'S CONSTRUCTION ACTIVITIES.

17. TREES THAT HAVE BEEN DAMAGED OR REMOVED, ASPHALT AND OTHER CONSTRUCTION DEBRIS SHALL BE REMOVED OFFSITE BY CONTRACTOR.

18. THE CONTRACTOR SHALL ENSURE POSITIVE DRAINAGE TO AND THROUGH EXISTING DRAINAGE FACILITIES. ANY CONSTRUCTION AROUND, THROUGH OR IN DRAINAGE PATHS SHALL NOT ALTER THE FLOW PATHS FROM EXISTING AFTER CONSTRUCTION IS COMPLETE.

19. CONTRACTOR SHALL BE SOLELY AND COMPLETELY RESPONSIBLE FOR WORKING CONDITIONS ON THE JOB SITE, INCLUDING SAFETY OF ALL PERSONS AND PROPERTY DURING PERFORMANCE OF WORK. THIS REQUIREMENT SHALL APPLY CONTINUOUSLY AND NOT BE LIMITED TO NORMAL WORKING HOURS.

20. WHEN EXCAVATION MUST OCCUR NEAR A UTILITY POLE, THE CONTRACTOR SHALL EMPLOY A LICENSED ELECTRICAL CONTRACTOR TO GUY, ANCHOR, BRACE, MECHANICALLYHOLD, ETC. THE POLE THROUGHOUT THE EXCAVATION PROCESS AND UNTIL THE AREA CAN BE PROPERLY BACKFILLED AND COMPACTED TO PREVENT THE MOVEMENT OF THE POLE. IF THE EXCAVATION AFFECTS AN ANCHOR, THE POLE WILL NEED TO BE STABILIZED IN A SIMILAR MANNER UNTIL THE ANCHOR CAN BE REINSTALLED IN THE EXACT LOCATION. CONTRACTOR SHALL NOTIFY THE UTILITY OWNER NOT LESS THAN SEVEN (7) CALENDAR DAYS PRIOR TO EXCAVATION WITHIN TWENTY (20) FEET OF ANY POLE AND SHALL PROVIDE INFORMATION TO THE UTILITY OWNER PERTAINING TO THE METHOD THAT IS TO BE USED TO STABILIZE THE POLE, AS WELL AS THE NAME OF THE ELECTRICAL CONTRACTOR RESPONSIBLE FOR THE PORTION OF THE WORK.

21. SEWER LINE CROSSINGS UNDER S.R. 29 SHALL BE ENCASED WITH STEEL CASING AND BE INSTALLED BY OPEN CUT OR BORE AND JACK METHOD PER STATE RESIDENT PROJECT REPRESENTATIVE'S DISCRETION.

22. ALL INCIDENTAL WORK, INCLUDING LABOR AND MATERIALS, NECESSARY TO COMPLETE THE PROJECT AS SHOWN IN THE CONTRACT DOCUMENTS, FOR WHICH A SEPERATE PAY ITEM IS NOT SHOWN SHALL BE PERFORMED BY THE CONTRACTOR AND NO ADDITIONAL PAYMENT SHALL BE MADE. THE COST OF THIS WORK SHALL BE MERGED INTO THE UNIT PRICES BID FOR THE BID ITEMS SHOWN.

REV. 12-23-13:
REVISED QUANTITIES TO ADD 8"
DIA. SAN SEWER LINES J, K,
AND L, 12" STEEL CASING,
ADDED SHEET U3-9.

LEGEND

PROPOSED CENTERLINE

PROPOSED SANITARY SEWER

PROPOSED STORM SEWER

EXIST. PROPERTY LINE

EXIST. SANITARY SEWER

EXIST. WATER LINE

EXIST. POWER LINE

EXIST. NATURAL GAS

EXIST. STORM SEWER

EXIST. STREAM

EXIST. WATER METER

EXIST. GAS METER

EXIST. MAILBOX

EXIST. SEWER MANHOLE (TO BE RETIRED)

FOOTNOTES:

① INCLUDES ALL MATERIALS, LABOR AND EQUIPMENT FOR COMPLETE EXCAVATION INCLUDING BUT NOT LIMITED TO BEDDING, BACKFILLING, THRUST BLOCKING, PIPE FUSION, APPUTENANCES, FLOWABLE FILL, MAINTAINING THE TRENCH, TESTING, CHECK DAMS, AND ANY OTHER LABOR OR MATERIAL REQUIRED TO COMPLETE FOR GRAVITY SEWER LINES OR FORCE MAINS AS SPECIFIED ON THE PLANS. DUCTILE IRON PIPE GRAVITY SEWER LINES SHALL BE EPOXY LINED.

② INCLUDES ALL MATERIALS, LABOR AND EQUIPMENT INCLUDING BUT NOT LIMITED TO CASING PIPE, PIPE SPACERS, CASING END SEALS, ANY OTHER APPURTENANCE TO COMPLETE THE WORK AS SPECIFIED ON THE PLANS, AND TRAFFIC CONTROL. IF CASING PIPE HAS CARRIER PIPE, THE CARRIER PIPE SHALL BE PAID AT THE OPEN CUT ITEM.

③ INCLUDES ALL MATERIALS, LABOR AND EQUIPMENT INCLUDING BUT NOT LIMITED TO CASING PIPE, PIPE SPACERS, CASING END SEALS, STONE BACKFILL, TEMPORARY PAVEMENT, AND ANY OTHER APPURTENANCE TO COMPLETE THE WORK AS SPECIFIED ON THE PLANS, AND TRAFFIC CONTROL.

④ INCLUDES ALL MATERIALS, LABOR AND EQUIPMENT NECESSARY FOR INSTALLATION OF PRECAST MANHOLE BOTH PREFORMED BASE OR OPEN BOTTOM (DOGHOUSE), INCLUDING BUT NOT LIMITED TO VENT ASSEMBLY (WHERE REQUIRED), CRUSHED STONE, PIPE TO MANHOLE CONNECTORS, EXCAVATION, BACKFILL, BUTYL RESIN GASKET, MANHOLE STEPS, ASPHALTIC WATERPROOFING, FRAME AND COVER, AND TRAFFIC CONTROL.

⑤ INCLUDES ALL MATERIALS, LABOR AND EQUIPMENT, INCLUDING BUT NOT LIMITED TO MACHINERY, TOOLS, OR APPARATUS NECESSARY FOR INSTALLATION OF ASSEMBLIES AS DESCRIBED AND DETAILED IN THE PLANS AND SPECS.

⑥ INCLUDES FITTINGS, GLANDS AND RESTRAINT DEVICES DESCRIBED IN POUNDS.

⑦ INCLUDES ALL MATERIALS, LABOR, AND EQUIPMENT NECESSARY FOR CONNECTING TO AN EXISTING FORCE MAIN, SEWER LINE, PUMP STATION, OR MANHOLE AS SPECIFIED ON PLANS, INCLUDING TRAFFIC CONTROL.

⑧ INCLUDES ALL MATERIALS, LABOR, AND EQUIPMENT FOR INCREASING OR DECREASING HEIGHT OF MANHOLE TO FINISHED ROAD GRADE, INCLUDING BUT NOT LIMITED TO ADDITION OR REMOVAL OF BARREL SECTIONS OR FRAME RINGS AND ADJUSTMENTS TO FRAME AND COVER.

⑨ INCLUDES ALL LABOR, EQUIPMENT, DISPOSAL OF WASTE MATERIAL, DRILLING HOLES IN BASE FOR PROPER DRAINAGE, REMOVAL OF NECESSARY BARREL SECTIONS FOR PROPER GRADE AND STONE BACKFILL.

UTILITY INFORMATION

UTILITY TITLE

ADDRESS

CONTACT PERSON

PHONE

HARRIMAN UTILITY BOARD

P.O. BOX 434

HARRIMAN, TN. 37748

FRANKIE DAVIS

(865) 882-3242

2/18/2013 10:42:5 PM
Z:\00923-000\Utilities\Drawings\January 2013 Roadway Revisions\RoSR2904_SEWER-Cover.sht

Survey & Design Division

106899

STATE OF TENNESSEE

REGISTERED ENGINEER

AGRICULTURE

CONTRACT 12-23-13

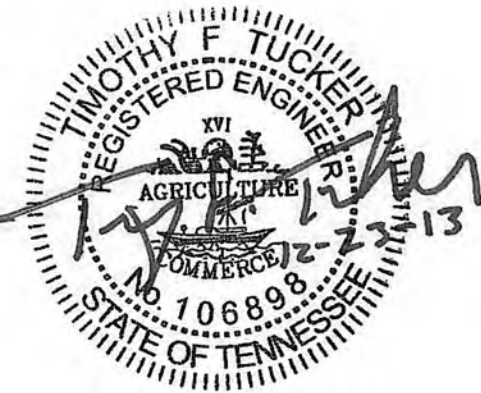
HARRIMAN
UTILITY
BOARD

SANITARY
SEWER LINE
RELOCATION

ESTIMATED QUANTITIES

TYPE	YEAR	PROJECT NO.	SHEET NO.
CONST.	2014	STP-29(58)	U3-9
		73035-3209-14	

ROANE CO.

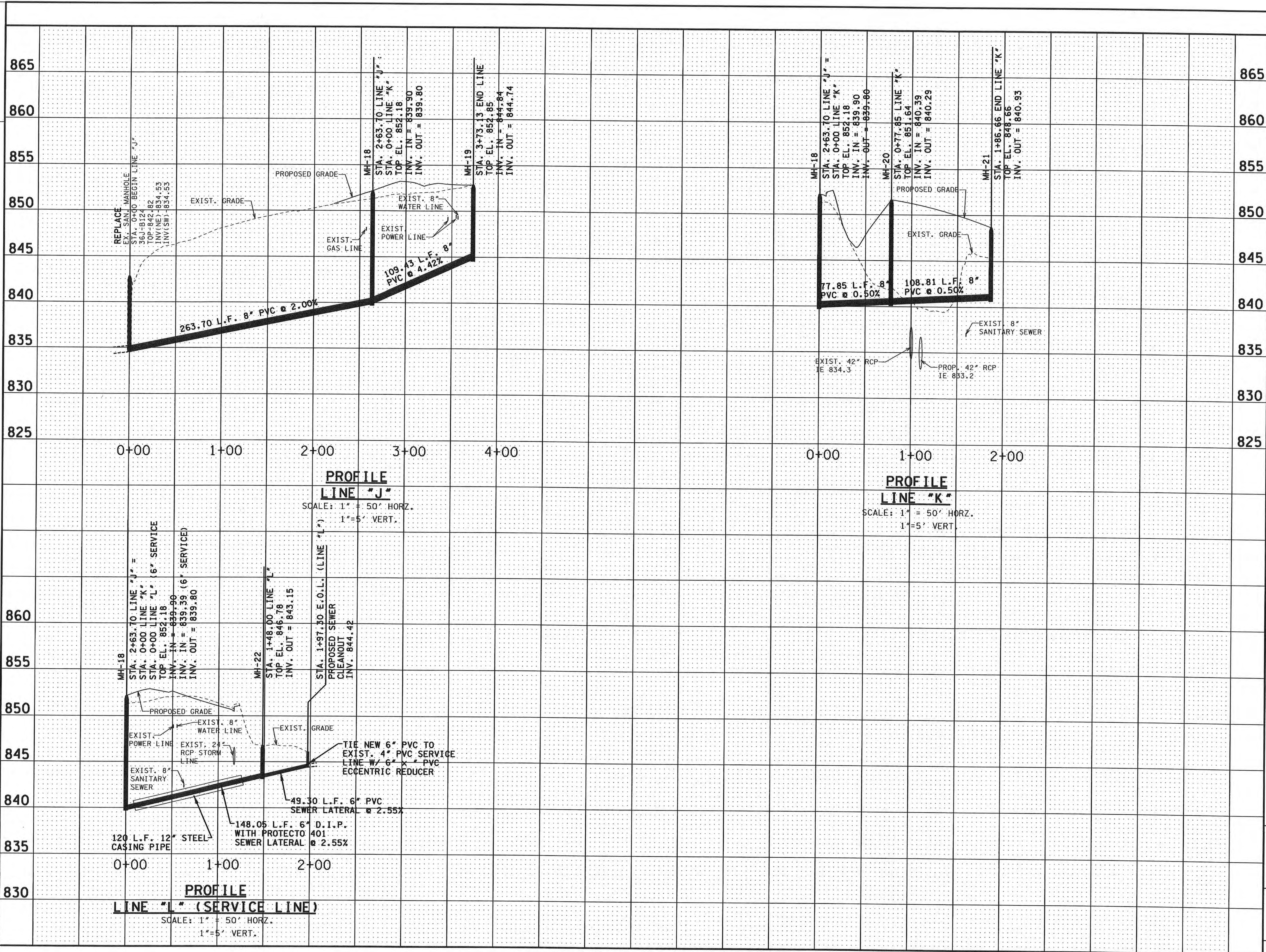


HARRIMAN
UTILITY
BOARD

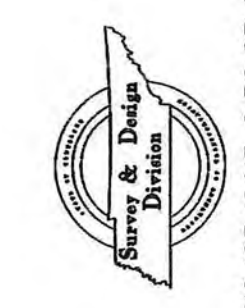
SANITARY
SEWER LINE
RELOCATION

PROFILES
SCALE: AS SHOWN

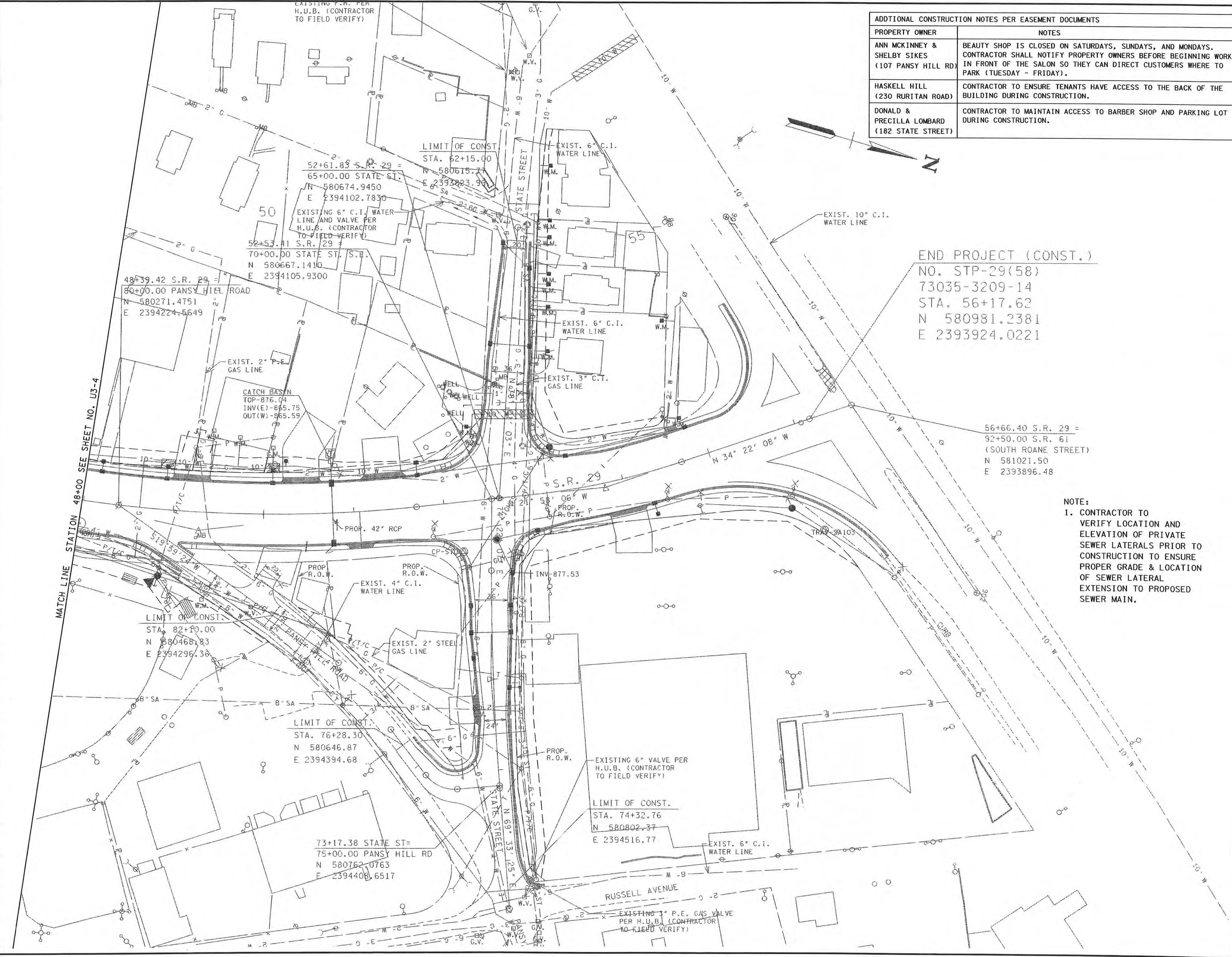
2/18/2013 12:54:44 PM
Z:\00923-000\Utilities\Drawings\January 2013 Roadway Revisions\Roan2904-SEWER_PROFILE.3.shx



<div> <div>TENNESSEE D.O.T.</div> <div>DESIGN DIVISION</div> <div>FILE NO.</div> </div>



12/23/2013 2:56:27 PM
Z:\00923-000\Utilities\Drawings\January 2013 Roadway Revisions\RoSR2907-SEWER.sht



ADDITIONAL CONSTRUCTION NOTES PER EASEMENT DOCUMENTS	
PROPERTY OWNER	NOTES
ANN MCKINNEY & SHELBY SIKES (107 PANSY HILL RD)	BEAUTY SHOP IS CLOSED ON SATURDAYS, SUNDAYS, AND MONDAYS. CONTRACTOR SHALL NOTIFY PROPERTY OWNERS BEFORE BEGINNING WORK IN FRONT OF THE SALON SO THEY CAN DIRECT CUSTOMERS WHERE TO PARK (TUESDAY - FRIDAY).
HASKELL HILL (230 RURITAN ROAD)	CONTRACTOR TO ENSURE TENANTS HAVE ACCESS TO THE BACK OF THE BUILDING DURING CONSTRUCTION.
DONALD & PRECILLA LOMBARD (182 STATE STREET)	CONTRACTOR TO MAINTAIN ACCESS TO BARBER SHOP AND PARKING LOT DURING CONSTRUCTION.

END PROJECT (CONST.)
NO. STP-29(58)
73035-3209-14
STA. 56+17.62
N 580981.2381
E 2393924.0221

NOTE:
1. CONTRACTOR TO VERIFY LOCATION AND ELEVATION OF PRIVATE SEWER LATERALS PRIOR TO CONSTRUCTION TO ENSURE PROPER GRADE & LOCATION OF SEWER LATERAL EXTENSION TO PROPOSED SEWER MAIN.

TYPE	YEAR	PROJECT NO.	SHEET NO.
CONST.	2014	STP-29(58)	U3-5
		73035-3209-14	

ROANE CO.

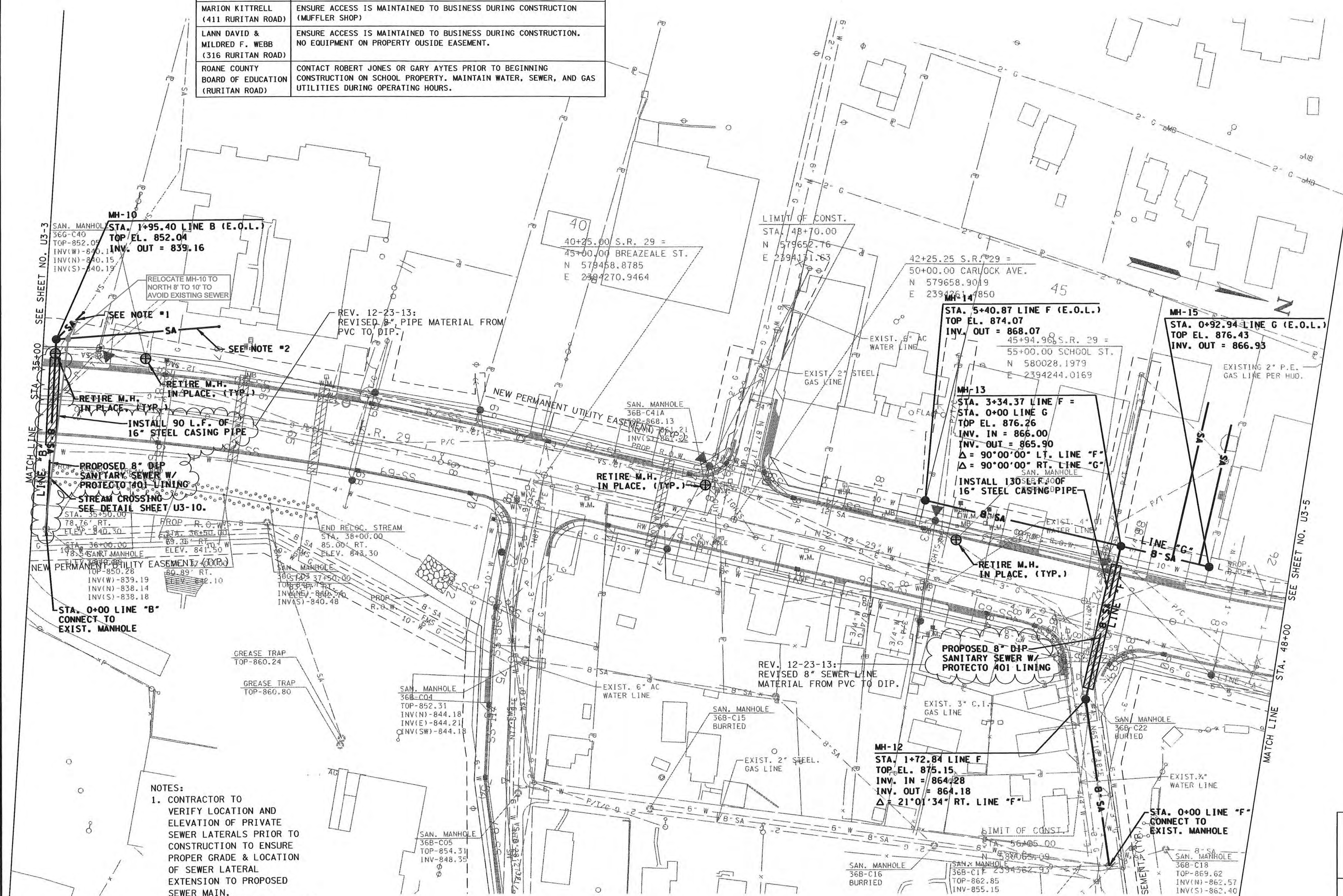


HARRIMAN UTILITY BOARD
SANITARY SEWER LINE RELOCATION
STA. 48+00.00 TO END OF PROJ. SCALE: 1"=50'

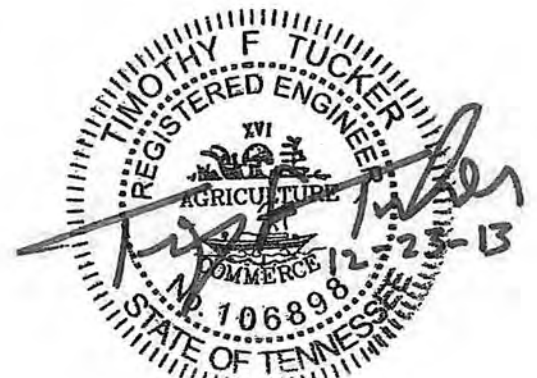
ADDITIONAL CONSTRUCTION NOTES PER EASEMENT DOCUMENTS	
PROPERTY OWNER	NOTES
MARION KITTRELL (411 RURITAN ROAD)	ENSURE ACCESS IS MAINTAINED TO BUSINESS DURING CONSTRUCTION (MUFFLER SHOP)
LANN DAVID & MILDRED F. WEBB (316 RURITAN ROAD)	ENSURE ACCESS IS MAINTAINED TO BUSINESS DURING CONSTRUCTION. NO EQUIPMENT ON PROPERTY OUTSIDE EASEMENT.
ROANE COUNTY BOARD OF EDUCATION (RURITAN ROAD)	CONTACT ROBERT JONES OR GARY AYLES PRIOR TO BEGINNING CONSTRUCTION ON SCHOOL PROPERTY. MAINTAIN WATER, SEWER, AND GAS UTILITIES DURING OPERATING HOURS.

TYPE	YEAR	PROJECT NO.	SHEET NO.
CONST.	2014	STP-29(58)	U3-4
		73035-3209-14	

ROANE CO.
REV. 12-23-13:
REVISED 8" PIPE MATERIAL FROM
PVC TO DIP.



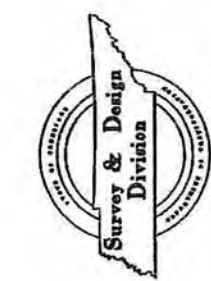
- NOTES:
- CONTRACTOR TO VERIFY LOCATION AND ELEVATION OF PRIVATE SEWER LATERALS PRIOR TO CONSTRUCTION TO ENSURE PROPER GRADE & LOCATION OF SEWER LATERAL EXTENSION TO PROPOSED SEWER MAIN.
 - CONTRACTOR TO LOCATE EXIST LATERAL IN FRONT OF CHURCH AND CONNECT TO NEW MANHOLE. INSTALL CLEANOUTS AT BENDS.



HARRIMAN
UTILITY
BOARD

SANITARY
SEWER LINE
RELOCATION

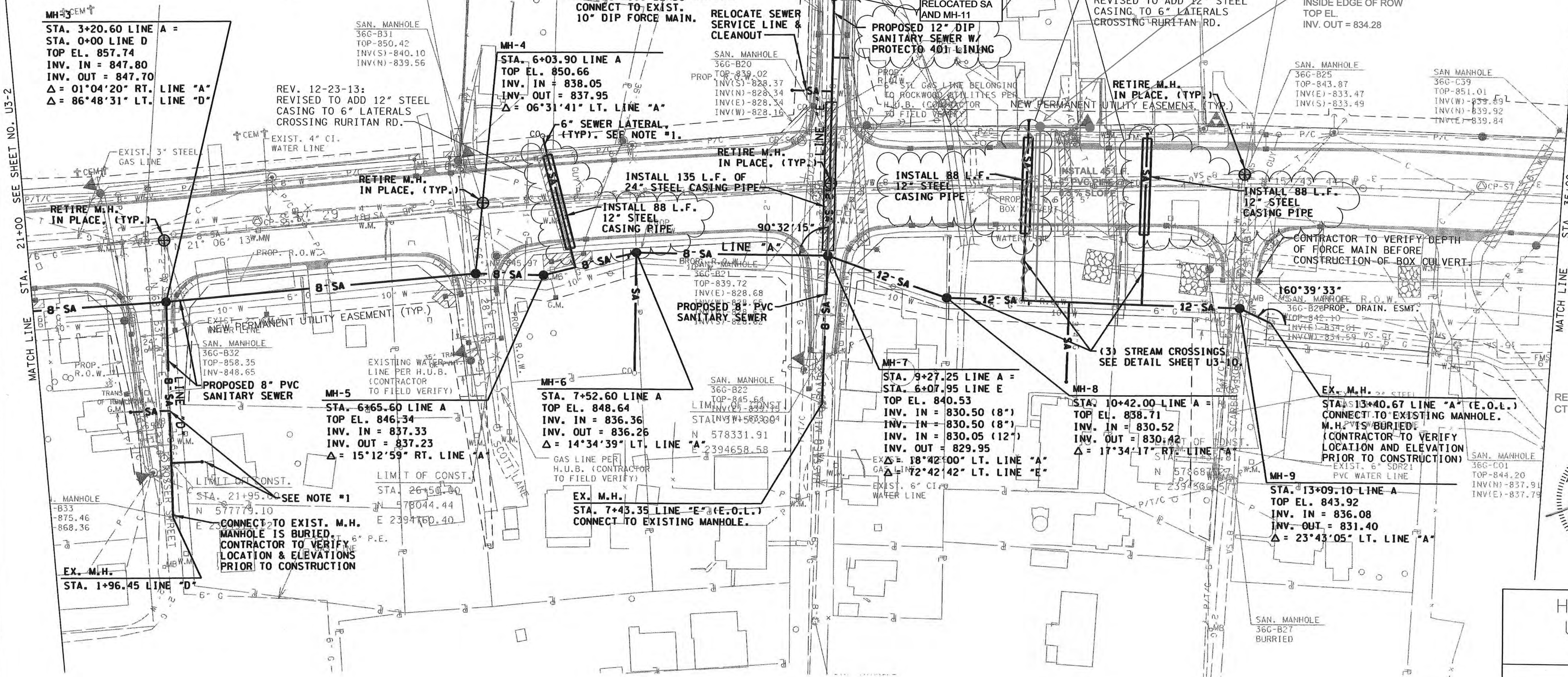
STA. 35+00.00 TO STA. 48+00.00
SCALE: 1"=50'



- NOTE:
- CONTRACTOR TO VERIFY LOCATION AND ELEVATION OF PRIVATE SEWER LATERALS PRIOR TO CONSTRUCTION TO ENSURE PROPER GRADE & LOCATION OF SEWER LATERAL EXTENSION TO PROPOSED SEWER MAIN. SEWER LATERALS THAT CROSS RURITAN ROAD SHALL BE DUCTILE IRON WITH PROTECTO 401 LINING.
 - CONTRACTOR TO VERIFY FORCE MAIN DEPTH BY POTHOLING PRIOR TO RELOCATION. IF CROWN OF FORCE MAIN IS BELOW 825.5', NO WORK SHALL BE DONE ON FORCE MAIN.
 - PRIOR TO ADDING MH 8A AND 8B, REMOVE CLEANOUT AND BENDS AND INSTALL NEW 6" DI PIPING AT MATCHING GRADE (TO 6" DI PIPING IN CASING) INTO INVERT OUT OF MH 8A. ADJUST MH TO MATCH GRADE OF PIPING.
 - REMOVE ADDITIONAL 6" PVC PIPING AND CLEANOUTS TO BOTH PROPERTIES. INSTALL DI WYE AT EACH PROPERTY CONNECTION.
 - FOLLOWING INSTALLATION, EXTEND MH 8A TOP TO MATCH UPPER SLOPE GRADE AND ALIGN TOP OF MH 8B WITH FUTURE DRIVEWAY.

ADDITIONAL CONSTRUCTION NOTES PER EASEMENT DOCUMENTS	
PROPERTY OWNER	NOTES
REBECCA A. BROWN (839 RURITAN ROAD)	CONTACT BECKY BROWN 2 WEEKS PRIOR TO WORKING ON PROPERTY. TRY TO WORK ON PROPERTY DURING TIMES THE BUSINESS IS CLOSED (JANUARY - FEBRUARY OR JULY - AUGUST). BE CAREFUL NOT TO DAMAGE FRENCH DRAIN NEAR NEW PROPERTY LINE. NO EQUIPMENT IS TO BE DRIVEN ON CONCRETE PARKING AREA OUTSIDE OF EASEMENT.
NEW WILLARD PARK CEMETARY (RURITAN ROAD)	CARE MUST BE TAKEN TO ENSURE THAT NO GRAVES WILL BE DISTURBED.
GEORGE D. & HELEN W. WHALEY (814 RURITAN ROAD)	MAINTAIN ACCESS TO DRIVEWAY (RENTAL PROPERTY)

REV. 12-23-13:
REVISED TO CHANGE 6" LATERALS
CROSSING RURITAN RD. FROM
PVC TO DIP.



TYPE	YEAR	PROJECT NO.	SHEET NO.
CONST.	2014	STP-29(58)	U3-3
		73035-3209-14	

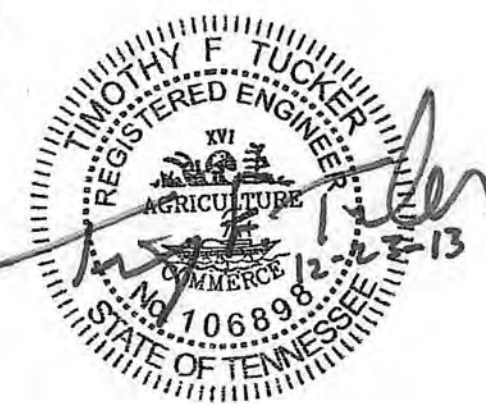
ROANE CO.

REV. 12-23-13:
REVISED TO ADD 12" STEEL CASINGS, 6" & 12" PIPE MATERIAL FROM PVC TO DIP.

REV. 2-11-15
REVISED LOCATION OF 12" DIP SANITARY SEWER EAST OF MH-7.

REV. 3-11-16
ADDED MH 8A, MH 8B AND 6" SA BETWEEN MANHOLES. ADDED NOTES 3, 4, AND 5.

REVISIONS BY JOHN KING, PE,
CTI ENGINEERS, INC.



HARRIMAN
UTILITY
BOARD

SANITARY
SEWER LINE
RELOCATION

STA. 21+00.00 TO STA. 35+00.00
SCALE: 1"=50'