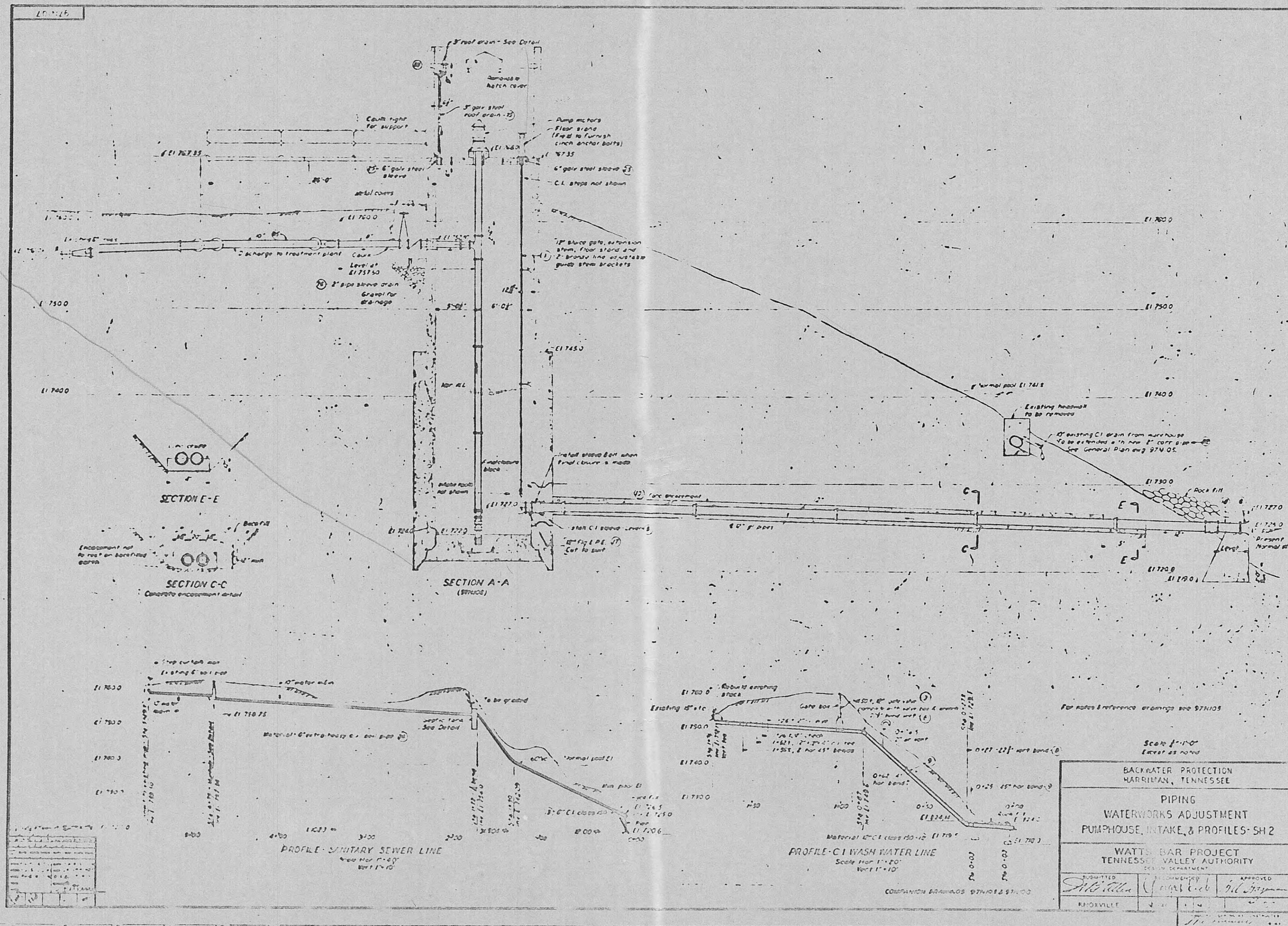


BACKWATER PROTECTION HARRMAN, TENNESSEE		
WATERWORKS ADJUSTMENTS LOW LIFT PUMPING STATION PLAN & SECTIONS		
WATTS BAR PROJECT TENNESSEE VALLEY AUTHORITY WATER CONTROL PLANNING DEPARTMENT		
DESIGNED BY R. L. Long	RECOMMENDED BY J. B. Brown	APPROVED BY J. B. Brown
DATE 3/22/60	PROJECT NO. 130-KC-29	



Scale 1"=10'
Except as noted

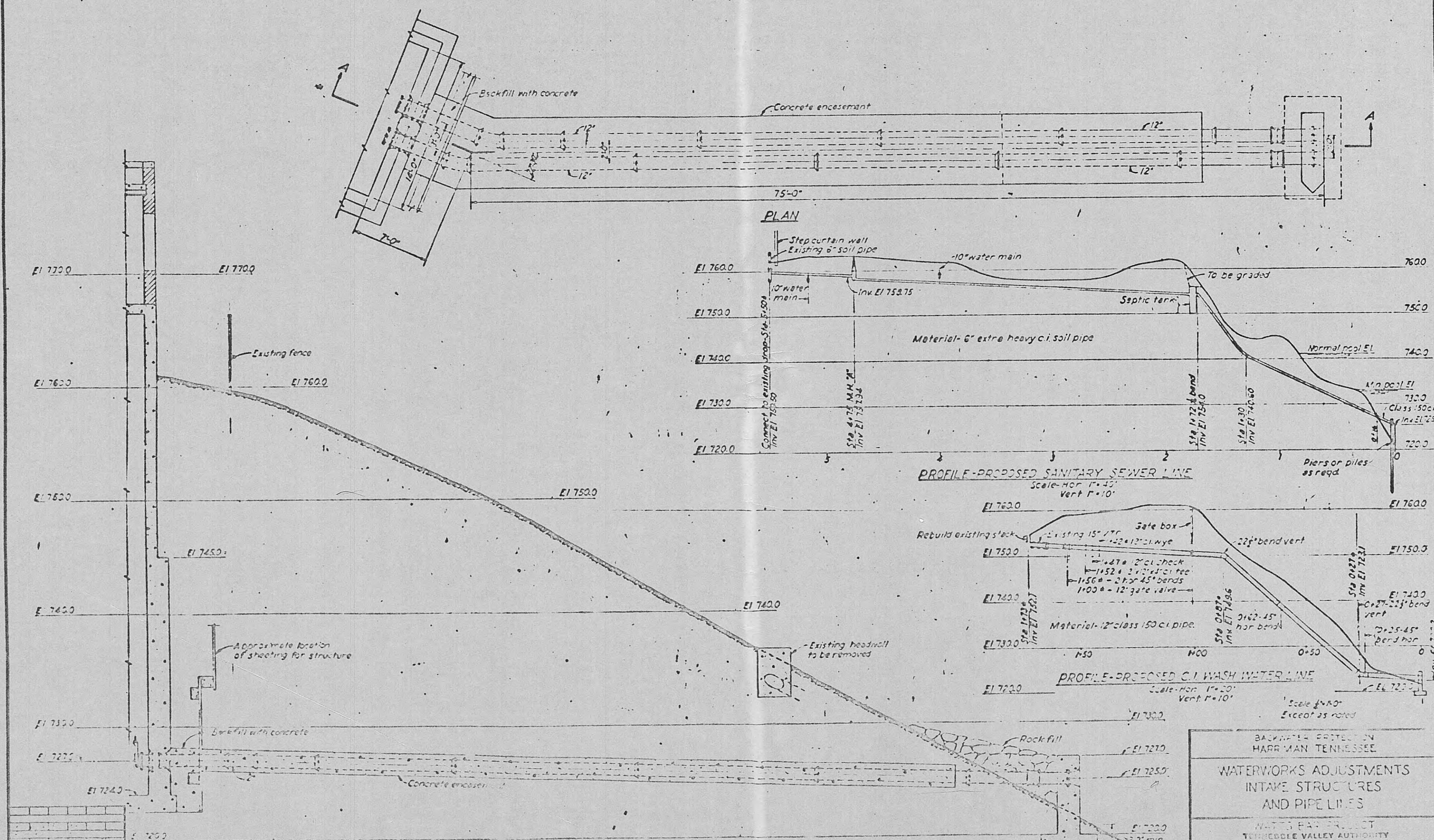
BACKWATER PROTECTION
HARRISMAN, TENNESSEE

PIPING
WATERWORKS ADJUSTMENT
PUMPHOUSE, INTAKE, & PROFILES - SH 2

WATTS BAR PROJECT
TENNESSEE VALLEY AUTHORITY
DESIGN DEPARTMENT

SUBMITTED	RECOMMENDED	APPROVED
<i>[Signature]</i>	<i>[Signature]</i>	<i>[Signature]</i>
KNOXVILLE		

COMPANION DRAWINGS: 974005 & 974006



SECTION A-A

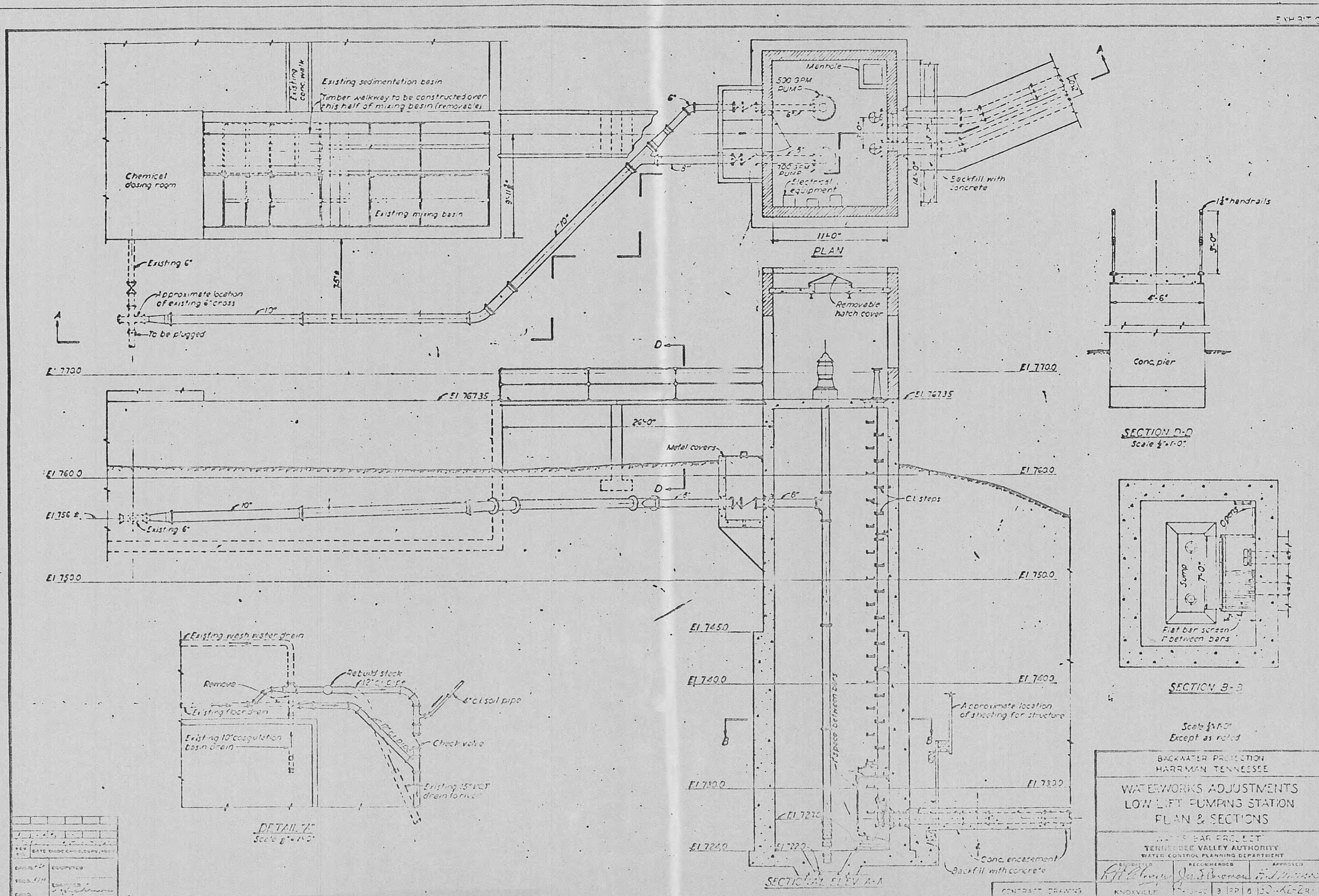
BACKWATER PROTECTION
HARRISMAN, TENNESSEE

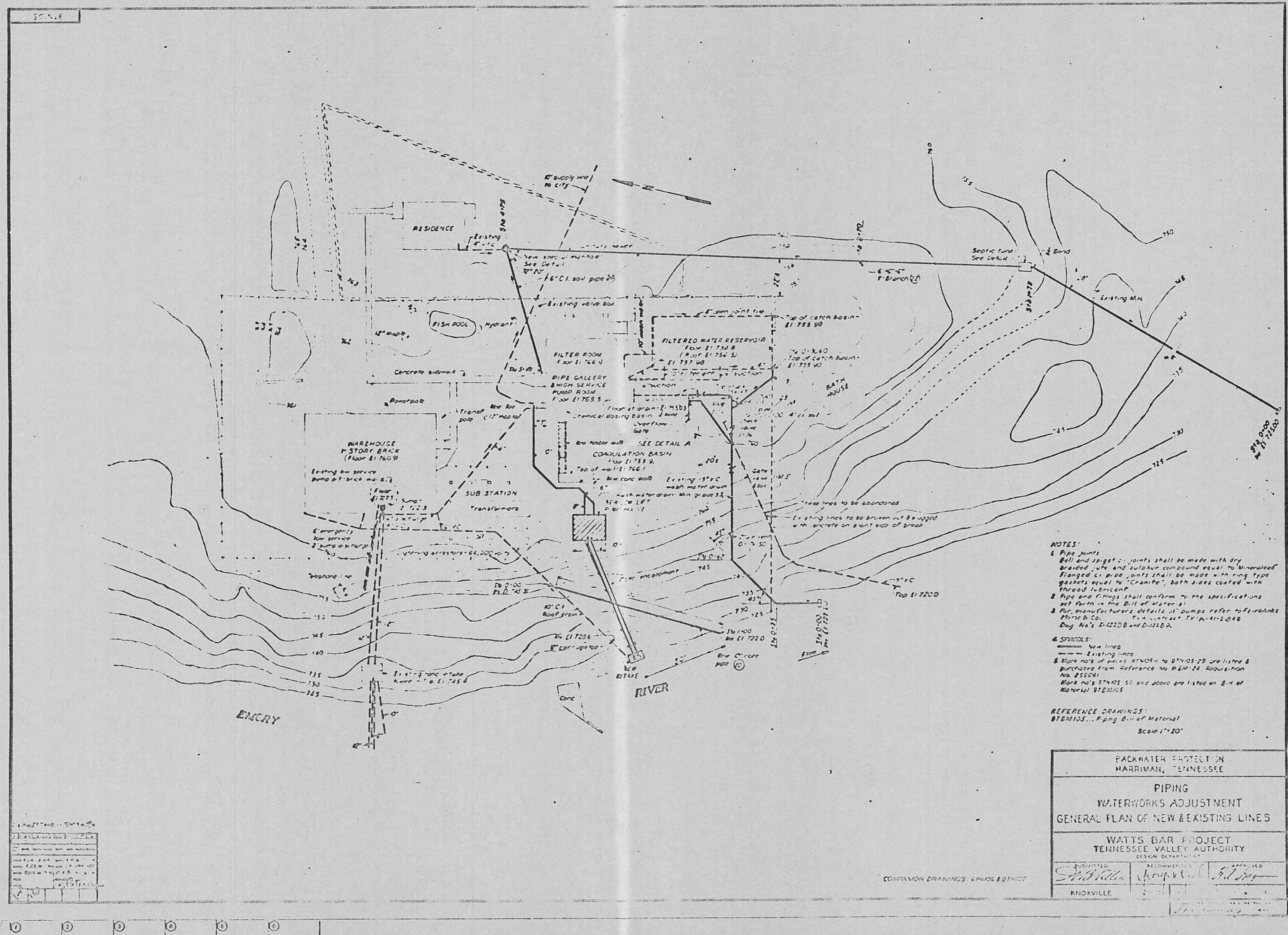
WATERWORKS ADJUSTMENTS
INTAKE STRUCTURES
AND PIPE LINES

WATTS BAR PROJECT
TENNESSEE VALLEY AUTHORITY
WATER CONTROL PLANNING DEPARTMENT

APPROVED: [Signature]
RECOMMENDED: [Signature]
CONTRACT DRAWING: [Signature]

NOVEMBER 1, 2010



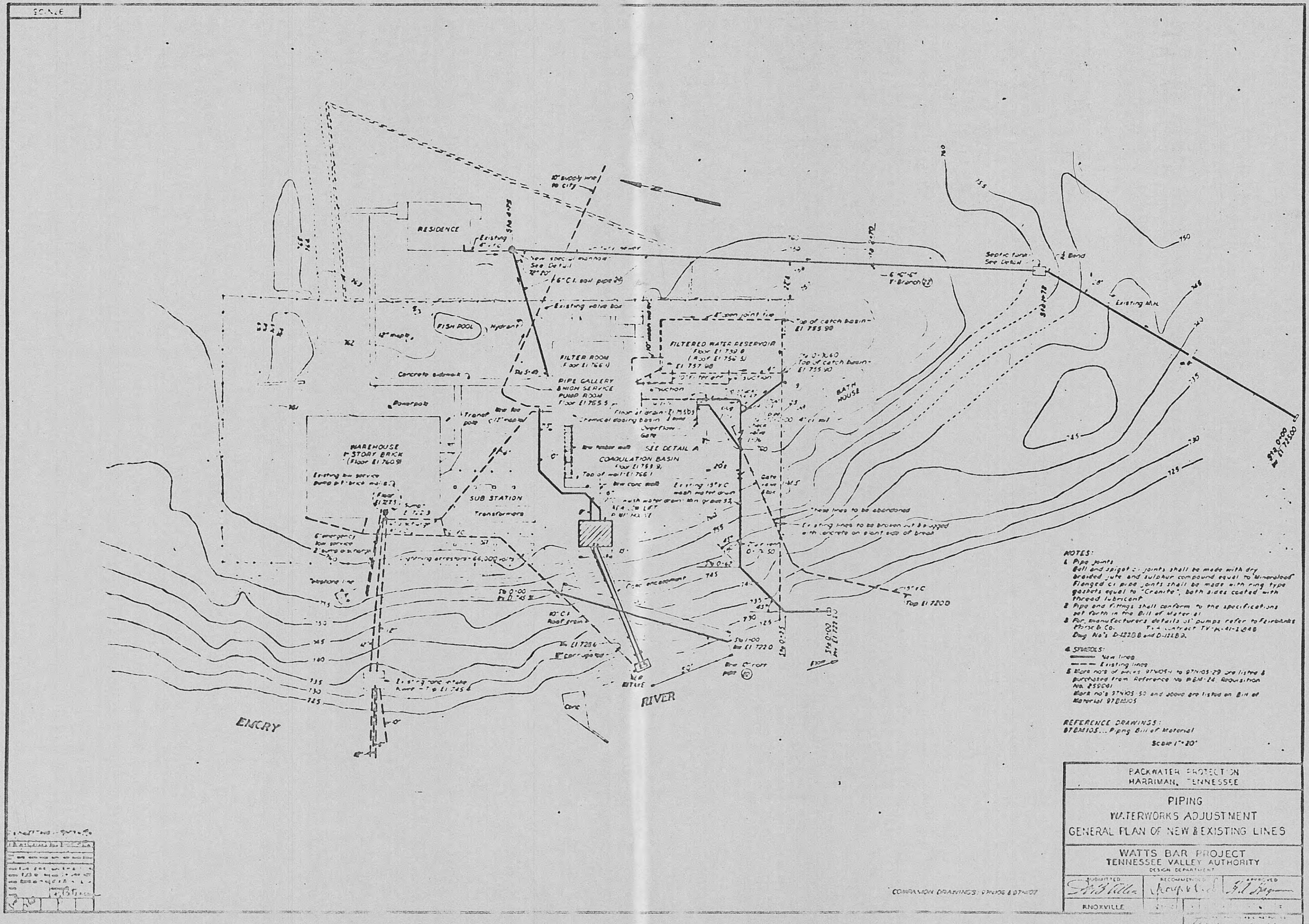


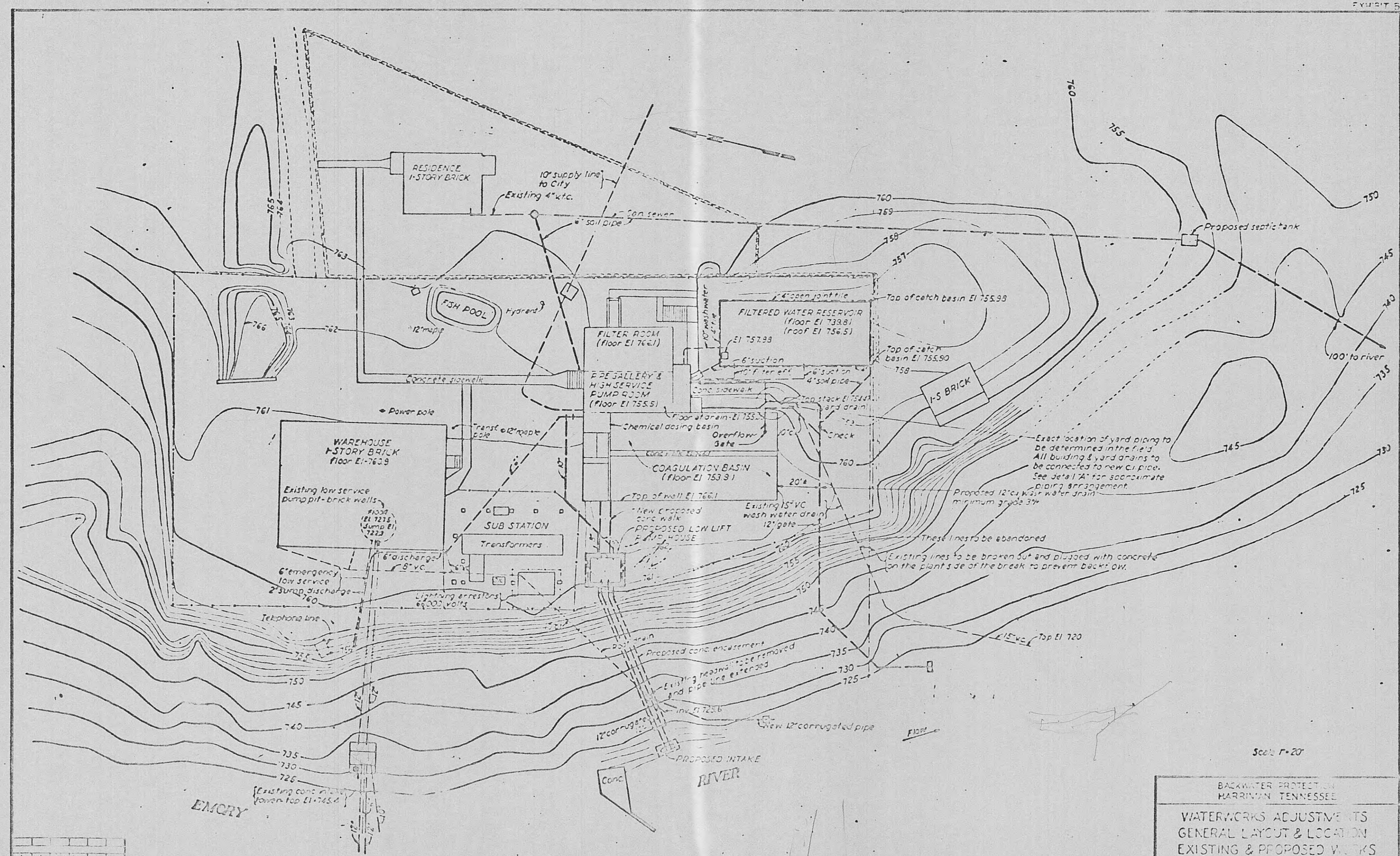
- NOTES:**
1. Pipe joints shall be made with dry braided rope and sulphur compound equal to "Unimolded". Flanged pipe joints shall be made with ring type gaskets equal to "Granite", both sides coated with thread lubricant.
 2. Pipe and fittings shall conform to the specifications set forth in the Bill of Material.
 3. For manufacturers details of pumps refer to Fairbanks Morse Co. T-11 Catalog, T-11-A-4-1-2-4-4. Dig No's D-1220B and D-1212B.
 4. SYMBOLS:
 - - - - - New lines
 ——— Existing lines
 * Mark note of points STNOS 11 to STNOS 29 are listed & purchased from Reference No. R-24 Acquisition No. 255001.
 Mark note STNOS 30 and above are listed on B.M. of Material STNOS 30.

REFERENCE DRAWINGS:
 STNOS... Piping Bill of Material
 Scale 1"=20'

PACKWATER PROJECT ON HARRIMAN, TENNESSEE	
PIPING	
WATERWORKS ADJUSTMENT	
GENERAL PLAN OF NEW & EXISTING LINES	
WATTS BAR PROJECT	
TENNESSEE VALLEY AUTHORITY	
DESIGN DEPARTMENT	
DESIGNED BY <i>Smith & Hill</i>	REVIEWED BY <i>W. H. Hill</i>
APPROVED BY <i>W. H. Hill</i>	APPROVED BY <i>W. H. Hill</i>
KNOXVILLE	KNOXVILLE

NO.	DESCRIPTION	QUANTITY	UNIT	PRICE	TOTAL
1	16" C.I. pipe 25'	1	25'		
2	16" C.I. pipe 25'	1	25'		
3	16" C.I. pipe 25'	1	25'		
4	16" C.I. pipe 25'	1	25'		
5	16" C.I. pipe 25'	1	25'		
6	16" C.I. pipe 25'	1	25'		
7	16" C.I. pipe 25'	1	25'		
8	16" C.I. pipe 25'	1	25'		
9	16" C.I. pipe 25'	1	25'		
10	16" C.I. pipe 25'	1	25'		
11	16" C.I. pipe 25'	1	25'		
12	16" C.I. pipe 25'	1	25'		
13	16" C.I. pipe 25'	1	25'		
14	16" C.I. pipe 25'	1	25'		
15	16" C.I. pipe 25'	1	25'		
16	16" C.I. pipe 25'	1	25'		
17	16" C.I. pipe 25'	1	25'		
18	16" C.I. pipe 25'	1	25'		
19	16" C.I. pipe 25'	1	25'		
20	16" C.I. pipe 25'	1	25'		
21	16" C.I. pipe 25'	1	25'		
22	16" C.I. pipe 25'	1	25'		
23	16" C.I. pipe 25'	1	25'		
24	16" C.I. pipe 25'	1	25'		
25	16" C.I. pipe 25'	1	25'		
26	16" C.I. pipe 25'	1	25'		
27	16" C.I. pipe 25'	1	25'		
28	16" C.I. pipe 25'	1	25'		
29	16" C.I. pipe 25'	1	25'		
30	16" C.I. pipe 25'	1	25'		
31	16" C.I. pipe 25'	1	25'		
32	16" C.I. pipe 25'	1	25'		
33	16" C.I. pipe 25'	1	25'		
34	16" C.I. pipe 25'	1	25'		
35	16" C.I. pipe 25'	1	25'		
36	16" C.I. pipe 25'	1	25'		
37	16" C.I. pipe 25'	1	25'		
38	16" C.I. pipe 25'	1	25'		
39	16" C.I. pipe 25'	1	25'		
40	16" C.I. pipe 25'	1	25'		
41	16" C.I. pipe 25'	1	25'		
42	16" C.I. pipe 25'	1	25'		
43	16" C.I. pipe 25'	1	25'		
44	16" C.I. pipe 25'	1	25'		
45	16" C.I. pipe 25'	1	25'		
46	16" C.I. pipe 25'	1	25'		
47	16" C.I. pipe 25'	1	25'		
48	16" C.I. pipe 25'	1	25'		
49	16" C.I. pipe 25'	1	25'		
50	16" C.I. pipe 25'	1	25'		
51	16" C.I. pipe 25'	1	25'		
52	16" C.I. pipe 25'	1	25'		
53	16" C.I. pipe 25'	1	25'		
54	16" C.I. pipe 25'	1	25'		
55	16" C.I. pipe 25'	1	25'		
56	16" C.I. pipe 25'	1	25'		
57	16" C.I. pipe 25'	1	25'		
58	16" C.I. pipe 25'	1	25'		
59	16" C.I. pipe 25'	1	25'		
60	16" C.I. pipe 25'	1	25'		
61	16" C.I. pipe 25'	1	25'		
62	16" C.I. pipe 25'	1	25'		
63	16" C.I. pipe 25'	1	25'		
64	16" C.I. pipe 25'	1	25'		
65	16" C.I. pipe 25'	1	25'		
66	16" C.I. pipe 25'	1	25'		
67	16" C.I. pipe 25'	1	25'		
68	16" C.I. pipe 25'	1	25'		
69	16" C.I. pipe 25'	1	25'		
70	16" C.I. pipe 25'	1	25'		
71	16" C.I. pipe 25'	1	25'		
72	16" C.I. pipe 25'	1	25'		
73	16" C.I. pipe 25'	1	25'		
74	16" C.I. pipe 25'	1	25'		
75	16" C.I. pipe 25'	1	25'		
76	16" C.I. pipe 25'	1	25'		
77	16" C.I. pipe 25'	1	25'		
78	16" C.I. pipe 25'	1	25'		
79	16" C.I. pipe 25'	1	25'		
80	16" C.I. pipe 25'	1	25'		
81	16" C.I. pipe 25'	1	25'		
82	16" C.I. pipe 25'	1	25'		
83	16" C.I. pipe 25'	1	25'		
84	16" C.I. pipe 25'	1	25'		
85	16" C.I. pipe 25'	1	25'		
86	16" C.I. pipe 25'	1	25'		
87	16" C.I. pipe 25'	1	25'		
88	16" C.I. pipe 25'	1	25'		
89	16" C.I. pipe 25'	1	25'		
90	16" C.I. pipe 25'	1	25'		
91	16" C.I. pipe 25'	1	25'		
92	16" C.I. pipe 25'	1	25'		
93	16" C.I. pipe 25'	1	25'		
94	16" C.I. pipe 25'	1	25'		
95	16" C.I. pipe 25'	1	25'		
96	16" C.I. pipe 25'	1	25'		
97	16" C.I. pipe 25'	1	25'		
98	16" C.I. pipe 25'	1	25'		
99	16" C.I. pipe 25'	1	25'		
100	16" C.I. pipe 25'	1	25'		



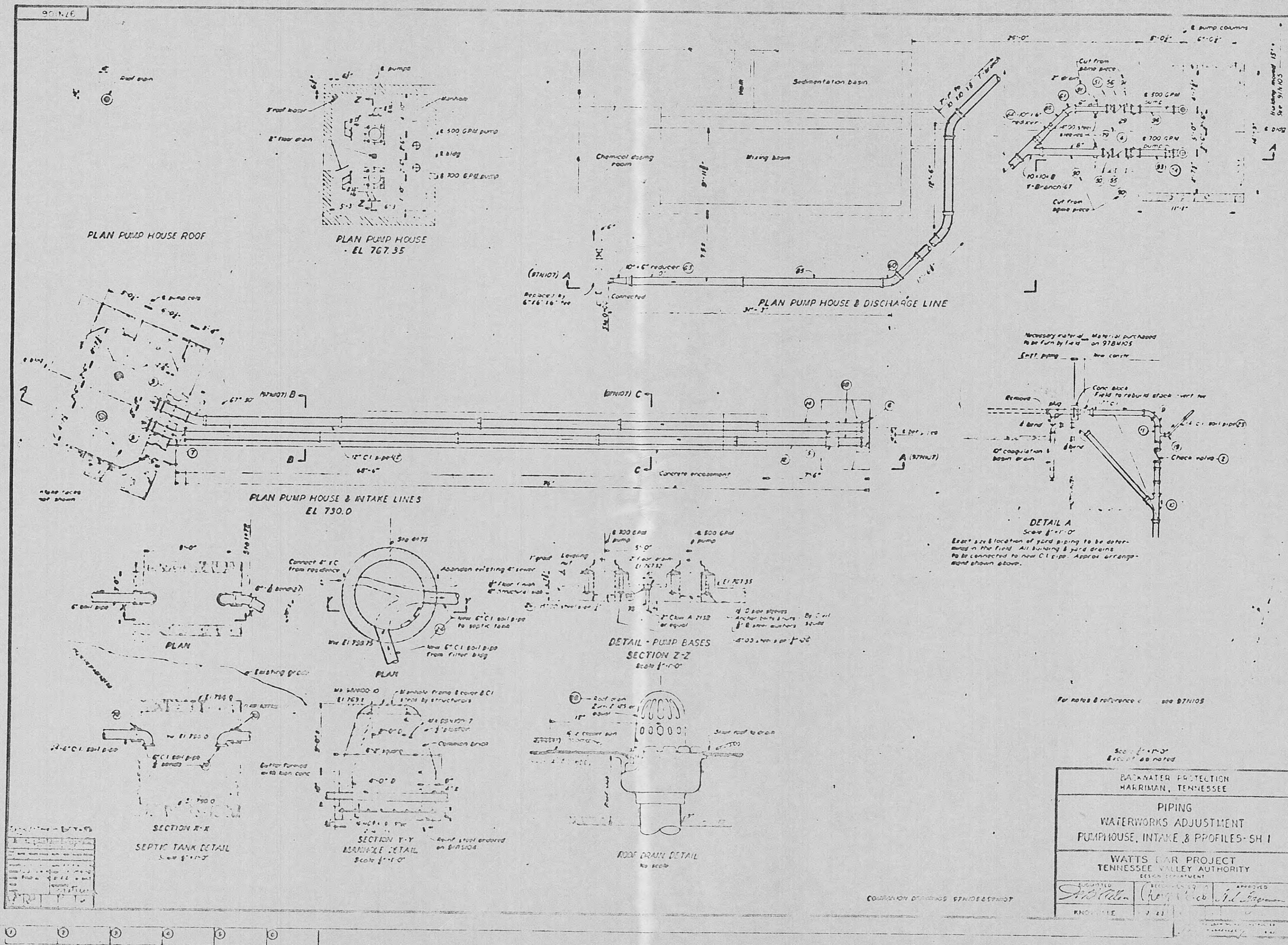


1. 1\"/>

BACKWATER PROTECTION HARRISBURG, TENNESSEE		
WATERWORKS ADJUSTMENTS GENERAL LAYOUT & LOCATION EXISTING & PROPOSED WORKS		
WATTS & ASSOCIATES TENNESSEE VALLEY AUTHORITY WATER CONTROL PLANNING DEPARTMENT		
DESIGNED R.H. HARRIS	RECORDED J.W. HARRIS	APPROVED J.W. HARRIS
KNOWLEDGE DATE: 12-1-54		

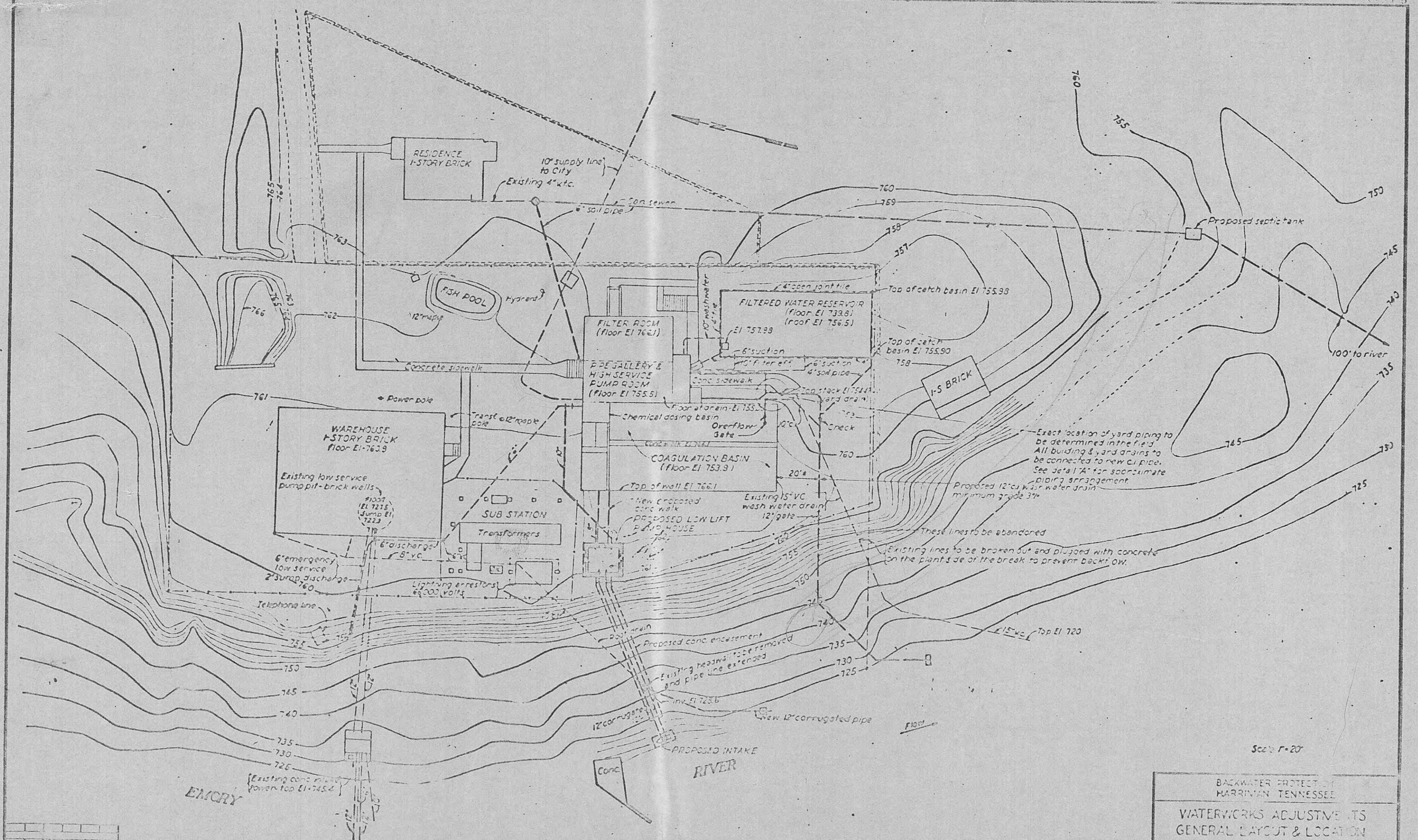
Scale 1"=20'

CONTRACT DRAWING



BACKWATER PROTECTION HARRIMAN, TENNESSEE		
PIPING WATERWORKS ADJUSTMENT PUMPHOUSE, INTAKE & PROFILES-SH 1		
WATTS BAR PROJECT TENNESSEE VALLEY AUTHORITY SECTION 1		
DESIGNED S. H. Allen	REVIEWED R. H. Allen	APPROVED J. H. Allen
KNOWLEDGE	7.21	7.21

10221
Fwdg votalw



1	2	3	4	5	6	7	8	9	10
11	12	13	14	15	16	17	18	19	20
21	22	23	24	25	26	27	28	29	30
31	32	33	34	35	36	37	38	39	40
41	42	43	44	45	46	47	48	49	50
51	52	53	54	55	56	57	58	59	60
61	62	63	64	65	66	67	68	69	70
71	72	73	74	75	76	77	78	79	80
81	82	83	84	85	86	87	88	89	90
91	92	93	94	95	96	97	98	99	100

BACKWATER PROTECT OF
HARRISMAN TENNESSEE

WATERWORKS ADJUSTMENTS
GENERAL LAYOUT & LOCATION
EXISTING & PROPOSED WORKS

WATTS ENGINEERING
TENNESSEE VALLEY AUTHORITY
WATER CONTROL PLANNING DEPARTMENT

DESIGNED BY: *R.H. McCloud*
CHECKED BY: *Jas. S. McCloud*
DATE: *Jan 5, 1934*

CONTRACT DRAWING	NO. 100	DATE	1934
BY	DATE	BY	DATE